

EXHIBIT "B"

LEGEND

SEWER EASEMENT GRANTED TO THE CITY OF SAN DIEGO PER DEED OF DEDICATION RECORDED SEPTEMBER 14, 1962 AS DOCUMENT NO. 159339 OFFICIAL RECORDS, VACATED. AREA = 0.053 ACRE (2,309 SQ. FT.)



ASSESSOR'S PARCEL NO.'S.

545-200-01

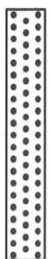
REFERENCES

MAP NO. 982, 40988-D

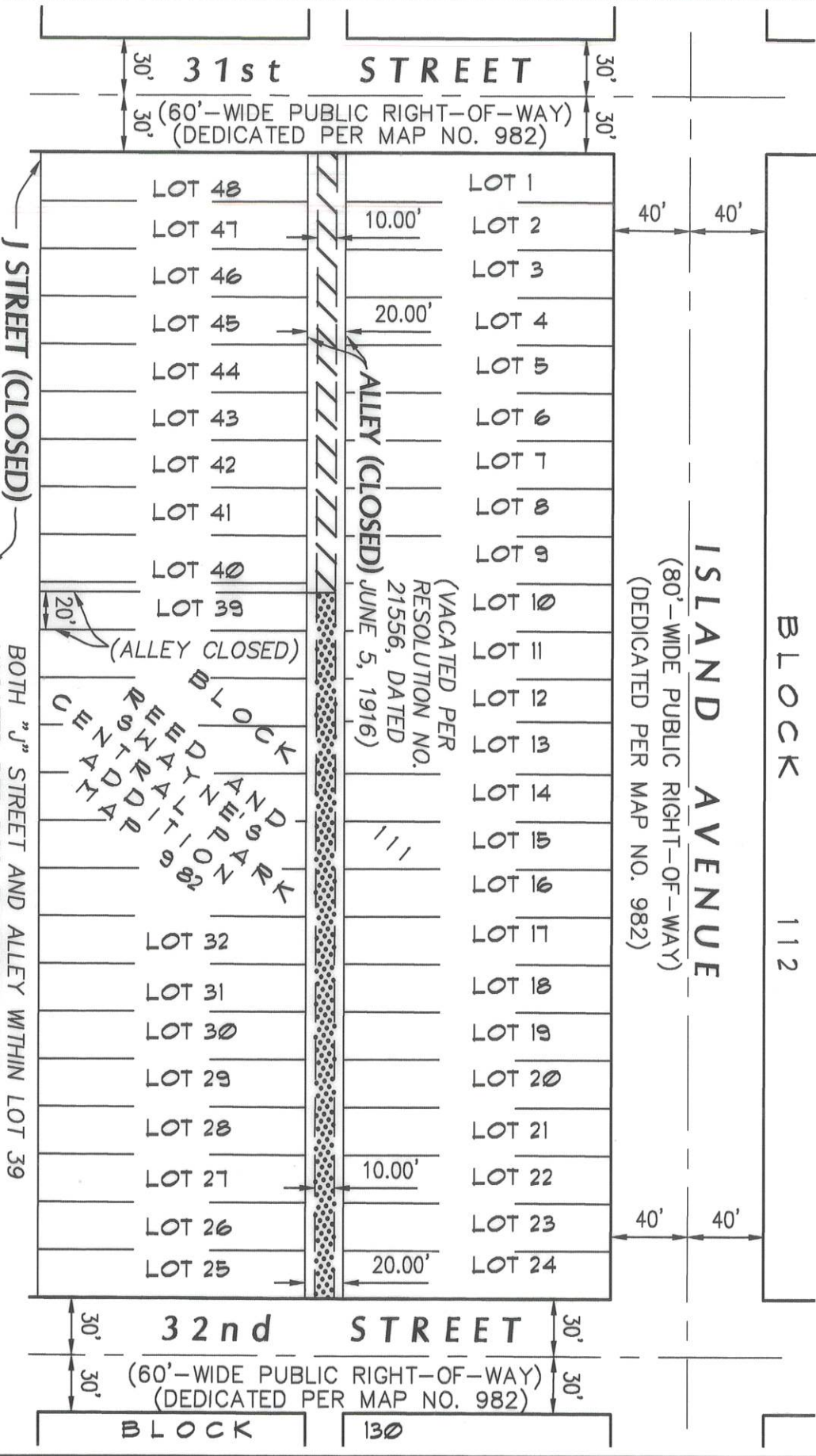
NON-PLOTTABLE EASEMENT NOTE:

AN EXISTING AVGATION EASEMENT GRANTED TO THE SAN DIEGO UNIFIED PORT DISTRICT PER DOCUMENT RECORDED OCTOBER 30, 1980 AS DOCUMENT NO. 80-0363914, AND ASSIGNED TO THE SAN DIEGO COUNTY REGIONAL AIRPORT AUTHORITY PER DOCUMENT RECORDED JANUARY 7, 2003 AS DOCUMENT NO. 2003-0016723, BOTH OF OFFICIAL RECORDS, IS NON-PLOTTABLE DUE TO ITS LACK OF A RETRACEABLE LEGAL DESCRIPTION AND IS NOT SHOWN HEREON.

PUBLIC UTILITY EASEMENT RESERVED TO THE CITY OF SAN DIEGO, PER RESOLUTION NUMBER 174737, RECORDED MARCH 11, 1963 AS DOCUMENT NO. 41768 OFFICIAL RECORDS, VACATED. AREA = 0.085 ACRE (3,701 SQ. FT.)



LOT LINE
RIGHT-OF-WAY LINE



BOTH "J" STREET AND ALLEY WITHIN LOT 39 VACATED PER DOC. RECORDED MARCH 11, 1963 AS INSTRUMENT NO. 41768, OF OFFICIAL RECORDS.



BIVE

9449 Balboa Avenue, Suite 270
San Diego, CA 92123 (619) 299-5550

ADAM E. EISENBERG LS 9096 DATE 6/19/2019

RESOLUTION CN-69116
ADOPTED JAN 13, 2020
DOCUMENT NO. 2020-0457266
RECORDED AUG 14, 2020

SEWER EASEMENT VACATION AND PUBLIC UTILITY EASEMENT VACATION WITHIN VACATED, UN-NAMED ALLEY OF BLOCK 111, REED AND SWAYNE'S CENTRAL PARK ADDITION, MAP NO. 982 BY RESOLUTION NO. 21556

DESCRIPTION	BY	APPROVED	DATE	FILED	CITY OF SAN DIEGO, CALIFORNIA	SHEET 1 OF 1 SHEETS	P.T.S. NO. 621935
ORIGINAL		AN	1/13/20				J.O.NO. N/A
					FOR CITY LAND SURVEYOR	DATE	1838-6289
							NAD-83 COORDINATES
							198-1729
							LAMBERT COORDINATES
							DWG NO. 41226-B

VACATED

STATUS