

ASSESSOR'S PARCEL NO.:

760-013-39

REFERENCE DRAWING:

- MUNICIPAL TIDELANDS SUBDIVISION TRACT NO. 1
- MISC. MAP NO.'S 18 & 564
- GRADING PLANS 39283-D
- IMPROVEMENT PLANS 41084-D
- ROS NO.'S 20589 & 11505
- SDUPD NO. 518-079

BASIS OF BEARINGS

THE BASIS OF BEARINGS FOR THIS DRAWING IS A PORTION OF THE CENTERLINE OF PACIFIC HIGHWAY PER RECORD OF SURVEY NO. 20589.

I.E., NORTH 0°32'29" EAST

LEGEND:



INDICATES PUBLIC STREET EASEMENT GRANTED TO THE CITY OF SAN DIEGO (AREA = 11,864 SQ. FT. OR 0.272 ACRE)

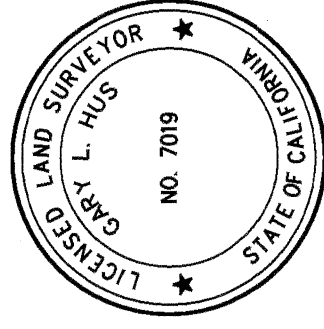
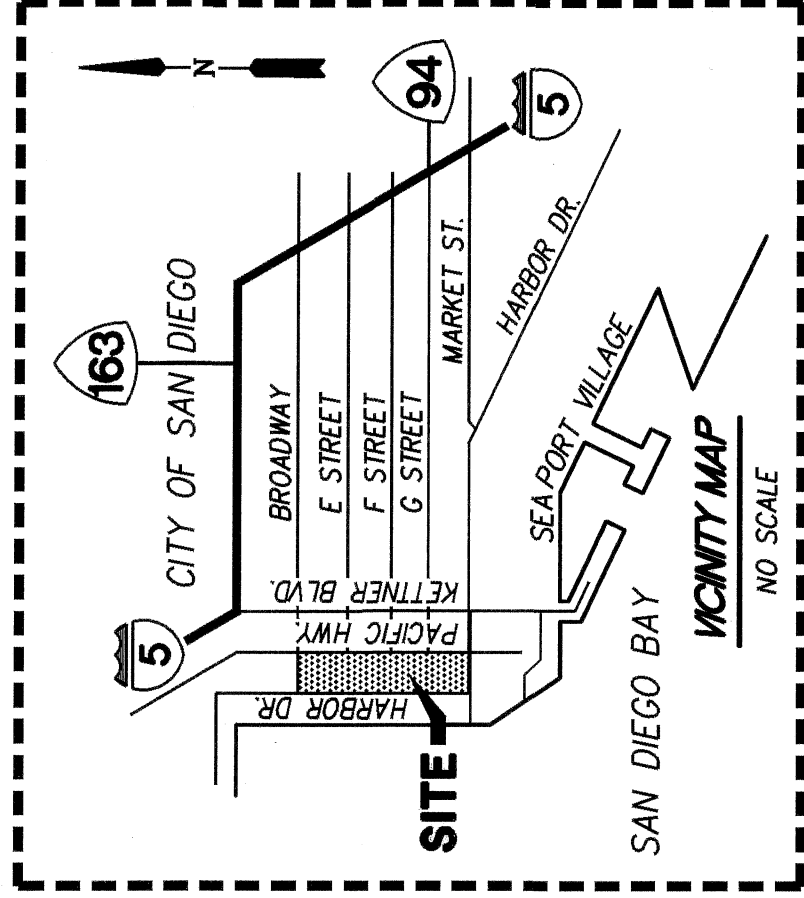
P.O.B. INDICATES POINT OF BEGINNING

O.H.W.M. INDICATES ORDINARY HIGH WATER MARK

▲ INDICATES FOUND STANDARD CITY WELL MONUMENT - NO RECORD. SHOWN ON ROS 11505 AND ROS 20589.

() INDICATES RECORD DATA PER ROS 11505

[] INDICATES WESTERLY RIGHT-OF-WAY LINE OF PACIFIC HIGHWAY AS DEDICATED TO THE CITY OF SAN DIEGO FOR ROAD AND PUBLIC STREET PURPOSES PER HARBOR COMMISSION RESOLUTION NO. 108 ADOPTED MAY 23, 1935.



Gary L. Hus 06-23-2021
GARY L. HUS, L.S. 7019 DATE

PROJECT DESIGN CONSULTANTS
701 B Street, Suite 800 San Diego, CA 92101
619.236.6471 Tel 619.234.0349 Fax

DOCUMENT NO.: 2022-0367471
RECORDED: SEPTEMBER 16, 2022

PUBLIC STREET EASEMENT
PORTION OF MUNICIPAL TIDELANDS SUBDIVISION TRACT NO. 1

DESCRIPTION	BY	APPRVD.	DATE	FILMED
ORIGINAL	PDC			

CITY OF SAN DIEGO, CALIFORNIA

SHEET 1 OF 4 SHEETS

Gary L. Hus 6/13/2021
FOR CITY ENGINEER DATE

P.T.S. NO. 629103

I.O. NO. -

1838-6275/1840-6275

CCS83 COORDINATES

198-1715/200-1715

LAMBERT COORDINATES

COMPLETED

41232-1-B

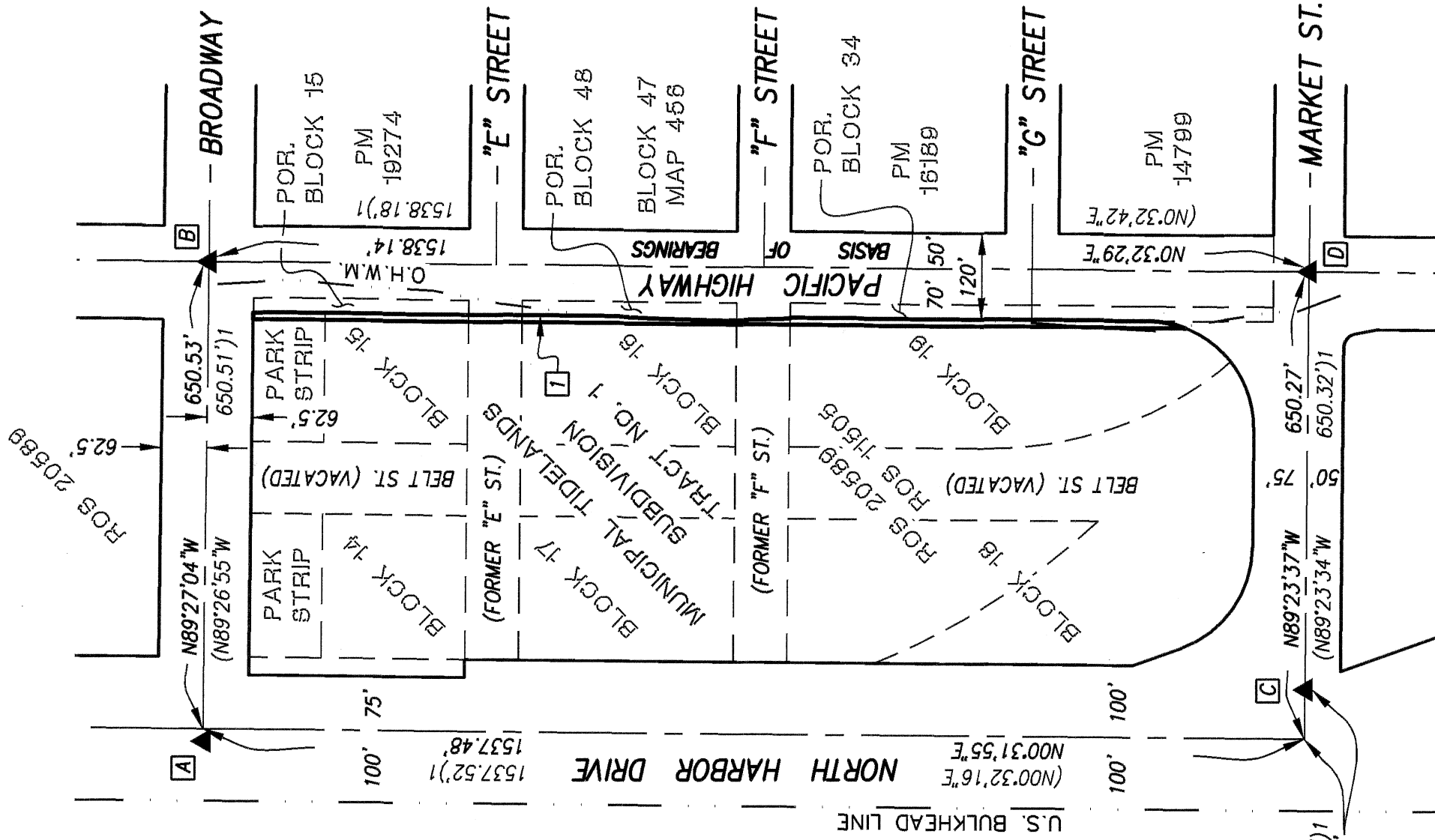
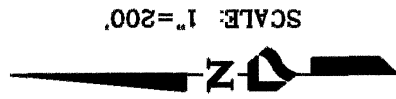
0 1 2 3 4 5 6 7 8 9 10 11 12 13

- A** FOUND PER LEGEND. ACCEPTED AS 2' OFFSET WEST OF CENTERLINE INTERSECTION OF HARBOR DRIVE AND BROADWAY PER PORT DISTRICT NOTES BOOK 324/1.
- B** FOUND PER LEGEND. ACCEPTED AS CENTERLINE INTERSECTION OF PACIFIC HIGHWAY AND BROADWAY.
- C** FOUND PER LEGEND. ACCEPTED AS POINT ON THE CENTERLINE OF MARKET ST.
- D** FOUND PER LEGEND. ACCEPTED AS CENTERLINE INTERSECTION OF PACIFIC HIGHWAY AND MARKET ST.

STREET VACATION NOTES:

THE UNDERLYING FEE INTEREST OF BELT STREET WAS ACQUIRED BY THE UNITED STATES OF AMERICA PER DEED RECORDED MARCH 6, 1942 IN BOOK 1323, PAGE 118 OF DEEDS. THIS ACQUISITION ELIMINATED ANY PRIOR PUBLIC STREET RIGHTS.

THE UNDERLYING FEE INTEREST OF FORMER "E" AND "F" STREETS WAS ACQUIRED BY THE UNITED STATES OF AMERICA PER THE DECLARATION OF TAKING DOCUMENT NO. 2015-0497868, RECORDED SEPTEMBER 21, 2015, O.R. AND AMENDED PER DOCUMENT NO. 2018-0499152, RECORDED DECEMBER 4, 2018, O.R. THIS ACQUISITION ELIMINATED ANY PRIOR PUBLIC STREET RIGHTS.



PROJECT DESIGN CONSULTANTS
 701 B Street, Suite 800 San Diego, CA 92101
 619.236.6471 Tel 619.234.0349 Fax

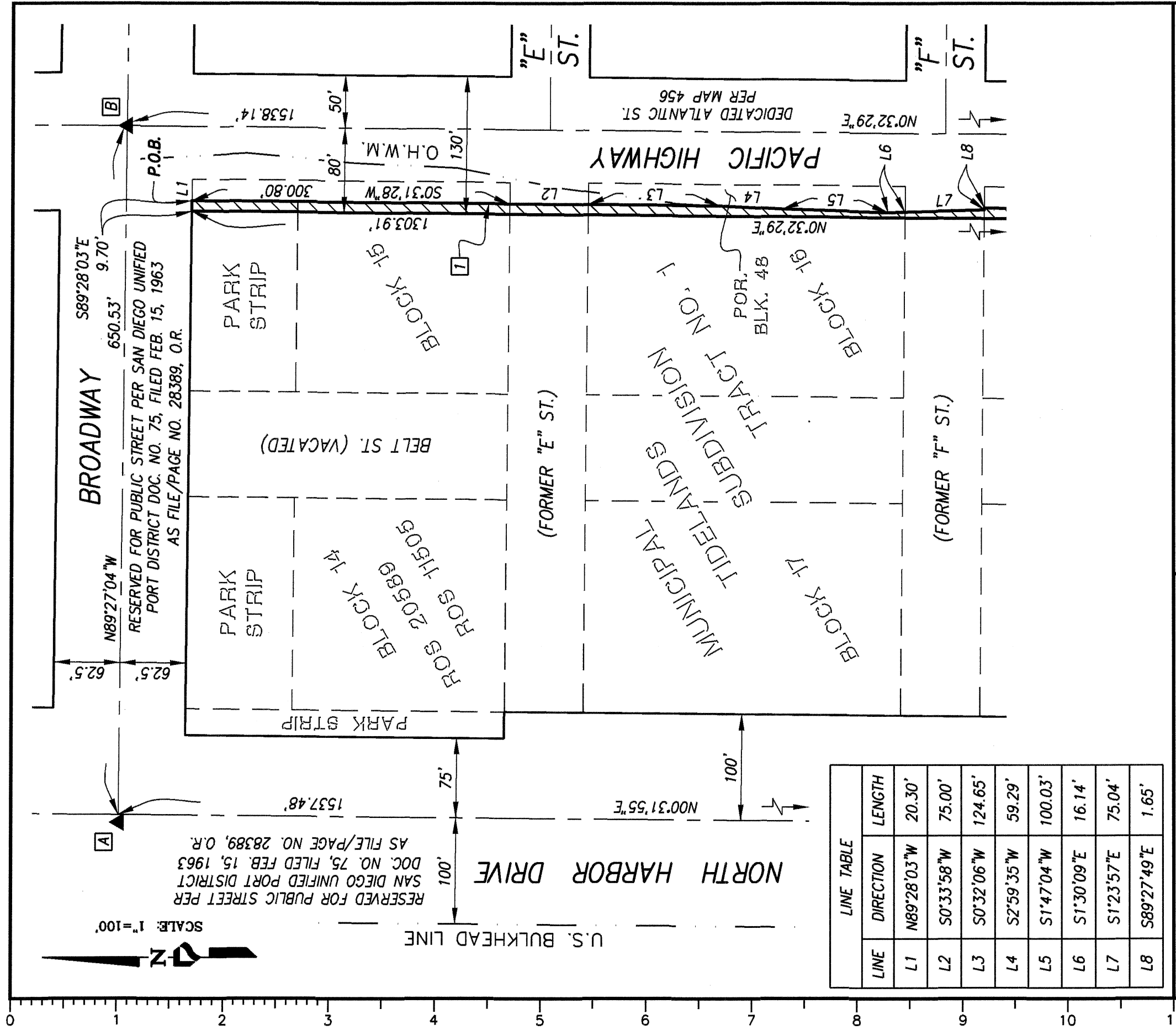
PUBLIC STREET EASEMENT
 PORTION OF MUNICIPAL TIDELANDS SUBDIVISION TRACT NO. 1

DESCRIPTION	BY	APPRVD.	DATE	FILMED
ORIGINAL	PDC			

CITY OF SAN DIEGO, CALIFORNIA
 SHEET 2 OF 4 SHEETS
Andrew R. Kopy 8/13/2021
 FOR CITY ENGINEER DATE

P.T.S. NO. 629103
 I.O. NO. -
 1838-6275/1840-6275
 CCS83 COORDINATES
 198-1715/200-1715
 LAMBERT COORDINATES
 41232-2-B

COMPLETED



PROJECT DESIGN CONSULTANTS
 701 B Street, Suite 800 San Diego, CA 92101
 619.236.6471 Tel 619.234.0349 Fax

PUBLIC STREET EASEMENT
 PORTION OF MUNICIPAL TIDELANDS SUBDIVISION TRACT NO. 1

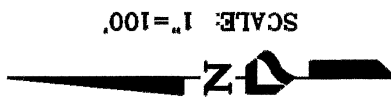
DESCRIPTION	BY	APPRVD.	DATE	FILMED
ORIGINAL	PDC			

CITY OF SAN DIEGO, CALIFORNIA
 SHEET 3 OF 4 SHEETS
 FOR CITY ENGINEER *Amelia R. Flynn* DATE *8/13/2021*

P.T.S. NO. 629103
 I.O. NO. -
 1838-6275/1840-6275
 CCS83 COORDINATES
 198-1715/200-1715
 LAMBERT COORDINATES
 41232-3-B

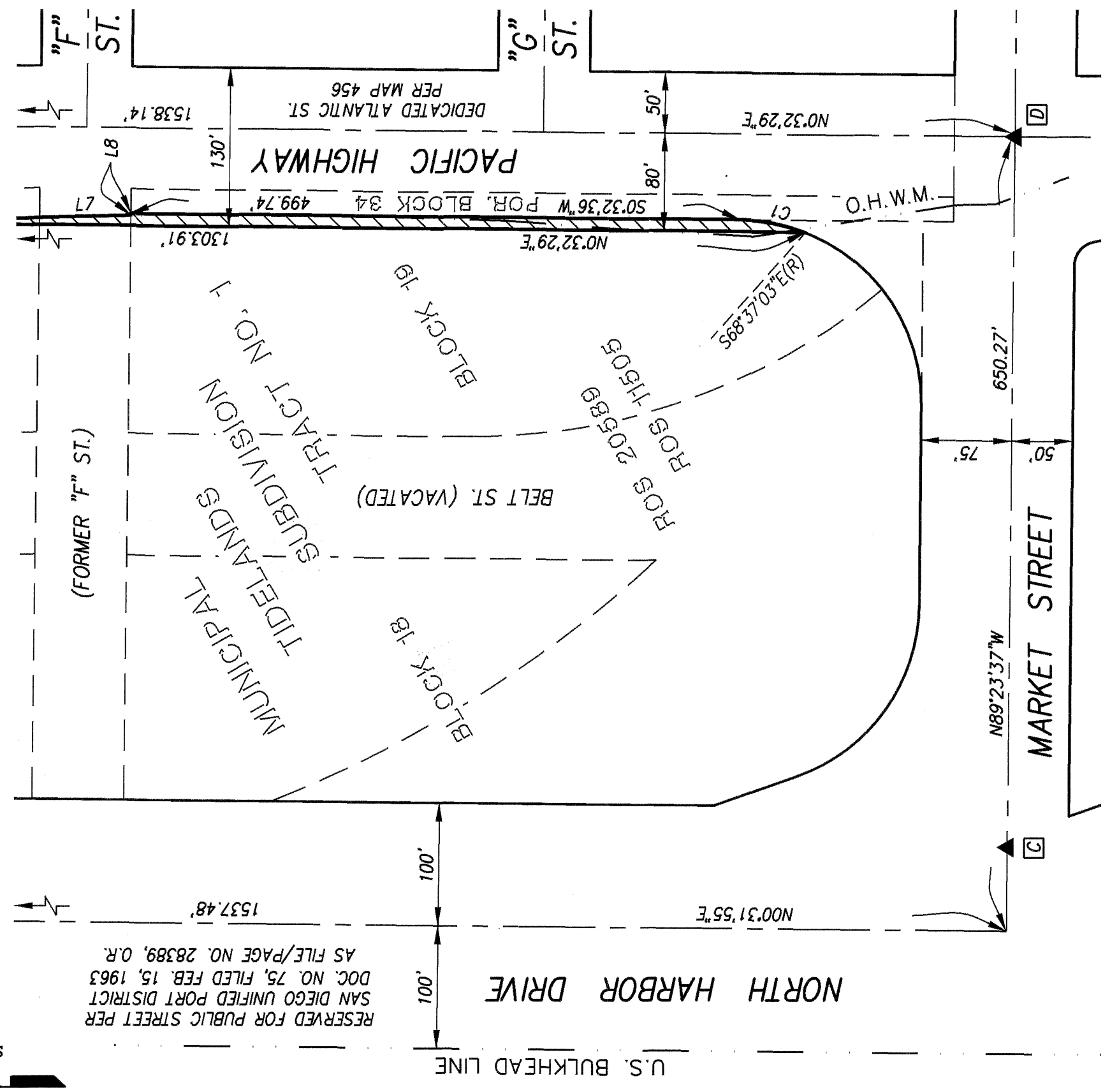
COMPLETED

0 1 2 3 4 5 6 7 8 9 10 11 12 13



LINE TABLE		
LINE	DIRECTION	LENGTH
L7	S1°23'57"E	75.04'
L8	S89°27'49"E	1.65'

CURVE TABLE			
CURVE	DELTA	RADIUS	LENGTH
C1	20°50'21"	150.00'	54.56'



PROJECT DESIGN CONSULTANTS
 701 B Street, Suite 800 San Diego, CA 92101
 619.235.6471 Tel 619.234.0349 Fax

PUBLIC STREET EASEMENT

PORTION OF MUNICIPAL TIDELANDS SUBDIVISION TRACT NO. 1

DESCRIPTION	BY	APPRVD.	DATE	FILMED
ORIGINAL	PDC			

CITY OF SAN DIEGO, CALIFORNIA
 SHEET 4 OF 4 SHEETS

Richard R. Fry 8/13/2021
 FOR CITY ENGINEER DATE

P.T.S. NO. 629103
 I.O. NO. -
 1838-6275/1840-6275
 CCS83 COORDINATES
 198-1715/200-1715
 LAMBERT COORDINATES
 41232-4-B

COMPLETED