

ASSESSOR'S PARCEL NO.:

760-013-39

REFERENCE DRAWING:

- MUNICIPAL TIDELANDS SUBDIVISION TRACT NO. 1
- MISC. MAP NO.'S 18 & 564
- GRADING PLANS 39283-D
- IMPROVEMENT PLANS 41084-D
- ROS NO.'S 20589 & 11505
- SDUPD NO. 518-079

BASIS OF BEARINGS

THE BASIS OF BEARINGS FOR THIS DRAWING IS A PORTION OF THE CENTERLINE OF PACIFIC HIGHWAY PER RECORD OF SURVEY NO. 20589.

I.E., NORTH 0°32'29" EAST

LEGEND:



INDICATES PEDESTRIAN AND VEHICULAR ACCESS EASEMENT GRANTED TO THE CITY OF SAN DIEGO
PARCEL 'A' (AREA = 37,637 SQ. FT. OR 0.864 AC.)
PARCEL 'B' (AREA = 38,164 SQ. FT. OR 0.876 AC.)
PARCEL 'C' (AREA = 56,440 SQ. FT. OR 1.296 AC.)

P.O.B. INDICATES POINT OF BEGINNING

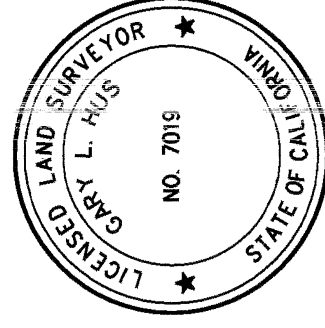
O.H.W.M. INDICATES ORDINARY HIGH WATER MARK

▲ INDICATES FOUND STANDARD CITY WELL MONUMENT - NO RECORD. SHOWN ON ROS 11505 AND ROS 20589.

() INDICATES RECORD DATA PER ROS 11505

[] INDICATES WESTERLY RIGHT-OF-WAY LINE OF PACIFIC HIGHWAY AS DEDICATED TO THE CITY OF SAN DIEGO FOR ROAD AND PUBLIC STREET PURPOSES PER HARBOR COMMISSION RESOLUTION NO. 108 ADOPTED MAY 23, 1935.

[] INDICATES PORTION OF PACIFIC HIGHWAY GRANTED TO THE CITY OF SAN DIEGO FOR PUBLIC STREET EASEMENT PER DEED RECORDED _____, 2020 AS DOCUMENT NO. 2020-_____ O.R. (CITY DRAWING NO. 41232-B)



Gary L. Hus
 GARY L. HUS, L.S. 7019
 DATE 06-23-2021



PROJECT DESIGN CONSULTANTS

701 B Street, Suite 800 San Diego, CA 92101
619.235.6471 Tel 619.234.0349 Fax

DOCUMENT NO.: 2022-0402907

RECORDED: OCTOBER 18, 2022

PEDESTRIAN AND VEHICULAR ACCESS EASEMENT

PORTION OF MUNICIPAL TIDE LANDS SUBDIVISION TRACT NO. 1

DESCRIPTION	BY	APPRVD.	DATE	FILMED
ORIGINAL	PDC			

COMPLETE

CITY OF SAN DIEGO, CALIFORNIA

SHEET 1 OF 4 SHEETS

G. A. R. Jr. 8/13/2021

FOR CITY ENGINEER DATE

P.T.S. NO. 629103

I.O. NO. -

1838-6275/1840-6275

CCS83 COORDINATES

198-1715/200-1715

LAMBERT COORDINATES

41233-1-B

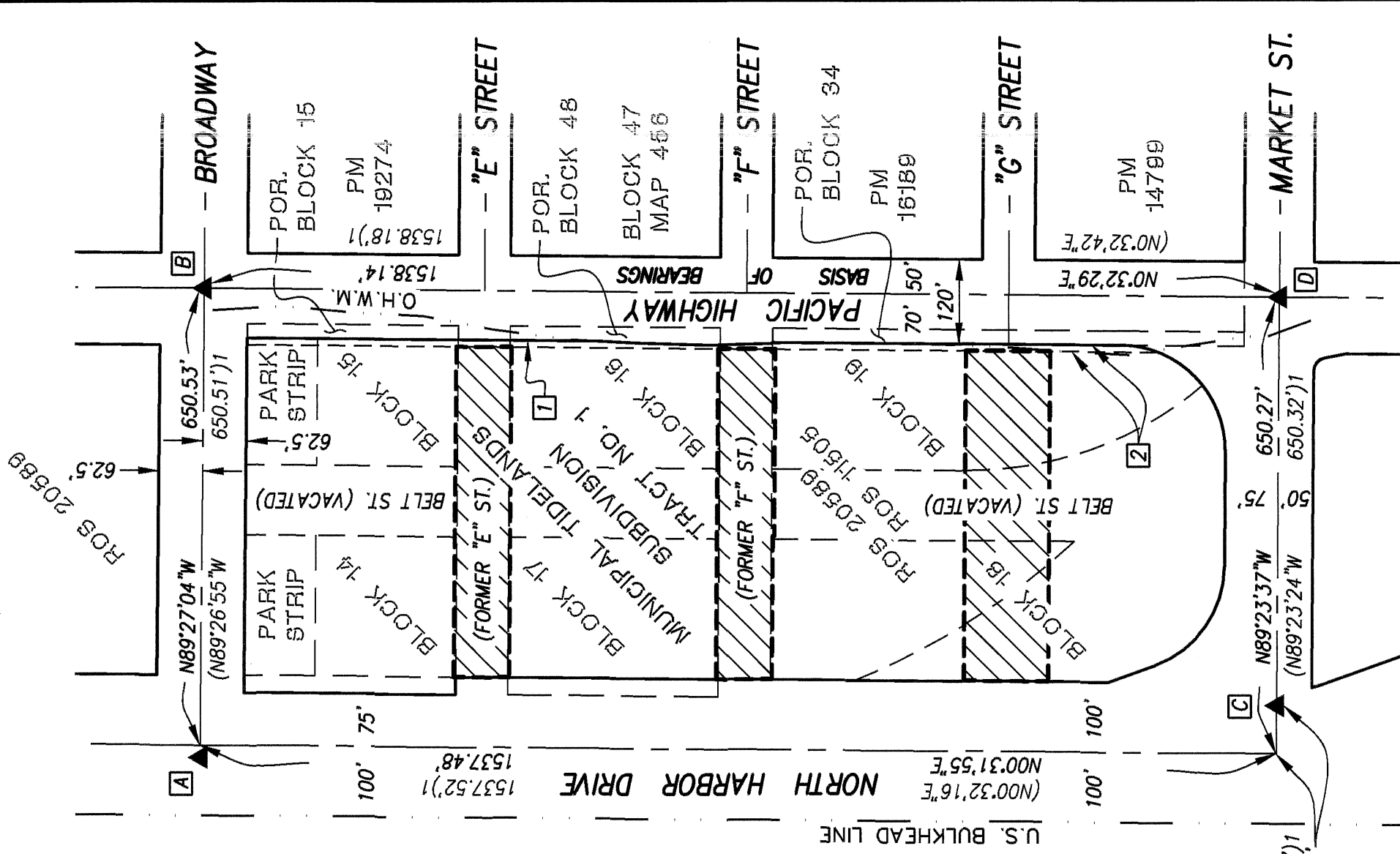
- A** FOUND PER LEGEND. ACCEPTED AS 2' OFFSET WEST OF CENTERLINE INTERSECTION OF HARBOR DRIVE AND BROADWAY PER PORT DISTRICT NOTES BOOK 324/1.
- B** FOUND PER LEGEND. ACCEPTED AS CENTERLINE INTERSECTION OF PACIFIC HIGHWAY AND BROADWAY.
- C** FOUND PER LEGEND. ACCEPTED AS POINT ON THE CENTERLINE OF MARKET ST.
- D** FOUND PER LEGEND. ACCEPTED AS CENTERLINE INTERSECTION OF PACIFIC HIGHWAY AND MARKET ST.

STREET VACATION NOTES:

THE UNDERLYING FEE INTEREST OF BELT STREET WAS ACQUIRED BY THE UNITED STATES OF AMERICA PER DEED RECORDED MARCH 6, 1942 IN BOOK 1323, PAGE 118 OF DEEDS. THIS ACQUISITION ELIMINATED ANY PRIOR PUBLIC STREET RIGHTS.

THE UNDERLYING FEE INTEREST OF FORMER "E" AND "F" STREETS WAS ACQUIRED BY THE UNITED STATES OF AMERICA PER THE DECLARATION OF AMERICA PER THE DECLARATION OF TAKING DOCUMENT NO. 2015-0497868, RECORDED SEPTEMBER 21, 2015, O.R. AND AMENDED PER DOCUMENT NO. 2018-0499152, RECORDED DECEMBER 4, 2018, O.R. THIS ACQUISITION ELIMINATED ANY PRIOR PUBLIC STREET RIGHTS.

SCALE: 1" = 200'



PROJECT DESIGN CONSULTANTS

701 B Street, Suite 800 San Diego, CA 92101
619.236.8471 Tel 619.234.0349 Fax

PEDESTRIAN AND VEHICULAR ACCESS EASEMENT

PORTION OF MUNICIPAL TIDE LANDS SUBDIVISION TRACT NO. 1

DESCRIPTION	BY	APPRVD.	DATE	FILMED
ORIGINAL	PDC			

CITY OF SAN DIEGO, CALIFORNIA

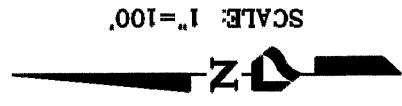
SHEET 2 OF 4 SHEETS

Michael J. [Signature] 8/13/2014
FOR CITY ENGINEER DATE

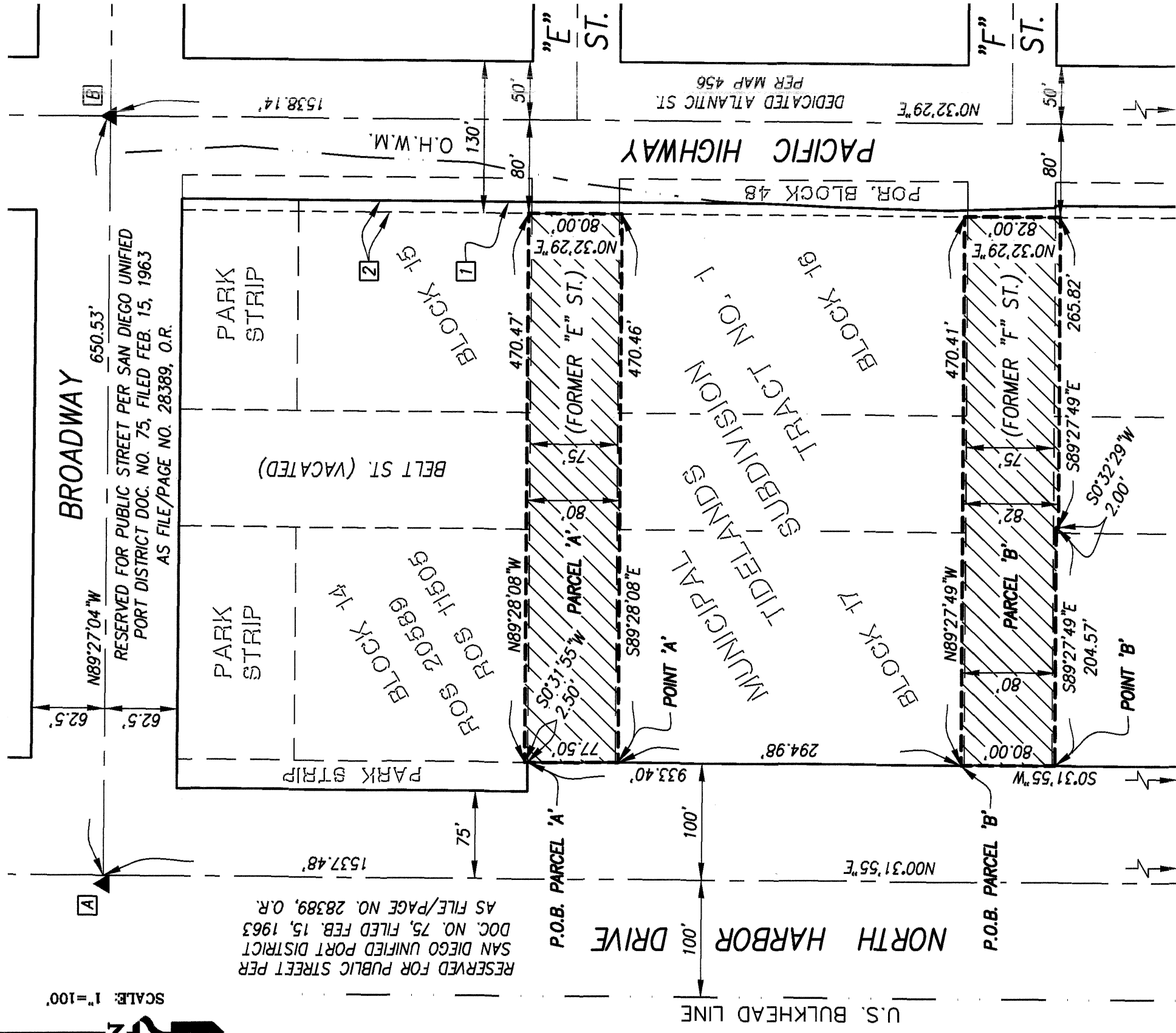
P.T.S. NO.	629103
I.O. NO.	-
1838-6275/1840-6275	
CCS83 COORDINATES	
198-1715/200-1715	
LAMBERT COORDINATES	
	41233-2-B

COMPLETE

0 1 2 3 4 5 6 7 8 9 10 11 12 13



SCALE 1"=100'



PROJECT DESIGN CONSULTANTS
701 B Street, Suite 800 San Diego, CA 92101
619.235.6471 Tel 619.234.0349 Fax

PEDESTRIAN AND VEHICULAR ACCESS EASEMENT

PORTION OF MUNICIPAL TIDELANDS SUBDIVISION TRACT NO. 1

DESCRIPTION	BY	APPRVD.	DATE	FILMED
ORIGINAL	PDC			

COMPLETE

CITY OF SAN DIEGO, CALIFORNIA
SHEET 3 OF 4 SHEETS

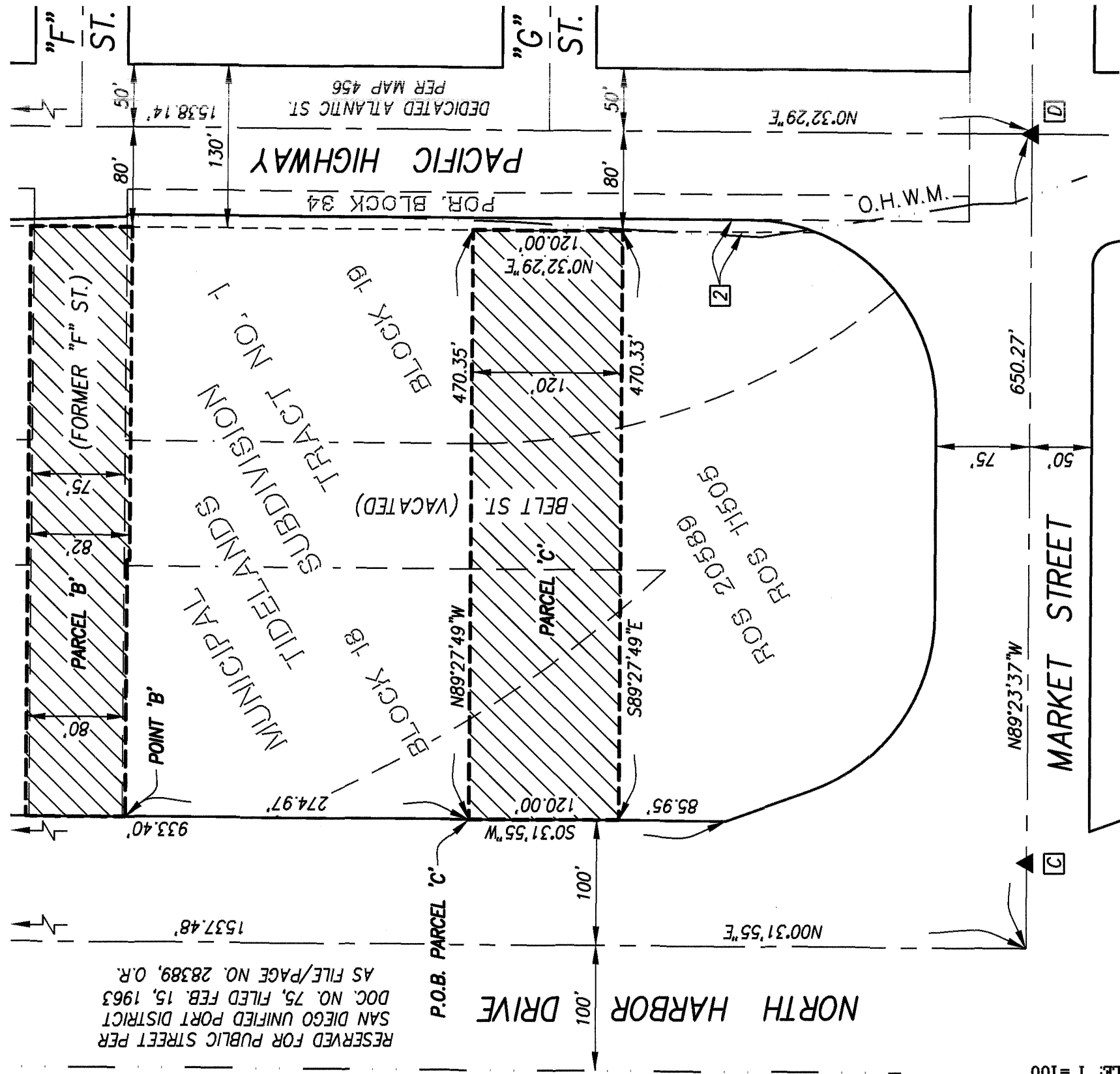
Julie R. ...
FOR CITY ENGINEER DATE 8/13/2024

P.T.S. NO.	629103
I.O. NO.	-
1838-6275/1840-6275	CCS83 COORDINATES
198-1715/200-1715	LAMBERT COORDINATES
41233-3-B	

0 1 2 3 4 5 6 7 8 9 10 11 12 13

RESERVED FOR PUBLIC STREET PER
SAN DIEGO UNIFIED PORT DISTRICT
DOC. NO. 75, FILED FEB. 15, 1963
AS FILE/PAGE NO. 28389, O.R.

U.S. BULKHEAD LINE



SCALE: 1"=100'



PROJECT DESIGN CONSULTANTS
701 B Street, Suite 800 San Diego, CA 92101
619.235.6471 Tel 619.234.0349 Fax

PEDESTRIAN AND VEHICULAR ACCESS EASEMENT

PORTION OF MUNICIPAL TIDELANDS SUBDIVISION TRACT NO. 1

DESCRIPTION	BY	APPRVD.	DATE	FILMED
ORIGINAL	PDC			

COMPLETE

CITY OF SAN DIEGO, CALIFORNIA

SHEET 4 OF 4 SHEETS

Michael A. Ly
FOR CITY ENGINEER DATE

P.T.S. NO.	629103
I.O. NO.	-
1838-6275/1840-6275	
CCS83 COORDINATES	
198-1715/200-1715	
LAMBERT COORDINATES	
41233-4-B	