

EXHIBIT "B"

LEGEND

- INDICATES WATER EASEMENT ACQUIRED AREA:
- PARCEL A: AREA = 2660.93 SQ. FT. (0.061 ACRES)
- PARCEL B: AREA = 1720.47 SQ. FT. (0.039 ACRES)
- SUBDIVISION BOUNDARY
- RIGHT-OF-WAY
- EASEMENT LINE
- CENTERLINE

TP.O.B. TRUE POINT OF BEGINNING
P.O.B. POINT OF BEGINNING
(R) RADIAL BEARING

BASIS OF BEARINGS

THE BASIS OF BEARINGS FOR THIS DRAWING IS A PORTION OF THE EASTERLY LINE OF LOT 1, AS SHOWN ON MAP NO. 15736, I.E. N49°26'02"E

LINE/CURVE DATA

- L1 N47°31'05"E 10.79'
- L2 N76°06'49"W 10.20'
- L3 S76°06'49"E (R) 23.00'
- L4 N13°53'11"E 14.00'
- C1 Δ=90°58'37" R=28.00' L=44.46'
- C2 Δ=04°34'14" R=502.00' L=40.05'
- C3 Δ=01°54'52" R=502.00' L=16.77'
- C4 Δ=08°04'25" R=35.00' L=4.93'
- C5 Δ=20°18'16" R=452.00' L=160.18'
- C6 Δ=10°06'54" R=440.00' L=77.68'
- C7 Δ=25°43'29" R=100.00' L=44.90'
- C8 Δ=01°47'44" R=335.00' L=10.50'
- C9 Δ=06°20'12" R=335.00' L=37.05'
- C10 Δ=04°02'56" R=335.00' L=23.67'
- C11 Δ=10°23'08" R=335.00' L=60.72'

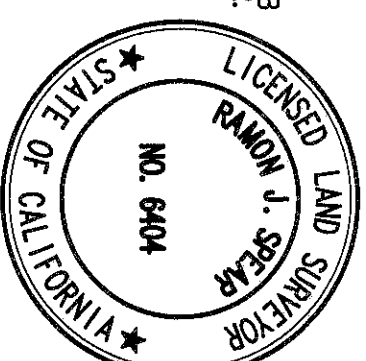
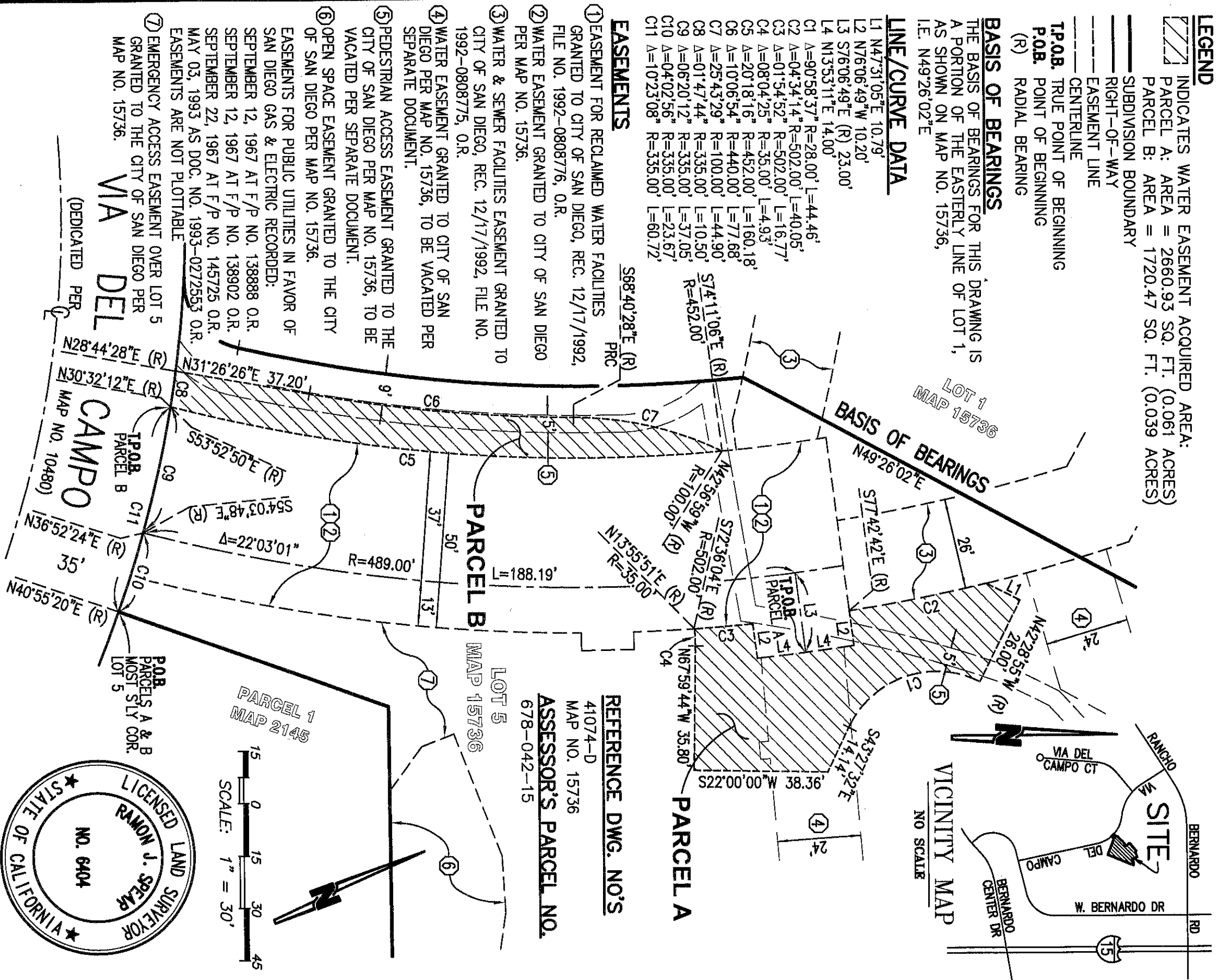
EASEMENTS

- ① EASEMENT FOR RECLAIMED WATER FACILITIES GRANTED TO CITY OF SAN DIEGO, REC. 12/17/1992, FILE NO. 1992-0808776, O.R.
- ② WATER EASEMENT GRANTED TO CITY OF SAN DIEGO PER MAP NO. 15736.
- ③ WATER & SEWER FACILITIES EASEMENT GRANTED TO CITY OF SAN DIEGO, REC. 12/17/1992, FILE NO. 1992-0808775, O.R.
- ④ WATER EASEMENT GRANTED TO CITY OF SAN DIEGO PER MAP NO. 15736, TO BE VACATED PER SEPARATE DOCUMENT.
- ⑤ PEDESTRIAN ACCESS EASEMENT GRANTED TO THE CITY OF SAN DIEGO PER MAP NO. 15736, TO BE VACATED PER SEPARATE DOCUMENT.
- ⑥ OPEN SPACE EASEMENT GRANTED TO THE CITY OF SAN DIEGO PER MAP NO. 15736.
- ⑦ EMERGENCY ACCESS EASEMENT OVER LOT 5 GRANTED TO THE CITY OF SAN DIEGO PER MAP NO. 15736.

EASEMENTS FOR PUBLIC UTILITIES IN FAVOR OF SAN DIEGO GAS & ELECTRIC RECORDED:

SEPTEMBER 12, 1967 AT F/P NO. 138888 O.R.
 SEPTEMBER 12, 1967 AT F/P NO. 138902 O.R.
 SEPTEMBER 22, 1967 AT F/P NO. 145725 O.R.
 MAY 03, 1993 AS DOC. NO. 1993-0272553 O.R.

EASEMENTS ARE NOT PLOTTABLE



SPEAR & ASSOCIATES, INC
 CIVIL ENGINEERING AND LAND SURVEYING
 475 PRODUCTION STREET, SAN MARCOS, CA. 92078
 PHONE (760) 736-2940 FAX (760) 718-0177

By: *R. Spear* 8/3/2020
 RAMON J. SPEAR, L.S. 6404 DATE

WATER EASEMENT
LOT 5 OF THE VISTA AT RANCHO BERNARDO, MAP NO. 15736

DESCRIPTION	BY	APPROVED	DATE	FILMED	CITY OF SAN DIEGO, CALIFORNIA	PTS #
ORIGINAL	S&A				SHEET 1 OF 1 SHEET	621307
						V.I.D. NO. N/A
						1950-6301
						NAD83 COORDINATES
						310-1741
						LAMBERT COORDINATES
						41241-B