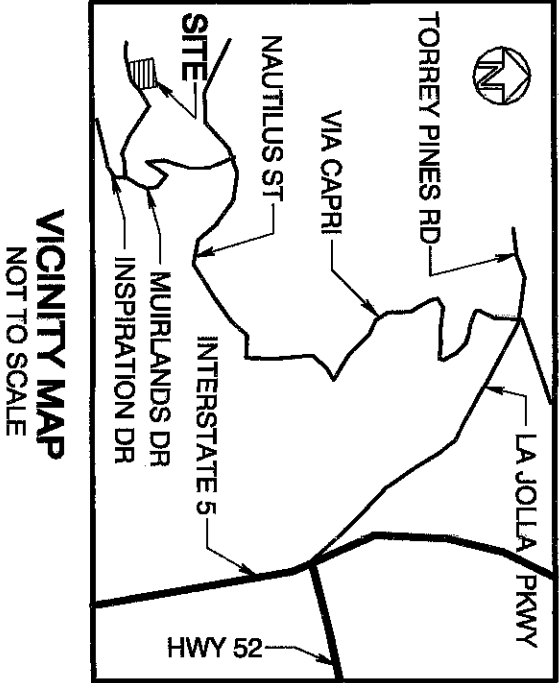
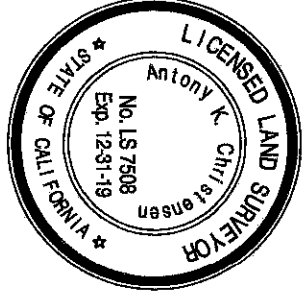


BASIS OF BEARINGS

THE NORTH LINE OF LOT D PER
MAP NO. 3554
I.E. NORTH 53°22'10" EAST



**CHRISTENSEN ENGINEERING
& SURVEYING**

7888 SILVERTON AVENUE, SUITE J
SAN DIEGO, CA 92126
(858) 271-9901

Anthony K. Christensen
ANTHONY K. CHRISTENSEN
L.S. 7508, EXPIRES 12-31-19

JUNE 19, 2019

RECORDED July 16, 2019

DOCUMENT NO. 2019-0285399

DRAINAGE EASEMENT

LOTS 16, 17 BLOCK 12, MAP NO 2024

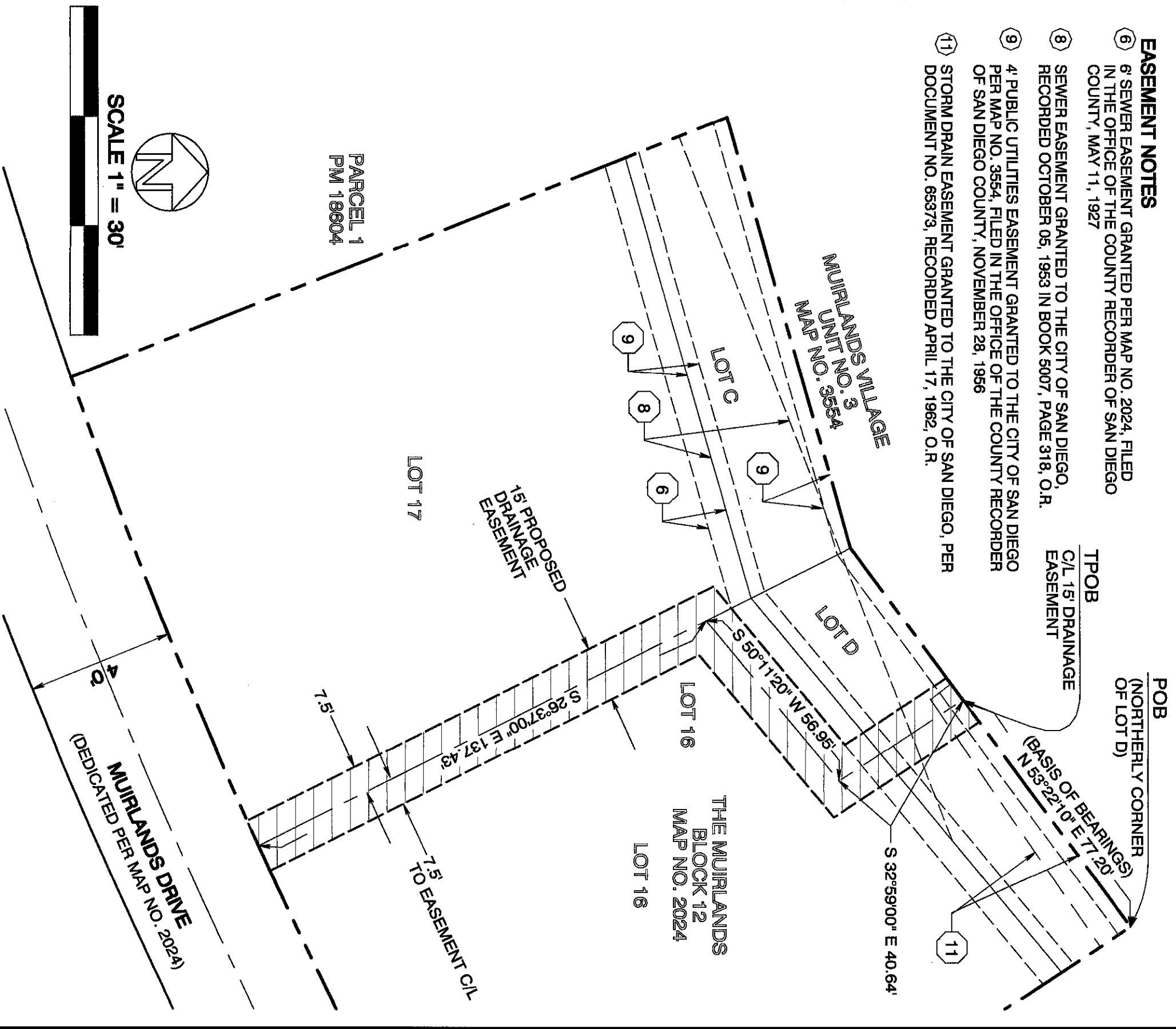
LOT "D", MAP NO. 3554

DESCRIPTION	BY	APPROVED	DATE	FILMED	CITY OF SAN DIEGO, CALIFORNIA		P.T.S.
ORIGINAL	CE&S				SHEET 1 OF 2 SHEETS		634120
							IO NO. N/A
							1880-6247
							CCS 83 COORDINATES
							240-1687
							LAMBERT COORDINATES
COMPLETED					SECTION HEAD		41340-1-B

EXHIBIT "B"

EASEMENT NOTES

- 6 SEWER EASEMENT GRANTED PER MAP NO. 2024, FILED IN THE OFFICE OF THE COUNTY RECORDER OF SAN DIEGO COUNTY, MAY 11, 1927
- 8 SEWER EASEMENT GRANTED TO THE CITY OF SAN DIEGO, RECORDED OCTOBER 05, 1953 IN BOOK 5007, PAGE 318, O.R.
- 9 4' PUBLIC UTILITIES EASEMENT GRANTED TO THE CITY OF SAN DIEGO PER MAP NO. 3554, FILED IN THE OFFICE OF THE COUNTY RECORDER OF SAN DIEGO COUNTY, NOVEMBER 28, 1956
- 11 STORM DRAIN EASEMENT GRANTED TO THE CITY OF SAN DIEGO, PER DOCUMENT NO. 65373, RECORDED APRIL 17, 1962, O.R.
- TPOB
C/L 15' DRAINAGE
EASEMENT
(BASIS OF BEARINGS)
N 53°22'10" E 77' 20"
OF LOT D)
- 11



A2017-98

CHRISTENSEN ENGINEERING & SURVEYING

7888 SILVERTON AVENUE, SUITE J
SAN DIEGO, CA 92126
(858) 271-9901


JUNE 19, 2019

RECORDED July 16, 2019
DOCUMENT NO. 2019-0285399

DRAINAGE EASEMENT

**LOTS 16, 17 BLOCK 12, MAP NO 2024
LOT "D", MAP NO. 3554**

DESCRIPTION	BY	APPROVED	DATE	FILMED	CITY OF SAN DIEGO, CALIFORNIA		P.T.S.
ORIGINAL	CE&S				SHEET 2 OF 2 SHEETS		634120
							IO NO. N/A
							1880-6247
					DATE		CCS 83 COORDINATES
					FOR CITY ENGINEER		
					DIVISION HEAD		240-1687
					SECTION HEAD		LAMBERT COORDINATES
COMPLETED							41340-2-B
STATUS							