

# EXHIBIT "B"

EXHIBIT "B"

## ASSESSOR'S PARCEL NO.

444-060-24

## REFERENCE DRAWINGS

- MM 36
- MAP 1453
- MAP 1600
- DWG 40132-D
- VTM 1162656
- DWG 40335-B
- MAP 3347
- MAP 4258
- MAP 16266
- DWG 40133-D
- DWG 40789-B

## BASIS OF BEARINGS

THE BASIS OF BEARINGS FOR THIS PLAT IS A PORTION OF THE WEST LINE OF MAP NO. 16266.

I.E.: NORTH 0°28'21" EAST

## LEGEND

 INDICATES DRAINAGE EASEMENT ACQUIRED  
ACQUIRED AREA = 887.67 SQ. FT.

P.O.C. INDICATES POINT OF COMMENCEMENT

T.P.O.B. INDICATES TRUE POINT OF BEGINNING

( ) INDICATES RECORD DATA PER MAP 16266

 INDICATES MAP 16266 BOUNDARY

 INDICATES CENTERLINE

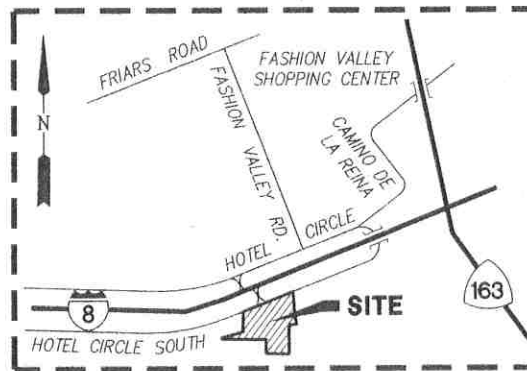
 INDICATES EXISTING EASEMENT

 INDICATES ACCESS RIGHTS RELINQUISHED  
PER MAP 16266

## NON-PLOTTABLE EASEMENTS

THE FOLLOWING EASEMENTS HAVE NO EXACT LOCATION AND THEREFORE CANNOT BE PLOTTED.

1. EXISTING EASEMENT GRANTED TO SAN DIEGO GAS & ELECTRIC COMPANY FOR PUBLIC UTILITIES PER DOCUMENT RECORDED MAY 14, 1945, IN BOOK 1869, PAGE 241 OF OFFICIAL RECORDS.
2. EXISTING EASEMENT GRANTED TO SAN DIEGO GAS & ELECTRIC COMPANY FOR PUBLIC UTILITIES PER DOCUMENT RECORDED SEPTEMBER 23, 1975, AS INST. NO. 75-258974 OF OFFICIAL RECORDS.
3. EXISTING EASEMENT GRANTED TO SAN DIEGO GAS & ELECTRIC COMPANY FOR PUBLIC UTILITIES PER DOCUMENT RECORDED SEPTEMBER 28, 2018, AS INST. NO. 2018-405395 OF OFFICIAL RECORDS.
4. EXISTING EASEMENT GRANTED TO SAN DIEGO GAS & ELECTRIC COMPANY FOR PUBLIC UTILITIES PER DOCUMENT RECORDED OCTOBER 18, 2018, AS INST. NO. 2018-0433747 OF OFFICIAL RECORDS.



VICINITY MAP

NOT TO SCALE

## EASEMENT NOTES (CONT'D ON SHEET 2)

- ① 4' WIDE PUBLIC UTILITY EASEMENT GRANTED PER MAP 3347.
- ② 12' WIDE UTILITY EASEMENT GRANTED TO SDG&E PER DOC. REC. 7/11/1957 IN BK. 6658, PG. 269, O.R.
- ③ 10' WIDE SEWER EASEMENT GRANTED TO CITY OF SAN DIEGO PER DOC. REC. 9/25/1961 AS INST. NO. 166797, O.R.
- ④ 15' WIDE SEWER EASEMENT GRANTED TO CITY OF SAN DIEGO PER DOC. REC. 5/06/1976 AS INST. NO. 76-136705, O.R.
- ⑤ COVENANT OF EASEMENT IN FAVOR OF THE CITY OF SAN DIEGO PER DOC. REC. 2/15/2018 AS INST. NO. 2018-0060240, O.R.
- ⑥ PEDESTRIAN ACCESS, WATER, SEWER, SEWER/DRAINAGE AND SEWER EASEMENTS OF VARIOUS WIDTHS GRANTED PER MAP 16266 (WIDTH AND TYPE NOTED ACCORDINGLY ON SHEET 2).
- ⑦ 25' WIDE SEWER EASEMENT GRANTED TO CITY OF SAN DIEGO PER DOC. REC. 9/12/2018 AS INST. NO. 2018-00377484, O.R.
- ⑧ 12' WIDE UTILITY EASEMENT GRANTED TO SDG&E PER DOC. REC. 1/10/1964 AS INST. NO. 5598, O.R.



*Gary L. Hus*  
GARY L. HUS, L.S. 7019

07-30-2019  
DATE



**PROJECT DESIGN CONSULTANTS**  
Planning | Landscape Architecture | Engineering | Survey  
701 B Street, Suite 800 San Diego, CA 92101  
619.235.8471 Tel 619.234.0349 Fax

DOCUMENT NO. 2019-0325148

RECORDED Aug. 05, 2019

## DRAINAGE EASEMENT

BEING A PORTION OF LOT 1 OF LEGACY INTERNATIONAL CENTER,  
ACCORDING TO MAP THEREOF NO. 16266

DESCRIPTION	BY	APPRVD.	DATE	FILMED
ORIGINAL	PDC	SD.	8/5/19	

CITY OF SAN DIEGO, CALIFORNIA  
SHEET 1 OF 3 SHEETS

*Yuhel R. X. Pay* 8/2/19  
FOR CITY LAND SURVEYOR DATE

P.T.S. NO. 636096  
I.O. NO. N/A

1856-6275  
CCS83 COORDINATES  
216-1715  
LAMBERT COORDINATES

ACQUIRED

STATUS

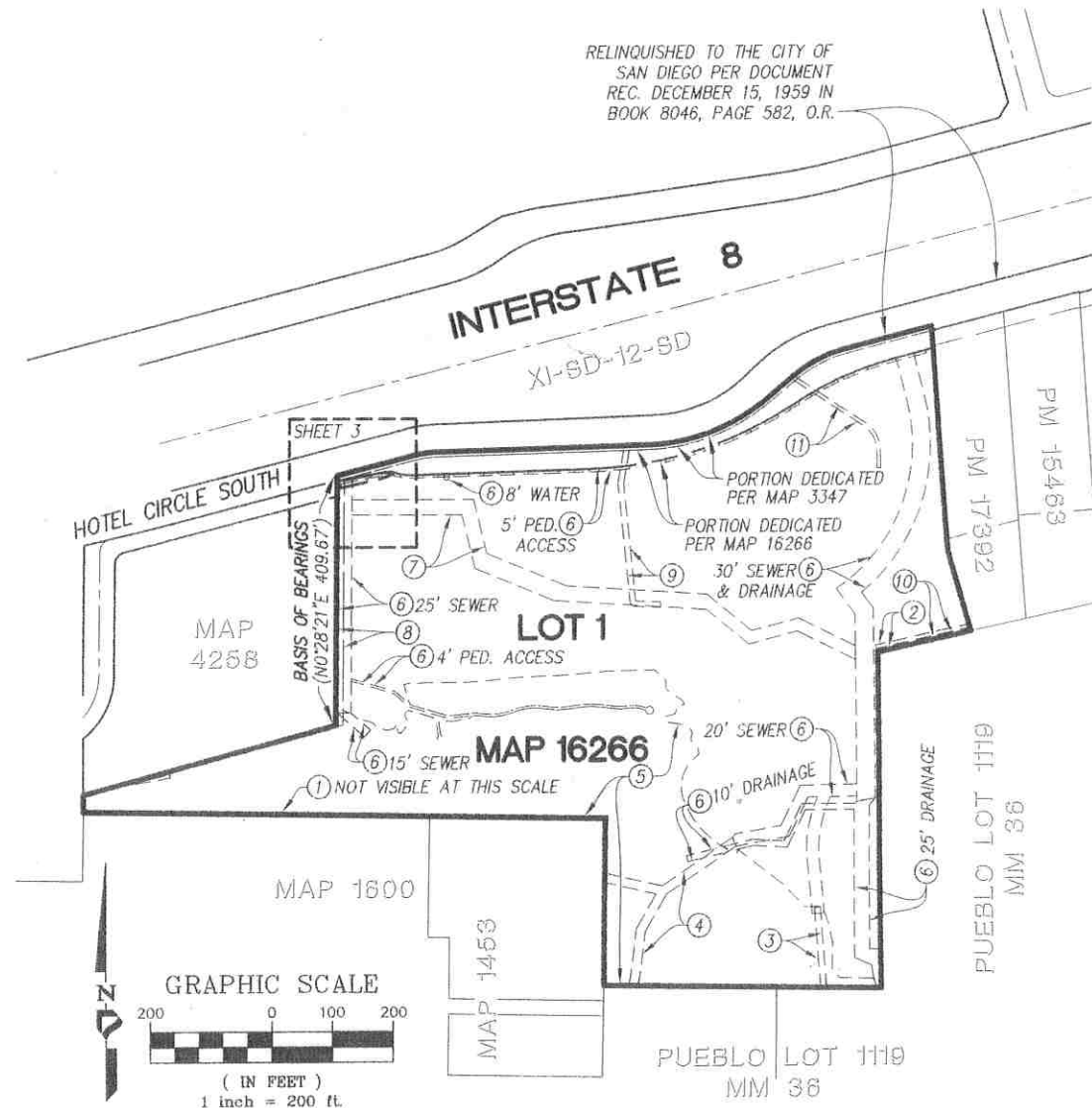
41376-1-B

# EXHIBIT "B"

## EXHIBIT "B"

### EASEMENT NOTES (CONT'D)

- ⑨ 9' WIDE UTILITY EASEMENT GRANTED TO SDG&E PER DOC. REC. 12/10/1969 AS INST. NO. 224622, O.R.
- ⑩ 6' WIDE TELEVISION EQUIPMENT EASEMENT GRANTED TO MISSION CABLE TV, INC. PER DOC. REC. 4/29/1976 AS INST. NO. 129096, O.R.
- ⑪ 6' WIDE UTILITY EASEMENT GRANTED TO SDG&E PER DOC. REC. 9/12/1979 AS INST. NO. 79-382266, O.R.



**PROJECT DESIGN CONSULTANTS**  
Planning | Landscape Architecture | Engineering | Survey  
701 B Street, Suite 800 San Diego, CA 92101  
619.236.6471 Tel 619.234.0349 Fax

### DRAINAGE EASEMENT

BEING A PORTION OF LOT 1 OF LEGACY INTERNATIONAL CENTER,  
ACCORDING TO MAP THEREOF NO. 16266

DESCRIPTION	BY	APPRVD.	DATE	FILMED
ORIGINAL	PDC	S.O.	8/5/19	

**CITY OF SAN DIEGO, CALIFORNIA**  
SHEET 2 OF 3 SHEETS

*Frederick R. A. Py* 8/12/19  
FOR CITY LAND SURVEYOR DATE

P.T.S. NO. 636096  
I.O. NO. N/A

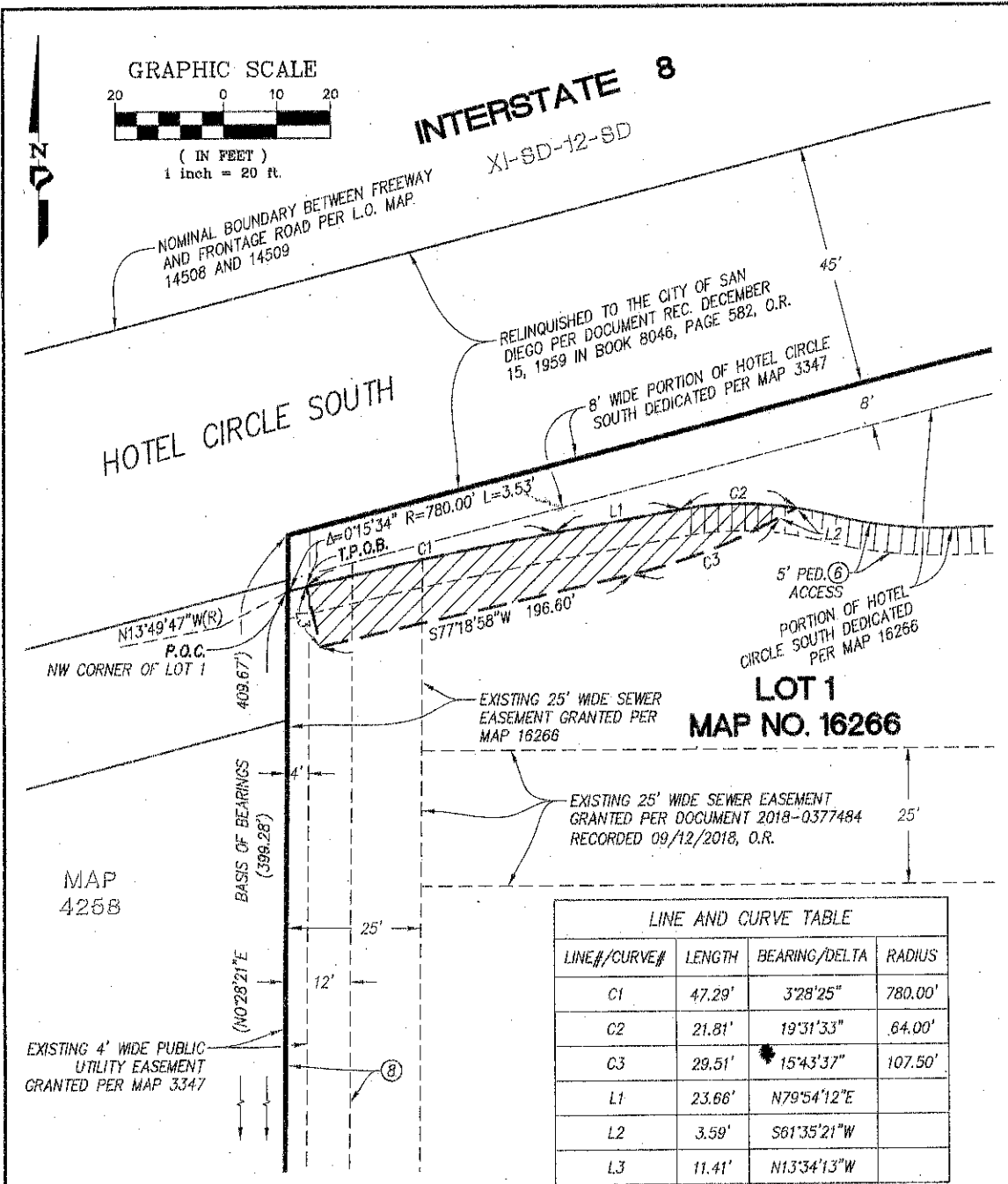
1856-6275  
CCS83 COORDINATES  
216-1715  
LAMBERT COORDINATES

ACQUIRED

STATUS

41376-2-B

# EXHIBIT "B"



**PROJECT DESIGN CONSULTANTS**  
Planning | Landscape Architecture | Engineering | Survey  
701 B Street, Suite 800 San Diego, CA 92101  
619.235.6471 Tel 619.234.0349 Fax

## DRAINAGE EASEMENT

BEING A PORTION OF LOT 1 OF LEGACY INTERNATIONAL CENTER,  
ACCORDING TO MAP THEREOF NO. 16266

DESCRIPTION	BY	APPRVD.	DATE	FILMED	CITY OF SAN DIEGO, CALIFORNIA	P.T.S. NO. 638096
ORIGINAL	PDC	S.D.	8/2/19		SHEET 3 OF 3 SHEETS	I.O. NO. N/A
					<i>Frederick R. &amp; Ay</i> 8/2/19	1856-6275
					FOR CITY LAND SURVEYOR DATE	CCS83 COORDINATES
						216-1715
						LAMBERT COORDINATES
						41376-3-B

ACQUIRED

STATUS