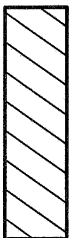


ASSESSORS' PARCEL NO.

340-180-29

LEGEND



INDICATES WATER EASEMENT GRANTED PER DOC. NO. 1997-0367052-VACATED. AREA = 8,460.18 SQ. FT. (0.194 ACRES)

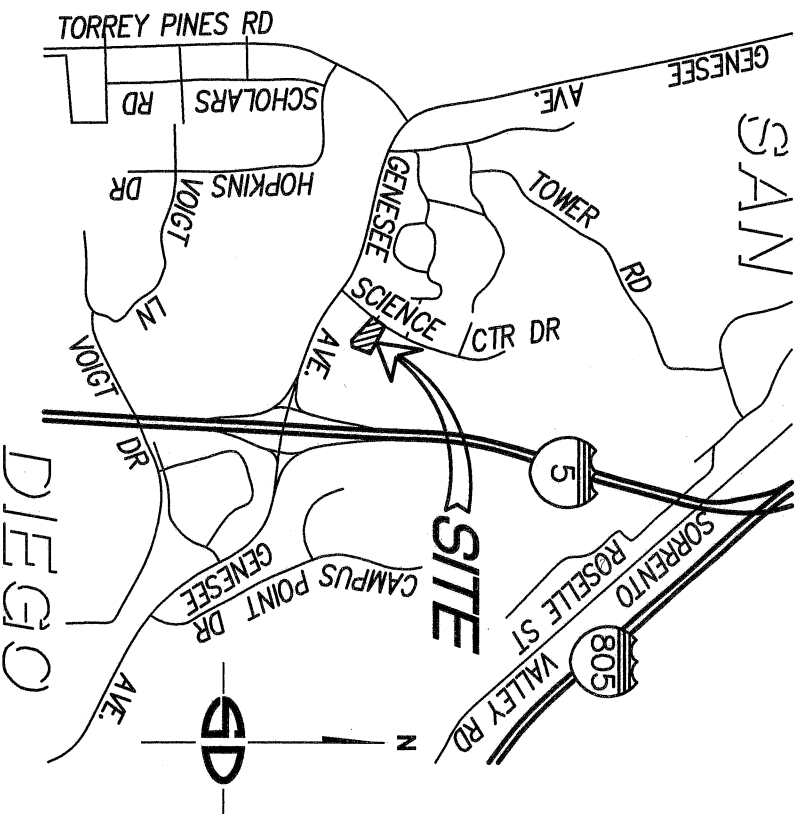
REFERENCE DRAWINGS

MAP NO. 12845
P.M. NO. 17826
DWG. NO. 18553-B
DWG. NO. 41059-D

EASEMENTS

- 1 NON-EXCLUSIVE EASEMENTS, AS DESIGNATED AND DELINEATED IN GRANT DEED TO GENESEE PROPERTIES, INC., A WYOMING CORPORATION, PER INSTRUMENT NO. 86-436555, RECORDED SEPTEMBER 30, 1986, O.R. (NON-PLOTTABLE)
- 2 DRAINAGE, BUILDING RESTRICTED EASEMENT AND INCIDENTAL PURPOSES, PER TRACT MAP NO. 12845, RECORDED JULY 23, 1991.
- 3 EASEMENT TO SAN DIEGO GAS & ELECTRIC COMPANY FOR PUBLIC UTILITIES AND INCIDENTAL PURPOSES PER INSTRUMENT NO. 1993-0396204, RECORDED JUNE 23, 1993, O.R. (NON-PLOTTABLE)
- 4 DECLARATION OF COVENANTS, CONDITIONS AND RESTRICTIONS FOR TORREY PINES SCIENCE CENTER, UNIT 2 PER INSTRUMENT NO. 94-0405385, RECORDED JUNE 27, 1994, O.R. (NON-PLOTTABLE)
- 5 EASEMENT TO CITY OF SAN DIEGO, A MUNICIPAL CORPORATION FOR CONSTRUCT, RECONSTRUCT, MAINTAIN, OPERATE AND REPAIR WATER FACILITIES INCLUDING ANY OR ALL APPURTENANCES THERETO, TOGETHER WITH THE RIGHT OF INGRESS AND EGRESS AND INCIDENTAL PURPOSES PER INSTRUMENT NO. 97-0361293, RECORDED JULY 29, 1997, O.R.

- R- INDICATES PROPERTY LINE
- R/W- INDICATES RIGHT-OF-WAY LINE
- ℄- INDICATES STREET CENTERLINE
- P.O.B. INDICATES POINT OF BEGINNING.
- T.P.O.B. INDICATES TRUE POINT OF BEGINNING.
- () INDICATES RECORD DATA PER DOC. NO. 1997-0367052.



VICINITY MAP
NO SCALE

SNIPES-DYE ASSOCIATES
8348 CENTER DRIVE SUITE G,
LA MESA, CA 91942

WILLIAM A. SNIPES L.S. 8034
EXPIRES 12-31-22

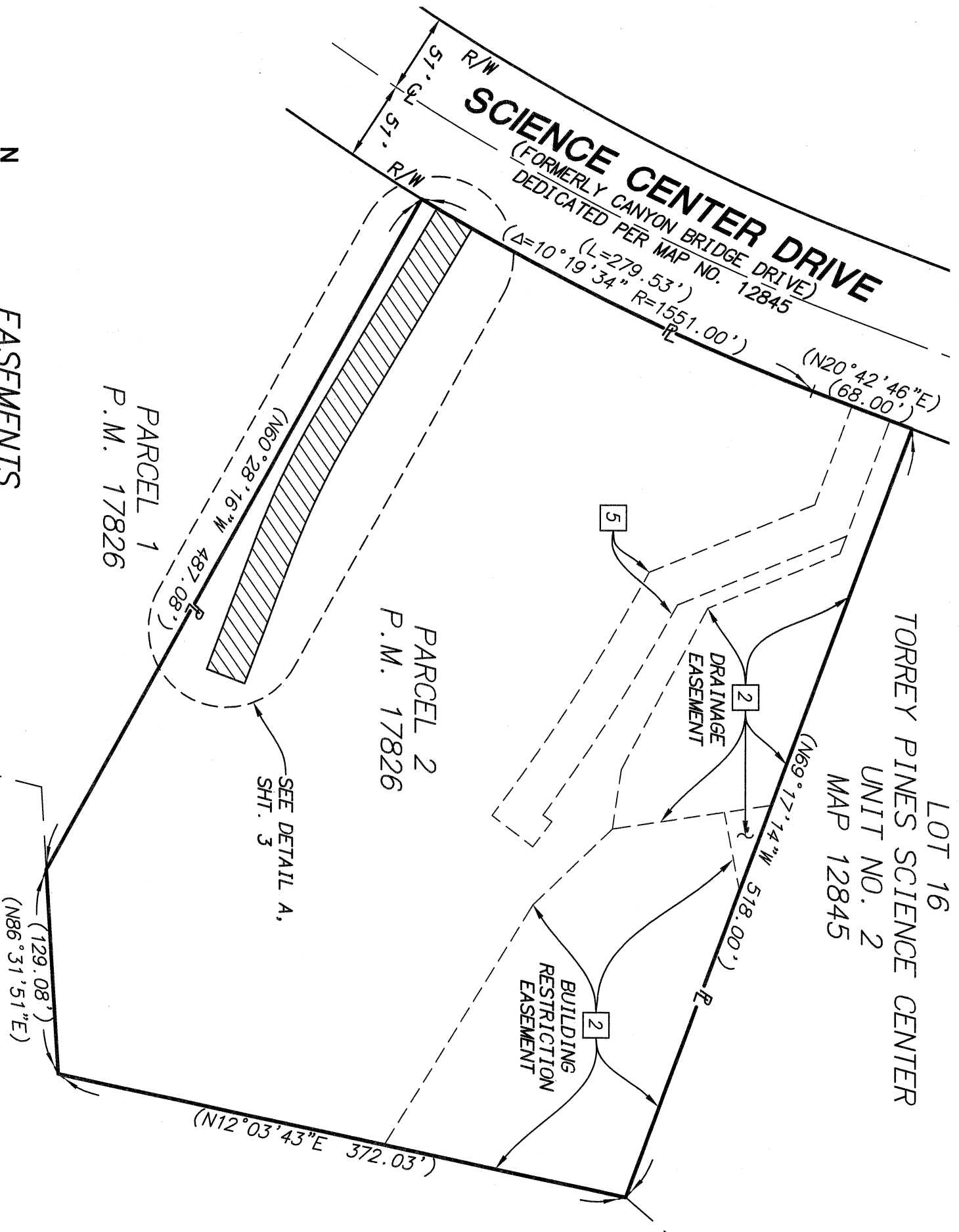


DOCUMENT NO. 2021-0339147
RECORDED MAY 03, 2021
RESOLUTION NO. CM-7010
ADOPTED MARCH 17, 2021

WATER EASEMENT VACATION

IN PARCEL 2 OF P.M. NO. 17826

DESCRIPTION	BY	APPROVED	DATE	FILMED	CITY OF SAN DIEGO, CALIFORNIA		P.T.S. NO.
ORIGINAL	SDA	S.O.	5/13/21		SHEET 1 OF 3 SHEETS		648573
					FOR CITY LAND SURVEYOR		1904-6259
					DATE		NAD 83 COORDS.
							264-1699
							LAMBERT COORDINATES
COMPLETED					41631-1-B		



EASEMENTS

- 1 NON-EXCLUSIVE EASEMENTS, AS DESIGNATED AND DELINEATED IN GRANT DEED TO GENESEE PROPERTIES, INC., A WYOMING CORPORATION, PER INSTRUMENT NO. 86-436555, RECORDED SEPTEMBER 30, 1986, O.R. (NON-PLOTTABLE)
- 2 DRAINAGE, BUILDING RESTRICTED EASEMENT AND INCIDENTAL PURPOSES, PER TRACT MAP NO. 12845, RECORDED JULY 23, 1991.
- 3 EASEMENT TO SAN DIEGO GAS & ELECTRIC COMPANY FOR PUBLIC UTILITIES AND INCIDENTAL PURPOSES PER INSTRUMENT NO. 1993-0396204, RECORDED JUNE 23, 1993, O.R. (NON-PLOTTABLE)
- 4 DECLARATION OF COVENANTS, CONDITIONS AND RESTRICTIONS FOR TORREY PINES SCIENCE CENTER, UNIT 2 PER INSTRUMENT NO. 94-0405385, RECORDED JUNE 27, 1994, O.R. (NON-PLOTTABLE)
- 5 EASEMENT TO CITY OF SAN DIEGO, A MUNICIPAL CORPORATION FOR CONSTRUCT, RECONSTRUCT, MAINTAIN, OPERATE AND REPAIR WATER FACILITIES INCLUDING ANY OR ALL APPURTENANCES THERETO, TOGETHER WITH THE RIGHT OF INGRESS AND EGRESS AND INCIDENTAL PURPOSES PER INSTRUMENT NO. 97-0361293, RECORDED JULY 29, 1997, O.R. (NON-PLOTTABLE)



SNIPES-DYE ASSOCIATES
8348 CANYON DRIVE SUITE G,
LA MEESA, CA 91942

WILLIAM A. SNIPES L.S. 8034
EXPIRES 12-31-22



3/17/21
DATE

WATER EASEMENT VACATION

IN PARCEL 2 OF P.M. NO. 17826

DESCRIPTION	BY	APPROVED	DATE	FILMED
ORIGINAL	SDA	S.O.	5/13/21	

CITY OF SAN DIEGO, CALIFORNIA
SHEET 2 OF 3 SHEETS
FOR CITY LAND SURVEYOR

4/18/2021
DATE

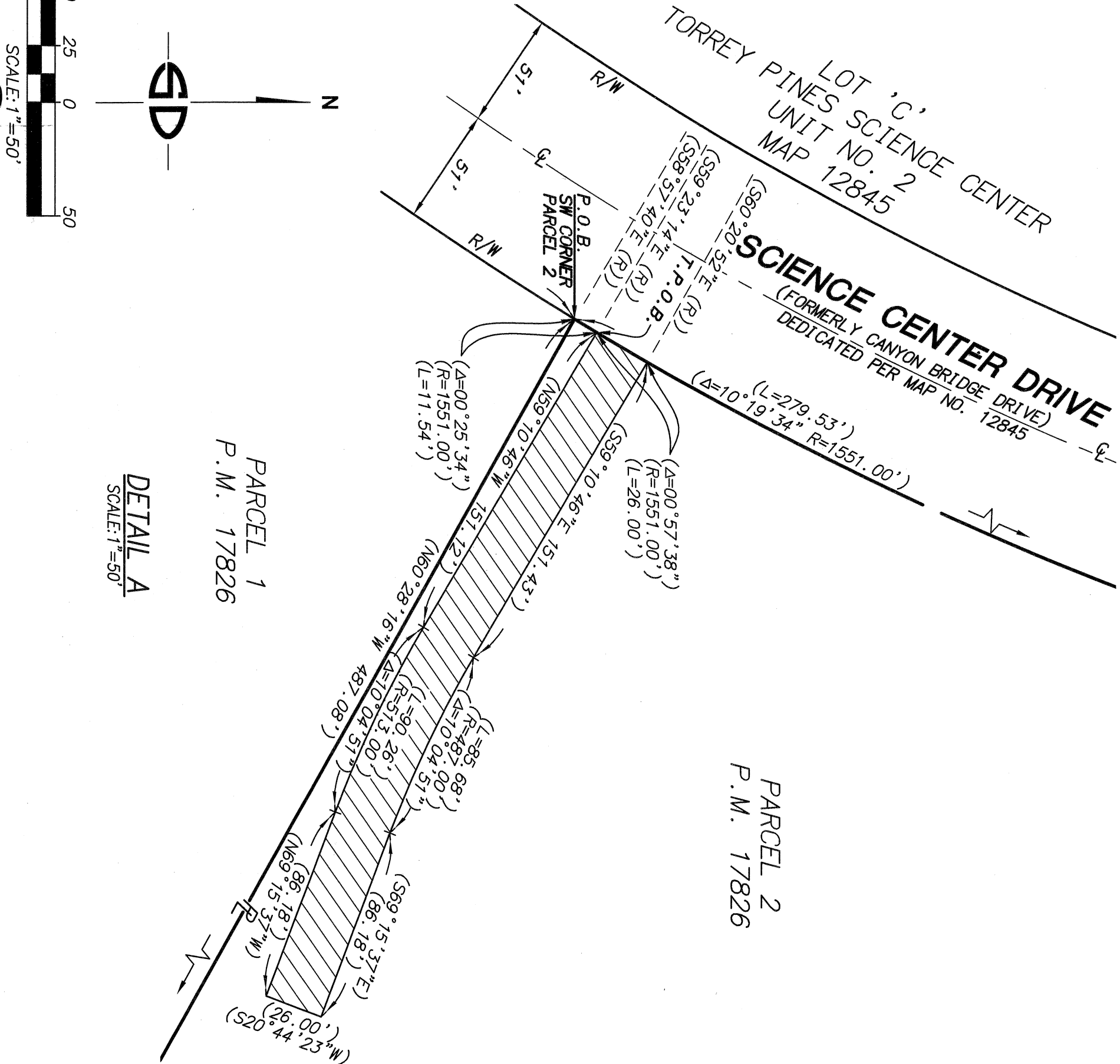
P.T.S. NO. 648573

1904-6259
NAD 83 COORDS.

264-1699
LAMBERT COORDINATES

COMPLETED

41631-2-B



SNIPES-DYE ASSOCIATES
8348 CENTER DRIVE SUITE G,
LA MESA, CA 91942

WILLIAM A. SNIPES L.S. 8034
EXPIRES 12-31-22

DATE 5/17/21

LICENSED LAND SURVEYOR
WILLIAM A. SNIPES
Exp. 12-31-22
No. 8034
STATE OF CALIFORNIA

WATER EASEMENT VACATION
IN PARCEL 2 OF P.M. NO. 17826

DESCRIPTION	BY	APPROVED	DATE	FILMED	CITY OF SAN DIEGO, CALIFORNIA	P.T.S. NO.
ORIGINAL	SDA	S.O.	5/13/21		SHEET 3 OF 3 SHEETS	648573
					<u>WILLIAM A. SNIPES</u>	
					FOR CITY LAND SURVEYOR	
					DATE <u>4/8/2021</u>	
						1904-6259
						NAD 83 COORDS.
						264-1699
						LAMBERT COORDINATES
COMPLETED						41631-3-B