

ASSESSOR'S PARCEL NO.:

366-040-39 & 41; 366-050-24 & 28

REFERENCE DRAWINGS:

- MAP NO. 1703 • PM NO. 1703
- MAP NO. 16166 • MISC. MAP 465
- DWG NO. 20746-B • DWG NO. 11844-D
- DWG NO. 39182-B

LEGEND:



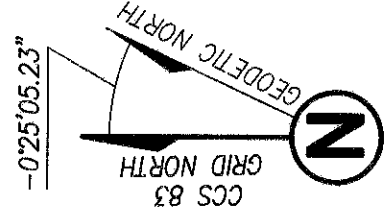
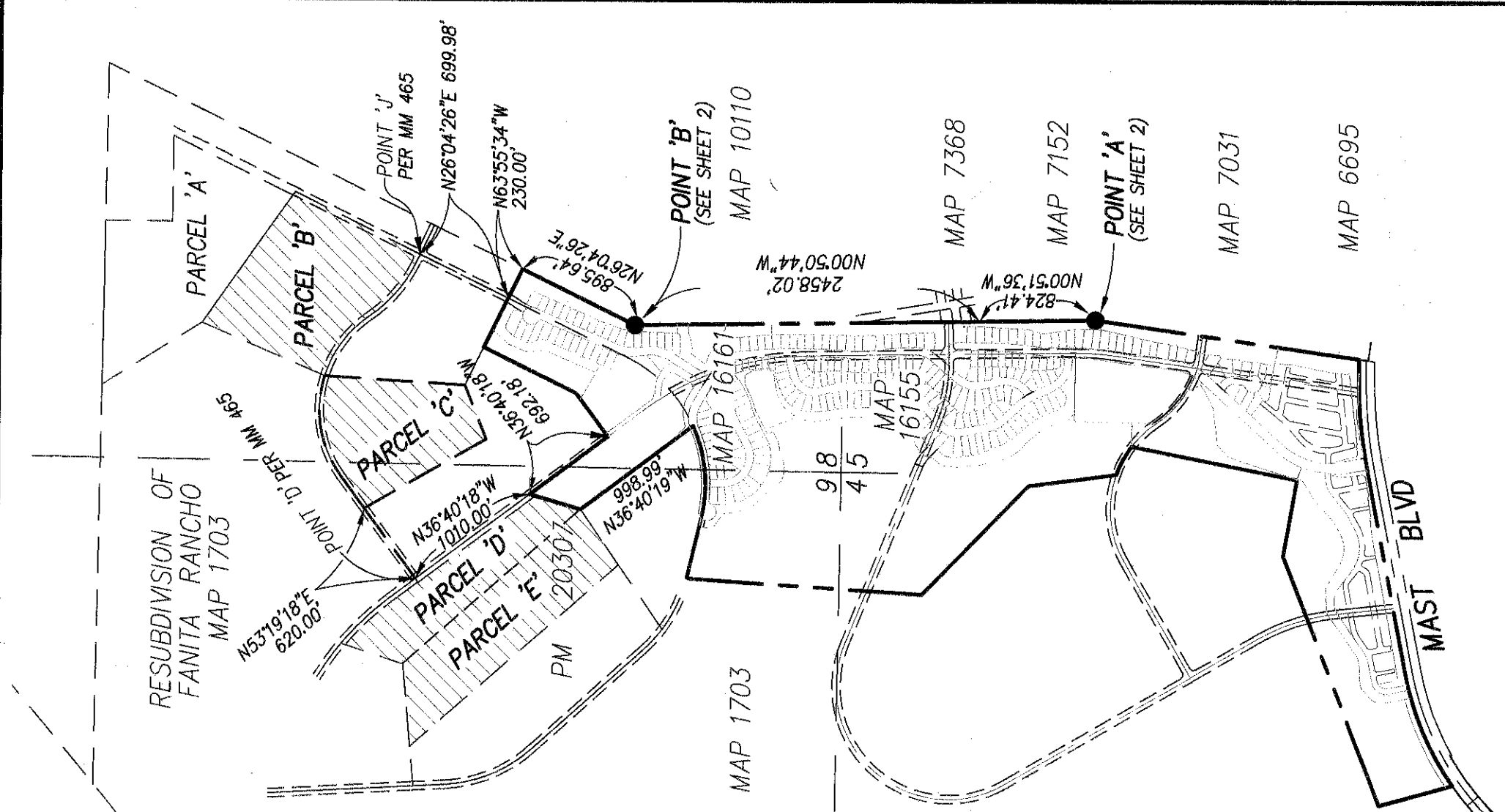
INDICATES COVENANT OF EASEMENT

- PARCEL A AREA = See B-sht-39020
- PARCEL B AREA = 24.357 ACRES
- PARCEL C AREA = 17.348 ACRES
- PARCEL D AREA = 13.800 ACRES
- PARCEL E AREA = 19.890 ACRES

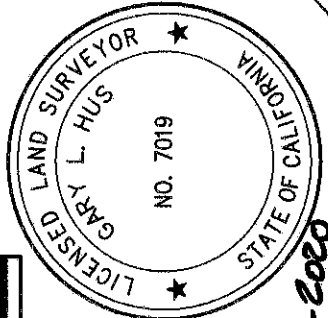
P.O.C. INDICATES POINT OF COMMENCEMENT

T.P.O.B. INDICATES TRUE POINT OF BEGINNING

● INDICATES FOUND MONUMENT AS NOTED



CONVERGENCE ANGLE AT POINT 'A'
ELEVATION = 411.93' (N.G.V.D. 29)
C.S.F. = 0.999974407



Gary L. Hus 03-09-2020
GARY L. HUS, L.S. 7019 DATE



PROJECT DESIGN CONSULTANTS

Planning | Landscape Architecture | Engineering | Surveying
701 B Street, Suite 800 San Diego, CA 92101
619.235.6471 Tel 619.234.0349 Fax

DOCUMENT NO.: 2020-0418725

RECORDED: AUGUST 4, 2020

GRANT DEED - OPEN SPACE IN FEE TITLE FOR MHPA PURPOSES

IN A PORTION OF LOT 8 AND 9, RESUBDIVISION OF FANITA RANCHO MAP NO. 1703 AND PARCEL 1 OF PARCEL MAP NO. 20307

DESCRIPTION	BY	APPRVD.	DATE	FILMED
ORIGINAL	PDC	FR	8/2/20	

STATUS

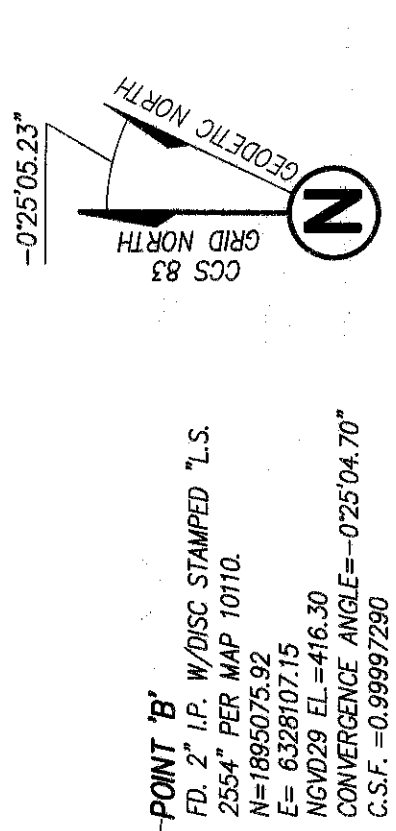
CITY OF SAN DIEGO, CALIFORNIA		P.T.S. NO. 653072
SHEET 1 OF 5 SHEETS		I.O. NO.
<i>Frank R. Fyfe</i>		1894-6323
FOR CITY LAND SURVEYOR DATE		CCS83 COORDINATES
		254-1763
		LAMBERT COORDINATES
		41691-1-B

BASIS OF BEARINGS:

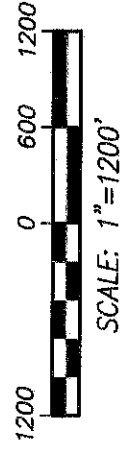
THE BASIS OF BEARINGS FOR THIS SURVEY IS THE CALIFORNIA COORDINATE SYSTEM OF 1983, ZONE 6, EPOCH 1991.35, MEASUREMENTS TO POINTS 'A' AND 'B' SHOWN HEREON. SAID POINTS WERE ESTABLISHED FROM G.P.S. STATIONS "BIG 1964" AND "GPS PT. 836" PER RECORD OF SURVEY NO. 14492.

GRID BEARING 'A' - 'B': NORTH 00°50'57" WEST

THE COMBINED SCALE FACTOR AT POINT 'A' IS 0.999974407. GRID DISTANCE = GROUND DISTANCE X COMBINED SCALE FACTOR. ELEVATION AT POINT 'A' IS 411.93 FT. (N.G.V.D. 29). QUOTED BEARINGS FROM REFERENCE DEEDS/MAPS MAY OR MAY NOT BE IN TERMS OF SAID SYSTEM.

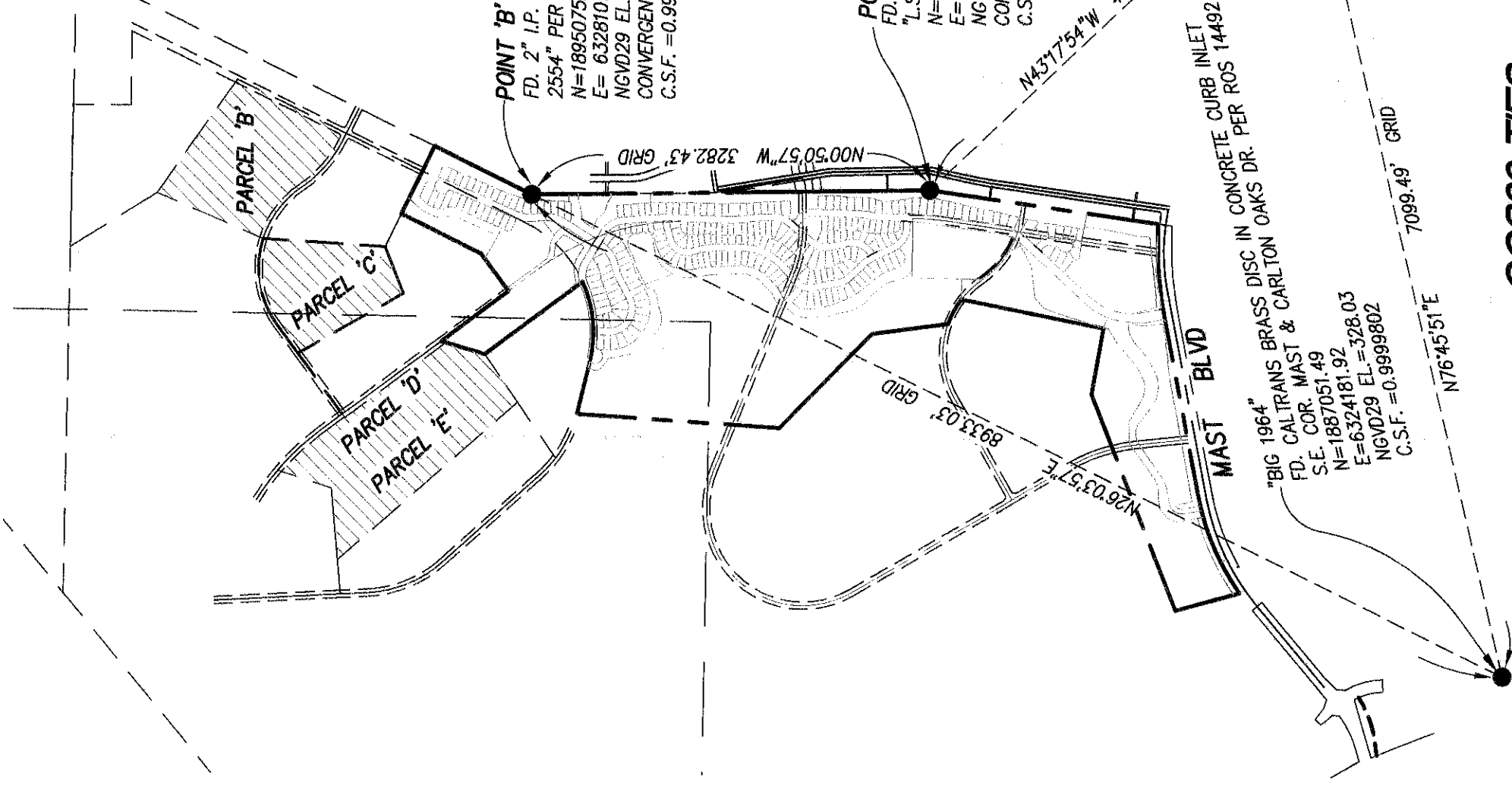


CONVERGENCE ANGLE AT POINT 'A'
ELEVATION = 411.93' (N.G.V.D. 29)
C.S.F. = 0.999974407



POINT 'A'
FD. LEAD & DISC IN CONC. STAMPED
"L.S. 2813" PER MAP 6695.
N=1891793.87
E= 6328155.79
NGVD29 EL.=411.93
CONVERGENCE ANGLE=-0°25'04.23"
C.S.F. =0.999974407

"GPS PT 836"
FD. LEAD & DISC IN CONCRETE WALK
STAMPED "L.S. 2801" PER ROS 14492
N=1888676.99
E=6331092.91
NGVD29 EL.=349.27
C.S.F. =0.999978512



CCS83 TIES



PROJECT DESIGN CONSULTANTS
Planning | Landscape Architecture | Engineering | Survey
701 B Street, Suite 800 San Diego, CA 92101
619.235.6471 Tel 619.234.0346 Fax

DOCUMENT NO.: 2020-0428725
RECORDED: AUGUST 4, 2020

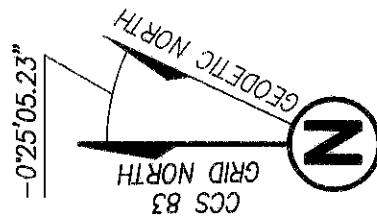
GRANT DEED - OPEN SPACE IN FEE TITLE FOR MHPA PURPOSES

IN A PORTION OF LOT 8 AND 9, RESUBDIVISION OF FANTIA RANCHO MAP NO. 1703 AND PARCEL 1 OF PARCEL MAP NO. 20307

DESCRIPTION	BY	APPRVD.	DATE	FILMED
ORIGINAL	PDC	Full	8/2/21	

CITY OF SAN DIEGO, CALIFORNIA
SHEET 2 OF 5 SHEETS
Timothy R. P. Pgs
FOR CITY LAND SURVEYOR DATE 3/11/2020

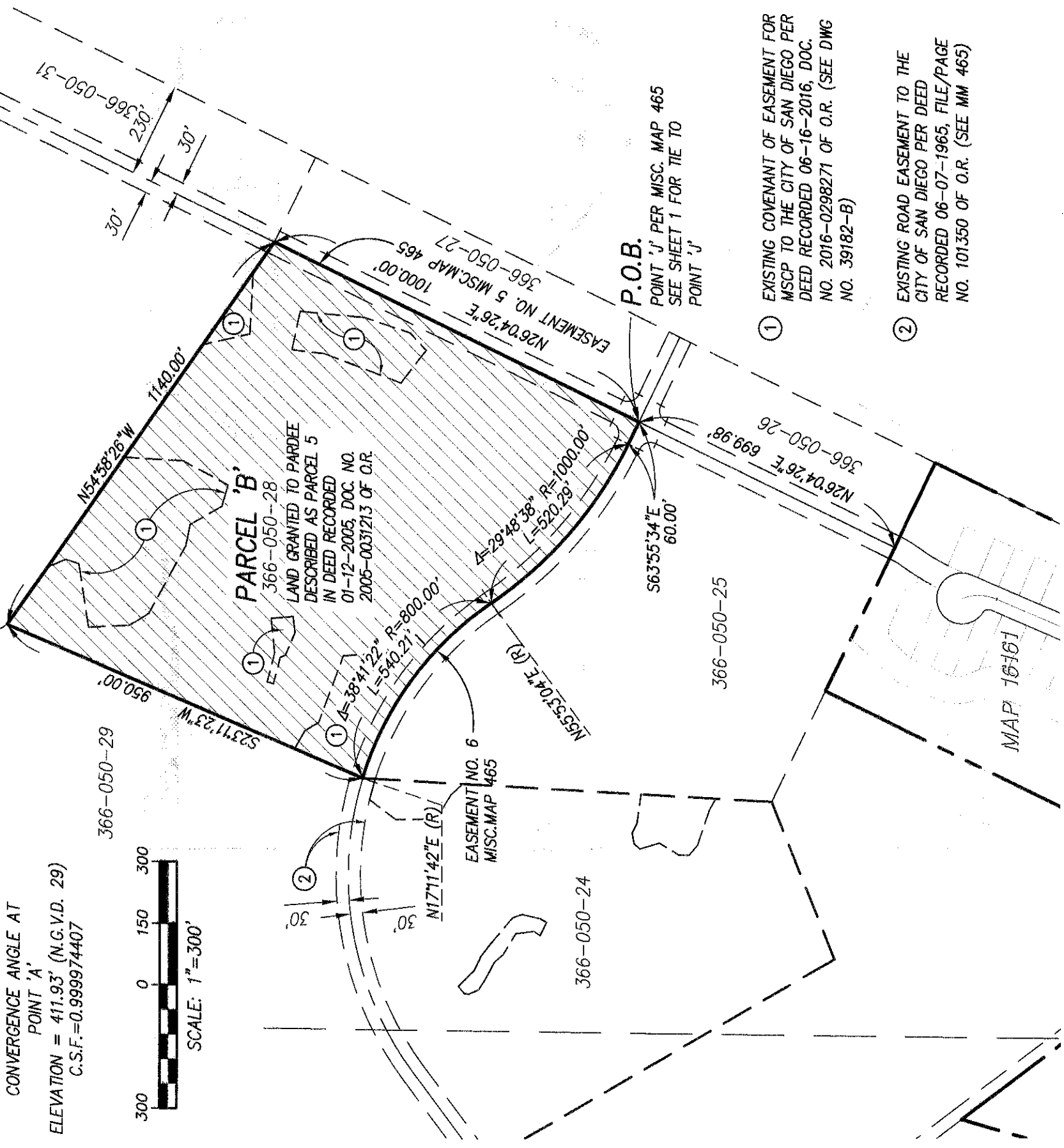
P.T.S. NO. 653072
I.O. NO. 1894-6323
CCS83 COORDINATES 254-1763
LAMBERT COORDINATES 41691-2-B



CONVERGENCE ANGLE AT POINT 'A'
 ELEVATION = 411.93' (N.G.V.D. 29)
 C.S.F. = 0.999974407



PORTION LOT 8 366-050-30
 MAP NO. 1703



- ① EXISTING COVENANT OF EASEMENT FOR MSCP TO THE CITY OF SAN DIEGO PER DEED RECORDED 06-16-2016, DOC. NO. 2016-0298271 OF O.R. (SEE DWG NO. 39182-B)
- ② EXISTING ROAD EASEMENT TO THE CITY OF SAN DIEGO PER DEED RECORDED 06-07-1965, FILE/PAGE NO. 101350 OF O.R. (SEE MM 465)

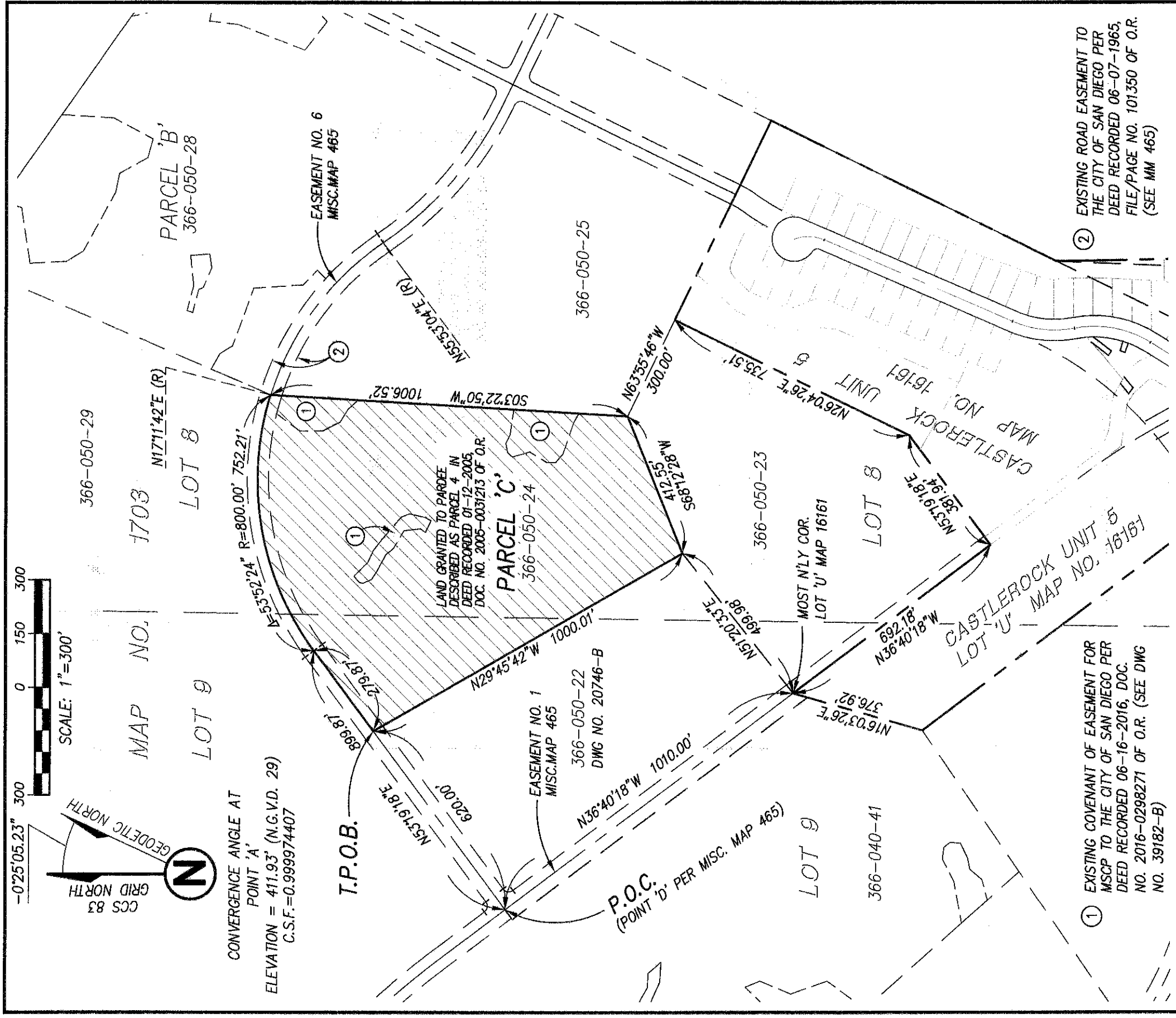


PROJECT DESIGN CONSULTANTS
 Planning | Landscape Architecture | Engineering | Survey
 701 B Street, Suite 800 San Diego, CA 92101
 619.235.6471 Tel 619.234.0349 Fax

GRANT DEED - OPEN SPACE IN FEE TITLE FOR MHPA PURPOSES
 IN A PORTION OF LOT 8 AND 9, RESUBDIVISION OF FANTA RANCHO MAP NO. 1703 AND PARCEL 1 OF PARCEL MAP NO. 20307

DESCRIPTION	BY	APPRVD.	DATE	FILMED
ORIGINAL	PDC	PRC	9/2/21	

CITY OF SAN DIEGO, CALIFORNIA		P.T.S. NO. 653072
SHEET 3 OF 5 SHEETS		I.O. NO.
<i>Amelia R. F. D.</i>		1894-6323
FOR CITY LAND SURVEYOR		CCS83 COORDINATES
		254-1763
		LAMBERT COORDINATES
		41691-3-B



① EXISTING COVENANT OF EASEMENT FOR MSCP TO THE CITY OF SAN DIEGO PER DEED RECORDED 06-16-2016, DOC. NO. 2016-0298271 OF O.R. (SEE DWG NO. 39182-B)

② EXISTING ROAD EASEMENT TO THE CITY OF SAN DIEGO PER DEED RECORDED 06-07-1965, FILE/PAGE NO. 101350 OF O.R. (SEE MM 465)



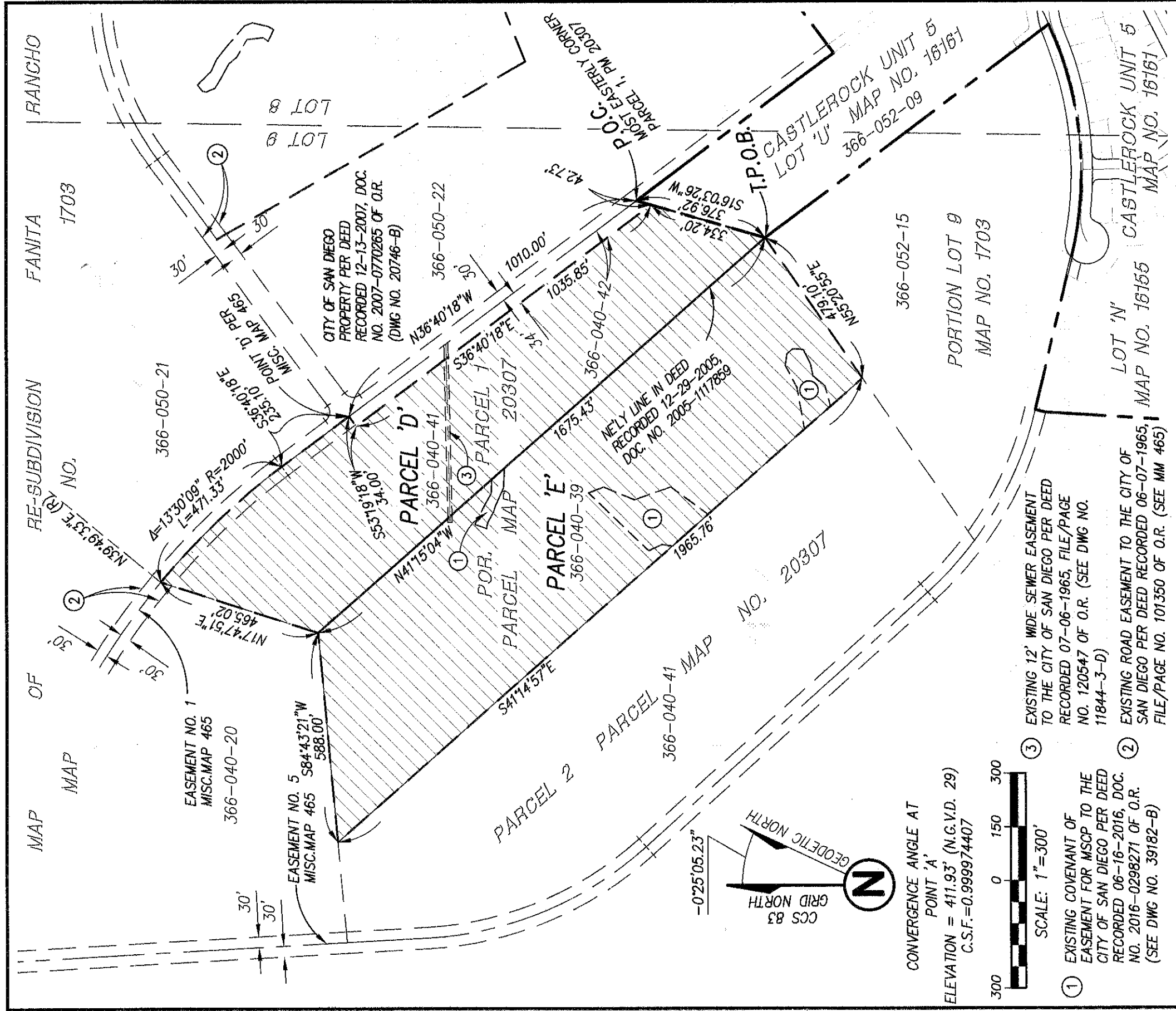
PROJECT DESIGN CONSULTANTS
 Planning | Landscape Architecture | Engineering | Survey
 701 B Street, Suite 800 San Diego, CA 92101
 619.235.6471 Tel 619.234.0349 Fax

GRANT DEED - OPEN SPACE IN FEE TITLE FOR MHPA PURPOSES
 IN A PORTION OF LOT 8 AND 9, RESUBDIVISION OF FANITA RANCHO MAP NO. 1703 AND PARCEL 1 OF PARCEL MAP NO. 20307

DESCRIPTION	BY	APPRVD.	DATE	FILMED
ORIGINAL	PDC	FWL	8/2/21	

CITY OF SAN DIEGO, CALIFORNIA
 SHEET 4 OF 5 SHEETS
Paul A. Fedy
 FOR CITY LAND SURVEYOR DATE 3/1/2020

P.T.S. NO. 653072
I.O. NO.
1894-6323
CCS83 COORDINATES
254-1763
LAMBERT COORDINATES
41691-4-B



PROJECT DESIGN CONSULTANTS
 Planning | Landscape Architecture | Engineering | Survey
 701 B Street, Suite 800 San Diego, CA 92101
 619.235.6471 Tel 619.234.0349 Fax

GRANT DEED - OPEN SPACE IN FEE TITLE FOR MHPA PURPOSES
 IN A PORTION OF LOT 8 AND 9, RESUBDIVISION OF FANITA RANCHO MAP NO. 1703 AND PARCEL 1 OF PARCEL MAP NO. 20307

DESCRIPTION	BY	APPRVD.	DATE	FILMED
ORIGINAL	PDC	FR	8/12/21	

CITY OF SAN DIEGO, CALIFORNIA		P.T.S. NO. 653072
SHEET 5 OF 5 SHEETS		I.O. NO.
FOR CITY LAND SURVEYOR		1894-6323
		CCS83 COORDINATES
		254-1763
		LAMBERT COORDINATES
		41691-5-B

Y. R. K. J.
 FOR CITY LAND SURVEYOR DATE 3/1/2020