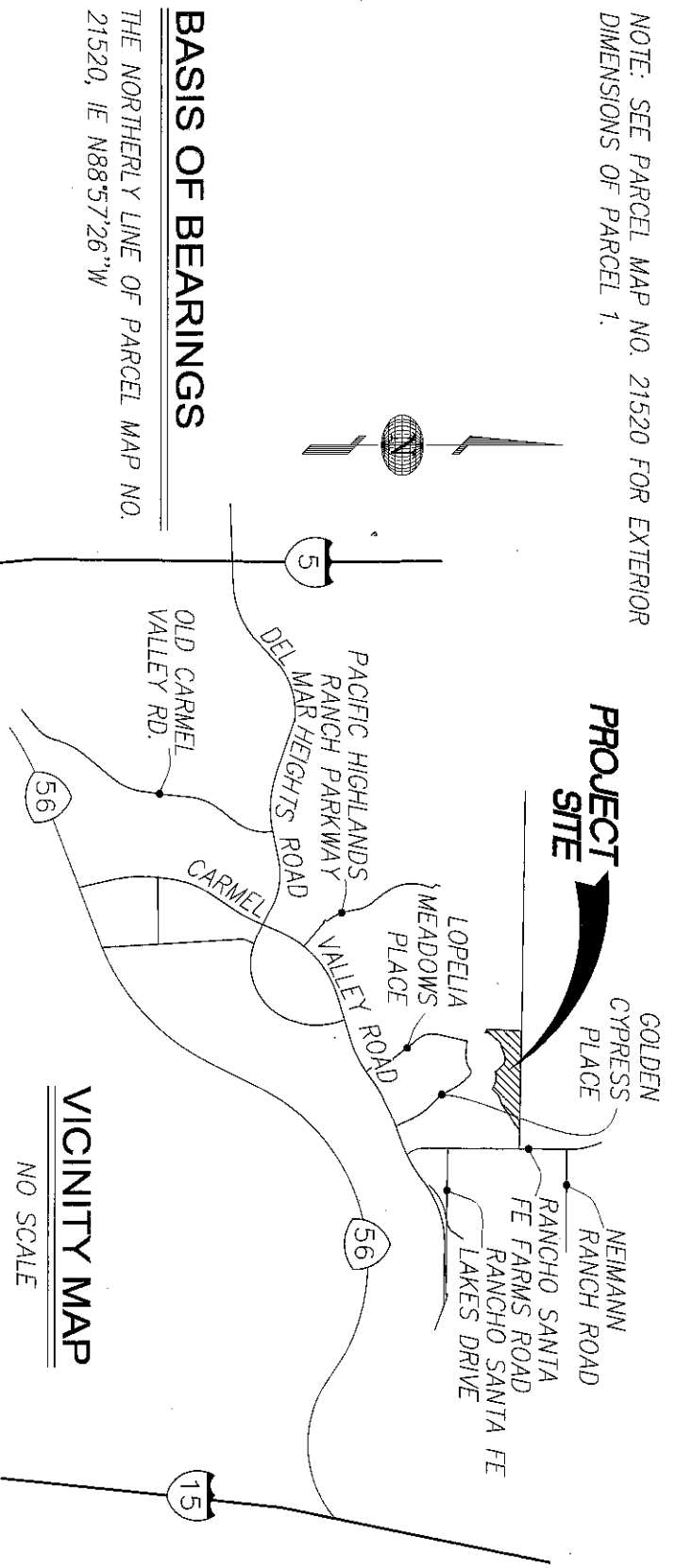


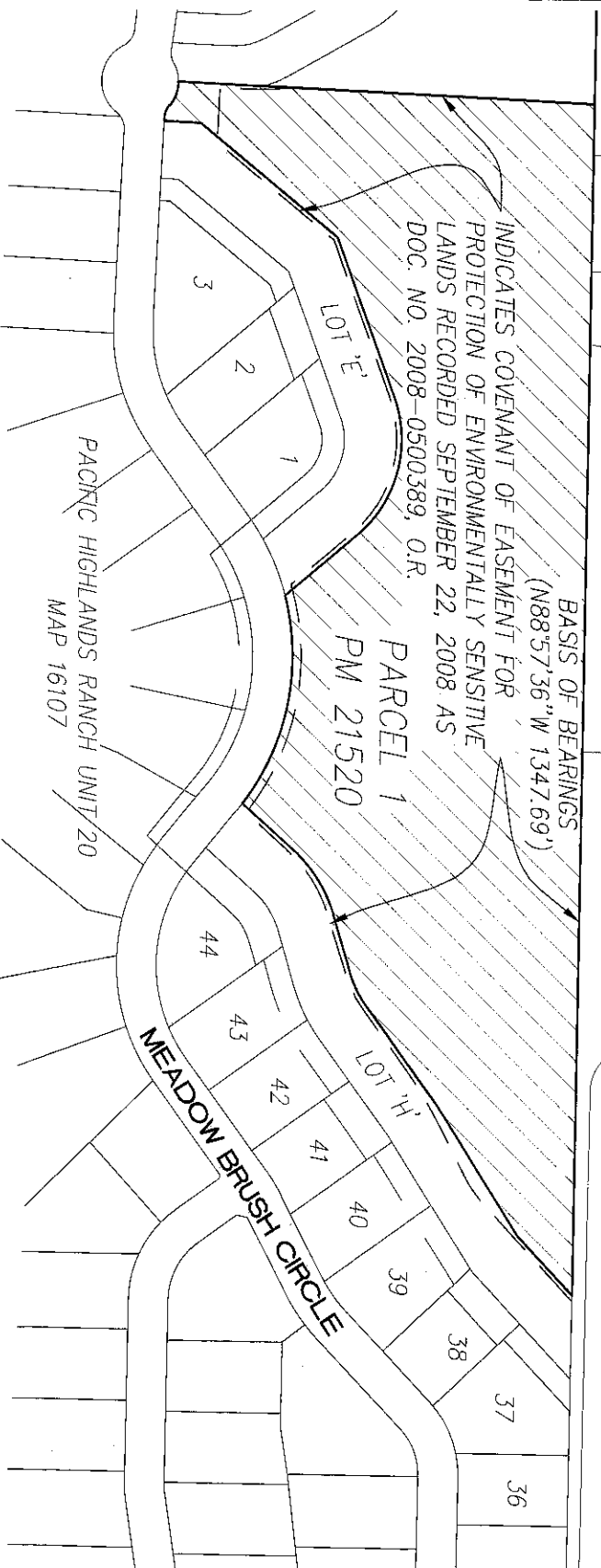
NOTE: SEE PARCEL MAP NO. 21520 FOR EXTERIOR DIMENSIONS OF PARCEL 1.



BASIS OF BEARINGS

THE NORTHERLY LINE OF PARCEL MAP NO. 21520, IE N88°57'26"W

COUNTY OF SAN DIEGO TRACT NO. 4657 MAP 12587
 COUNTY OF SAN DIEGO TRACT NO. 4018 MAP 10677
 MONTE FUEGO



INDICATES COVENANT OF EASEMENT FOR PROTECTION OF ENVIRONMENTALLY SENSITIVE LANDS RECORDED SEPTEMBER 22, 2008 AS DOC. NO. 2008-0500389, O.R.

BASIS OF BEARINGS (N88°57'36"W 1347.69')

ASSESSOR'S PARCEL NO.

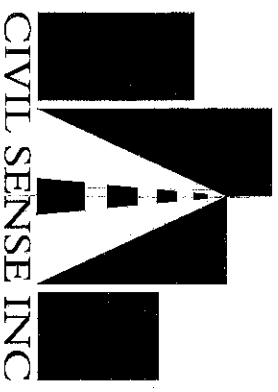
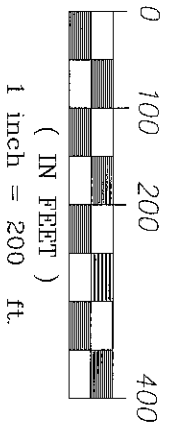
305-242-19

REFERENCE DRAWINGS

PM 21520, 38001-D

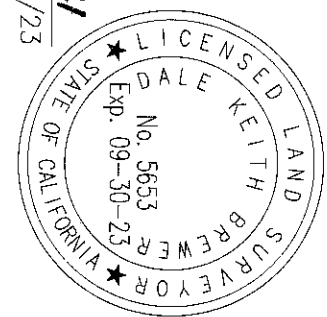
LEGEND

- (Hatched box) INDICATES MHPA OPEN SPACE IN FEE ACQUIRED. 8.124 ACRES
- () INDICATES RECORD DATA PER PM 21520



CIVIL SENSE, INCORPORATED
 13475 DANIELSON STREET, SUITE 150
 POWAY, CALIFORNIA 92064
 858-842-4353

DALE KEITH BREWER PLS 5653 DATE 11/02/2021 EXP. 9/30/23



DOCUMENT NO. 2021-0788 908
 RECORDED 11/15/2021

MSCP/MHPA OPEN SPACE IN FEE
ALL OF PARCEL 1 OF PARCEL MAP NO. 21520

DESCRIPTION	BY	APPROVED	DATE	FILMED	CITY OF SAN DIEGO, CALIFORNIA	PTS
ORIGINAL	CSI			11-23-21	SHEET 1 OF 1 SHEETS	653503 N/A
					FOR CITY LAND SURVEYOR	1934-6273
					DATE	NAD 83 COORDINATES
						294-1713
						LAMBERT COORDINATES

ACQUIRED

STATUS

41700-B