


**ASSESSOR'S PARCEL NO.**

305-312-69

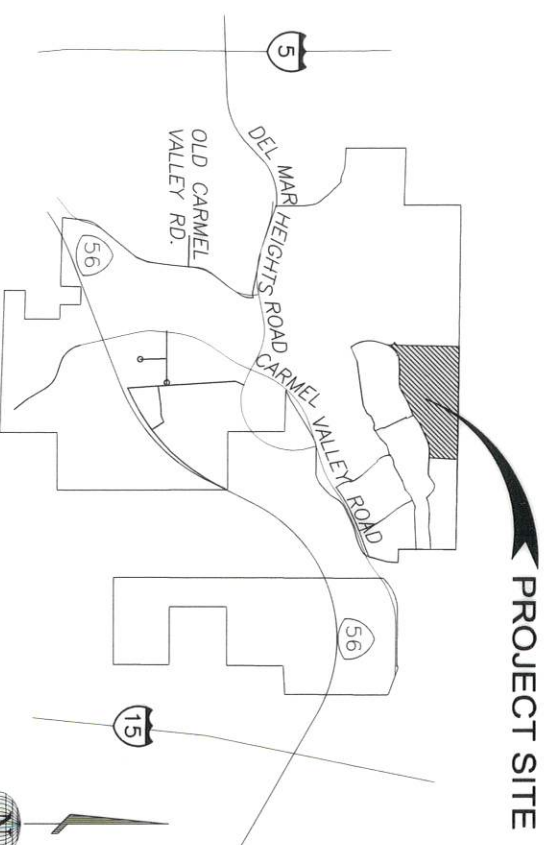
**REFERENCE DRAWINGS**

PM 21518, 38903-D

**LEGEND**

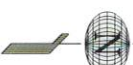
-  INDICATES MHPA OPEN SPACE IN FEE ACQUIRED. 34.228 ACRES
- ( ) INDICATES RECORD DATA PER PARCEL MAP NO. 21518.

NOTE: SEE PARCEL MAP NO. 21518 FOR THE EXTERIOR BOUNDARY DIMENSIONS OF PARCEL 1.



**VICINITY MAP**

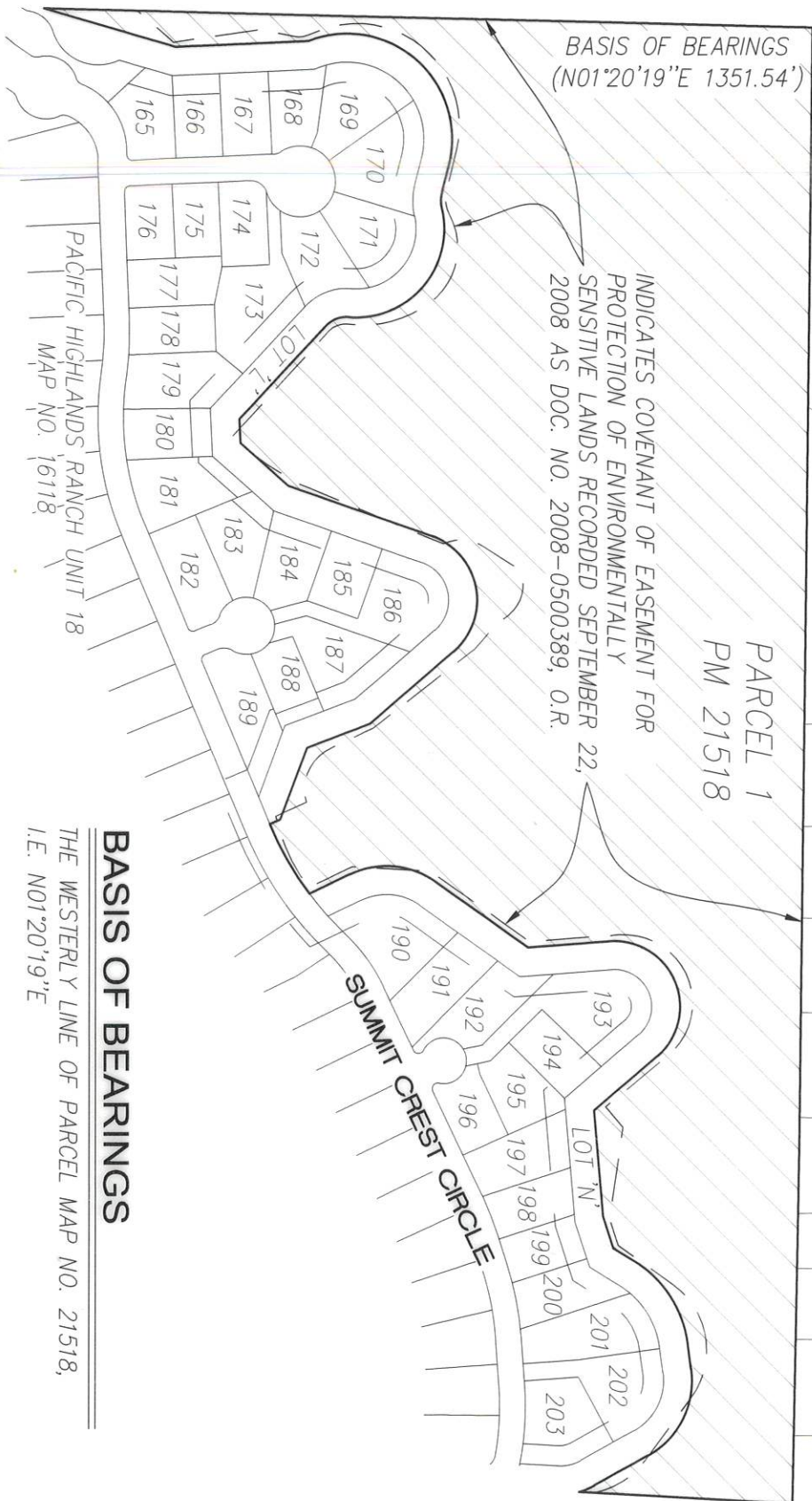
NO SCALE



COUNTY OF SAN DIEGO TRACT NO. 4657  
MAP 12587



PARCEL 1  
PM 21518

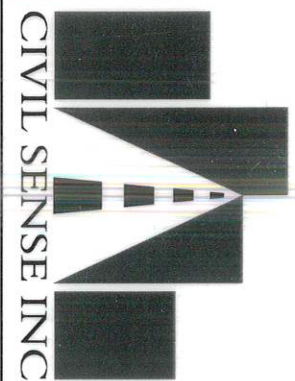
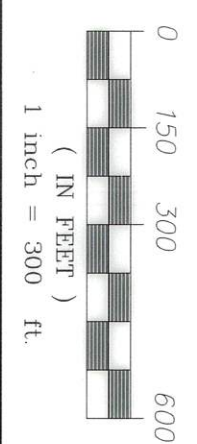
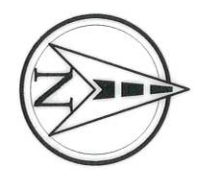


BASIS OF BEARINGS  
(N01°20'19"E 1351.54')

INDICATES COVENANT OF EASEMENT FOR PROTECTION OF ENVIRONMENTALLY SENSITIVE LANDS RECORDED SEPTEMBER 22, 2008 AS DOC. NO. 2008-0500389, O.R.

**BASIS OF BEARINGS**

THE WESTERLY LINE OF PARCEL MAP NO. 21518,  
I.E. N01°20'19"E

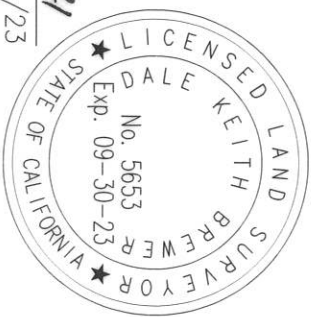


**CIVIL SENSE INC**

CIVIL SENSE, INCORPORATED  
13475 DANIELSON STREET, SUITE 150  
POWAY, CALIFORNIA 92064  
858-842-4353

*DKB*  
DALE KEITH BREWER

DATE 11/02/2021  
PLS 5653 EXP. 9/30/23



DOCUMENT NO. 2021-0801435  
RECORDED 11/22/21

**MSCP/MHPA OPEN SPACE IN FEE**  
**ALL OF PARCEL 1 OF PARCEL MAP NO. 21518**

DESCRIPTION	BY	APPROVED	DATE	FILMED	CITY OF SAN DIEGO, CALIFORNIA	PTS
ORIGINAL	CSI			<u>11-22-21</u>	SHEET 1 OF 1 SHEETS	653522 N/A
						1932-6269
						NAD 83 COORDINATES
						292-1709
						LAMBERT COORDINATES
						41702-B

*ACQU IRED*

STATUS