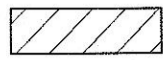


EXHIBIT "B"

LEGEND



INDICATES WATER EASEMENT, ACQUIRED 0.884 ACRES



INDICATES REC. OR CALCULATED DATA PER MAP NO. 14007

T.P.O.B

TRUE POINT OF BEGINNING

P.O.B

POINT OF BEGINNING

P.O.T

POINT OF TERMINUS

ASSESSOR'S PARCEL NO.

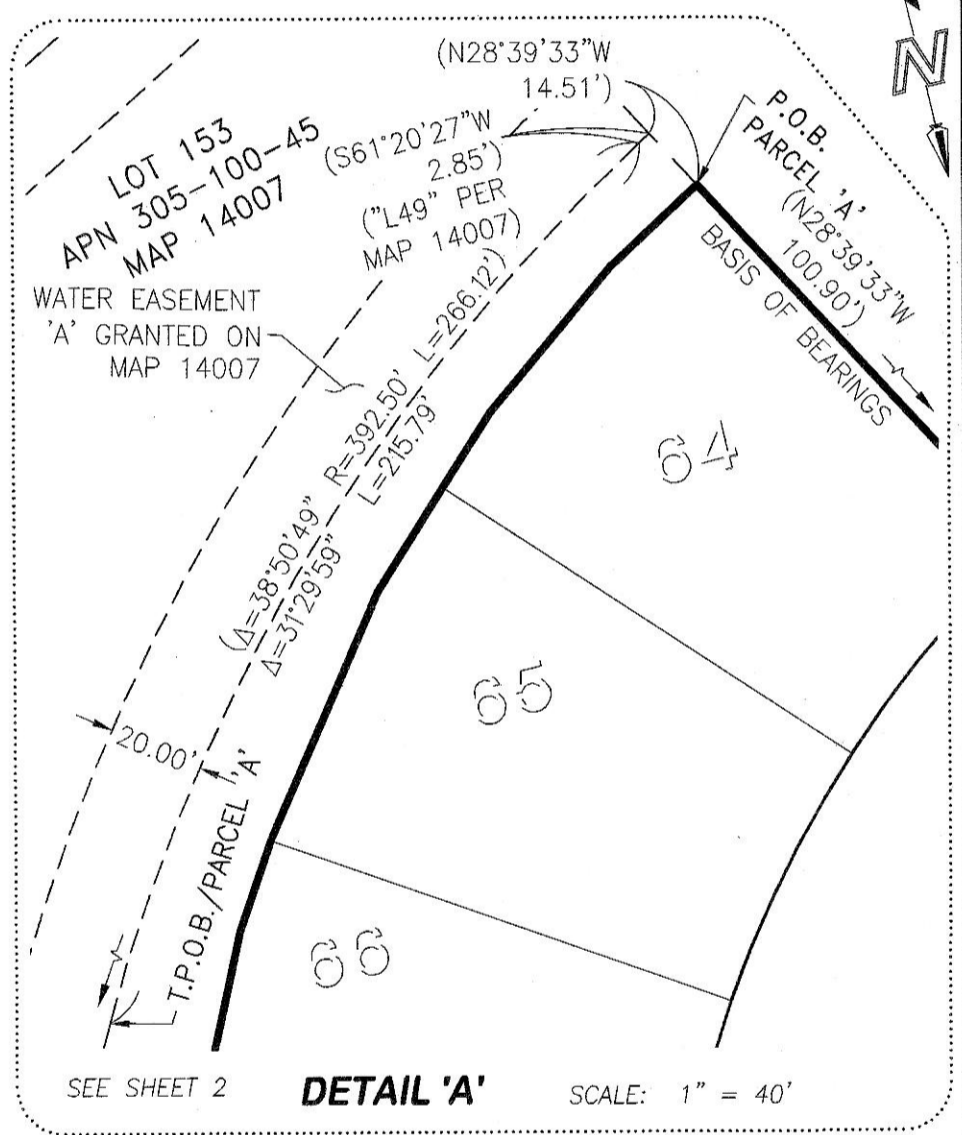
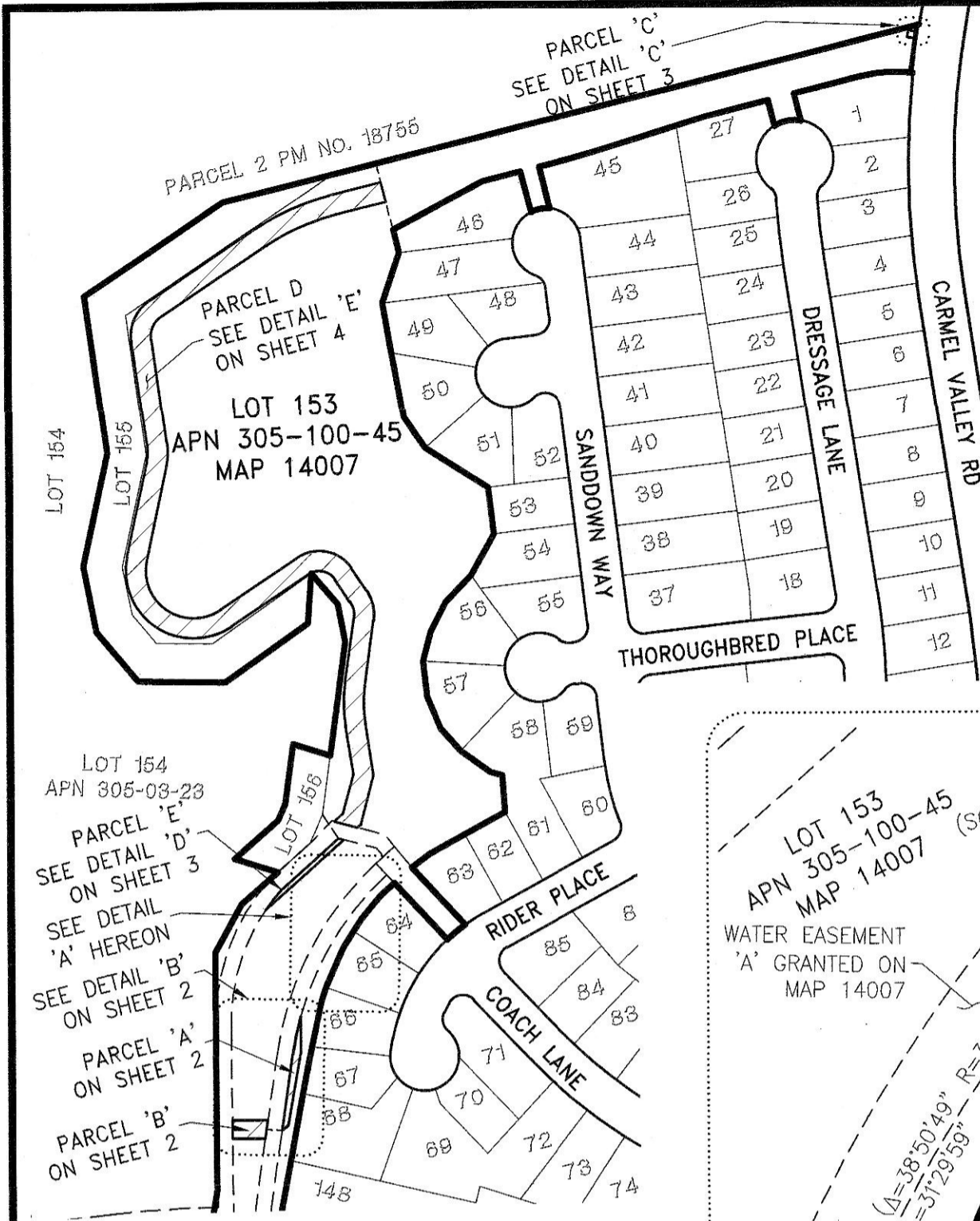
305-100-45

BASIS OF BEARINGS

THE NORTHEASTERLY LOT LINE OF LOT 64 OF MAP NO. 14007 IE N28°39'33"W



GRAPHIC SCALE SCALE: 1" = 200'



**SEE DWG 41714-D FOR WATER EASEMENT



FUSCOE

ENGINEERING
6390 Greenwich Drive, Suite 170 San Diego, California 92122
tel 858.564.1500 • fax 858.597.0335 • www.fuscoe.com

J. Marty Smith
J. MARTY SMITH, PLS 8070

08/25/2020
Date



DOCUMENT NO.: 1010-0796274
RECORDED: 12/11/2020

**PUBLIC WATER EASEMENT DEDICATION
WITHIN LOT 153 OF SEABREEZE FARMS, MAP NO. 14007**

DESCRIPTION	BY	APPROVED	DATE	FILMED
ORIGINAL	FEI			12-15-20

CITY OF SAN DIEGO, CALIFORNIA	
SHEET 1 OF 4 SHEET	
<i>Frank R. de Ay</i>	12/11/2020
FOR CITY LAND SURVEYOR/ENGINEER	DATE
DIVISION HEAD	
SECTION HEAD	

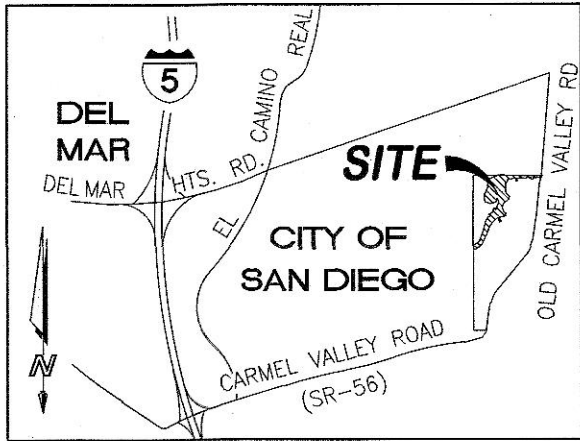
P.T.S. NO. 653559
1928-6267
NAD 83 COORDINATES
288-1707
LAMBERT COORDINATES
41717-1-B

ACQUIRED

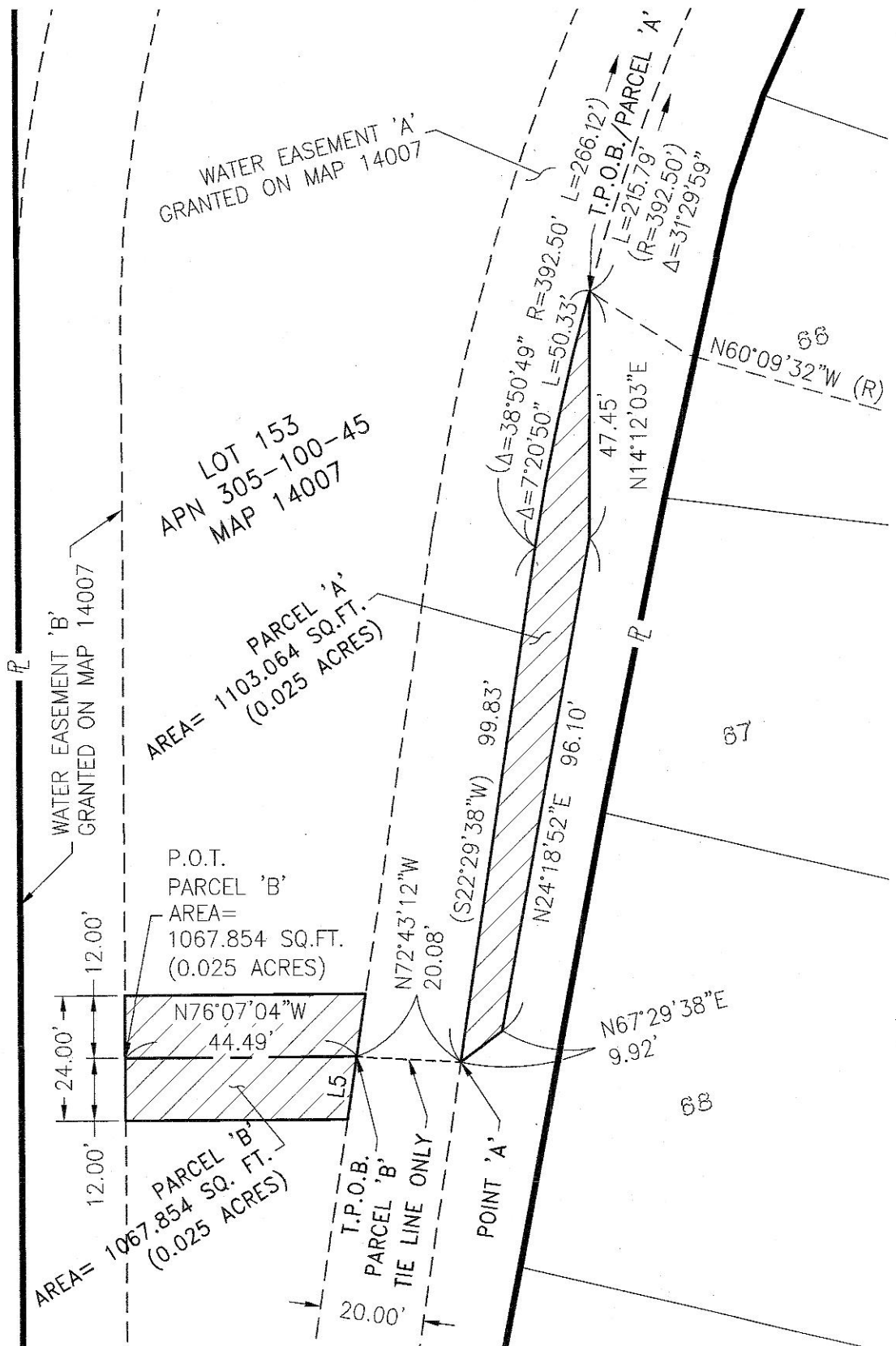
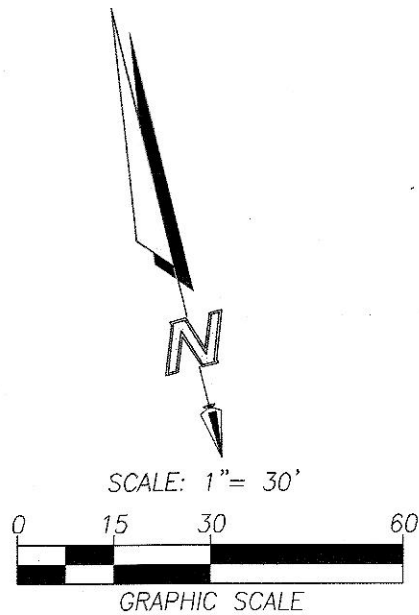
STATUS

EXHIBIT "B"

SEE DETAIL 'A' ON SHEET 1



VICINITY MAP



DETAIL 'B'

**SEE DWG 41714-D FOR WATER EASEMENT



FUSCOE

ENGINEERING

6390 Greenwich Drive, Suite 170, San Diego, California 92122
tel 858.554.1500 • fax 858.597.0335 • www.fuscoe.com

DOCUMENT NO.: 1020-0796274
RECORDED: 12/11/2020

**PUBLIC WATER EASEMENT DEDICATION
WITHIN LOT 153 OF SEABREEZE FARMS, MAP NO. 14007**

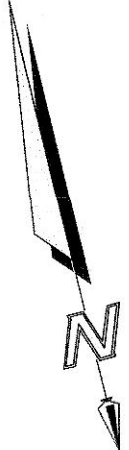
DESCRIPTION	BY	APPROVED	DATE	FILMED	CITY OF SAN DIEGO, CALIFORNIA	P.T.S. NO. 653559
ORIGINAL	FEI			12-15-20	SHEET 2 OF 4 SHEET	
					<i>Frank R. R. Ay</i> 12/11/2020 FOR CITY LAND SURVEYOR ENGINEER DATE	1928-6267 NAD 83 COORDINATES
					DIVISION HEAD	288-1707 LAMBERT COORDINATES
					SECTION HEAD	41717-2-B

ACQUIRED

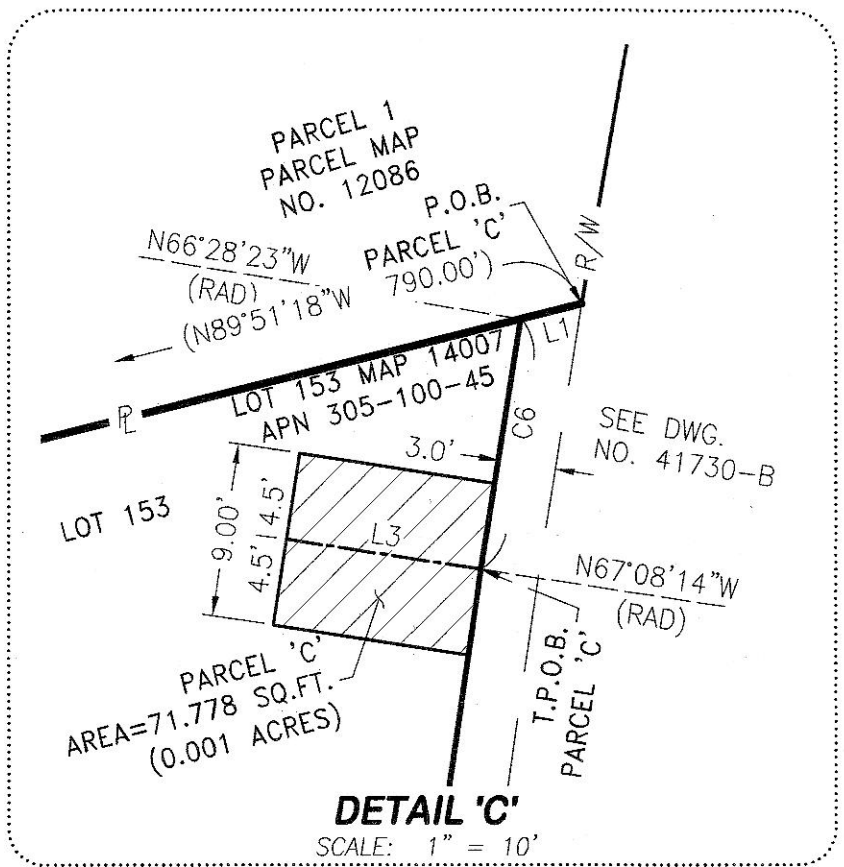
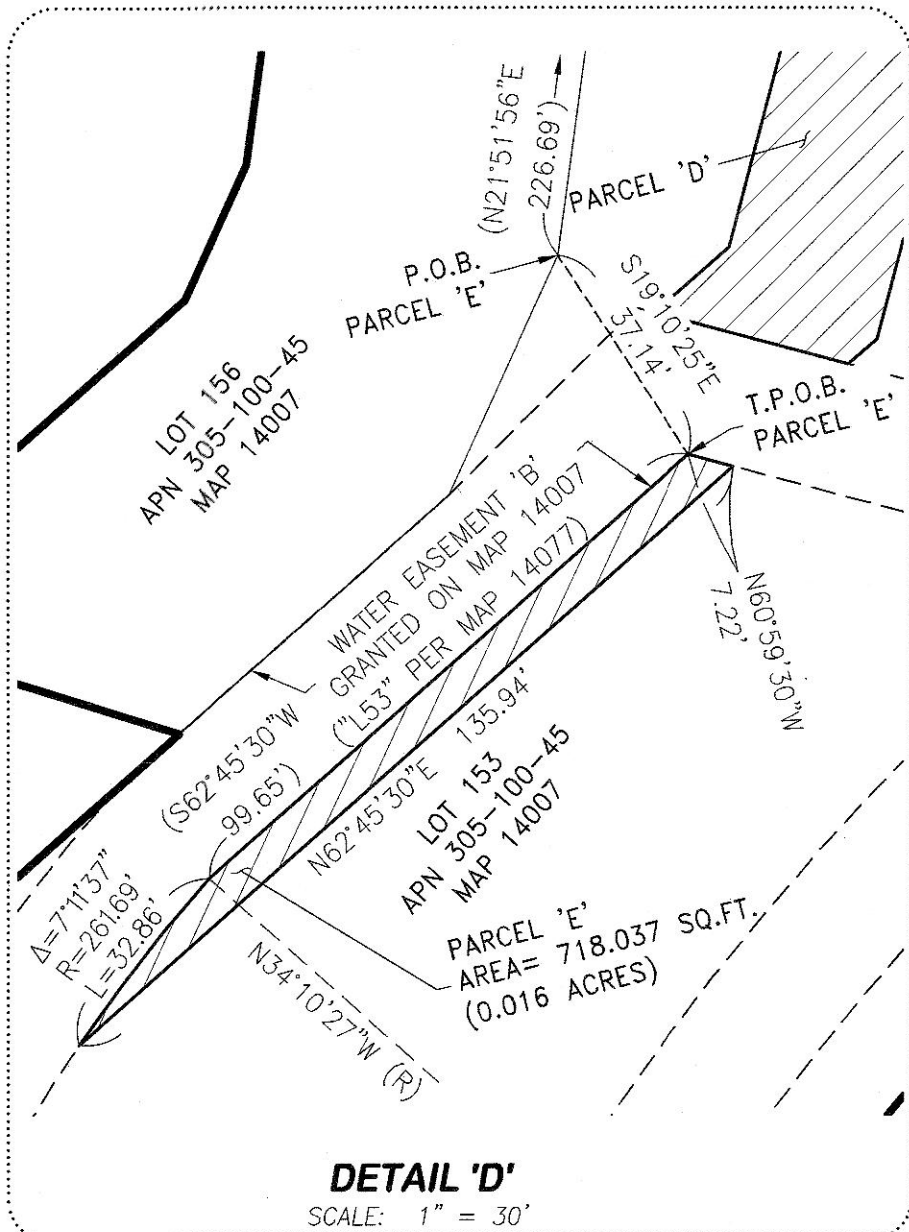
STATUS

EXHIBIT "B"

LINE TABLE		
LINE	BEARING	DISTANCE
L1	N89°51'18"W	3.27'
L3	N66°57'14"W	10.25'



CURVE TABLE			
CURVE	DELTA	RADIUS	LENGTH
C6	000°39'51"	1133.00'	13.13'



**SEE DWG 41714-D FOR WATER EASEMENT

FUSCOE
ENGINEERING
6390 Greenwich Drive, Suite 170, San Diego, California 92122
tel 858.554.1500 • fax 858.597.0335 • www.fuscoe.com

DOCUMENT NO.: 2020-0796274
RECORDED: 12/11/2020

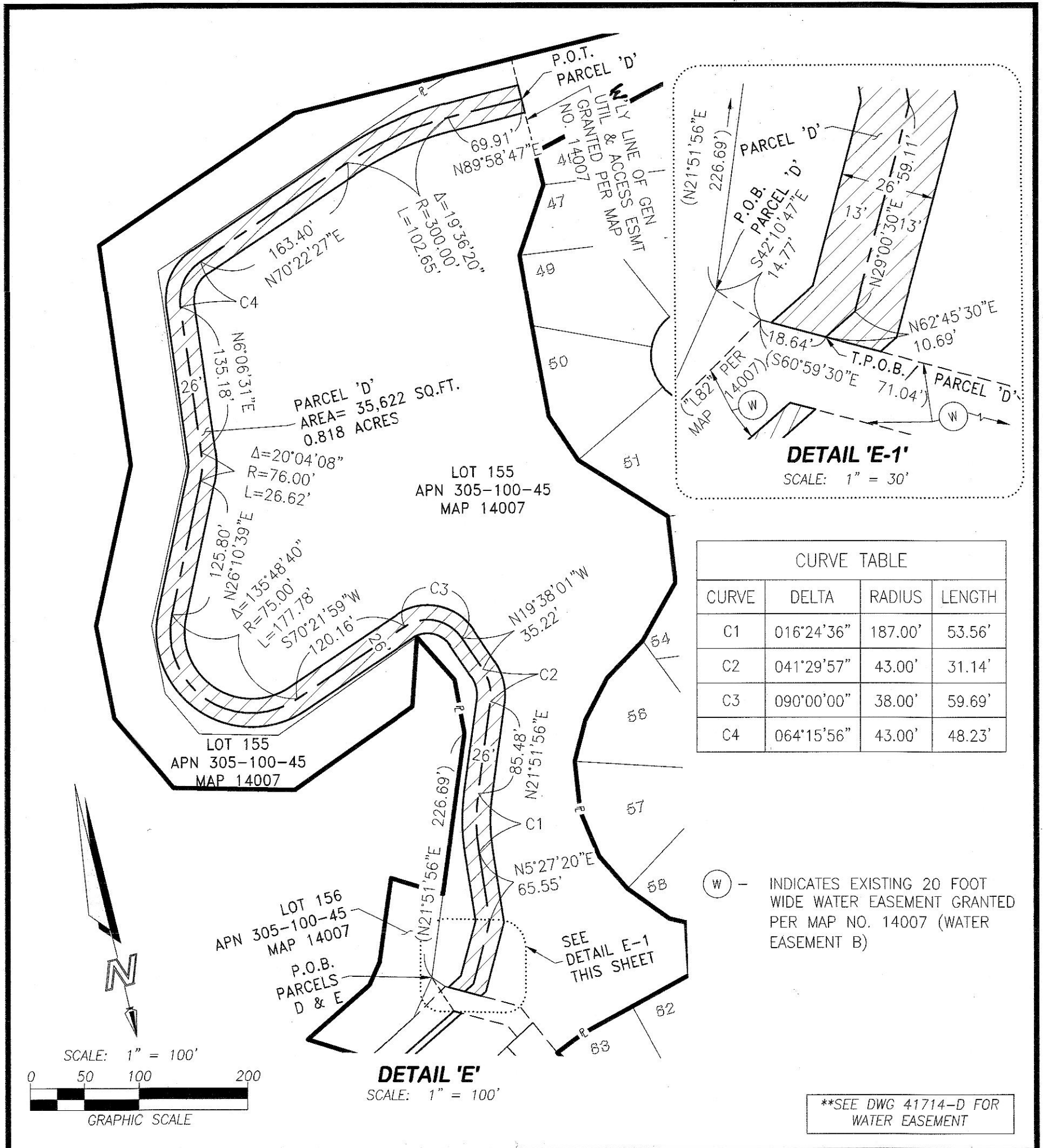
**PUBLIC WATER EASEMENT DEDICATION
WITHIN LOT 153 OF SEABREEZE FARMS, MAP NO. 14007**

DESCRIPTION	BY	APPROVED	DATE	FILMED	CITY OF SAN DIEGO, CALIFORNIA	P.T.S. NO. 653559
ORIGINAL	FEI			12-15-20	SHEET 3 OF 4 SHEET	
					<i>Frank R. Ray</i> 12/11/2020 FOR CITY LAND SURVEYOR ENGINEER DATE	1928-6267 NAD 83 COORDINATES
					DIVISION HEAD	288-1707 LAMBERT COORDINATES
					SECTION HEAD	41717-3-B

ACQUIRED

STATUS

EXHIBIT "B"



FUSCOE

ENGINEERING

6390 Greenwich Drive, Suite 170, San Diego, California 92122
tel 858.554.1500 • fax 858.597.0335 • www.fuscoe.com

DOCUMENT NO.: 2020-0796274
RECORDED: 12/11/2020

**PUBLIC WATER EASEMENT DEDICATION
WITHIN LOT 153 OF SEABREEZE FARMS, MAP NO. 14007**

DESCRIPTION	BY	APPROVED	DATE	FILMED	CITY OF SAN DIEGO, CALIFORNIA	P.T.S. NO. 653559
ORIGINAL	FEI			12-15-20	SHEET 4 OF 4 SHEET	
					<i>Amber R. R. B.</i> 12/11/2020 FOR CITY LAND SURVEYOR/ENGINEER DATE	1928-6267 NAD 83 COORDINATES
					DIVISION HEAD	288-1707 LAMBERT COORDINATES
					SECTION HEAD	41717-4-B

ACQUIRED

STATUS