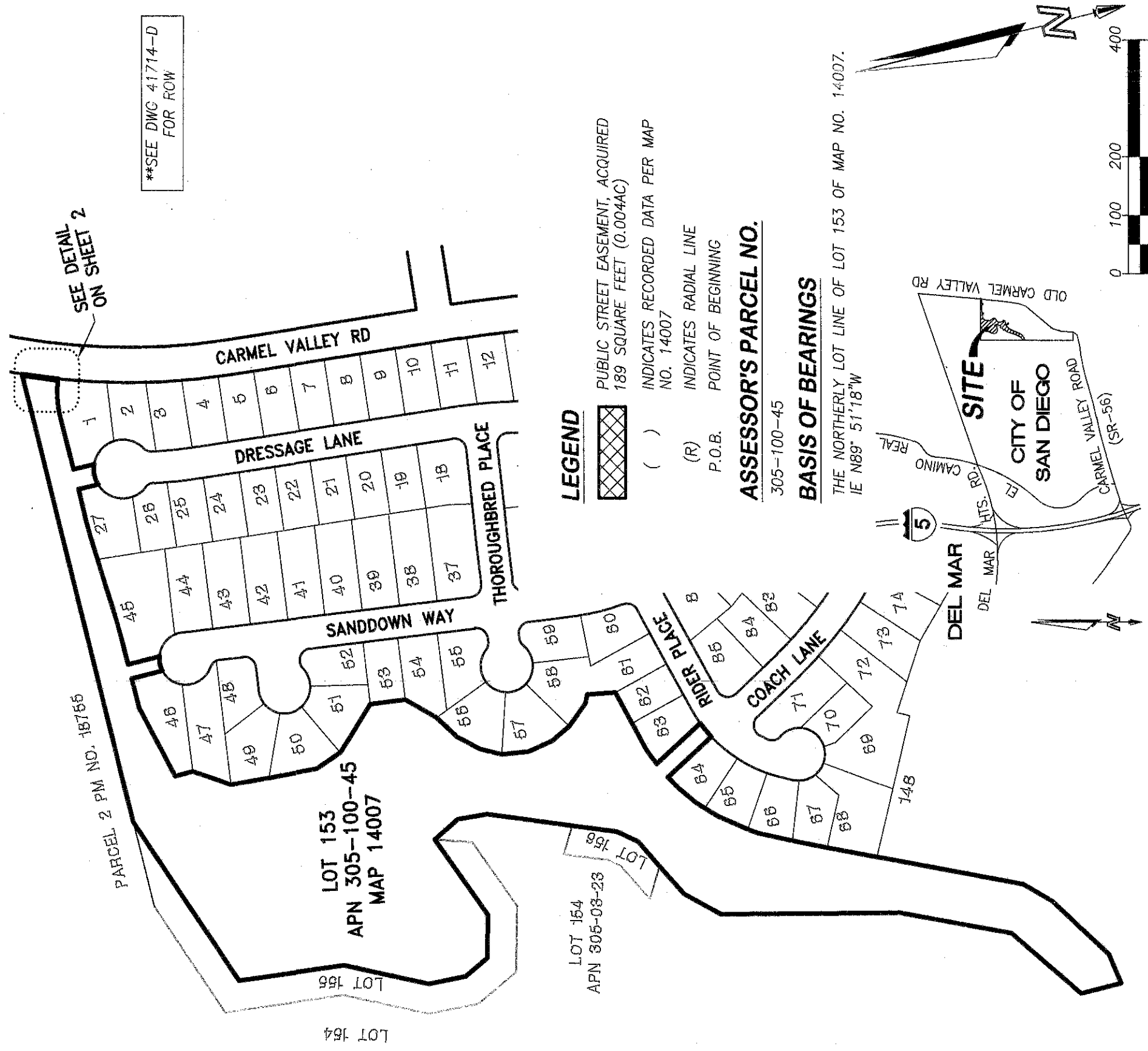


**EXHIBIT "B"**



\*\*SEE DWG 41714-D FOR ROW

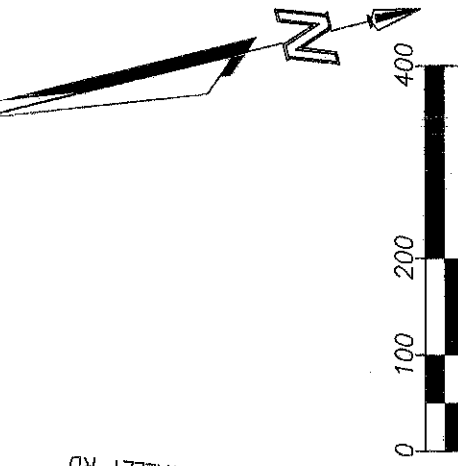
SEE DETAIL ON SHEET 2

**LEGEND**  
 PUBLIC STREET EASEMENT, ACQUIRED 189 SQUARE FEET (0.004AC)  
 ( ) INDICATES RECORDED DATA PER MAP NO. 14007  
 (R) INDICATES RADIAL LINE  
 P.O.B. POINT OF BEGINNING

**ASSESSOR'S PARCEL NO.**  
 305-100-45

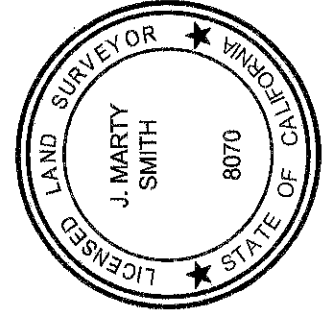
**BASIS OF BEARINGS**

THE NORTHERLY LOT LINE OF LOT 153 OF MAP NO. 14007.  
 IE N89° 51'18"W



**ENGINEERING**  
 6390 Greenwich Drive, Suite 170, San Diego, California 92122  
 tel 858.564.1500 fax 858.577.0335 o www.fuscoe.com

J. MARTY SMITH, PLS 8070  
 Date 08/25/2020



DOCUMENT NO.: 2020-08-25  
 RECORDED: 12/15/2020

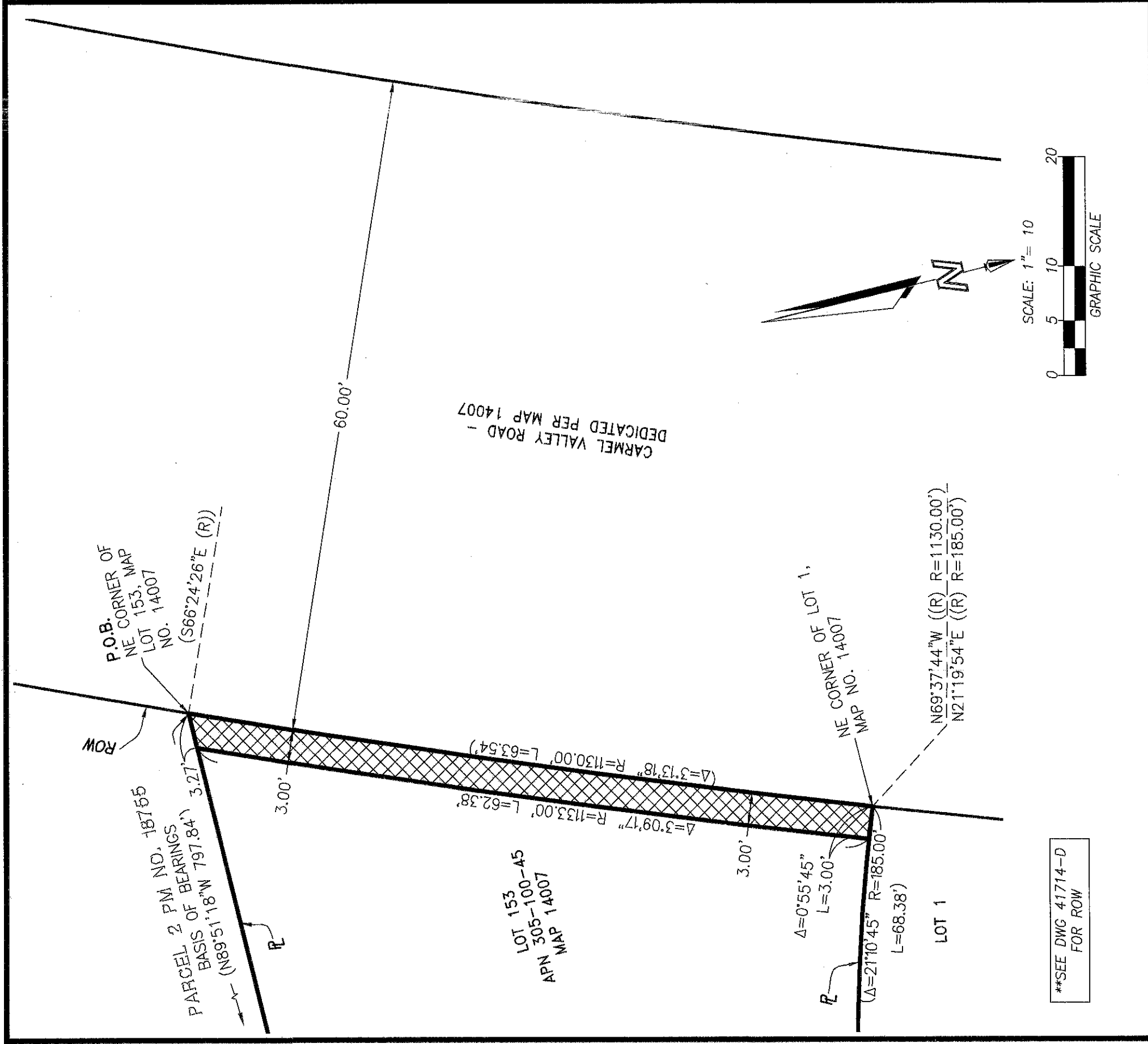
**RIGHT-OF-WAY DEDICATION - PORTION OF CARMEL VALLEY ROAD  
 WITHIN LOT 153 OF SEABREEZE FARMS, MAP NO. 14007**

DESCRIPTION	BY	APPROVED DATE	FILMED	STATUS
ORIGINAL	FEI		12-15-20	

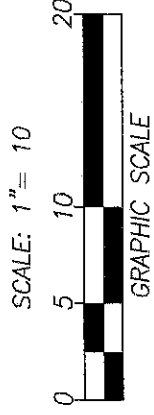
**ACQUIRED**

CITY OF SAN DIEGO, CALIFORNIA SHEET 1 OF 2 SHEET	P.T.S. NO.: 653559
<i>Paul R. Fei</i> FOR CITY LAND SURVEYOR/ENGINEER DATE 12/15/2020	1928-6267 NAD 83 COORDINATES
DIVISION HEAD	288-1707 LAMBERT COORDINATES
SECTION HEAD	<b>41730-1-B</b>

EXHIBIT "B"



\*\*SEE DWG 41714-D FOR ROW



**FUSCOE**

**E N G I N E E R I N G**

6390 Greenwich Drive, Suite 170, San Diego, California 92122  
tel 858.554.1500 • fax 858.597.0335 • www.fuscoe.com

DOCUMENT NO.: 2070-079 6236  
RECORDED: 12/11/20

**RIGHT-OF-WAY DEDICATION - PORTION OF CARMEL VALLEY ROAD  
WITHIN LOT 153 OF SEABREEZE FARMS, MAP NO. 14007**

DESCRIPTION	BY	APPROVED DATE	FILMED
ORIGINAL	FEI		12/15/20

**ACQUIRED**

STATUS

CITY OF SAN DIEGO, CALIFORNIA SHEET 2 OF 2 SHEET	P.T.S. NO. 653559
<i>Paul R. Fei</i> FOR CITY <del>LAND SURVEYOR</del> <b>ENGINEER</b> DATE <u>12/1/2020</u>	1928-6264 NAD 83 COORDINATES
DIVISION HEAD	288-1704 LAMBERT COORDINATES
SECTION HEAD	<b>41730-2-B</b>