


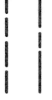




EXHIBIT "B"

LEGEND
 INDICATES DRAINAGE EASEMENT ACQUIRED HEREON

-  SUBDIVISION BOUNDARY
-  RIGHT-OF-WAY
-  LOT LINE
-  EASEMENT LINE
-  CENTERLINE
-  ABUTTERS RIGHTS RELINQUISHED

P.O.B. POINT OF BEGINNING

BASIS OF BEARINGS

EASTERLY LINE LOT 2, MAP NO. 16171
 I.E. N00°55'02"E

REFERENCE DWG NO'S

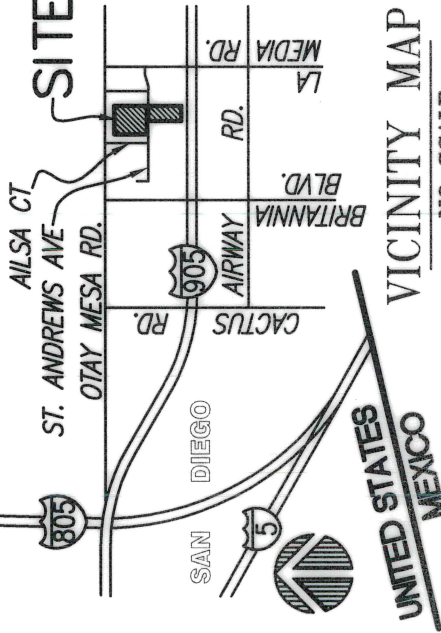
24448-D, 28063-D, 35304-D, 37834-D,
 38768-D, 40786-D, 41434-D
 MAP. NO. 16171
 PARCEL MAP NO. 21121

ASSESSOR'S PARCEL NO'S

646-280-15 AND 16

***ROAD DEDICATIONS**

OTAY MESA ROAD DEDICATED PER DOCUMENTS RECORDED:
 5/27/1983 DOC. NO. 83-179179 O.R.
 7/17/1997 DOC. NO. 97-0340349 O.R.
 7/01/2009 DOC. NO. 2009-0362212 O.R.



EASEMENTS

- ① EXISTING EASEMENT FOR FLOOD WATER STORAGE IN FAVOR OF THE CITY OF SAN DIEGO RECORDED APRIL 30, 2009 AS DOC. NO. 2009-0225890 OF OFFICIAL RECORDS.
- ② ACCESS EASEMENT PER MAP NO. 16171
- ③ EXISTING EASEMENT FOR FLOOD WATER STORAGE IN FAVOR OF THE CITY OF SAN DIEGO RECORDED FEBRUARY 01, 2019 AS DOC. NO. 2019-0038191 OF OFFICIAL RECORDS.
- ④ AVIGATION EASEMENT PER MAP NO. 16171
- ⑤ ABUTTERS RIGHTS RECORDED 10-15-2002 AS DOC. NO. 2002-0897213 OF OFFICIAL RECORDS.



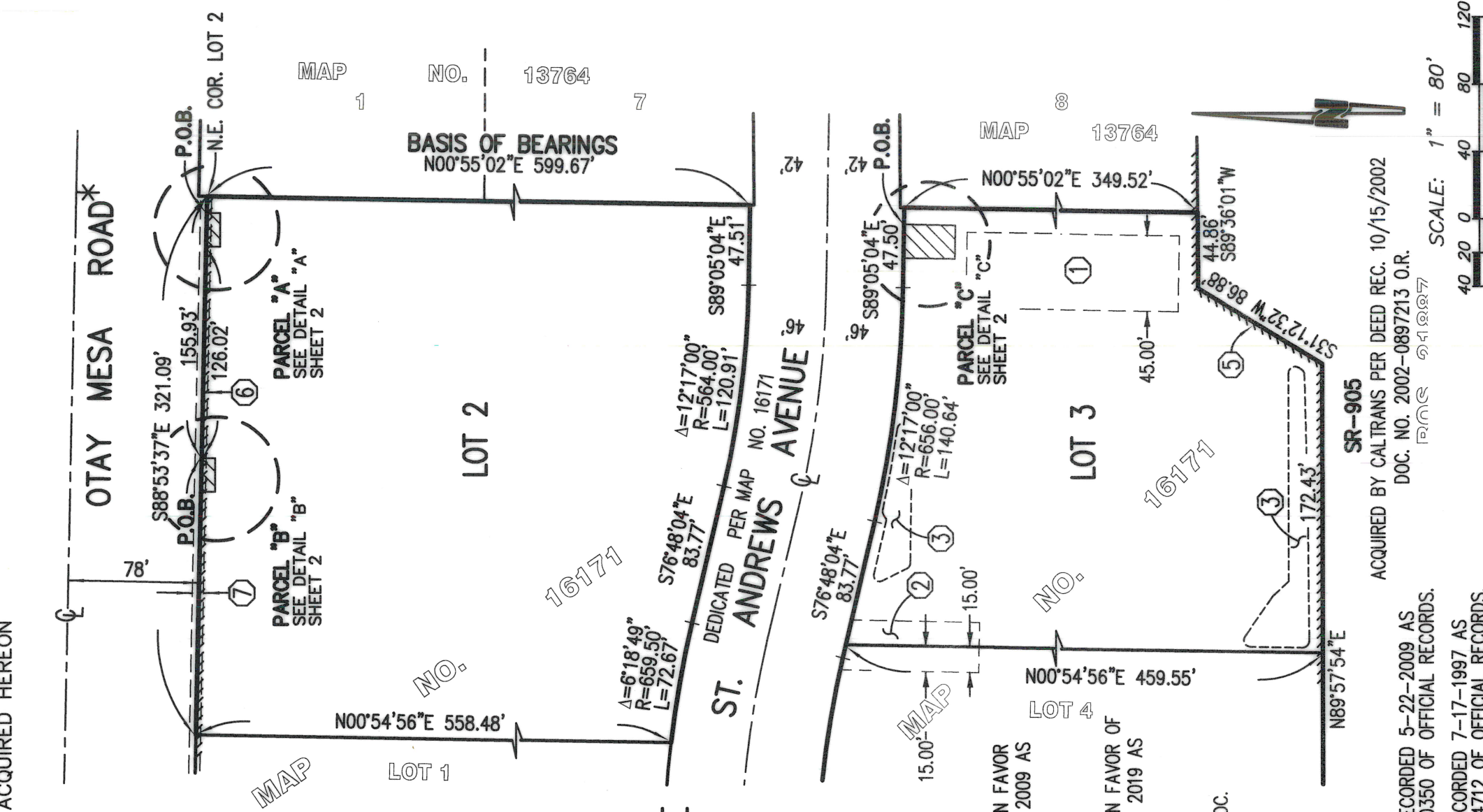
SPEAR & ASSOCIATES, INC

CIVIL ENGINEERING AND LAND SURVEYING
 475 PRODUCTION STREET, SAN MARCOS, CA. 92078
 PHONE (760) 736-2040 FAX (760) 714-0247

BY:  DATE: 5/10/2021

DOCUMENT NO. 2021-0380892

RECORDED MAP 19, 2021



DRAINAGE EASEMENTS IN LOTS 2 & 3 OF MAP NO. 16171

DESCRIPTION	BY	APPROVED	DATE	FILMED	STATUS
ORIGINAL	S&A		5/10/21		
ACQUIRED					

CITY OF SAN DIEGO, CALIFORNIA SHEET 1 OF 2 SHEETS		PTS #656526
FOR CITY LAND SURVEYOR ENGINEER		W.D. NO. N/A
DATE: 5/10/2021		NAD83 COORDINATES 1786-6337
DIVISION HEAD		LAMBERT COORDINATES 146-1777
SECTION HEAD		41764-1-B

