

EXHIBIT "B"

PROPERTY PER GRANT DEED
DATED JULY 21, 2017 AS
DOC # 2017-0328861

APN:
436-440-04

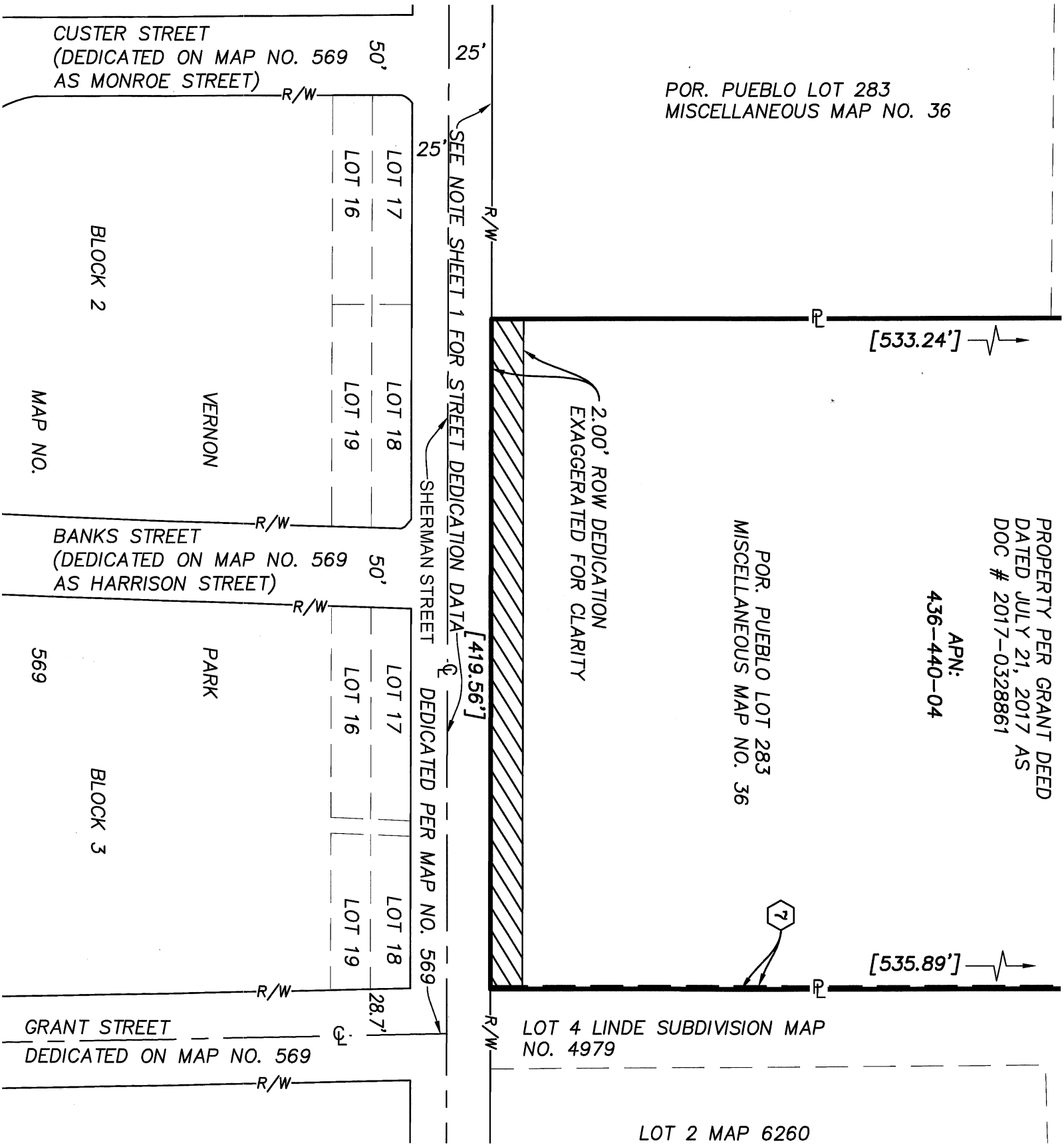
POR. PUEBLO LOT 283
MISCELLANEOUS MAP NO. 36

POR. PUEBLO LOT 283
MISCELLANEOUS MAP NO. 36

LOT 2 MAP 6260

LOT 4 LINDE SUBDIVISION MAP
NO. 4979

2.00' ROW DEDICATION
EXAGGERATED FOR CLARITY



EASEMENTS:
 7 AN EASEMENT IN FAVOR OF SAN DIEGO CONSOLIDATED GAS AND ELECTRIC COMPANY, FOR THE TRANSMISSION OF ELECTRIC CURRENT, RECORDED SEPTEMBER 8, 1942 IN BOOK 1388, PAGE 384 OF OFFICIAL RECORDS. PLOTTED HEREON. WIDTH NOT SPECIFIED.

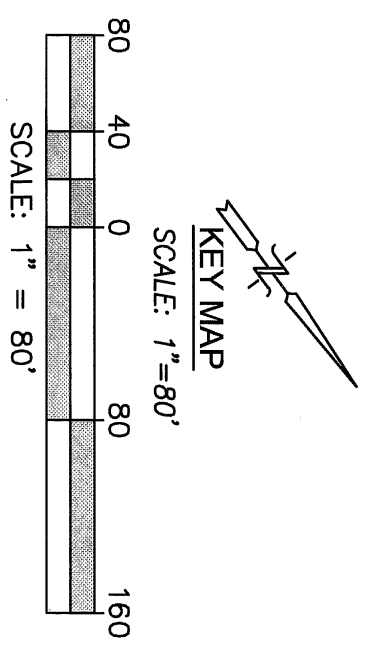


REC CONSULTANTS, INC.
2442 SECOND AVENUE
SAN DIEGO, CA 92101
(619)232-9200
(619)232-9210 FAX

Alan J. Ream ~ L.S. 7619 DATE **08-06-2020**



DOCUMENT NO. _____
RECORDED _____



PUBLIC STREET EASEMENT
OF A PORTION OF PUEBLO LOT 283 OF PUEBLO LANDS OF SAN DIEGO, MM 36

DESCRIPTION	BY	APPROVED	DATE	FILMED	CITY OF SAN DIEGO, CALIFORNIA	I.O. No.
ORIGINAL	R.E.C.				SHEET 2 OF 2 SHEETS	N/A
					FOR CITY LAND SURVEYOR <i>Alan J. Ream</i>	P.T.S. No. 656563
					DATE 8/13/2020	1858-6267
						NAD 83 COORDINATES
						218-1707
						LAMBERT COORDINATES
						41765-2-B
						STATUS