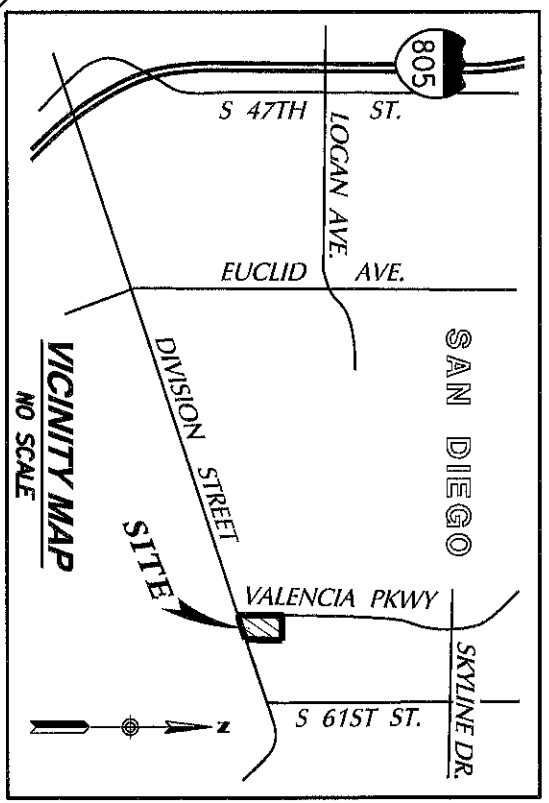


LEGEND

EXHIBIT "B"

- INDICATES STREET DEDICATION, ACQUIRED, PCL 'A' = 787±SQ. FT., PCL 'B' = 2249±SQ. FT.
- P.O.B. POINT OF BEGINNING**
- R1 RECORD DATA PER INST. REC'D 04-23-1963 AS DOC. 69530 (CITY DWG. 14861-4L)
- R2 RECORD DATA PER MAP 9018
- R3 RECORD DATA PER ROS 17441
- DD1 RECORD DATA PER DEED REC'D 12/27/2018 AS DOC. 2018-0530344, O.R.
- FD L&D IN SW "RCE 9416" PER ROS 14492 (STA 1187) N 1834688.26 E 6310306.93



BASIS OF BEARINGS

THE BASIS OF BEARINGS FOR THIS PLAT IS THE CALIF. COORDINATE SYSTEM, CCS83, ZONE 6, EPOCH 1991.35 AND IS DETERMINED BY G.P.S. MEASUREMENTS TAKEN ON JULY 16, 2019 AT POINTS 'A' & 'B' AS SHOWN HEREON. POINTS 'A' & 'B' WERE ESTABLISHED FROM G.P.S. STATION 179 AND G.P.S. STATION 1187 PER ROS 14492. THE BEARING FROM POINT 'A' TO POINT 'B' IS N 1°09'21"E.

QUOTED BEARINGS FROM REFERENCE MAPS/DEEDS MAY OR MAY NOT BE IN TERMS OF SAID SYSTEM.

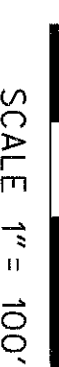
THE COMBINED GRID FACTOR AT POINT 'A' IS 1.000008329. GRID DISTANCE = GROUND DISTANCE X COMBINED GRID FACTOR.

ELEVATION AT POINT 'A' IS 276.36 NGVD29

REFERENCE DRAWINGS

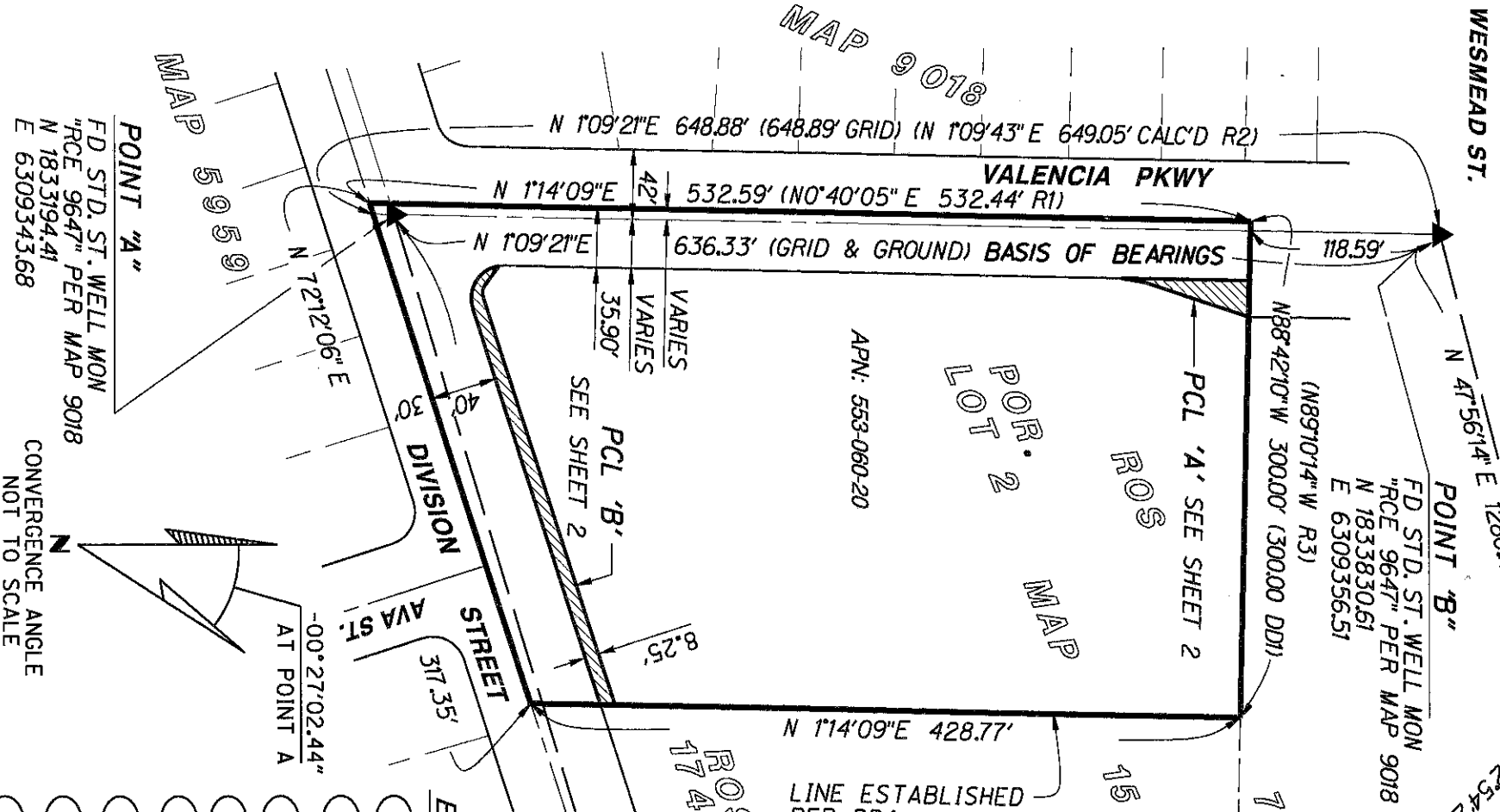
CITY DWG. 9491-B, 3193-B, 41795-D 14861-4L, 18025-B, GRADING & PI PER 41695-D AND 41795-D MAP 159, 5959, 7606, 9018 ROS 728, 17441

FD 2.5" DISK IN TC "GPS 0022 1992" PER ROS 14492 (STA 179) N 1834057.26 E 6315377.09



EASEMENT LEGEND

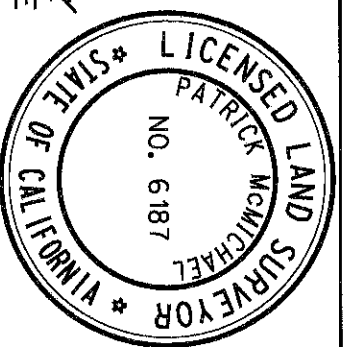
- 1 CITY PUBLIC STREET REC'D 07-12-1927 IN BK 1356, PG 219, O.R. (CITY DWG. 9491-B)
- 2 CITY PUBLIC ST. R/2 REC'D 02-27-1947 IN BK 2338, PG 311, O.R. (CITY DWG. 3193-B)
- 3 INTENTIONALLY OMITTED
- 4 INTENTIONALLY OMITTED
- 5 CITY 10' DRAINAGE ESMT. REC'D 04-23-1963 AS DOC. 69529, O.R. (CITY DWG. 14861-4L)
- 6 CITY PUBLIC STREET REC'D 04-23-1963 AS DOC. 69530, O.R. (CITY DWG. 14861-4L)
- 7 CENTERLINE OF 12' WIDE SDG&E EASEMENT REC'D 06-22-1970 AS DOC. 107925, O.R.
- 8 CITY PUBLIC STREET REC'D 3-9-2001 AS DOC. 2001-0137633, O.R. (CITY DWG. 18025-B)



RICK
ENGINEERING COMPANY

5620 FRIARS ROAD
SAN DIEGO, CA 92110
619-291-0707
(FAX) 619-291-4165

J. 18623-BM



PATRICK A. McMICHAEL, LS 6187 DATE 5-22-21

STREET DEDICATION

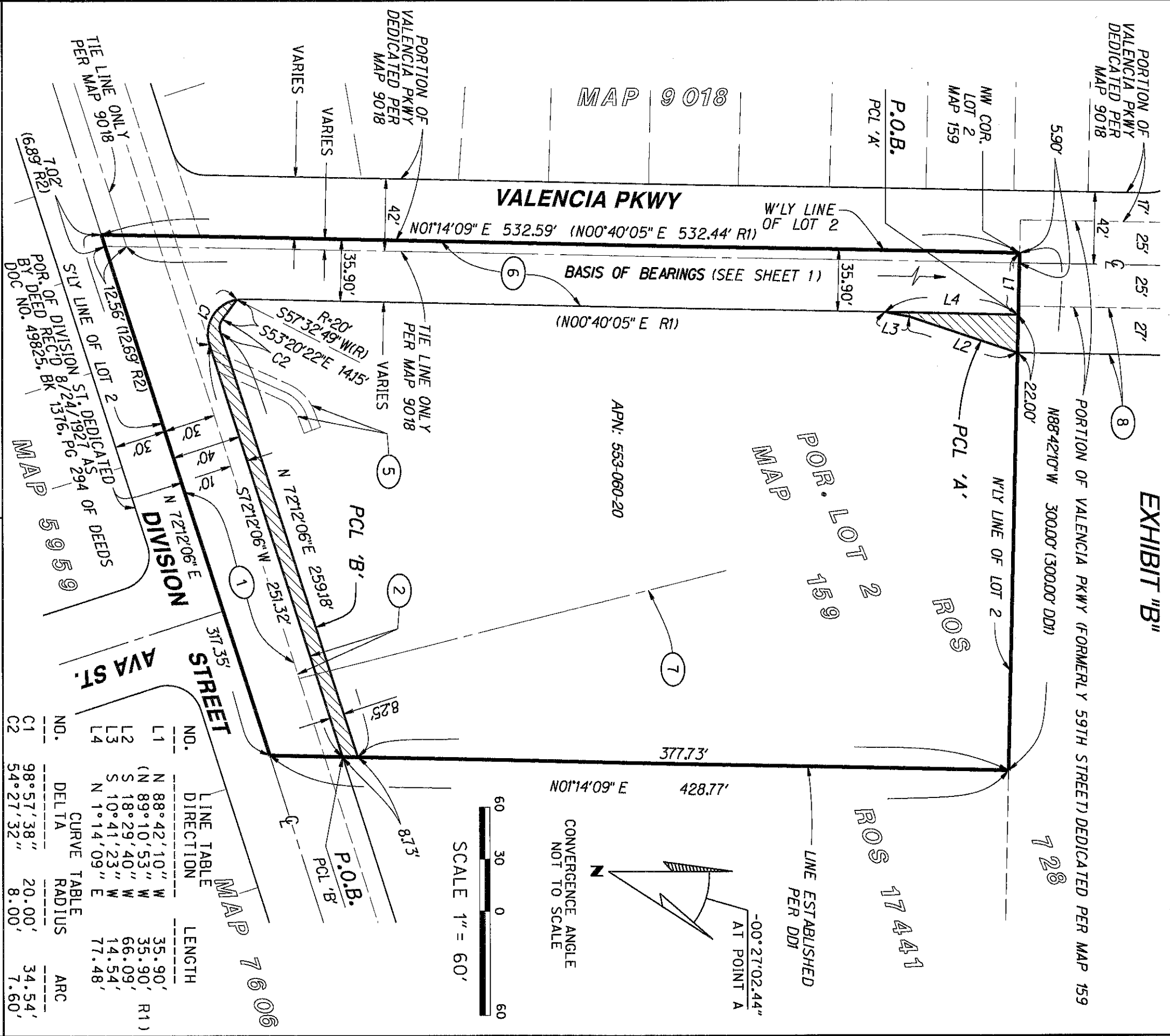
OVER PORTIONS OF LOT 2 OF MAP NO. 159

DESCRIPTION	BY	APPROVED	DATE	FILMED	CITY OF SAN DIEGO, CALIFORNIA	PTS
ORIGINAL	REC			7-19-21	SHEET 1 OF 2 SHEET	658422
					FOR CITY LAND SURVEYOR	I.O. N/A
					DATE	1832-6307
						CCS 83 COORDINATES
						192-1747
						NAD 27 COORDINATES
						41796 - 1 - B

ACQUIRED

STATUS

EXHIBIT "B"



STREET DEDICATION
 OVER PORTIONS OF LOT 2 OF MAP NO. 159

DESCRIPTION	BY	APPROVED	DATE	FILMED	CITY OF SAN DIEGO, CALIFORNIA	PTS
ORIGINAL	REC			7.19.21	SHEET 2 OF 2 SHEET	658422
					<i>FALLA, KJ</i>	1832-6307
					FOR CITY LAND SURVEYOR	CCS 83 COORDINATES
					DATE	192-1747
						NAD 27 COORDINATES
ACQUIRED					STATUS	41796-2-B