






EXHIBIT 'B'

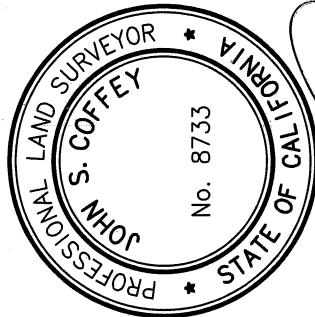
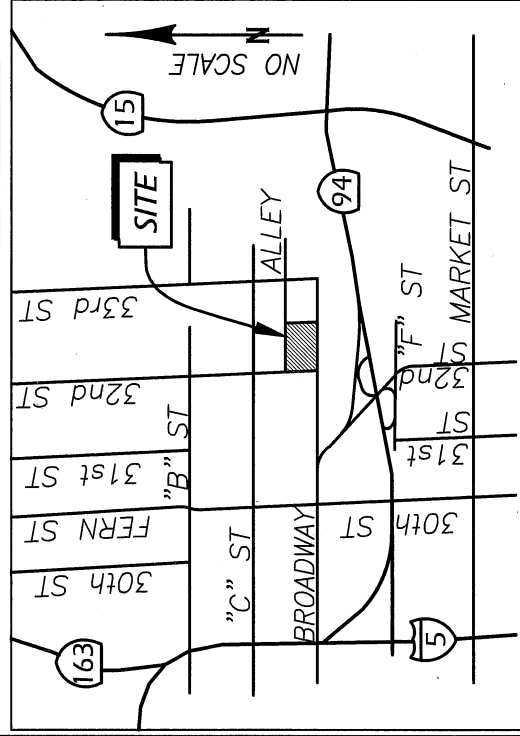
BASIS OF BEARINGS:

THE NORTHERLY RIGHT-OF-WAY LINE OF BROADWAY PER PARCEL MAP NO. 14855, I.E. N 89°56'30" W.

LEGEND

-  INDICATES PORTION OF BROADWAY VACATED HEREON, 20,348 SQ. FT. (0.47 AC) MORE OR LESS
-  PROPERTY LINE
-  RIGHT-OF-WAY LINE
-  CENTERLINE
-  LOT LINE
- () RECORD OR CALCULATED DATA PER PM 14885
- [] RECORD DATA PER CAL TRANS ROW MAP LO 37509
- { } RECORD DATA PER PM 11509

LINE/CURVE DATA TABLE	
ID	BEARING/DISTANCE/RADIUS/DELTA
L1	S 00°07'39" W, L=36.15'
L2	S 63°14'40" W, L=33.20'
L3	N 00°02'25" E, L=15.00'
L4	N 89°48'19" W, L=30.00'
L5	N 00°05'22" E, L=24.93'
C1	Δ=95°37'25", L=75.10, R=45.00'
L6	S 00°03'30" W, L=65.00'
L7	S 89°56'30" E, L=32.61'
(R1)	RADIAL= S 11°00'43" W
(R2)	RADIAL= S 84°36'42" E



REFERENCE DRAWINGS:
 PARCEL MAP 14885
 MAP 167
 ROW MAP LO 37509

[Signature]
 JOHN S. COFFEY LS 8733
 COFFEY ENGINEERING, INC.

RESOLUTION NO. 31355B
 ADOPTED MAY 25, 2021
 DOCUMENT NO. 2021-06S3058
 RECORDED SEPTEMBER 15, 2021

STREET VACATION OF A PORTION OF BROADWAY STREET BETWEEN 32ND STREET AND 33RD STREET

DESCRIPTION	BY	APPROVED	DATE	FILED	CITY OF SAN DIEGO, CALIFORNIA	P.T.S.#	637438
ORIGINAL	CE		11/11/20		SHEET 1 OF 3 SHEETS		
					<i>[Signature]</i>	1860-6269	
					FOR CITY LAND SURVEYOR	CCS 83	
					ENGINEER	220-1709	
						LAMBERT COORDINATES	
							41836-1-B

VACATED

STATUS

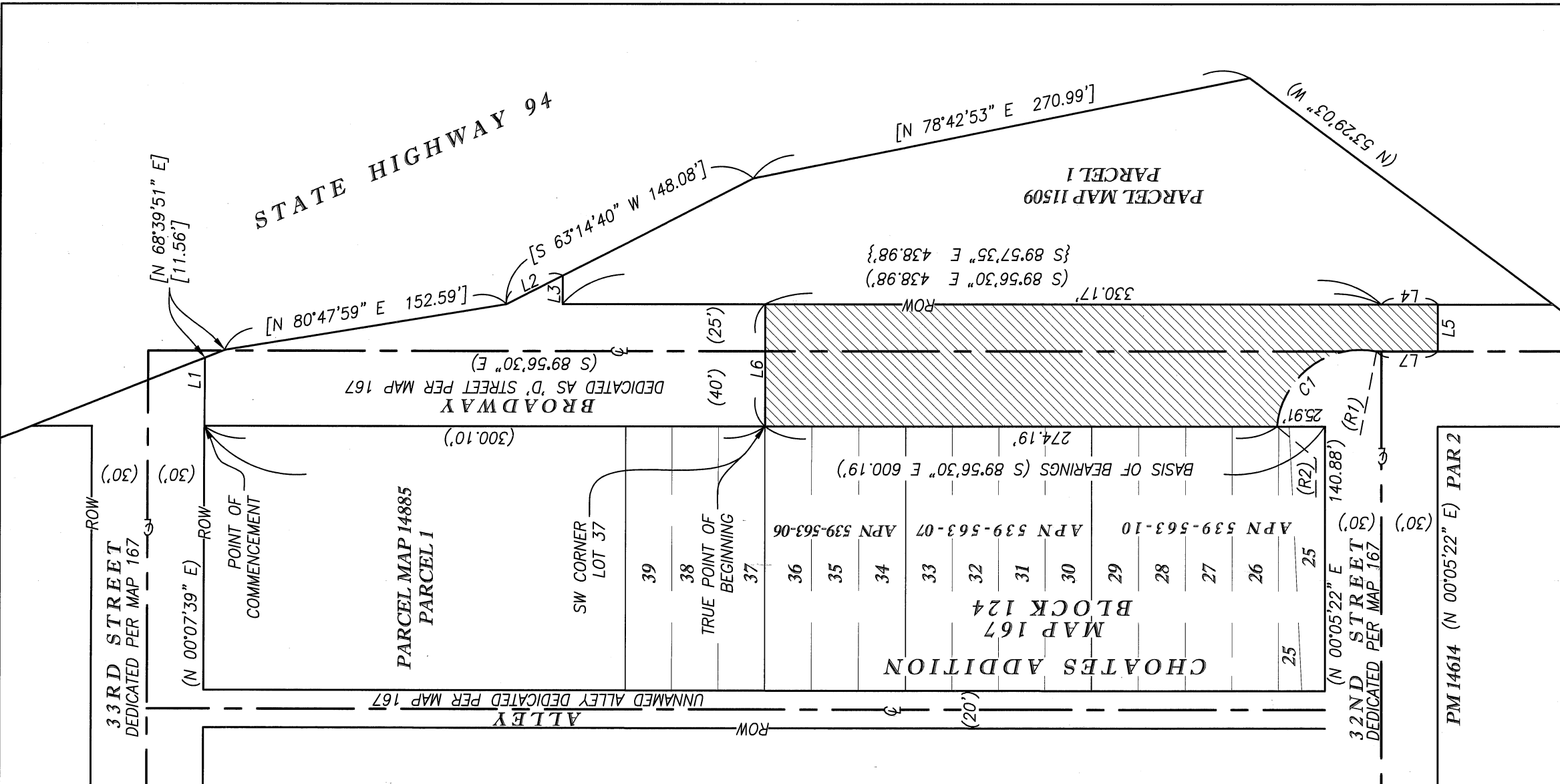
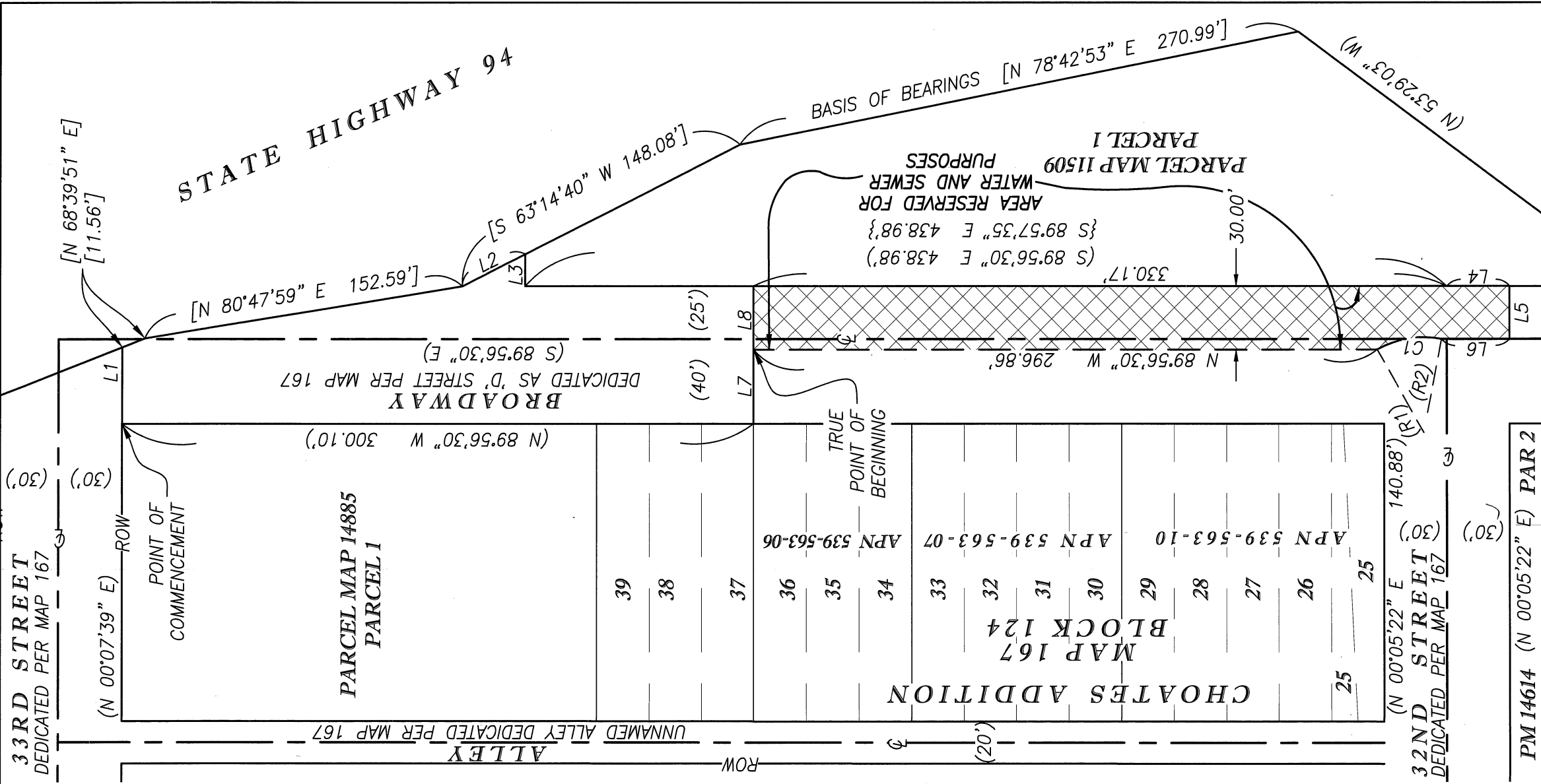


EXHIBIT 'B'

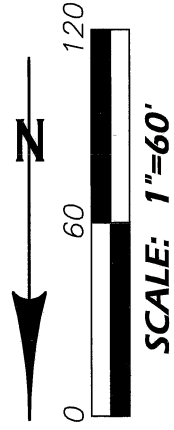


LEGEND

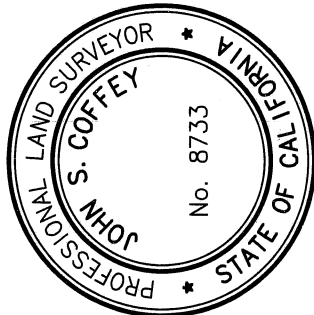
INDICATES PORTION OF BROADWAY RESERVED HEREON FOR WATER AND SEWER UTILITY PURPOSES 10,494 SQ. FT. (0.24 AC) MORE OR LESS

- PROPERTY LINE
- RIGHT-OF-WAY LINE
- CENTERLINE
- LOT LINE
- RECORD OR CALCULATED DATA PER PM 14885
- RECORD DATA PER CAL TRANS ROW MAP LO 37509
- RECORD DATA PER PM 11509

LINE/CURVE DATA TABLE	
ID	BEARING/DISTANCE/RADIUS/DELTA
L1	S 00°07'39" W, L=21.15'
L2	S 63°14'40" W, L=33.44'
L3	N 00°02'25" E, L=15.00'
L4	N 89°48'19" W, L=30.00'
L5	N 00°05'22" E, L=24.93'
L6	S 89°56'30" E, L=32.61'
L7	S 00°03'30" W, L=35.00'
L8	S 00°03'30" W, L=30.00'
C1	Δ=40°25'02", L=31.74, R=45.00'
(R1)	RADIAL= S 29°24'18" E
(R2)	RADIAL= S 11°00'43" W



SCALE: 1"=60'



John 11-11-20
 JOHN S. COFFEY LS 8733
 COFFEY ENGINEERING, INC.

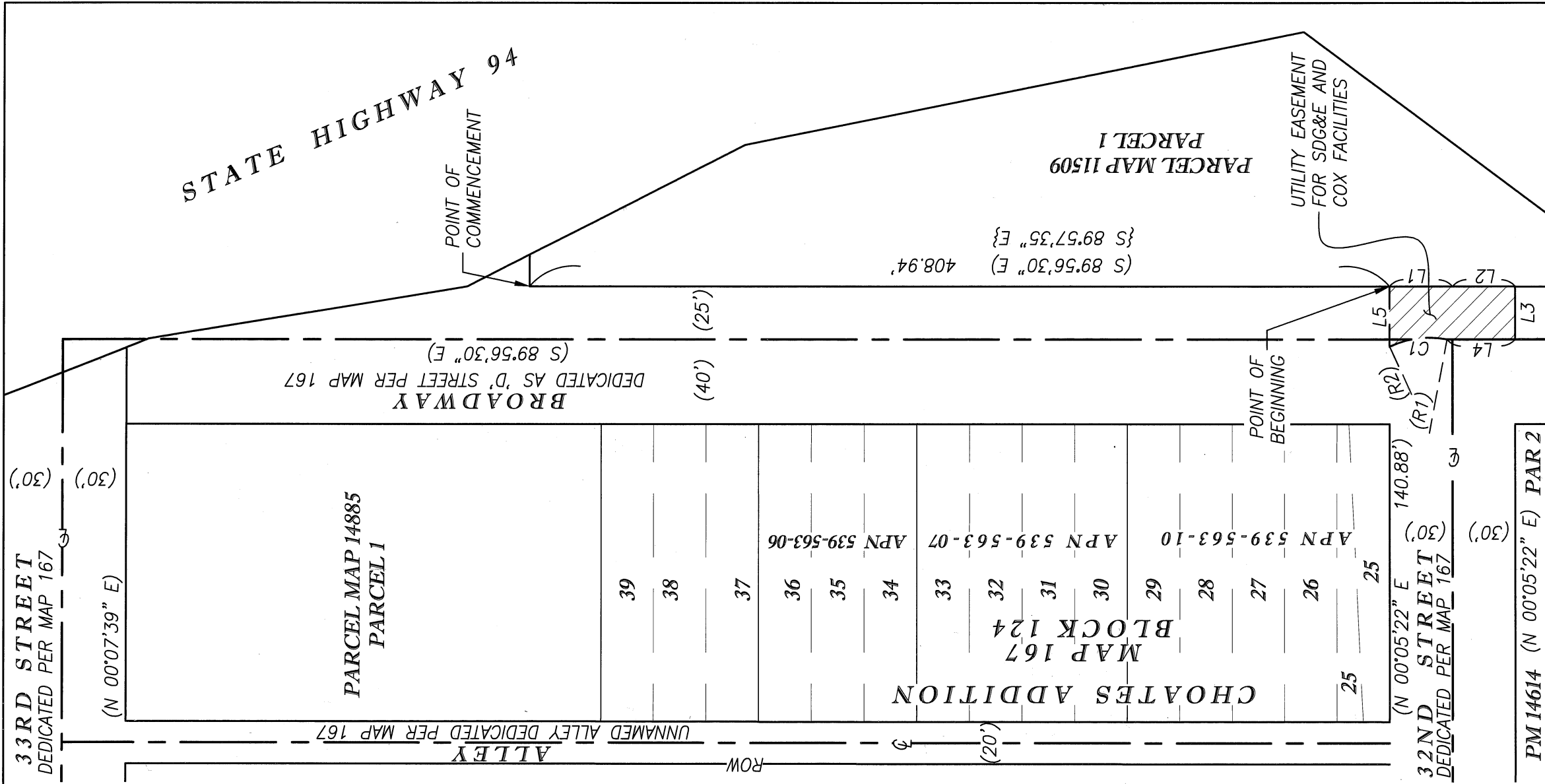
RESOLUTION NO. 313558
 ADOPTED MAY 25, 2021
 DOCUMENT NO. 2021-0653058
 RECORDED SEPTEMBER 15, 2021

WATER AND SEWER EASEMENT RESERVATION BETWEEN 32ND STREET AND 33RD STREET

DESCRIPTION	BY	APPROVED DATE	FILED	P.T.S.#
ORIGINAL	CE			637438
		CEP	11/11/20	
				1860-6269
				CCS 83
				220-1709
				LAMBERT COORDINATES
VACATED				41836-2-B

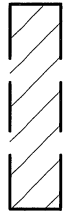
CITY OF SAN DIEGO, CALIFORNIA
 SHEET 2 OF 3 SHEETS
 P.T.S.# 637438
 1860-6269
 CCS 83
 220-1709
 LAMBERT COORDINATES
 41836-2-B

EXHIBIT 'B'



LEGEND

INDICATES PORTION OF BROADWAY RESERVED HEREON FOR GENERAL UTILITY PURPOSES
1,600 SQ FT. (0.037 AC) MORE OR LESS



PROPERTY LINE

RIGHT-OF-WAY LINE

CENTERLINE

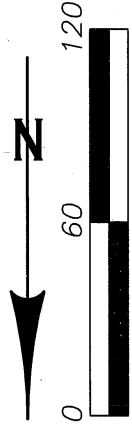
LOT LINE

() RECORD OR CALCULATED DATA PER PM 14885

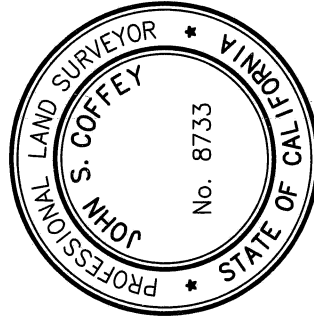
[] RECORD DATA PER CAL TRANS ROW MAP LO 37509

{ } RECORD DATA PER PM 11509

ID	LINE/CURVE DATA TABLE
L1	S 89°56'30" E, L=30.04'
L2	N 89°48'19" W, L=30.00'
L3	N 00°05'22" E, L=24.93'
L4	S 89°56'30" E, L=32.61'
L5	S 00°05'22" W, L=28.33'
C1	Δ=35°45'17", L=28.08, R=45.00'
(R1)	RADIAL= S 11°00'43" W
(R2)	RADIAL= S 24°44'34" E



SCALE: 1"=60'



[Signature] 11-11-20
JOHN S. COFFEY LS 8733
CE COFFEY ENGINEERING, INC.

RESOLUTION NO. 313558
ADOPTED MAY 25, 2021
DOCUMENT NO. 2021-0653058
RECORDED SEPTEMBER 15, 2021

UTILITY EASEMENT RESERVATION BETWEEN 32ND STREET AND 33RD STREET

DESCRIPTION	BY	APPROVED DATE	FILED	CITY OF SAN DIEGO, CALIFORNIA	P.T.S.#	637438
ORIGINAL	CE			SHEET 3 OF 3 SHEETS		
				<i>[Signature]</i>	1860-6269	
				FOR CITY LAND SURVEYOR	CCS 83	
				DATE	220-1709	
					LAMBERT COORDINATES	
					41836-3-B	

VACATED

STATUS