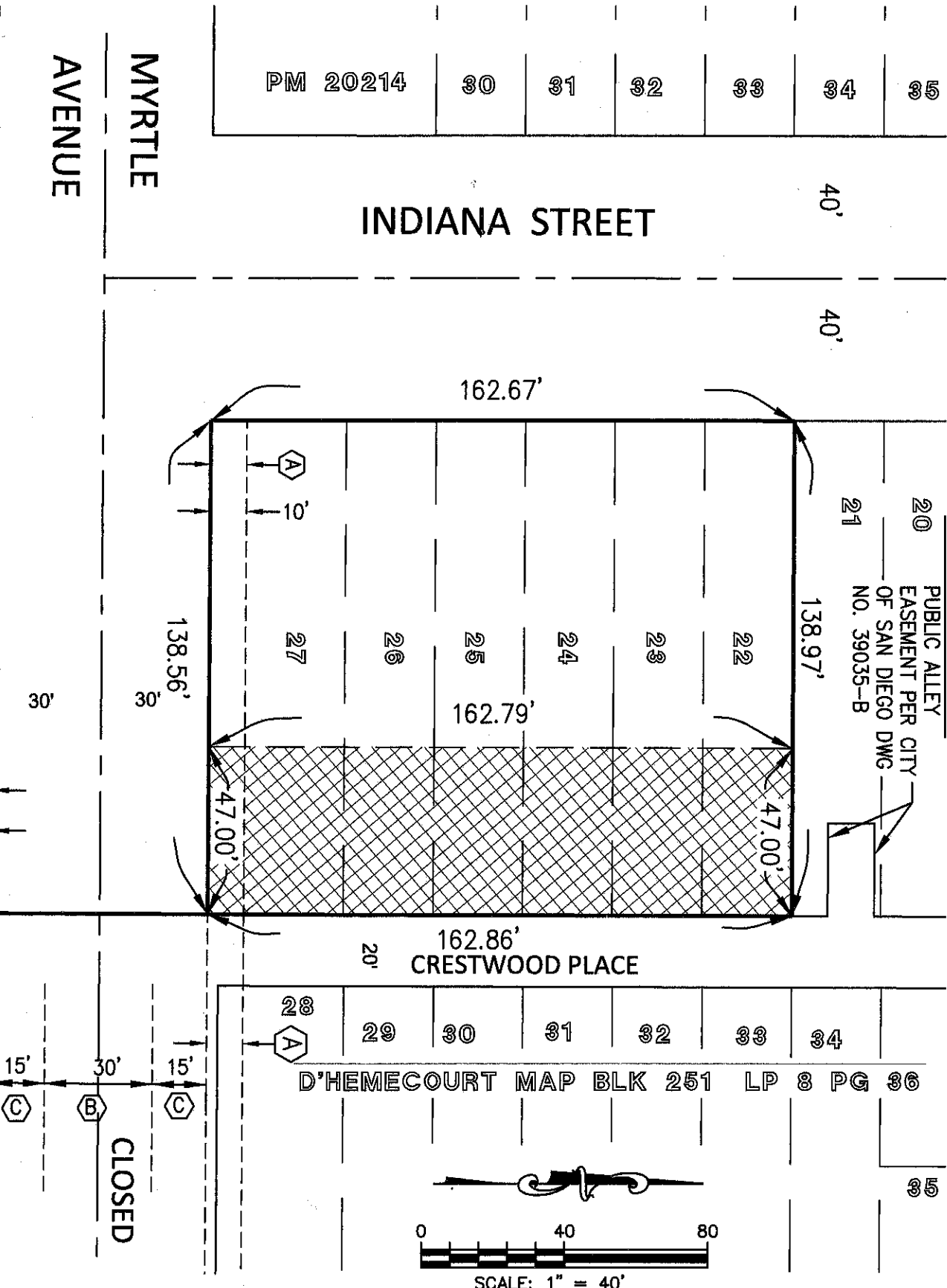


**EXHIBIT "B"**



**REFERENCE DRAWINGS**  
 DWG NO. 41148-4D, DWG NO. 41604-B

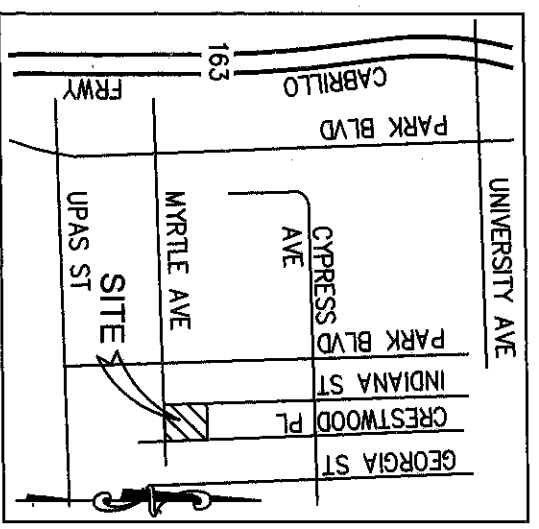
**ASSESSOR'S PARCEL NO.**  
 452-362-11 & 12

**LEGEND**

- (A) 10 FOOT PORTION OF MYRTLE AVENUE CLOSED BY RES. NO. 22979 OF THE COMMON COUNCIL OF THE CITY OF SAN DIEGO ON AUGUST 01, 1917.
  - (B) 30' WIDE PORTION OF MYRTLE AVENUE CLOSED BY RESOLUTION NO. 255344 OF THE COUNCIL OF THE CITY OF SAN DIEGO ON NOVEMBER 16, 1981. SEE DWG NO. 15428-B
  - (C) 15' WIDE PORTIONS OF MYRTLE AVENUE CLOSED BY RES. NO. 83059 REC. APRIL 30, 1946, DOC 1690
- INDICATES COVENANT OF EASEMENT ACQUIRED: 7,652.75 S.F.  
 INDICATES PROPERTY BOUNDARY  
 INDICATES RIGHT OF WAY LINE  
 INDICATES CENTERLINE

**NOTE:**

1. INDIANA STREET, MYRTLE AVENUE AND CRESTWOOD PLACE DEDICATED PER THE AMENDED MAP OF UNIVERSITY HEIGHTS MADE BY G.A. D'HEMECOURT.
2. INDIANA STREET, MYRTLE AVENUE, AND CRESTWOOD PLACE WERE ALL DEDICATED PER THE AMENDED MAP OF UNIVERSITY HEIGHTS MADE BY G.A. D'HEMECOURT.



**K & S ENGINEERING, INC.**  
 Planning · Engineering · Surveying

*Dennis W. Good*  
 DENNIS W. GOOD, LS 8084 DATE 2020.06.17  
 7801 Mission Center Court, Suite 100 San Diego, CA 92108  
 (619) 296-5565 Fax: (619) 296-5564

LICENSED LAND SURVEYOR  
 DENNIS W. GOOD  
 L.S. 8084  
 EXPIRES 12/31/21  
 STATE OF CALIFORNIA

DOC NO. \_\_\_\_\_

RECORDED \_\_\_\_\_

COVENANT OF EASEMENT OVER LOTS 22-27, BLOCK 251 OF UNIVERSITY HEIGHTS, AMENDED MAP BY G.A. D'HEMECOURT IN BOOK 8, PAGE 36 OF LIS PENDENS AND THAT PORTION OF MYRTLE AVENUE ADJOINING LOT 27 AS CLOSED BY RESOLUTION NO. 22979 ON AUG. 01, 1917

DESCRIPTION	BY	APPROVED	DATE	FILMED	CITY OF SAN DIEGO, CALIFORNIA DEVELOPMENT SERVICES DEPARTMENT SHEET 1 OF 1 SHEET	I.O.#	N/A
ORIGINAL	K&S	<i>FWL</i>	6/23			PTS#	660873
						1850-6286	
						CCS83 COORDINATES	
						210-1723	
						LAMBERT COORDINATES	

NOT COMPLETED STATUS

SECTION HEAD

41864-B