

EXHIBIT "B"

ASSESSORS PARCEL NUMBER
646-170-19 AND 646-170-24


BASIS OF BEARINGS

THE WESTERLY LINE OF PARCEL 1,
PARCEL MAP NO. 16553
I.E. N01°17'34"E

REFERENCE DWG #

30771-D
PARCEL MAP NO. 16553

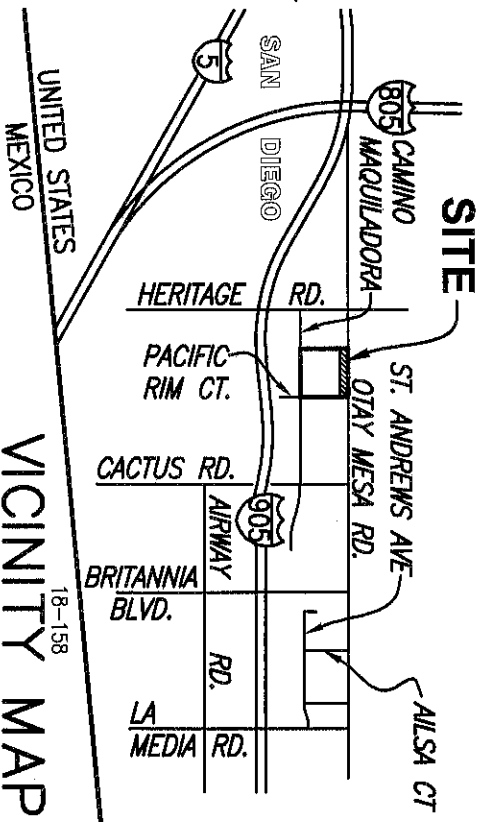
LEGEND

 IRREVOCABLE OFFER OF DEDICATION
AREA = 0.044 ACRES (1,904 SQ. FT.)

XXXX INDICATES ACCESS RIGHTS RELINQUISHED PER MAP NO. 12145

() INDICATES RECORD DATA PER P.M. NO. 16553

(R) RADIAL BEARING



VICINITY MAP
18-158
NO SCALE

OTAY MESA ROAD

POR. DEDICATED PER
DOC. NO. 1997-0090671
REC. 2/28/1997 O.R.

POR. DEDICATED
PER MAP 12145

POR. DEDICATED PER DOC. NO. 83-458395
RECORDED 12/16/1983

EASEMENTS

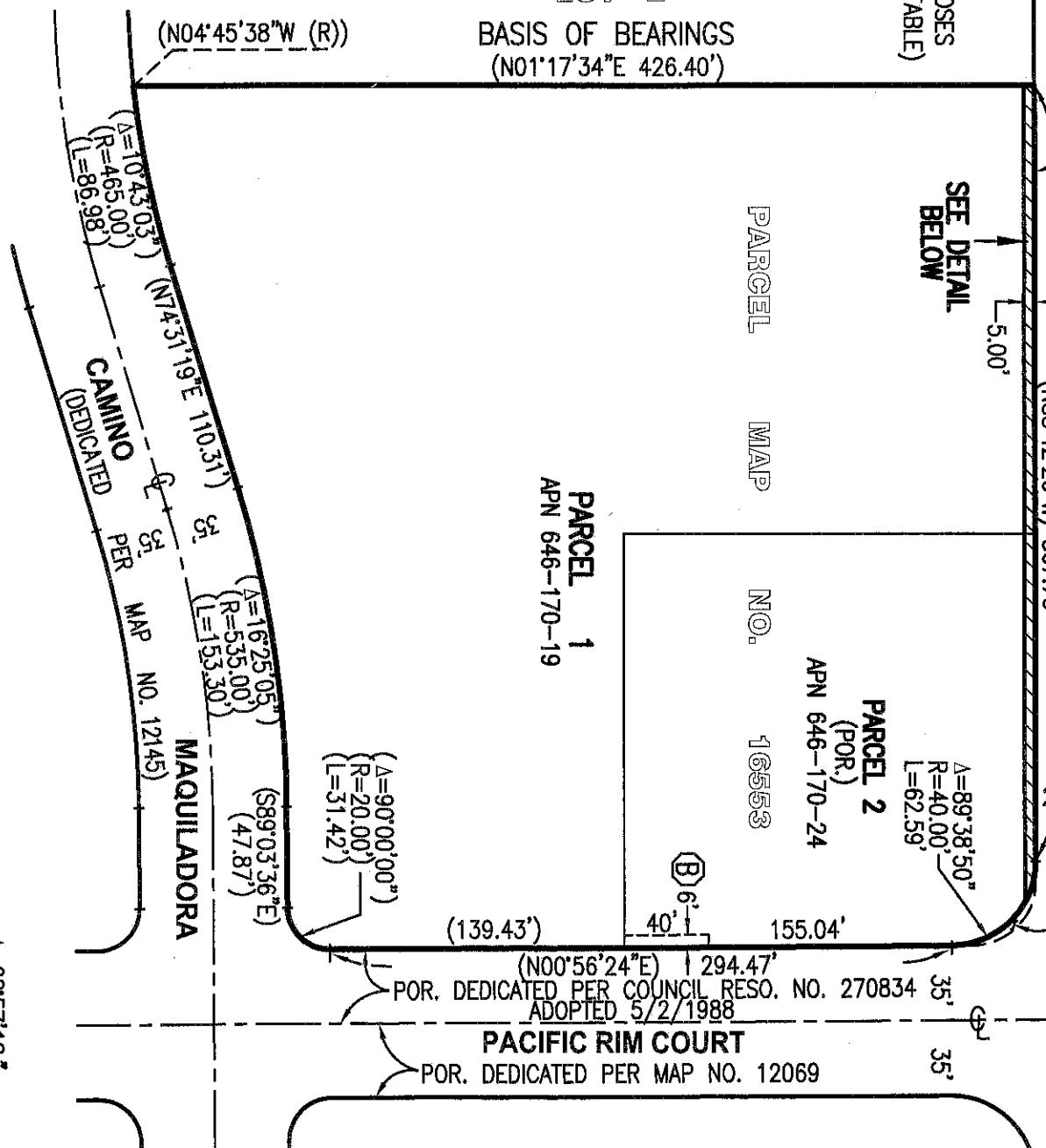
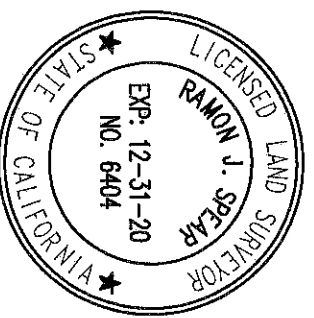
(A) EASEMENT FOR AVIGATION PURPOSES
PER MAP NO. 12145 (NOT PLOTTABLE)

(B) EASEMENT FOR PUBLIC UTILITIES
(SDG&E) REC. 12/19/2000,
DOC. NO. 2000-0690566 O.R.



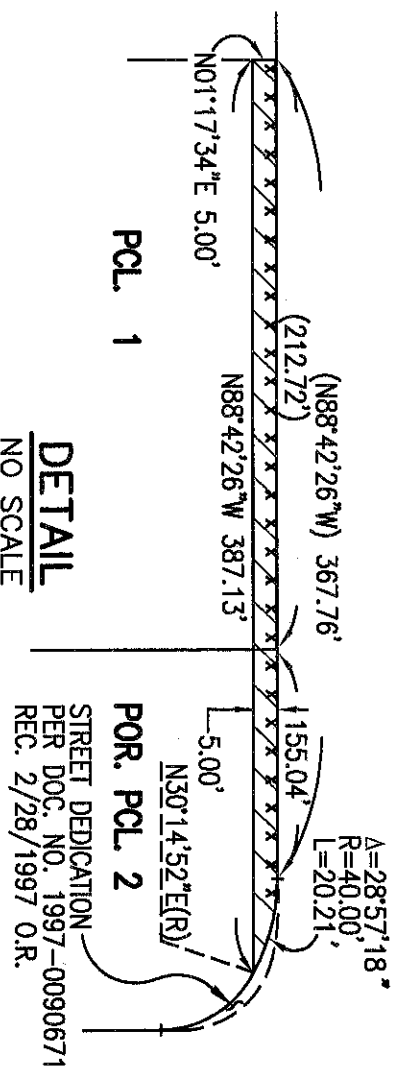
SCALE: 1" = 80'

MAP NO. 12145
LOT 2
BASIS OF BEARINGS
(N01°17'34"E 426.40')



BY: R. Spear 6/10/2020
RAMON J. SPEAR, L.S. 6404 DATE

SPEAR & ASSOCIATES, INC.
CIVIL ENGINEERING AND LAND SURVEYING
475 PRODUCTION STREET, SAN MARCOS, CA.
92078 PHONE (760) 736-2040



IRREVOCABLE OFFER OF DEDICATION IN PARCELS 1 & 2 OF PARCEL MAP NO. 16553

DESCRIPTION	BY	APPROVED	DATE	FILED	CITY OF SAN DIEGO, CALIFORNIA SHEET 1 OF 1 SHEETS	PTS # 662077
ORIGINAL			8-18-20			I.D. NO. N/A
					FOR CITY LAND SURVEYOR	1786-6331
					DATE	NAD83 COORDINATES
						146-1771
					DIVISION HEAD	LAMBERT COORDINATES
					SECTION HEAD	41893-B

DOC. NO.: 2020-0401389
RECORDED: 7/24/20
ACQUIRED STATUS