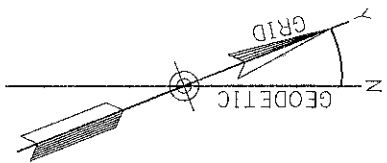


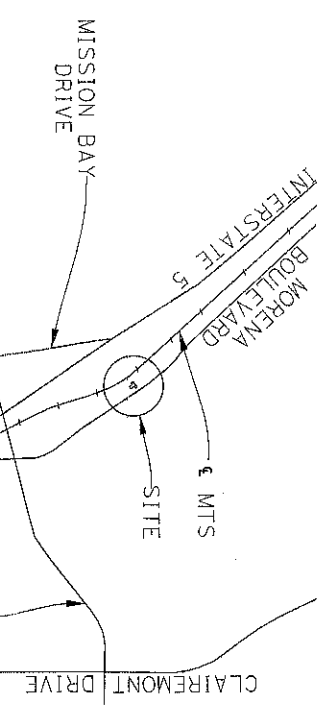
EXHIBIT "C"

BASIS OF BEARINGS

THE BASIS OF BEARINGS FOR THIS PLAT IS CCS83, ZONE 6, EPOCH 1991.35, GRID BEARING BETWEEN CITY OF SAN DIEGO FIRST ORDER HORIZONTAL CONTROL STATIONS "GPS-207" AND "GPS-251" BEING N12°06'48"W, PER ROS 14492.



CONVERGENCE ANGLE AT GPS STATION 207 -00°31'33.36"
 THE COMBINED GRID FACTOR AT GPS-207 IS 1.0000016 USING AN ELEVATION OF 55.50' (NAVD88).



VICINITY MAP NOT TO SCALE

LEGEND
 POINT OF COMMENCEMENT
 TRUE POINT OF BEGINNING
 POINT OF TERMINUS
 P.O.T.
 P.O.C.
 T.P.O.B.
 P.O.T.
 (*)
 (*)
 BEARINGS AND DISTANCES TIED TO RECORD ARE IN ACCORDANCE WITH THE LAND NET SURVEY PROVIDED BY SANDAG FOR THE MID-COAST TRANSIT PROJECT.

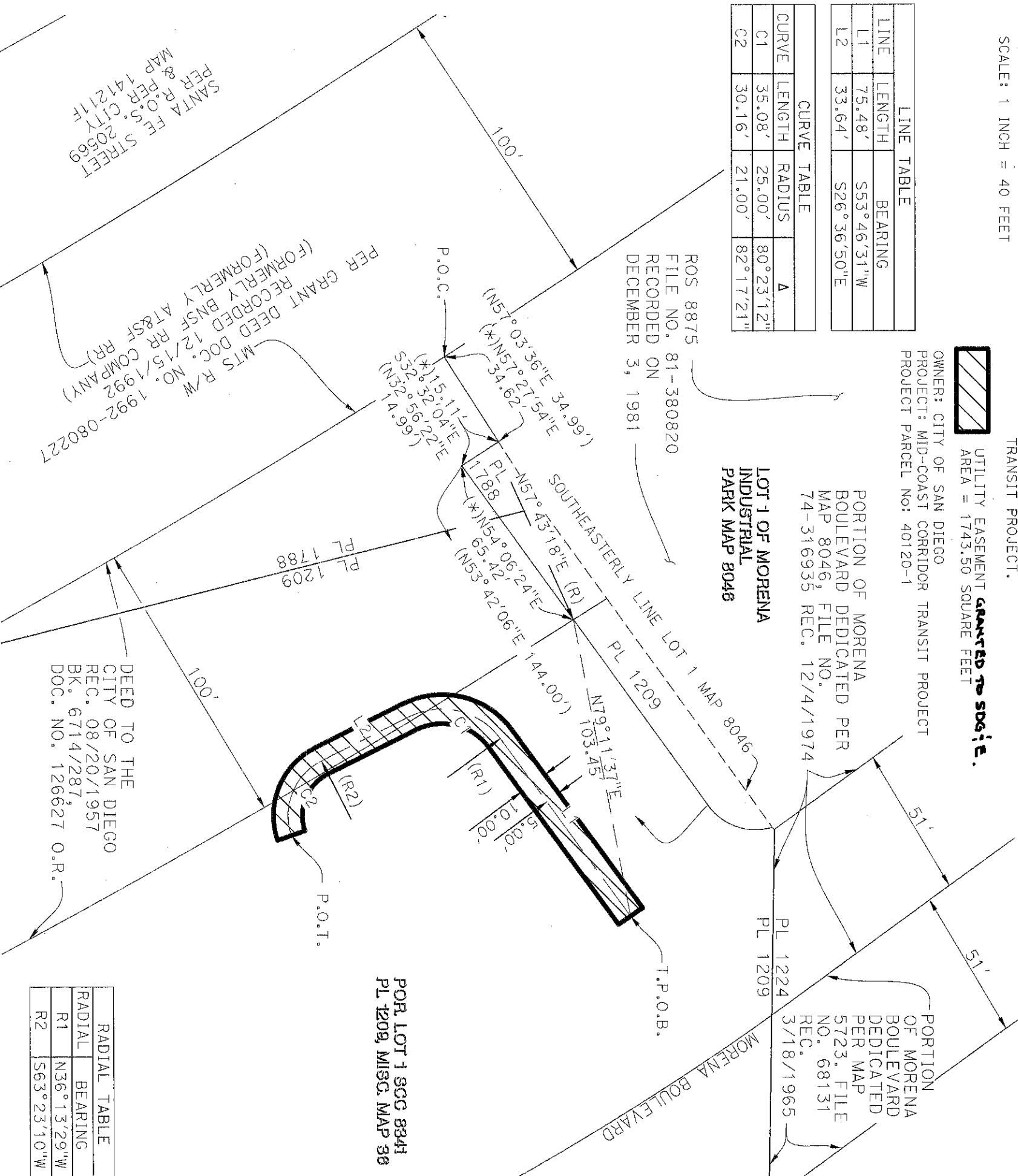
UTILITY EASEMENT **GRANTED TO SDG&E.**
 AREA = 1743.50 SQUARE FEET

OWNER: CITY OF SAN DIEGO
 PROJECT: MID-COAST CORRIDOR TRANSIT PROJECT
 PROJECT PARCEL NO: 40120-1

PORTION OF MORENA BOULEVARD DEDICATED PER MAP 8046, FILE NO. 74-316935 REC. 12/4/1974

LOT 1 OF MORENA INDUSTRIAL PARK MAP 8046

LINE TABLE			
LINE	LENGTH	BEARING	
L1	75.48'	S53°46'31"W	
L2	33.64'	S26°36'50"E	
CURVE TABLE			
CURVE	LENGTH	RADIUS	Δ
C1	35.08'	25.00'	80°23'12"
C2	30.16'	21.00'	82°17'21"



RADIAL TABLE		
RADIAL	BEARING	
R1	N36°13'29"W	
R2	S63°23'10"W	

PREPARED BY:
 PSOMAS
 401 B STREET, SUITE 1600
 SAN DIEGO, CA 92101
 (619) 961-2392



GREGORY A. HELMER, PLS 5134 DATE 12/11/20

UTILITY EASEMENT

LOT 1 OF PARTITION AND DECREE IN CASE NO. 8341 S.C.C. IN PORTION OF PUEBLO LOT 1209, PUEBLO LANDS OF SAN DIEGO, MISC. MAP 36.

DESCRIPTION	BY	APPROVED	DATE	FILMED	CITY OF SAN DIEGO, CALIFORNIA	P.T.S.
ORIGINAL	MD	FAL	2/16/20		SHEET 1 OF 1 SHEET	I.O. 24006530
						1876-6261
						NAD 83 COORDINATES
						236-1701
						NAD 27 COORDINATES
						41957-B

COMPLETE

STATUS