

EXHIBIT 'B'

APN: 343-230-38 PARCEL 1 PM 20824
 4110 CAMPUS POINT CT
 OWNER: ARE-SD REGION NO. 47, LLC
 APN: 343-230-40 PARCEL 3 PM 20824
 4224 CAMPUS POINT CT
 OWNER: ARE-SD REGION NO. 61, LLC
 APN: 343-230-42 POR. PARCEL 1 PM 14065
 10260 CAMPUS POINT DR.
 APN: 343-230-43 PARCEL 2 PM 20824
 4161 CAMPUS POINT CT
 OWNER: ARE-SD REGION NO. 57, LLC
 REFERENCES: PM 14065, 20824, MAP 9930

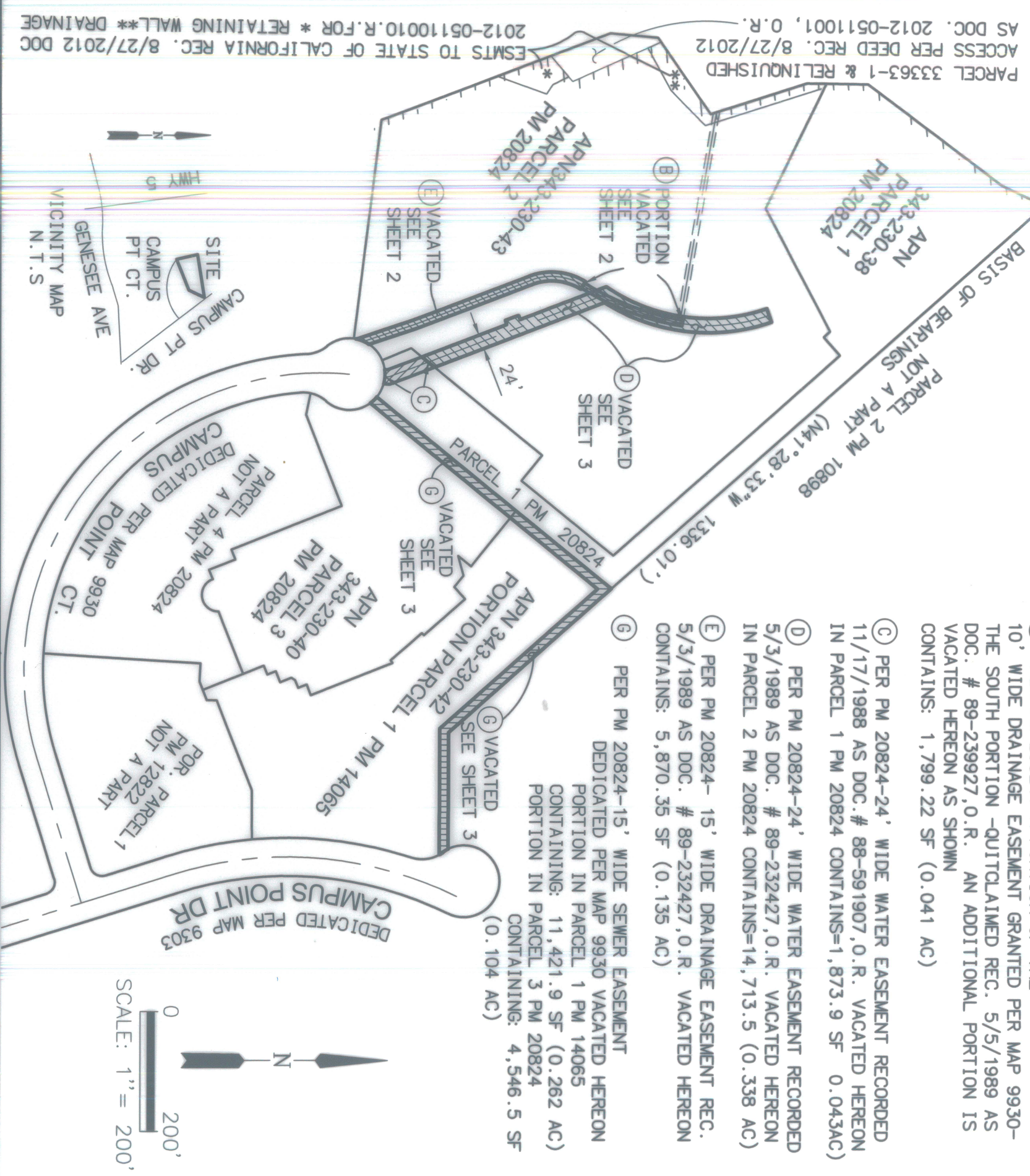
LEGEND
 () = RECORD DATA PER PM 20824
 [] = RECORD DATA PER PM 14065
 < > = RECORD DATA PER DEED 2012-0511001

ACCESS RIGHTS RELINQUISHED BY DEEDS
 REC. 7/25/1963 FILE 63-129729, O.R.
 REC. 1/28/1964 FILE 64-16766 O.R. (PER MAPS 9303, 9930)
 AND PORTION PER DEED REC. 8/27/2012 AS DOC.
 2012-0511001, O.R. AS SHOWN

THE BASIS OF BEARINGS OF THIS PLAT IS THE NLY LINE OF PARCEL MAP 20824 IE N 41°28'33" W

 **EASEMENTS VACATED HEREON:**

- (B) PER PM 20824. A PORTION OF THE 10' WIDE DRAINAGE EASEMENT GRANTED PER MAP 9930- THE SOUTH PORTION -QUITCLAIMED REC. 5/5/1989 AS DOC. # 89-239927, O.R. AN ADDITIONAL PORTION IS VACATED HEREON AS SHOWN
 CONTAINS: 1,799.22 SF (0.041 AC)
- (C) PER PM 20824-24' WIDE WATER EASEMENT RECORDED 11/17/1988 AS DOC. # 88-591907, O.R. VACATED HEREON IN PARCEL 1 PM 20824 CONTAINS=1,873.9 SF 0.043AC)
- (D) PER PM 20824-24' WIDE WATER EASEMENT RECORDED 5/3/1989 AS DOC. # 89-232427, O.R. VACATED HEREON IN PARCEL 2 PM 20824 CONTAINS=14,713.5 (0.338 AC)
- (E) PER PM 20824- 15' WIDE DRAINAGE EASEMENT REC. 5/3/1989 AS DOC. # 89-232427, O.R. VACATED HEREON CONTAINS: 5,870.35 SF (0.135 AC)
- (G) PER PM 20824-15' WIDE SEWER EASEMENT DEDICATED PER MAP 9930 VACATED HEREON PORTION IN PARCEL 1 PM 14065 CONTAINING: 11,421.9 SF (0.262 AC) PORTION IN PARCEL 3 PM 20824 CONTAINING: 4,546.5 SF (0.104 AC)

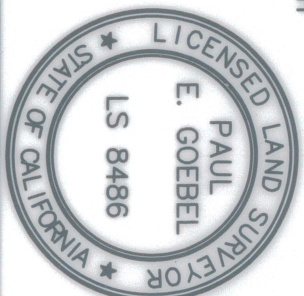


ESMTS TO STATE OF CALIFORNIA REC. 8/27/2012 DOC 2012-05110010.R.FOR * RETAINING WALL** DRAINAGE AS DOC. 2012-0511001, O.R.

Michael Baker 174310 CAMPUS POINT

INTERNATIONAL
 9755 CLAIREMONT MESA BLVD
 SAN DIEGO, CALIFORNIA 92124-1324
 PHONE: 858.614.9000

PAUL E. GOEBEL LS 8486 8/19/2020



DOCUMENT NO. 2022-0455046, 0454995, 0454971
 RECORDED Dec 01, 2022 0455324
 RESOLUTION NO. CM-7157
 RECORDED 7/19/2022

DRAINAGE, SEWER & WATER EASEMENT VACATIONS
 IN PARCELS 1, 2 & 3 PM 20824; & PORTION OF PARCEL 1 PM 14065 - SAN DIEGO, CA

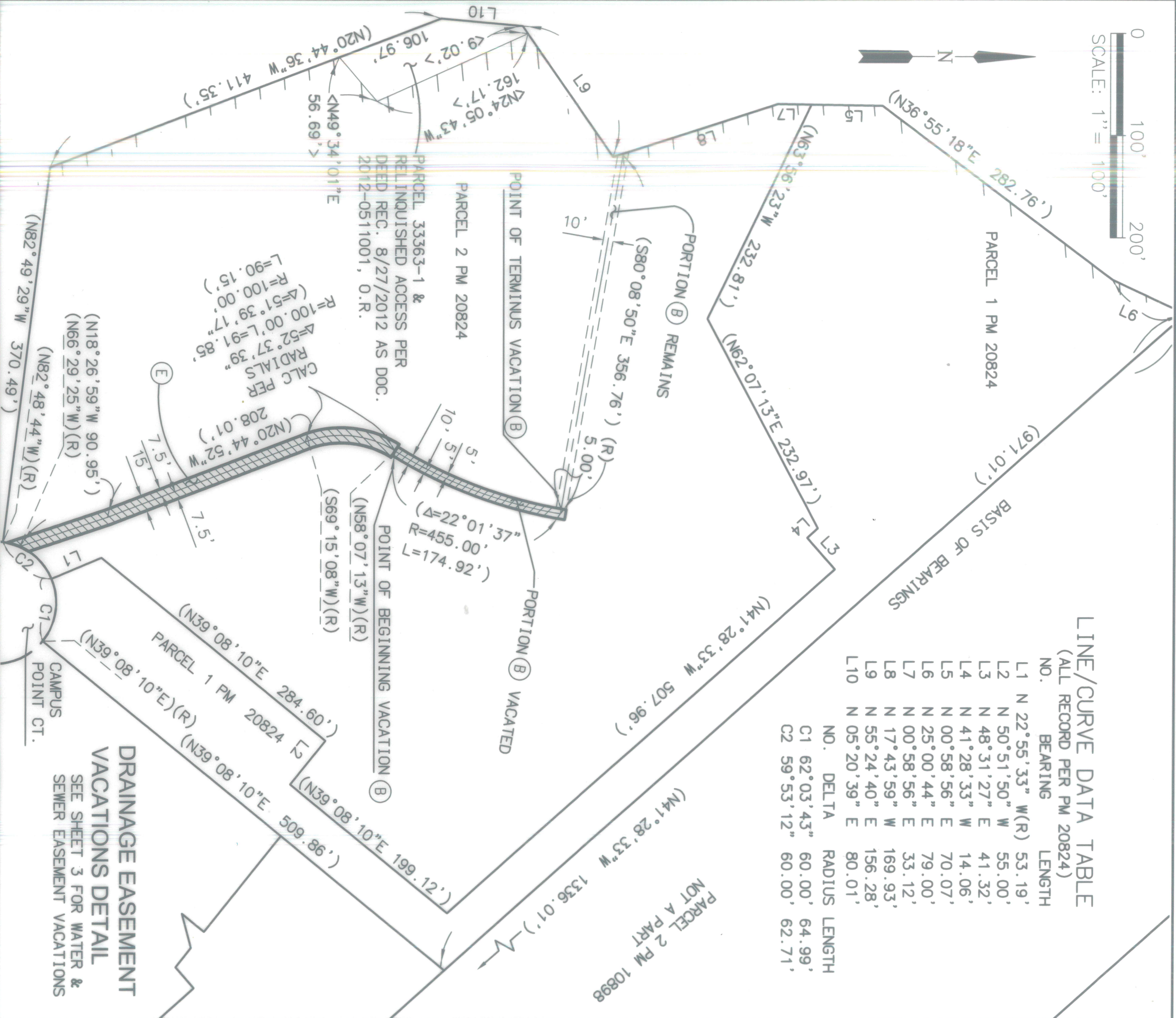
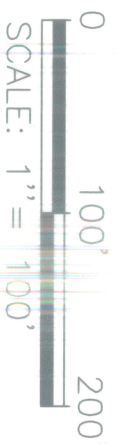
DESCRIPTION	BY	APPROVED DATE	FILMED	CITY OF SAN DIEGO, CALIFORNIA	PTS
ORIGINAL 5.1.20	MBI			SHEET 1 OF 3 SHEETS	651935
2ND SUB 6.11.20	MBI				1.0. 24008460
3RD SUB 7.16.20	MBI				1904-6259
				FOR CITY LAND SURVEYOR DATE <u>9/1/2020</u>	CCS 83 COORDINATES
					264-1699
					NAD27 COORDINATES

VACATED

STATUS

41982-B

EXHIBIT 'B'



LINE/CURVE DATA TABLE
(ALL RECORD PER PM 20824)

NO.	BEARING	LENGTH
L1	N 22°55'33" W(R)	53.19'
L2	N 50°51'50" W	55.00'
L3	N 48°31'27" E	41.32'
L4	N 41°28'33" W	14.06'
L5	N 00°58'56" E	70.07'
L6	N 25°00'44" E	79.00'
L7	N 00°58'56" E	33.12'
L8	N 17°43'59" W	169.93'
L9	N 55°24'40" E	156.28'
L10	N 05°20'39" E	80.01'

NO.	DELTA	RADIUS	LENGTH
C1	62°03'43"	60.00'	64.99'
C2	59°53'12"	60.00'	62.71'

DRAINAGE EASEMENT VACATIONS DETAIL
SEE SHEET 3 FOR WATER & SEWER EASEMENT VACATIONS

Michael Baker
INTERNATIONAL
9755 CLAIREMONT MESA BLVD
SAN DIEGO, CALIFORNIA 92124-1324
PHONE: 858.614.5000

174310 CAMPUS POINT

DOCUMENT NO. 2022-0495046, 2022-0454995
RECORDED 12/11/2022
RESOLUTION NO. CM-7157
RECORDED 7/19/22

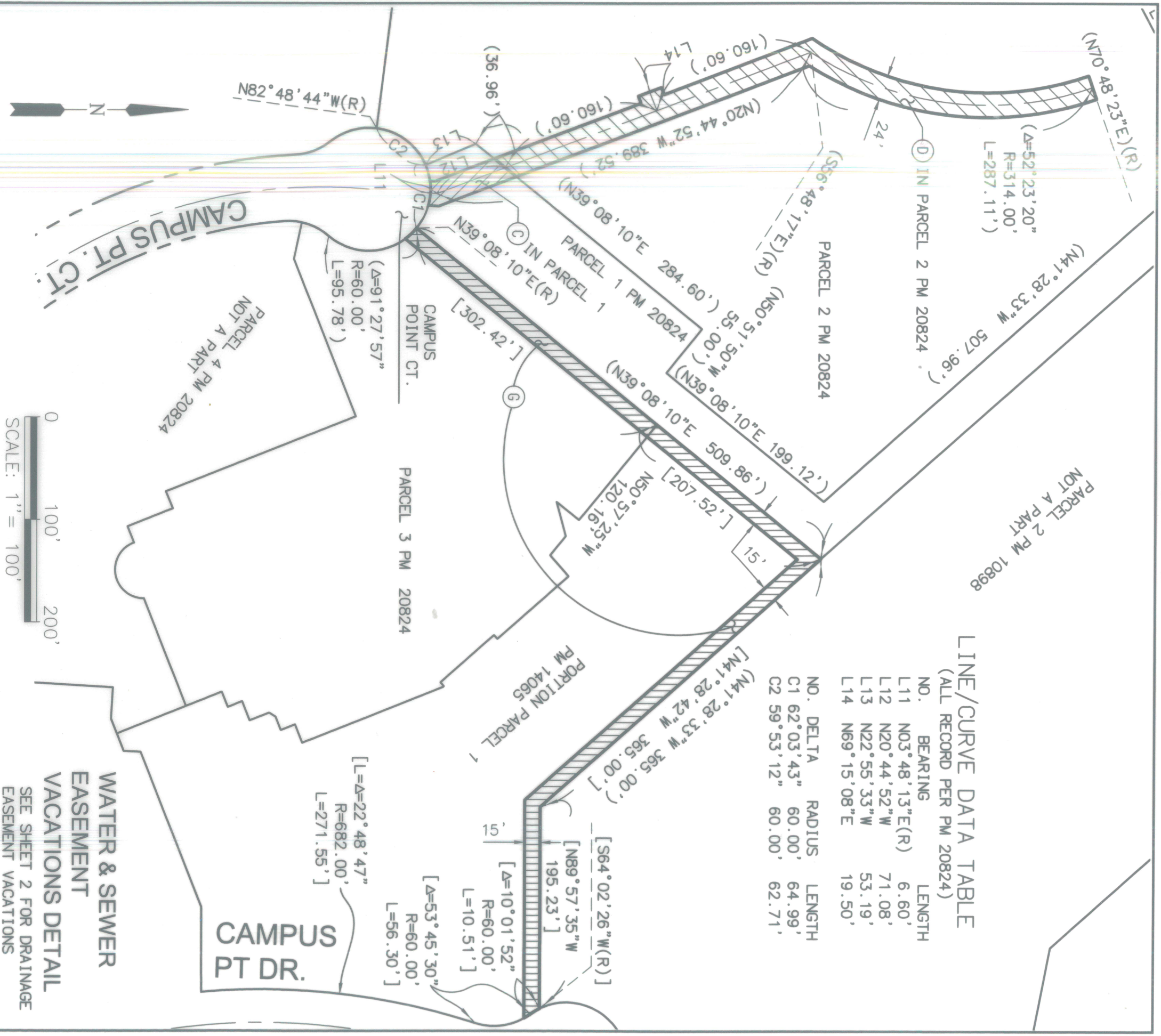
DRAINAGE, SEWER & WATER EASEMENT VACATIONS
IN PARCELS 1, 2 & 3 PM 20824; & PORTION OF PARCEL 1 PM 14065 - SAN DIEGO, CA

DESCRIPTION	BY	APPROVED DATE	FILMED	CITY OF SAN DIEGO, CALIFORNIA	PTS
ORIGINAL 5.1.20	MBI			SHEET 2 OF 3 SHEETS	651935
2ND SUB 6.11.20	MBI				1.0. 24008460
3RD SUB 7.16.20	MBI				1904-6259

VACATED

STATUS

FOR CITY LAND SURVEYOR	DATE	CCS 83 COORDINATES	NAD27 COORDINATES
<i>Arthur R. Fry</i>	<u>9/1/2020</u>	264-1699	41982-B



LINE/CURVE DATA TABLE
(ALL RECORD PER PM 20824)

NO.	DELTA	BEARING	RADIUS	LENGTH
C1	62°03'43"	N03°48'13"E(R)	60.00'	64.99'
C2	59°53'12"	N20°44'52"W	60.00'	62.71'
L11		N03°48'13"E(R)		6.60'
L12		N20°44'52"W		71.08'
L13		N22°55'33"W		53.19'
L14		N69°15'08"E		19.50'

WATER & SEWER
EASEMENT
VACATIONS DETAIL
SEE SHEET 2 FOR DRAINAGE
EASEMENT VACATIONS

Michael Baker

INTERNATIONAL
9755 CLAIREMONT MESA BLVD
SAN DIEGO, CALIFORNIA 92124-1324
PHONE: 858.614.5000

174310 CAMPUS POINT

2022-0455046, 2022-0454999
DOCUMENT NO. 2022-0454971 & 2022-0455324

RECORDED
RESOLUTION NO. CM-7157
RECORDED 7/19/22

DRAINAGE, SEWER & WATER EASEMENT VACATIONS
IN PARCELS 1, 2 & 3 PM 20824; PARCEL 1 PM 14065 - SAN DIEGO, CA

DESCRIPTION	BY	APPROVED	DATE	FILMED
ORIGINAL 5.1.20	MBI			
2ND SUB 6.11.20	MBI			
3RD SUB 7.16.20	MBI			

CITY OF SAN DIEGO, CALIFORNIA		PTS
SHEET 3 OF 3 SHEETS		651935
		I.O. 24008460
		1904-6259
		CCS 83 COORDINATES
		264-1699
		NAD27 COORDINATES

VACATED

STATUS

FOR CITY LAND SURVEYOR DATE 9/1/2020
NAD27 COORDINATES
41982-B