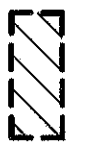



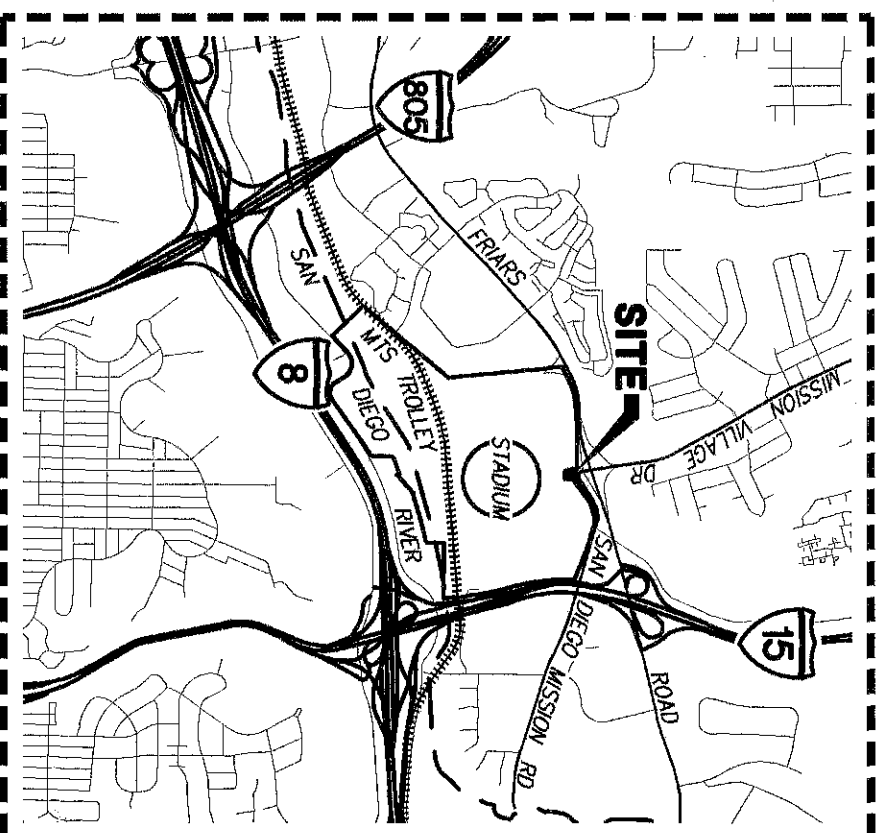
**REFERENCE DRAWINGS**

- ROS 16584      • ROS 22269      • PARTITION MAP NO. 348
- ROS 6205      • PM 8041      • PM 17464
- PM 11755      • MAP 9031      • PM 780
- PM 7254      • PM 18354      • PM 20501
- MAP 11675      • MAP 13858      • 41906-D
- 41772-B      • 41773-B      • 42400-D

**LEGEND**

-  **PARCEL 'A'**  
INDICATES STREET VACATED HEREON  
AREA = 2.041 ACRES, MORE OR LESS
-  **PARCEL 'B'**  
INDICATES STREET VACATED HEREON  
AREA = 0.615 ACRES, MORE OR LESS

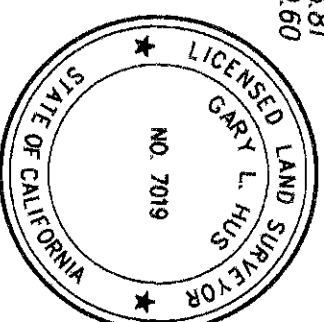
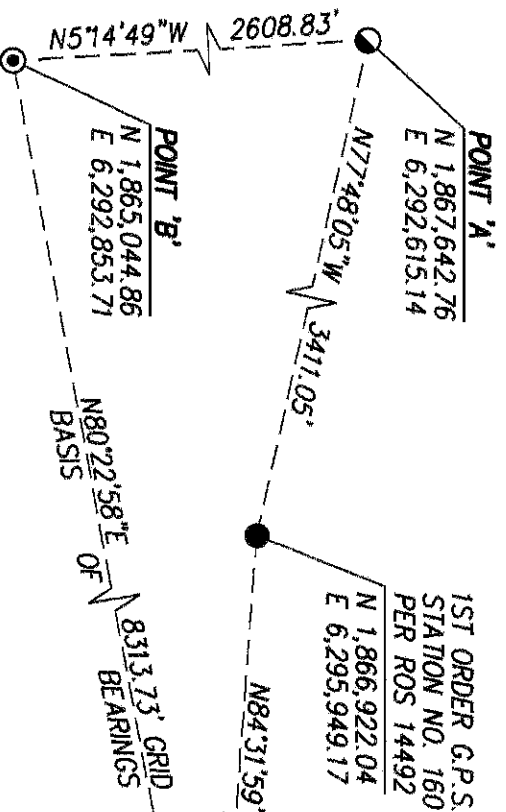
- INDICATES FOUND 2" IRON PIPE WITH CITY ENGINEERING DISK SET BY CITY FIELD ENGINEERING CREW IN SEPTEMBER 1967 PER CITY W.O. NO. 17600, INDEX 222-1731. SEE MAP 11675, MAP 13858 & PARCEL MAP 18354.
- ◎ INDICATES FOUND 3/4" IRON PIPE WITH DISK STAMPED "RCE 27232" PER PARCEL MAP 18354
- P.O.C. INDICATES POINT OF COMMENCEMENT
- P.O.B. INDICATES POINT OF BEGINNING
- { } INDICATES RECORD DATA PER QUITCLAIM DEED REC. 03/03/1967 AS F/P NO. 29314, O.R.
- ( ) INDICATES RECORD DATA PER QUITCLAIM DEED REC. 02/25/1998 AS DOC. NO. 1998-0098902, O.R.
- [ ] INDICATES RECORD DATA PER PRELIMINARY TITLE REPORT PROVIDED BY CHICAGO TITLE COMPANY DATED 11/25/2019 AS ORDER NO. 00101787-004-RM1-CFU



**BASIS OF BEARINGS**

THE BASIS OF BEARINGS FOR THIS SURVEY IS THE CALIFORNIA COORDINATE SYSTEM OF 1983, ZONE 6, EPOCH 1991.35 GRID BEARING BETWEEN FIRST ORDER G.P.S. STATION NO. 160 AND FIRST ORDER G.P.S. STATION NO. 217 PER ROS 14492. I.E., NORTH 84°31'59" WEST

THE COMBINED SCALE FACTOR AT G.P.S. STATION 160 IS 1.0000001. QUOTED BEARINGS FROM REFERENCE DEEDS/MAPS MAY OR MAY NOT BE IN TERMS OF SAID SYSTEM.



**BASIS OF BEARINGS DETAIL**

NOT TO SCALE

*Gary L. Hus*  
GARY L. HUS, L.S. 7019      DATE 08-17-2021



**PROJECT DESIGN CONSULTANTS**  
Planning | Landscape Architecture | Engineering | Survey  
701 B Street, Suite 800      San Diego, CA 92101  
619.236.6471 Tel      619.234.0349 Fax

RESOLUTION NO. R-314064  
ADOPTED APRIL 12, 2022  
DOCUMENT NO. 2023-0120862  
RECORDED MAY 9, 2023

**STREET VACATION WITH RESERVATIONS  
ACCESS & VARIOUS UTILITY EASEMENT**

WITHIN A PORTION OF LOT 36 OF RANCHO MISSION SAN DIEGO OF PARTITION MAP SUPERIOR COURT CASE NO. 348 "JUAN M. LUCCO, ET AL, VS, THE COMMERCIAL BANK OF SAN DIEGO, ET AL"

DESCRIPTION	BY	APPRVD.	DATE	FILMED
ORIGINAL	PDC	ERL	5/13	

CITY OF SAN DIEGO, CALIFORNIA  
SHEET 1 OF 11 SHEETS  
*Val R. Ry*  
FOR CITY LAND SURVEYOR      DATE 8/17/2021

P.T.S. NO. 665002  
I.O. NO. N/A  
1840-6303  
CCS83 COORDINATES  
200-1743  
LAMBERT COORDINATES

COMPLETE

STATUS

41985-1-B

LINE	DIRECTION	LENGTH
L1	N46°22'09"E [S46°23'22"W]	338.22'
L2	S32°12'56"E [N32°12'24"W]	168.35' 168.35']
L3	N54°55'56"E [S54°56'28"W]	756.09'
L4	N1°05'25"E [S1°05'35"W]	321.94' 321.77']
L5	S1°05'02"W [N1°05'35"E]	50.26' 50.23']
L6	N4°22'18"E [S4°28'35"W]	371.19' 371.20']
L7	S1°04'30"W [N0°38'01"W]	12.03' 16.86']
L8	N0°55'04"E [S0°38'01"W]	261.79' 261.68']
L9	S89°02'33"E	817.50'
L10	N4°21'01"W [S4°20'34"E]	245.73'
L11	N58°06'39"W [S58°07'54"E]	2.63'
L12	N15°38'32"W [N15°38'54"W]	101.74' 101.74']
L13	N2°29'05"E [N2°28'43"E]	102.43' 102.43']
L14	N6°7'09'34"W [N6°7'09'56"W]	466.90' 467.00']
L15	N7°3'26'13"W [N7°3'26'35"W]	345.09' 344.99']
L16	S5°59'11"W [S5°58'49"W]	395.86' 395.86']
L17	S0°00'22"W [S0°00'00"W]	120.00' 120.00']
L18	N89°59'38"W [N90°00'00"W]	110.00' 110.00']
L19	N16°26'15"W [N16°26'46"W]	194.27' 194.27']
L20	N89°59'32"W [N90°00'00"W]	550.56' 550.67']
L21	S87°00'16"W [S87°00'00"W]	350.29' 350.18']
L22	S62°13'09"W [S62°12'47"W]	193.23' 193.09']
L23	S5°14'49"E	313.06'
L24	N68°04'54"E	263.04'
L25	N69°10'15"E	243.00'

LINE	DIRECTION	LENGTH
L26	N70°34'18"E	322.41'
L27	N79°58'11"E	56.20'
L28	N84°43'16"E	215.18'
L29	S85°52'47"E	122.60'
L30	N65°40'08"E	191.39'
L31	N85°12'18"E	334.12'
L32	S88°52'36"E	395.67'
L33	N77°44'24"E	1050.07'
L34	N81°45'29"E	59.66'
L35	N5°14'49"W [N5°14'33"W]	71.10' 70.38']
L36	N62°12'52"E [N62°12'47"E]	154.88' 156.54']
L37	N87°00'22"E [N87°00'00"E]	387.71' 386.11']
L38	N71°35'53"E [N71°35'31"E]	924.13' 923.84']
L39	S79°52'10"E [S79°52'32"E]	149.80' 149.77']
L40	S0°41'37"W [S0°54'06"W]	21.59' 21.58']
L41	S72°13'17"E [S72°13'39"E]	530.72' 530.72']
L42	S21°05'29"W [S21°05'07"W]	43.80' 43.79']
L43	S72°12'55"E [S72°13'17"E]	97.37' 97.37']
L44	S67°55'34"E [S67°55'56"E]	116.79' 116.79']
L45	S22°19'17"W [S14°11'26"W]	0.30' 0.85']
L46	N84°36'16"E	14.77'
L47	N88°00'09"E	132.79'
L48	N83°53'49"E	18.66'
L49	S86°52'29"E	66.82'
L50	N83°26'08"E	177.92'

LINE	DIRECTION	LENGTH
L51	S9°40'15"E	1.57'
L52	N76°30'41"E	161.29'
L53	N57°33'47"E	338.10'
L54	N90°00'00"E	33.89'
L55	S1°02'59"W	52.21'

**EXISTING EASEMENTS**

- ① PUBLIC ROAD EASEMENT GRANTED TO THE COUNTY OF SAN DIEGO PER DOCUMENT REC. 08/22/1896 IN BOOK 255, PAGE 18 OF DEEDS.
- ② 25' WIDE WATER EASEMENT GRANTED TO THE CITY OF SAN DIEGO PER INST. NO. 80-427413, REC. 12/19/1980, O.R.
- ③ 12' WIDE PUBLIC UTILITIES & INGRESS/EGRESS EASEMENT GRANTED TO SAN DIEGO GAS & ELECTRIC COMPANY PER INST. NO. 1961-353, REC. 01/03/1961, O.R.
- ④ 15' WIDE DRAINAGE & SEWER EASEMENT GRANTED TO THE CITY OF SAN DIEGO PER INST. NO. 1966-58668, REC. 04/07/1966, O.R.  
\*PORTION VACATED PER RESOLUTION NO. \_\_\_\_\_ (SEE CITY DWG NO. S 42400-D)
- ⑤ 6' WIDE PIPE LINE EASEMENT GRANTED TO THE CITY OF SAN DIEGO PER INST. NO. 1967-154832, REC. 10/06/1967, O.R.  
VACATED PER RESOLUTION NO. \_\_\_\_\_ (SEE CITY DWG NO. 42400-D)

**NON-PLOTTABLE EXISTING EASEMENTS**

- PUBLIC UTILITIES, INGRESS AND EGRESS EASEMENT GRANTED TO SAN DIEGO GAS & ELECTRIC COMPANY PER INST. NO. 1983-271165 RECORDED 08/04/1983, O.R.



**PROJECT DESIGN CONSULTANTS**  
 Planning | Landscape Architecture | Engineering | Survey  
 701 B Street, Suite 800 San Diego, CA 92101  
 619.235.6471 Tel 619.234.0349 Fax

**STREET VACATION WITH ACCESS & VARIOUS UTILITY EASEMENT RESERVATIONS**

WITHIN A PORTION OF LOT 36 OF RANCHO MISSION SAN DIEGO OF PARTITION MAP SUPERIOR COURT CASE NO. 348 "JUAN M. LUCO, ET AL, VS, THE COMMERCIAL BANK OF SAN DIEGO, ET AL."

DESCRIPTION	BY	APPRVD.	DATE	FILMED
ORIGINAL	PDC	RRL	5/23	

CITY OF SAN DIEGO, CALIFORNIA  
 SHEET 2 OF 11 SHEETS  
 FOR CITY LAND SURVEYOR DATE

P.T.S. NO. 665002  
 I.O. NO. N/A  
 1840-6303  
 CCS83 COORDINATES  
 200-1743  
 LAMBERT COORDINATES  
 41985-2-B

COMPLETE

STATUS

CURVE TABLE			
CURVE	DELTA	RADIUS	LENGTH
C1	101'24.14" [101'24.14"]	230.00' 230.00'	407.06' 407.06']
C2	92'51.08" [92'51.08"]	170.00' 170.00'	275.50' 275.50']
C3	4'54.56" [3030.02']	3030.02' [3030.02']	259.94' 259.78']
C4	1'48.05" [1'48.08.5"]	8890.66' 8890.66'	279.52' 279.67']
C5	4'48.05" [449.17"]	8982.03' 8982.03'	752.69' 755.83']
C6	9'45.51" [9'46.17"]	4141.50' 4141.50'	705.78' 706.30']
C7	18'07.37" [18'07.37"]	2500.00' 2500.00'	790.94' 790.94']
C8	52.34'36" [52.34'36"]	460.00' 460.00'	422.11' 422.11']
C9	24'47.13" [24'47.13"]	1000.00' 1000.00'	432.61' 432.61']
C10	4'05.01"	290.00'	20.67'
C11	7'24.00"	4141.50'	534.90'
C12	24'47.30" [24'47.13"]	1000.00' 1000.00'	432.70' 432.61']
C13	15'24.29" [15'24.29"]	1000.00' 1000.00'	268.92' 286.92']
C14	0'27.00" [0'27.10"]	8000.00' 8000.00'	62.83' 63.22']
C15	35'10.20" [35'10.20"]	352.00' 352.00'	216.08' 216.09']
C16	3'23.53"	190.00'	11.27'
C17	4'06.20"	220.00'	15.76'
C18	9'13.42"	190.00'	30.60'
C19	9'41.23"	210.00'	35.51'
C20	86'53.37"	20.00'	30.33'
C21	23'12.09"	95.00'	38.47'
C22	32'26.13"	505.00'	285.90'
C23	12'43.17"	90.50'	20.09'
C24	37'23.41"	460.00'	300.22'

CROWN CASTLE 6' WIDE UTILITY EASEMENT @ DATA TABLE			
LINE / CURVE	DIRECTION / DELTA	RADIUS	LENGTH
L76	N13'29.19"W		13.13'
L77	N79'30.16"E		52.54'
C35	38'42.04"	75.00'	50.66'
L78	N70'23.33"E		17.56'
L79	N90'00.00"W		33.86'
C36	7'58.14"	503.50'	70.04'
L80	N82'01.46"W		38.89'

VERIZON 6' WIDE UTILITY EASEMENT @ DATA TABLE			
LINE / CURVE	DIRECTION / DELTA	RADIUS	LENGTH
L81	S14'54.52"E		3.85'
L82	S65'28.44"E		5.99'
L83	N78'19.12"E		50.11'
L84	N82'14.50"E		48.10'
C32	26'44.32"	100.00'	46.67'
L85	N55'30.18"E		45.31'
L86	N49'52.36"E		25.24'
L87	N57'53.37"E		174.33'
L88	N58'16.17"E		99.90'
L89	N59'55.21"E		35.85'
C33	11'58.03"	250.00'	52.22'
L90	N71'53.23"E		27.14'
C34	18'06.37"	550.00'	173.85'
L91	S90'00.00"E		24.76'

AT&T, VERIZON, SAN DIEGO GAS & ELECTRIC COMPANY, LEVEL 3, KINDER MORGAN & CROWN CASTLE 31' WIDE ACCESS EASEMENT @ DATA TABLE			
LINE / CURVE	DIRECTION / DELTA	RADIUS	LENGTH
L66	N76'30.41"E		140.85'
C28	22'53.34"	110.50'	44.15'
L67	N57'33.47"E		338.10'
C29	32'26.13"	489.50'	277.12'
L68	N90'00.00"W		33.60'

SAN DIEGO GAS & ELECTRIC 6' WIDE UTILITY EASEMENT @ DATA TABLE			
LINE / CURVE	DIRECTION / DELTA	RADIUS	LENGTH
L69	N13'58.18"W		6.56'
L70	N82'12.28"E		30.74'
L71	N76'52.39"E		48.28'
L72	N70'17.30"E		38.62'
L73	N65'25.27"E		13.16'
C30	20'57.03"	98.00'	35.83'
L74	N57'33.47"E		338.10'
C31	32'26.13"	502.00'	284.20'
L75	N90'00.00"E		33.83'

LEVEL 3 6' WIDE UTILITY EASEMENT @ DATA TABLE			
LINE / CURVE	DIRECTION / DELTA	RADIUS	LENGTH
L60	N13'29.19"W		57.35'
L61	N77'48.20"E		104.03'
L62	N64'12.16"E		65.81'
L63	N57'38.02"E		395.04'
L64	N26'31.46"W		30.96'
C25	90'17.11"	3.00'	4.73'
C26	10'14.43"	447.20'	79.97'
L65	N74'00.08"E		17.17'
C27	19'12.07"	509.00'	170.58'

RADIAL TABLE		
RADIAL	DIRECTION	RADIUS
R1	N12'46.23"W	8982.03'
R2	N18'26.46"W [N18'24.49"W]	8000.00' 8000.00']
R3	S91'4.04"E	95.00'

**PROJECT DESIGN CONSULTANTS**  
 Planning | Landscape Architecture | Engineering | Survey  
 701 B Street, Suite 800 San Diego, CA 92101  
 619.236.6471 Tel 619.234.0349 Fax

## STREET VACATION WITH ACCESS & VARIOUS UTILITY EASEMENT RESERVATIONS

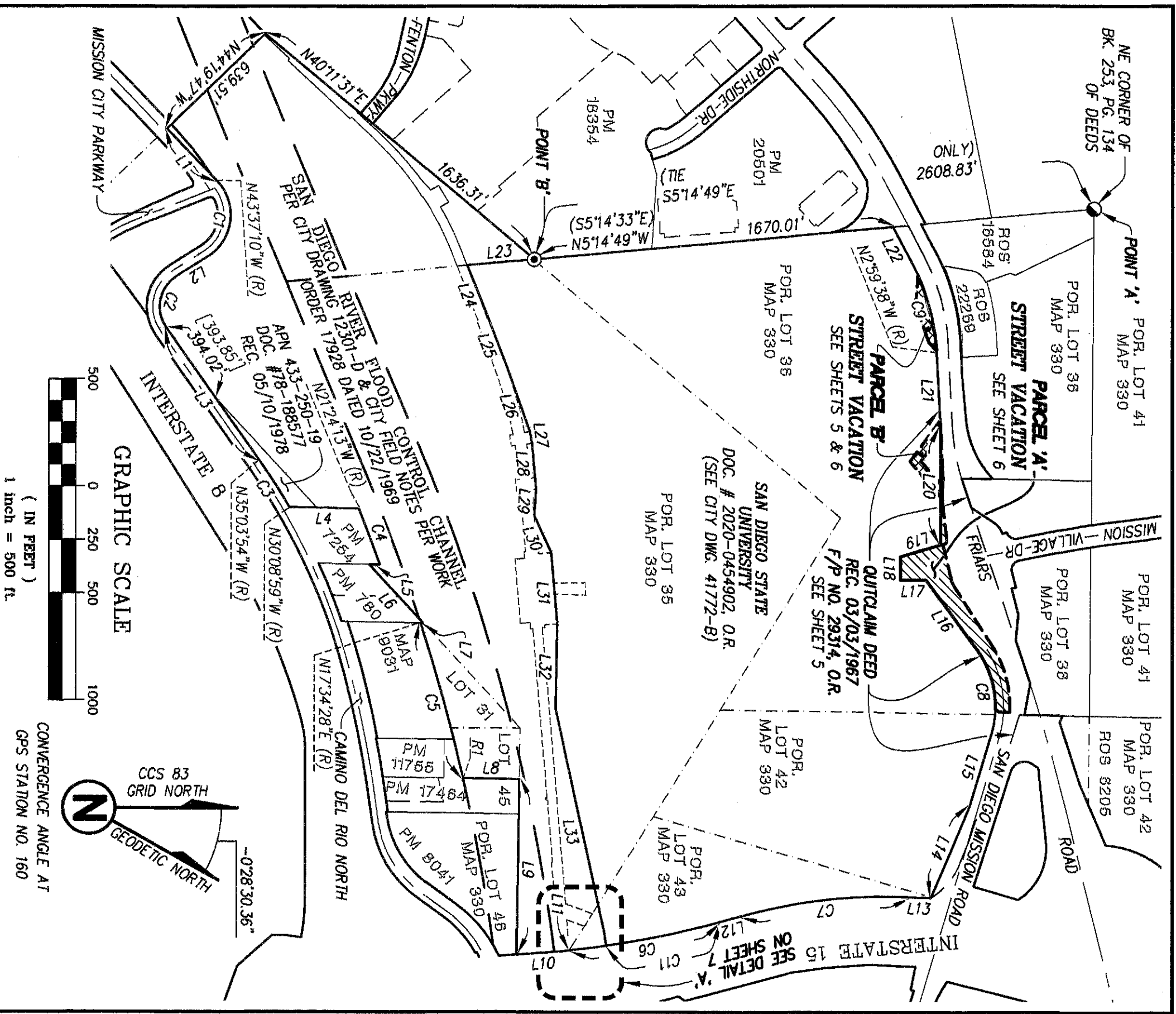
WITHIN A PORTION OF LOT 36 OF RANCHO MISSION SAN DIEGO OF PARTITION MAP SUPERIOR COURT CASE NO. 348 "JUAN M. LUCCO, ET AL, VS, THE COMMERCIAL BANK OF SAN DIEGO, ET AL"

DESCRIPTION	BY	APPRVD.	DATE	FILMED
ORIGINAL	PDC	PAK	6/23	
CITY OF SAN DIEGO, CALIFORNIA				
SHEET 3 OF 11 SHEETS				
<i>Alar &amp; Py</i>				
FOR CITY LAND SURVEYOR				
<i>8/1/2021</i>				
DATE				
P.T.S. NO. 665002				
I.O. NO. N/A				
1840-6303				
CCS83 COORDINATES				
200-1743				
LAMBERT COORDINATES				

**COMPLETE**

STATUS

41985-3-B



**PROJECT DESIGN CONSULTANTS**  
 Planning | Landscape Architecture | Engineering | Survey  
 701 B Street, Suite 800 San Diego, CA 92101  
 619.236.6471 Tel 619.234.0349 Fax

**STREET VACATION WITH RESERVATIONS  
 ACCESS & VARIOUS UTILITY EASEMENT**

WITHIN A PORTION OF LOT 36 OF RANCHO MISSION SAN DIEGO OF PARTITION MAP SUPERIOR COURT CASE NO. 348 "JUAN M LUJO, ET AL, VS, THE COMMERCIAL BANK OF SAN DIEGO, ET AL"

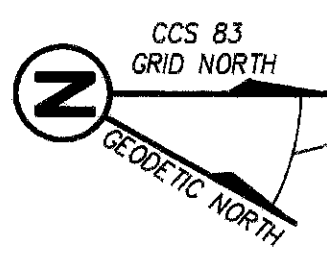
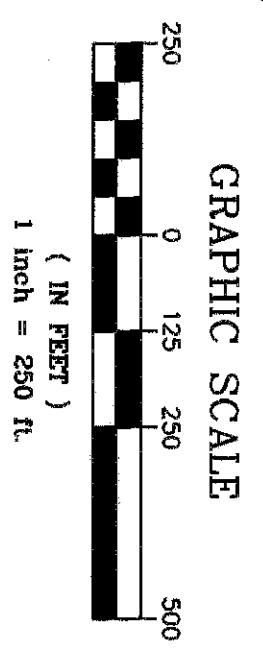
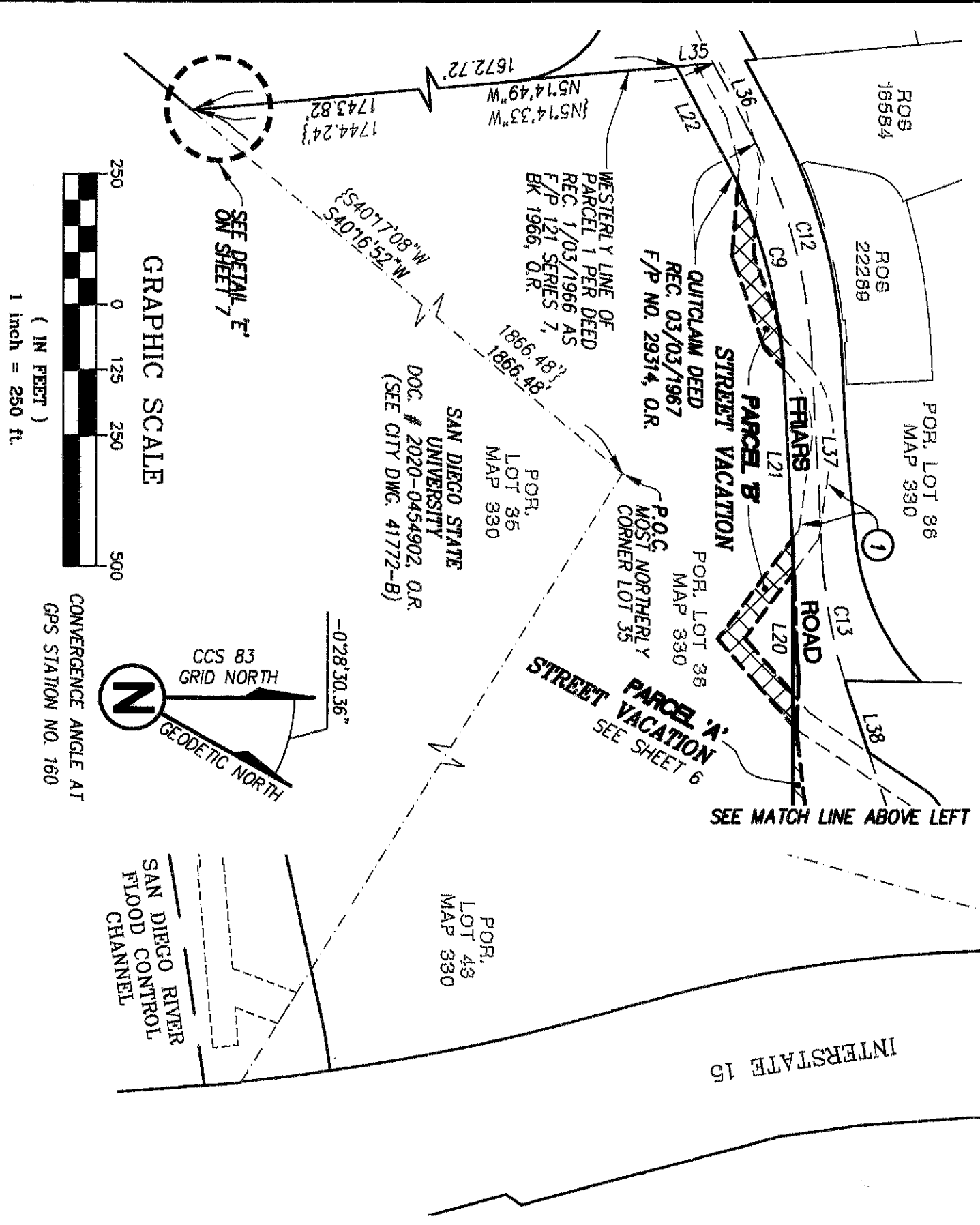
DESCRIPTION	BY	APPRVD.	DATE	FILMED
ORIGINAL	PDC	ral	5/13	

CITY OF SAN DIEGO, CALIFORNIA  
 SHEET 4 OF 11 SHEETS  
 FOR CITY LAND SURVEYOR DATE

P.T.S. NO. 665002  
 I.O. NO. N/A  
 1840-6303  
 CCS83 COORDINATES  
 200-1743  
 LAMBERT COORDINATES

COMPLETE STATUS

41985-4-B



**PROJECT DESIGN CONSULTANTS**  
 Planning | Landscape Architecture | Engineering | Survey  
 701 B Street, Suite 800 San Diego, CA 92101  
 619.236.6471 Tel 619.234.0349 Fax

**STREET VACATION WITH RESERVATIONS  
 ACCESS & VARIOUS UTILITY EASEMENT**

WITHIN A PORTION OF LOT 36 OF RANCHO MISSION SAN DIEGO OF PARTITION MAP SUPERIOR COURT  
 CASE NO. 348 "JUAN M LUCCO, ET AL, VS, THE COMMERCIAL BANK OF SAN DIEGO, ET AL."

DESCRIPTION	BY	APPRVD.	DATE	FILMED
ORIGINAL	PDC	PAL	6/23	

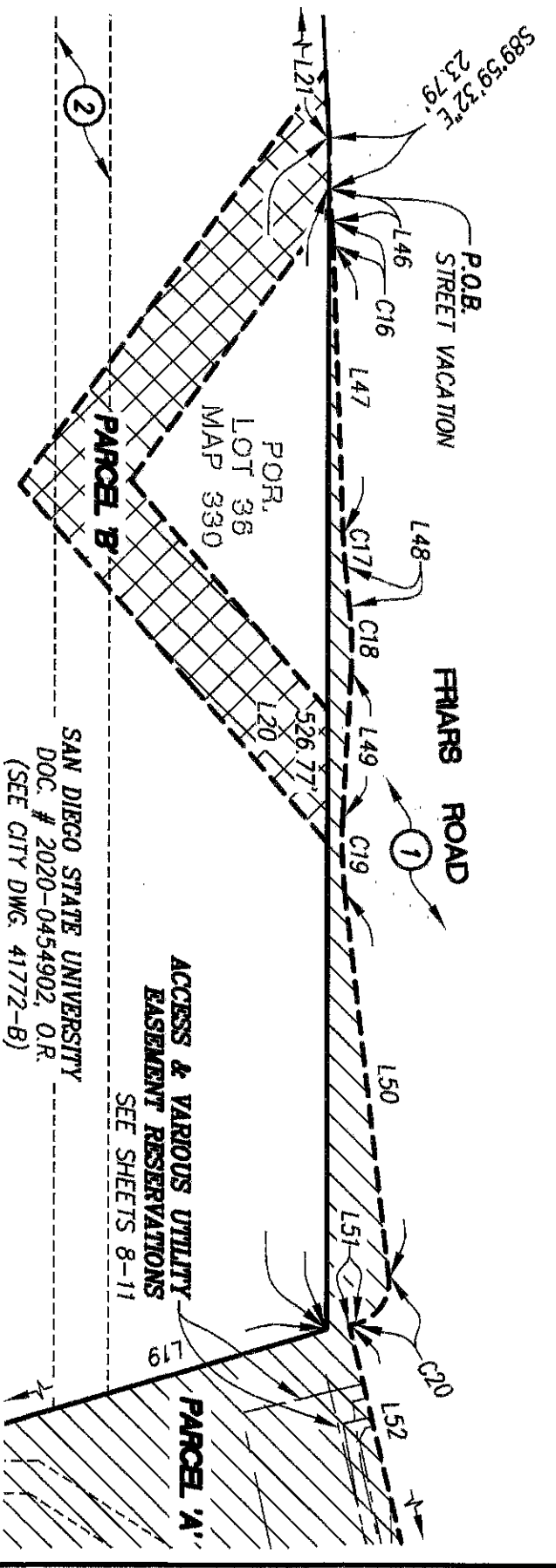
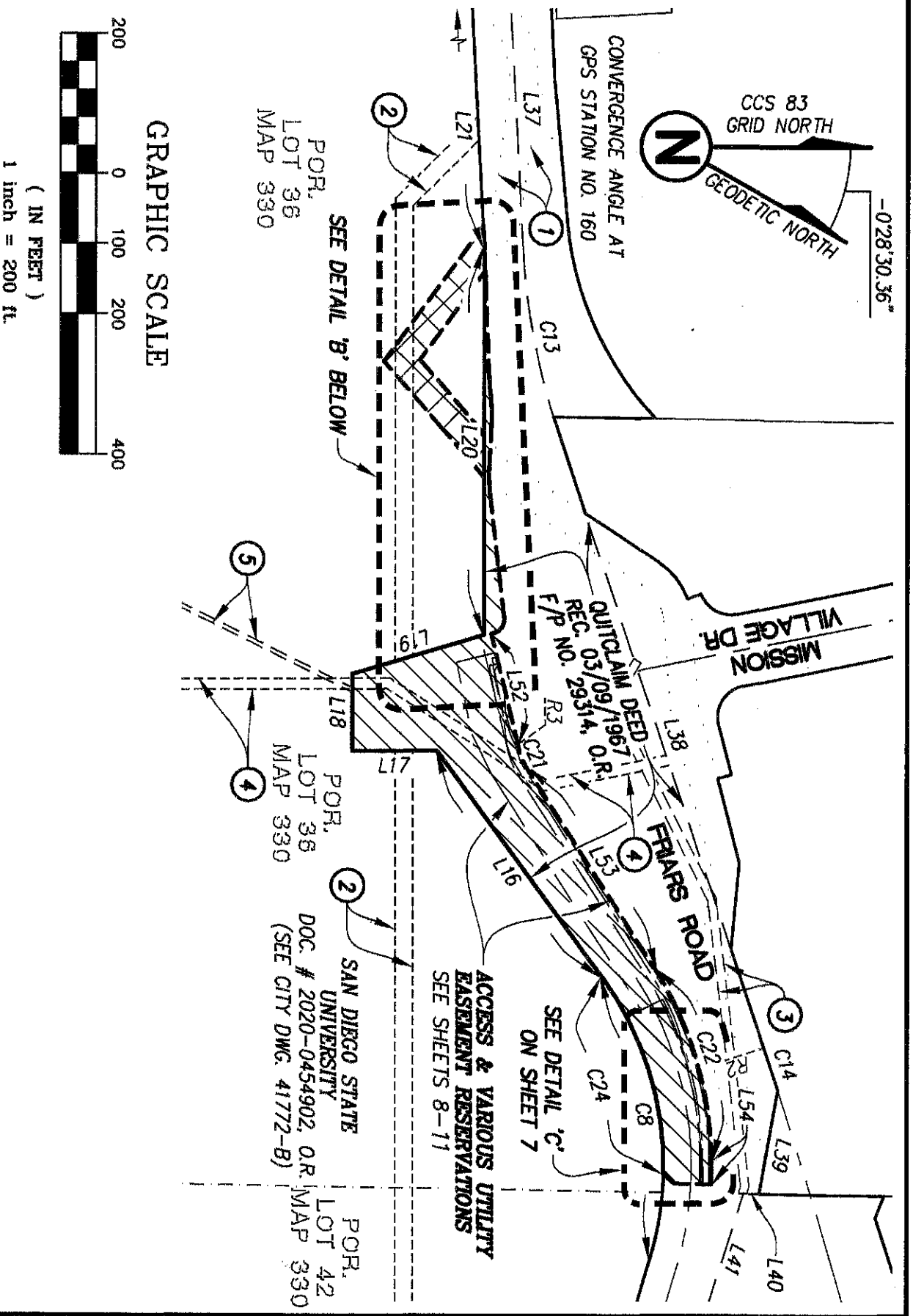
CITY OF SAN DIEGO, CALIFORNIA  
 SHEET 5 OF 11 SHEETS  
 FOR CITY LAND SURVEYOR DATE

P.T.S. NO. 665002  
 I.O. NO. N/A  
 1840-6303  
 CCS83 COORDINATES  
 200-1743  
 LAMBERT COORDINATES

COMPLETE STATUS

41985-5-B

P:\4284\_30\Maping\Plate\3--Sheet Frims Street Vacation\4284\_30\_B--Sheet\_frimssRd--StVacation\_Sht5.dwg  
 Aug 03, 2021 7:46am



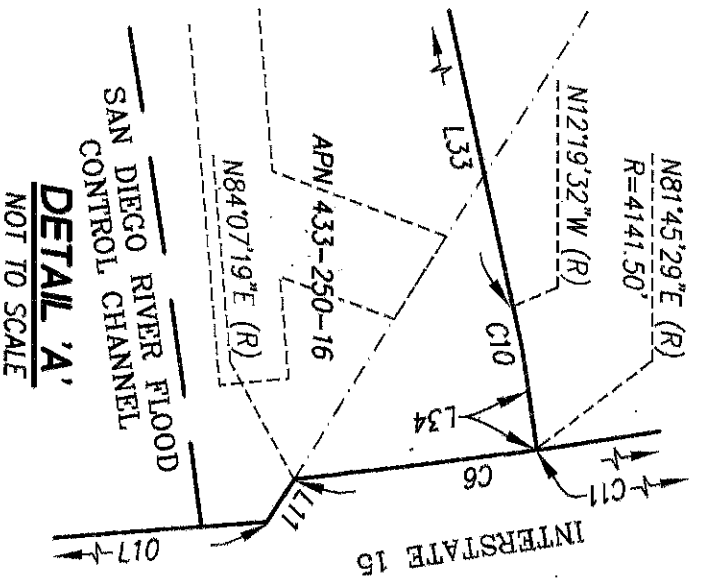
**PROJECT DESIGN CONSULTANTS**  
 Planning | Landscape Architecture | Engineering | Survey  
 701 B Street, Suite 800 San Diego, CA 92101  
 619.236.6471 Tel 619.234.0349 Fax

**STREET VACATION WITH VARIOUS UTILITY EASEMENT RESERVATIONS**  
 WITHIN A PORTION OF LOT 36 OF RANCHO MISSION SAN DIEGO OF PARTITION MAP SUPERIOR COURT CASE NO. 348 "JUAN M. LUCCO, ET AL, VS, THE COMMERCIAL BANK OF SAN DIEGO, ET AL."

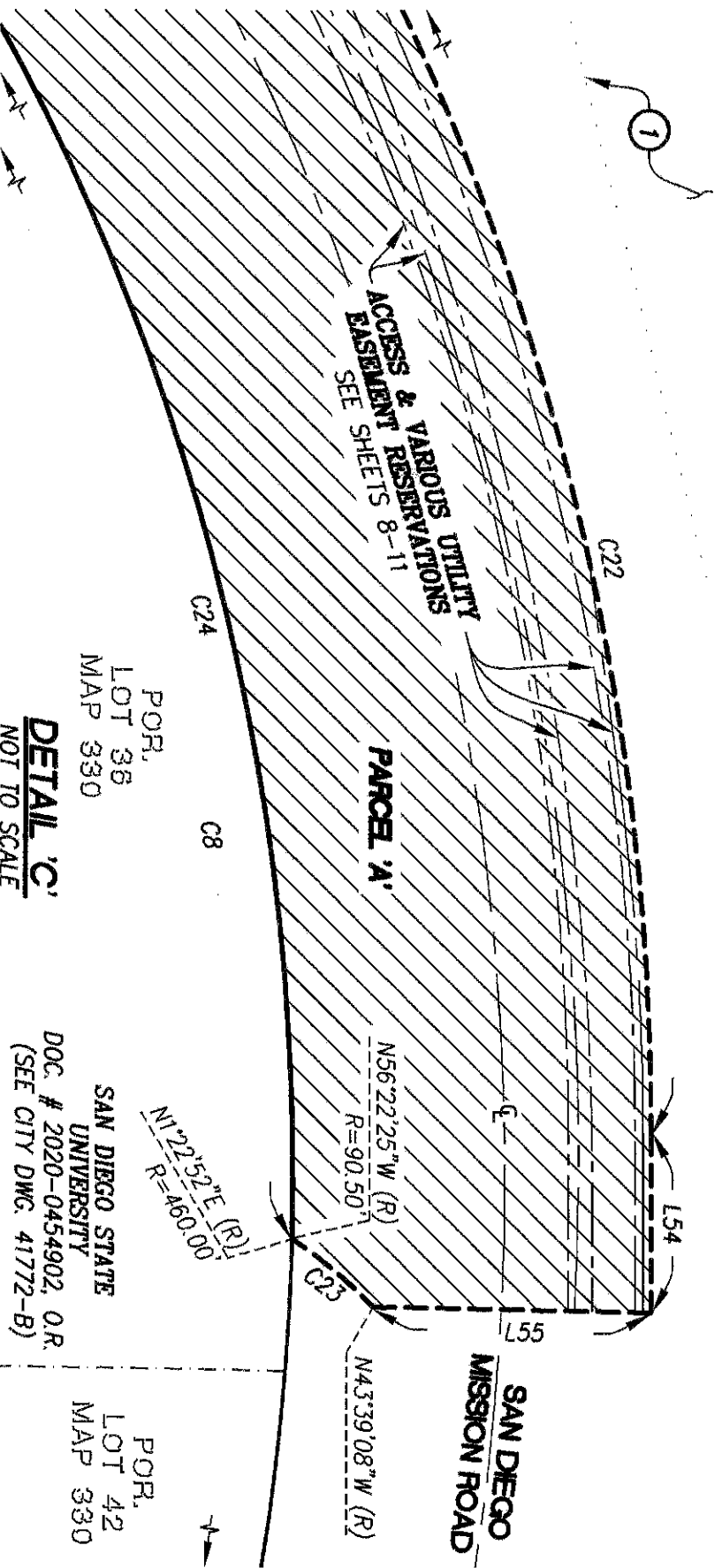
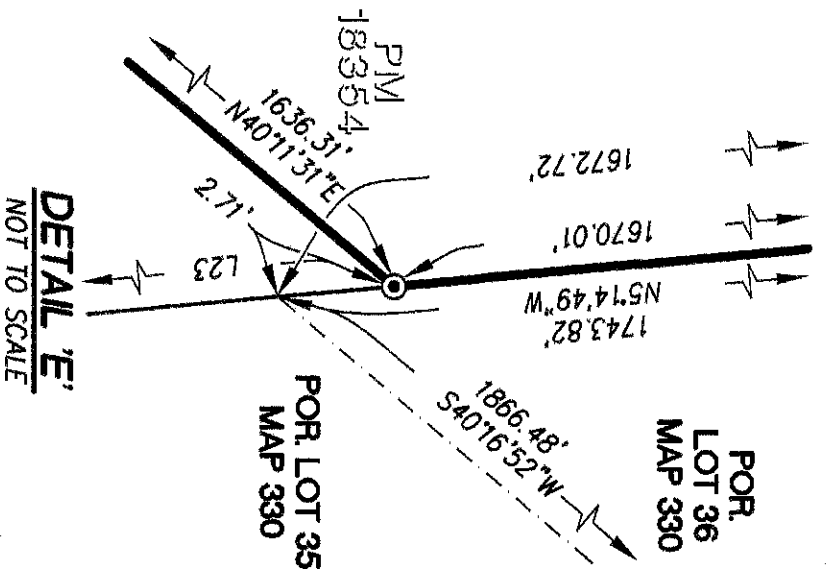
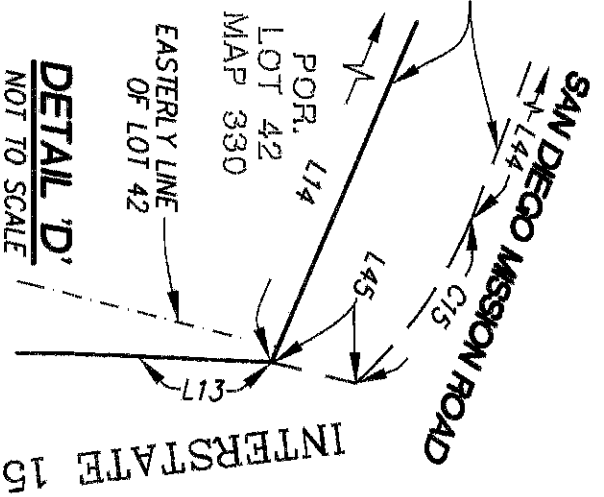
DESCRIPTION	BY	APPRVD.	DATE	FILMED
ORIGINAL	PDC	RAL	5/23	

<b>COMPLETE</b>	STATUS
CITY OF SAN DIEGO, CALIFORNIA SHEET 6 OF 11 SHEETS FOR CITY LAND SURVEYOR DATE P.T.S. NO. 665002 I.O. NO. N/A 1840-6303 CCS83 COORDINATES 200-1743 LAMBERT COORDINATES 41985-6-B	

P:\4264.30\Mapping\Plans\B--Sheet Friars Street Vacation\4264.30\_B--Sheet\_FriarsRd--StVacation\_Shg-7.dwg  
 Aug 03, 2021 7:45am



QUITCLAIM DEED  
REC. 03/03/1967  
F/P NO. 29314, O.R.



POR,  
LOT 36  
MAP 330  
**DETAIL 'C'**  
NOT TO SCALE

POR,  
LOT 42  
MAP 330  
SAN DIEGO STATE  
UNIVERSITY  
DOC. # 2020-0454902, O.R.  
(SEE CITY DWG. 41772-B)



**PROJECT DESIGN CONSULTANTS**  
Planning | Landscape Architecture | Engineering | Survey  
701 B Street, Suite 800 San Diego, CA 92101  
619.236.6471 Tel 619.234.0349 Fax

**STREET VACATION WITH RESERVATIONS  
ACCESS & VARIOUS UTILITY EASEMENT**

WITHIN A PORTION OF LOT 36 OF RANCHO MISSION SAN DIEGO OF PARTITION MAP SUPERIOR COURT  
CASE NO. 348 "JUAN M. LUCCO, ET AL, VS, THE COMMERCIAL BANK OF SAN DIEGO, ET AL."

DESCRIPTION	BY	APPRVD.	DATE	FILMED
ORIGINAL	PDC	RAL	6/23	

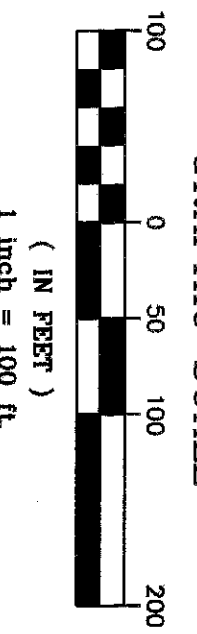
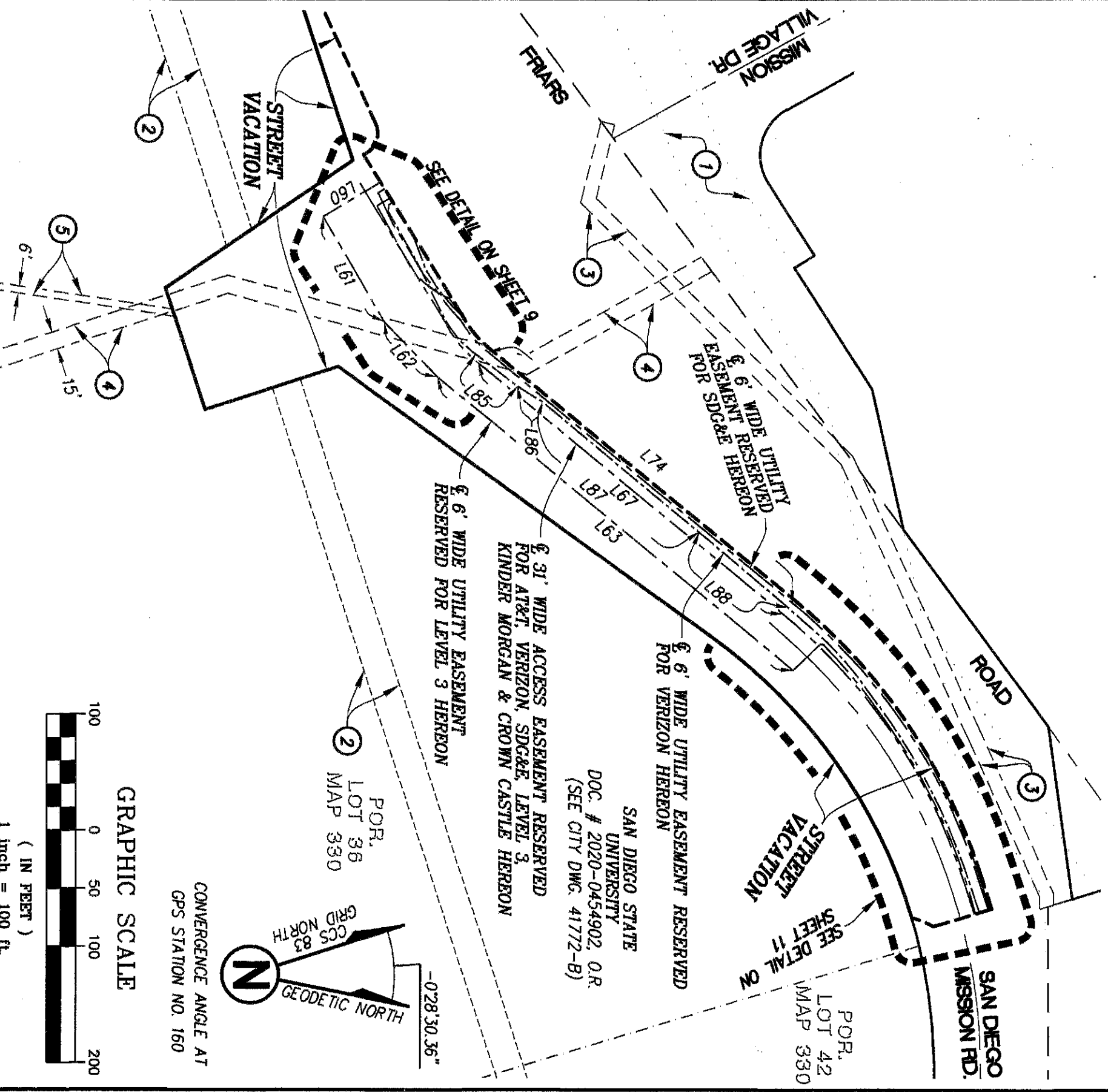
CITY OF SAN DIEGO, CALIFORNIA  
SHEET 7 OF 11 SHEETS  
*Fuller & Py*  
FOR CITY LAND SURVEYOR DATE *8/17/2021*

P.T.S. NO. 665002  
I.O. NO. N/A  
1840-6303  
CCS83 COORDINATES  
200-1743  
LAMBERT COORDINATES

**COMPLETE**

STATUS

41985-7-B



**PROJECT DESIGN CONSULTANTS**  
 Planning | Landscape Architecture | Engineering | Survey  
 701 B Street, Suite 800 San Diego, CA 92101  
 619.236.6471 Tel 619.234.0349 Fax

**STREET VACATION WITH RESERVATIONS**  
**ACCESS & VARIOUS UTILITY EASEMENT**

WITHIN A PORTION OF LOT 36 OF RANCHO MISSION SAN DIEGO OF PARTITION MAP SUPERIOR COURT CASE NO. 348 "JUAN M. LUCCO, ET AL, VS. THE COMMERCIAL BANK OF SAN DIEGO, ET AL"

DESCRIPTION	BY	APPRVD.	DATE	FILMED
ORIGINAL	PDC	FAL	5/23	

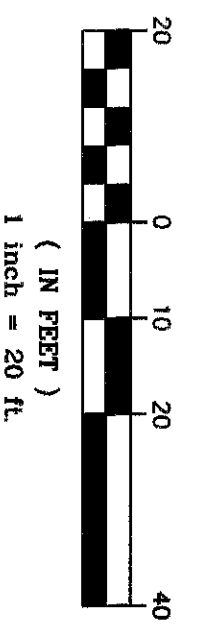
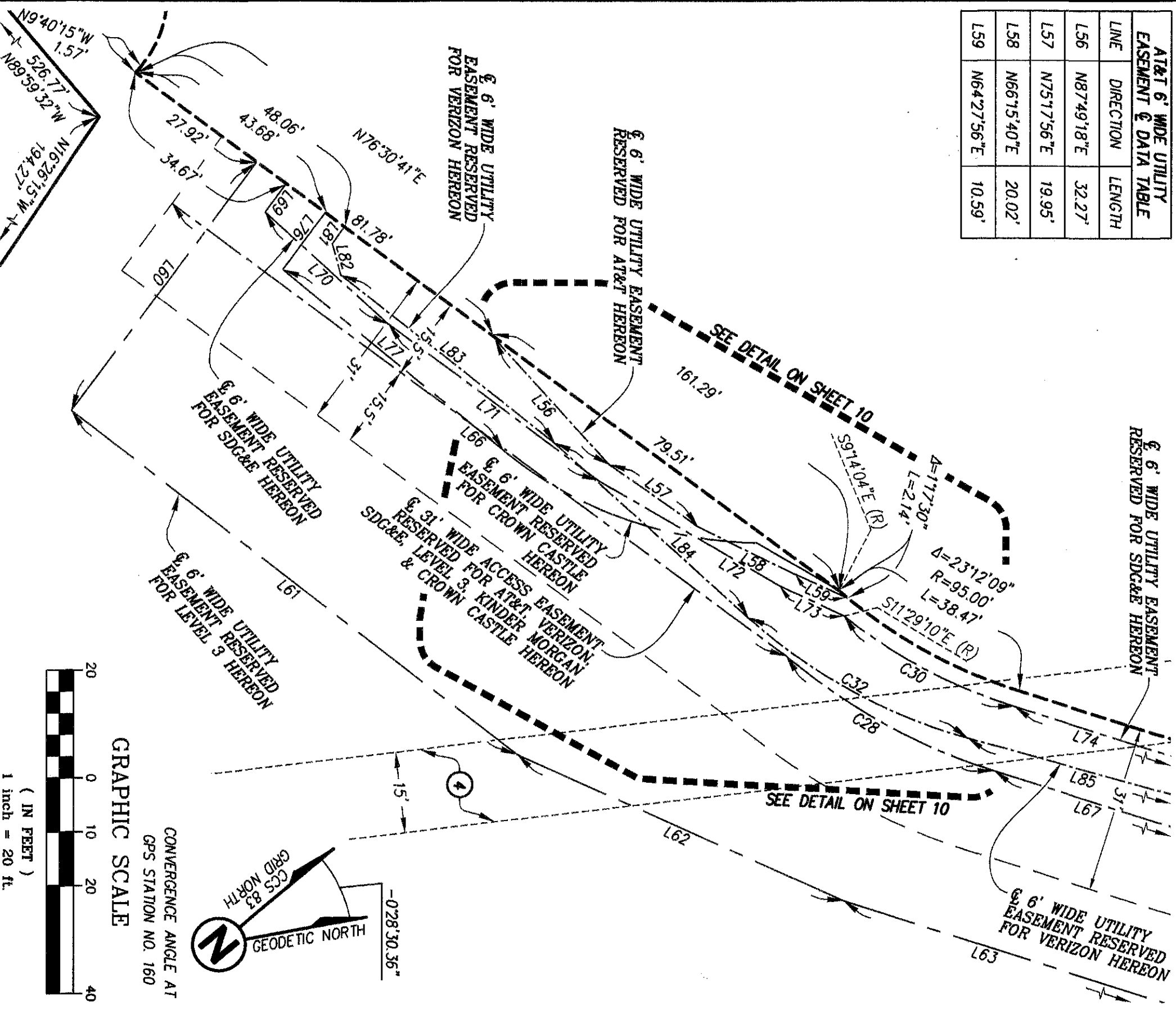
CITY OF SAN DIEGO, CALIFORNIA  
 SHEET 8 OF 11 SHEETS  
 FOR CITY LAND SURVEYOR DATE

P.T.S. NO. 665002  
 I.O. NO. N/A  
 1840-6303  
 CCS83 COORDINATES  
 200-1743  
 LAMBERT COORDINATES  
 41985-8-B

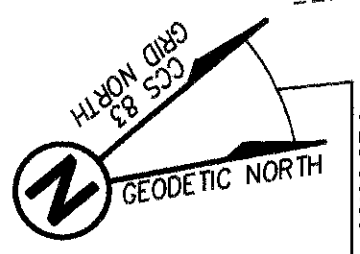
P:\4264\_30\Mapping\Plate\B--Sheet Friars Street Vacation\4264\_30\_B--Sheet\FriarsRd--StVacation\_S8B.dwg  
 Aug 04, 2021 7:43am



AT&T 6' WIDE UTILITY EASEMENT & DATA TABLE		
LINE	DIRECTION	LENGTH
L56	N87°49'18"E	32.27'
L57	N75°17'56"E	19.95'
L58	N66°15'40"E	20.02'
L59	N64°27'56"E	10.59'



CONVERGENCE ANGLE AT  
GPS STATION NO. 160



**PROJECT DESIGN CONSULTANTS**  
 Planning | Landscape Architecture | Engineering | Survey  
 701 B Street, Suite 800 San Diego, CA 92101  
 619.236.6471 Tel 619.234.0349 Fax

**STREET VACATION WITH RESERVATIONS**  
**ACCESS & VARIOUS UTILITY EASEMENT**

WITHIN A PORTION OF LOT 36 OF RANCHO MISSION SAN DIEGO OF PARTITION MAP SUPERIOR COURT CASE NO. 348 "JUAN M. LUCCO, ET AL, VS, THE COMMERCIAL BANK OF SAN DIEGO, ET AL."

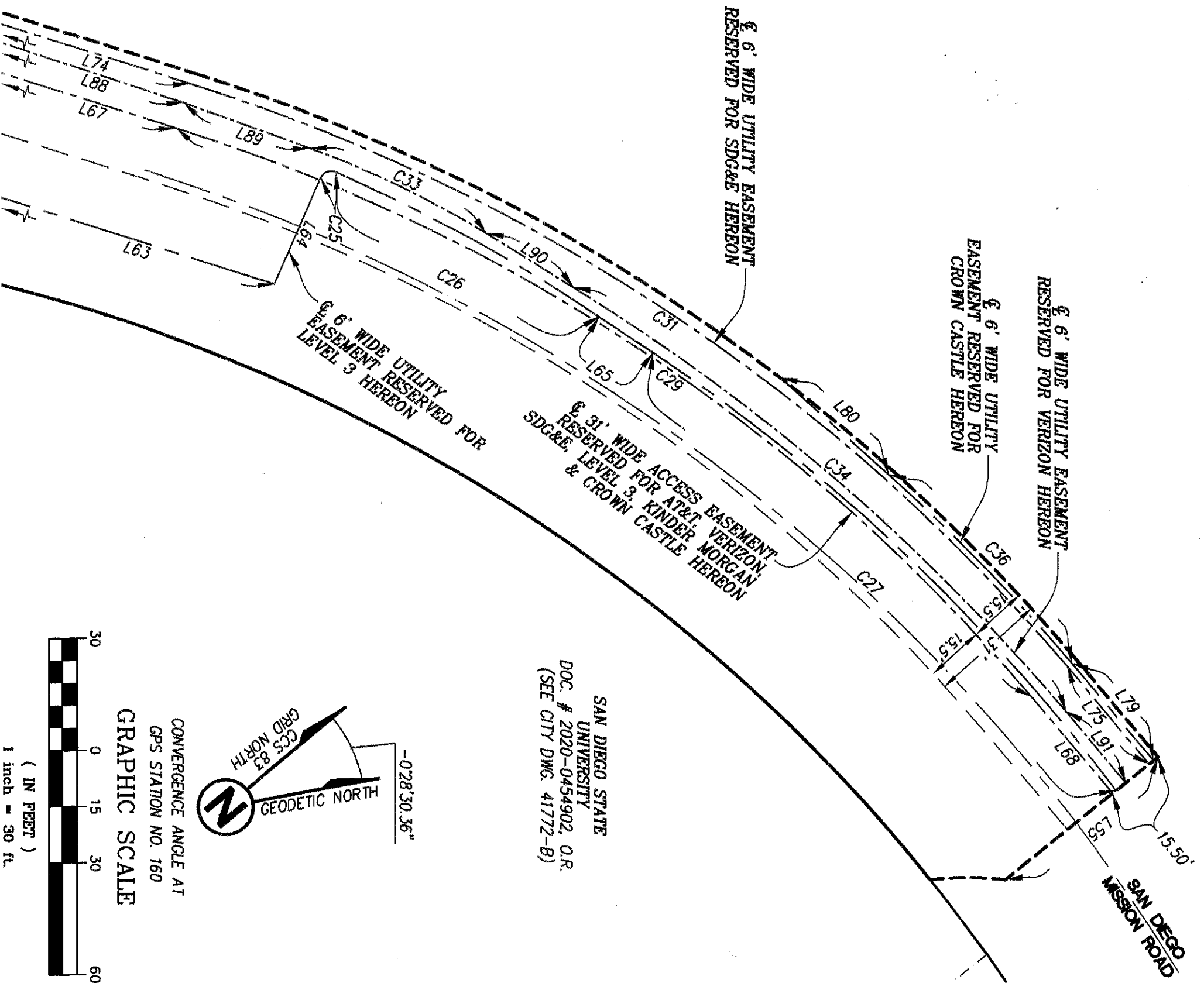
DESCRIPTION	BY	APPRVD	DATE	FILMED
ORIGINAL	PDC	FR	5/23	

CITY OF SAN DIEGO, CALIFORNIA  
 SHEET 9 OF 11 SHEETS  
*Valle R. & Py*  
 FOR CITY LAND SURVEYOR DATE *8/17/2021*

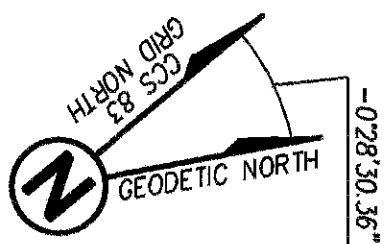
P.T.S. NO. 665002  
 I.O. NO. N/A  
 1840-6303  
 CCS83 COORDINATES  
 200-1743  
 LAMBERT COORDINATES

STATUS **COMPLETE**



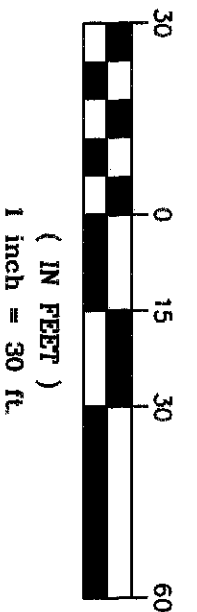


SAN DIEGO STATE  
UNIVERSITY  
DOC. # 2020-0454902, O.R.  
(SEE CITY DWG. 41772-B)



CONVERGENCE ANGLE AT  
GPS STATION NO. 160

GRAPHIC SCALE



**PROJECT DESIGN CONSULTANTS**  
Planning | Landscape Architecture | Engineering | Survey  
701 B Street, Suite 800 San Diego, CA 92101  
619.236.6471 Tel 619.234.0349 Fax

## STREET VACATION WITH RESERVATIONS ACCESS & VARIOUS UTILITY EASEMENTS

WITHIN A PORTION OF LOT 36 OF RANCHO MISSION SAN DIEGO OF PARTITION MAP SUPERIOR COURT  
CASE NO. 348 "JUAN M. LUCO, ET AL, VS, THE COMMERCIAL BANK OF SAN DIEGO, ET AL"

DESCRIPTION	BY	APPRVD.	DATE FILMED
ORIGINAL	PDC	FAL	5/23

COMPLETE

STATUS

CITY OF SAN DIEGO, CALIFORNIA  
SHEET 11 OF 11 SHEETS  
*ALL R. R. P.*  
FOR CITY LAND SURVEYOR DATE 8/17/2021

P.T.S. NO. 665002  
I.O. NO. N/A  
1840-6303  
CCS83 COORDINATES  
200-1743  
LAMBERTI COORDINATES  
41985-11-B

P:\4284\_30\Mapping\Plots\B-Sheet Firms Street Vacation\4284\_30\_B-Sheet\_FirmsRd-StVacation\_Sht11.dwg  
Aug 01, 2021 7:41am