

**LEGEND**

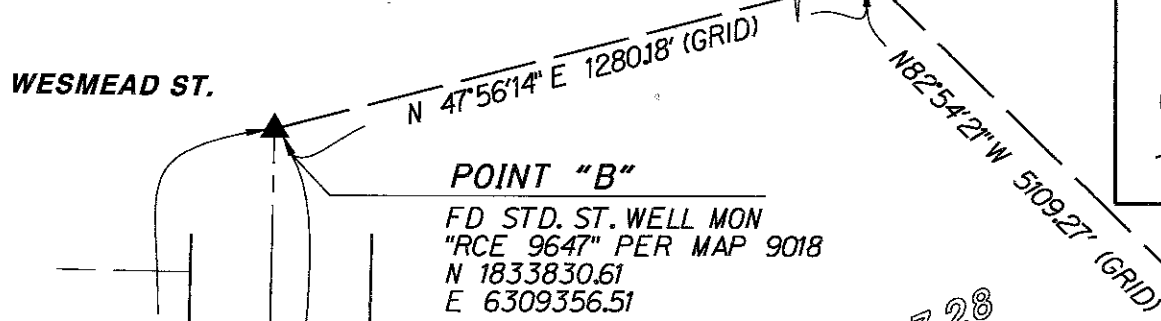
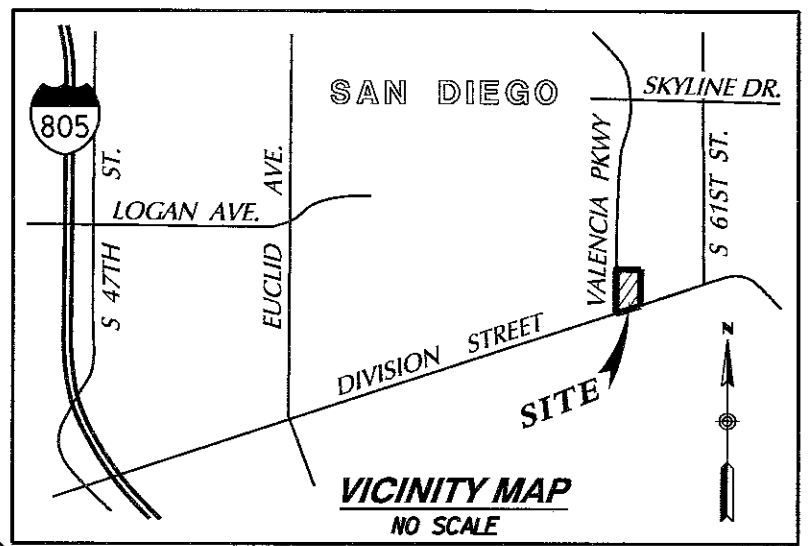
PROPOSED WATER EASEMENT, ACQUIRED  
120± SQ. FT.

**P.O.B. POINT OF BEGINNING**

- R1 RECORD DATA PER INST. REC'D 04-23-1963  
AS DOC. 69530 (CITY DWG. 14861-AL)
- R2 RECORD DATA PER MAP 9018
- DD1 RECORD DATA PER DEED REC'D 12/27/2018  
AS DOC. 2018-0530344, O.R.

**EXHIBIT "B"**

FD L&D IN SW  
"RCE 9416" PER  
ROS 14492 (STA 1187)  
N 1834688.26  
E 6310306.93



**POINT "B"**  
FD STD. ST. WELL MON  
"RCE 9647" PER MAP 9018  
N 1833830.61  
E 6309356.51

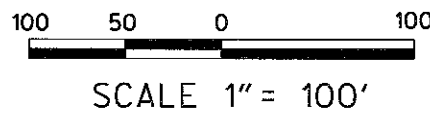
**BASIS OF BEARINGS**

THE BASIS OF BEARINGS FOR THIS PLAT IS THE CALIF. COORDINATE SYSTEM, CCS83, ZONE 6, EPOCH 1991.35 AND IS DETERMINED BY G.P.S. MEASUREMENTS TAKEN ON JULY 16, 2019 AT POINTS 'A' & 'B' AS SHOWN HEREON. POINTS 'A' & 'B' WERE ESTABLISHED FROM G.P.S. STATION 179 AND G.P.S. STATION 1187 PER ROS 14492. THE BEARING FROM POINT 'A' TO POINT 'B' IS N 1°09'21"E.

QUOTED BEARINGS FROM REFERENCE MAPS/DEEDS MAY OR MAY NOT BE IN TERMS OF SAID SYSTEM.

THE COMBINED GRID FACTOR AT POINT 'A' IS 1.000008329. GRID DISTANCE = GROUND DISTANCE X COMBINED GRID FACTOR. ELEVATION AT POINT 'A' IS 276.36 NGVD29

FD 2.5" DISK IN TC  
"GPS 0022 1992"  
PER ROS 14492  
(STA 179)  
N 1834057.26  
E 6315377.09



**REFERENCE DRAWINGS**

- CITY DWG. 41795-D, 41796-B
- MAP 159
- ROS 728

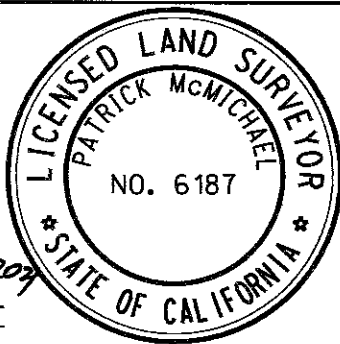
**EASEMENT LEGEND**

- ① CITY PUBLIC STREET REC'D 07-12-1927 IN BK 1356, PG 219, O.R. (CITY DWG. 9491-B)
- ② CITY PUBLIC ST. R/2 REC'D 02-27-1947 IN BK 2338, PG 311, O.R. (CITY DWG. 3193-B)
- ③ INTENTIONALLY OMITTED
- ④ CENTERLINE OF 12' WIDE SDG&E EASEMENT REC'D 06-22-1970 AS DOC. 107925, O.R.
- ⑤ CITY PUBLIC STREET REC'D 04-23-1963 AS DOC. 69530, O.R. (CITY DWG. 14861-AL)

**RICK**  
ENGINEERING COMPANY

5620 FRIARS ROAD  
SAN DIEGO, CA 92110  
619-291-0707  
(FAX) 619-291-4165

J. 18623-AM



*Patrick A. McMichael*  
PATRICK A. McMICHAEL, LS 6187 DATE 7-15-2021

DOCUMENT No. 2021-0526927

RECORDED 7/23/2021

**WATER EASEMENT**

OVER PORTION OF LOT 2 OF MAP NO. 159

DESCRIPTION	BY	APPROVED	DATE	FILMED	CITY OF SAN DIEGO, CALIFORNIA	PTS
ORIGINAL	REC			7-27-21	SHEET 1 OF 2 SHEET	667923
						N/A
					<i>Patrick A. McMichael</i> FOR CITY LAND SURVEYOR	1832-6307
					DATE 7/21/21	CCS 83 COORDINATES
						192-1747
						NAD 27 COORDINATES
ACQUIRED					STATUS	42003-1-B

