

ASSESSOR'S PARCEL NO'S:

452-103-66-00

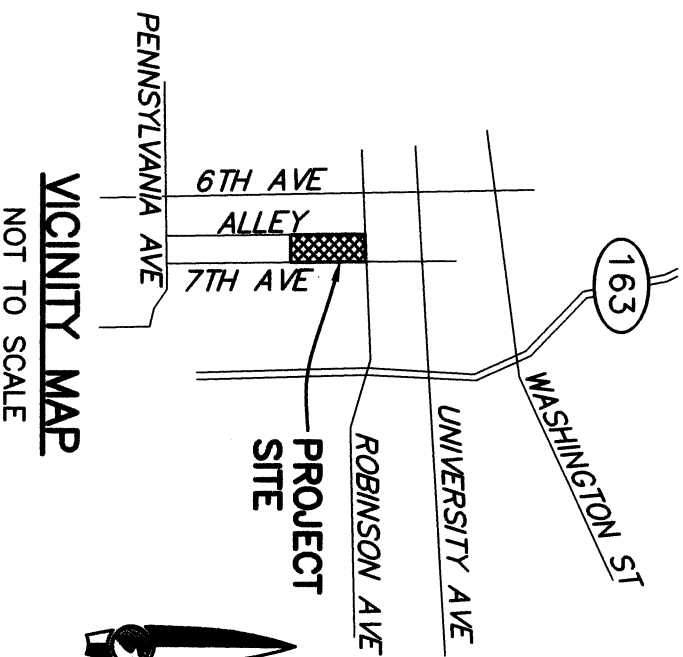
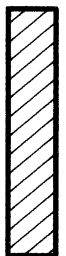
REFERENCE DRAWINGS

MAP NO. 303
 MAP NO. 15443
 PM 13052
 ROS 14162
 ROS 14492
 40437-D

LEGEND

- BOUNDARY LINE _____
 - LOT LINE _____
 - PROPOSED EASEMENT _____
 - RIGHT OF WAY _____
 - CENTER LINE _____
- INDICATES RECORD DATA PER MAP NO. 303. ()
- TRUE POINT OF BEGINNING **T.P.O.B.**
- POINT OF BEGINNING **P.O.B.**

INDICATES WATER EASEMENT
 ACQUIRED AREA 223.00 SQ



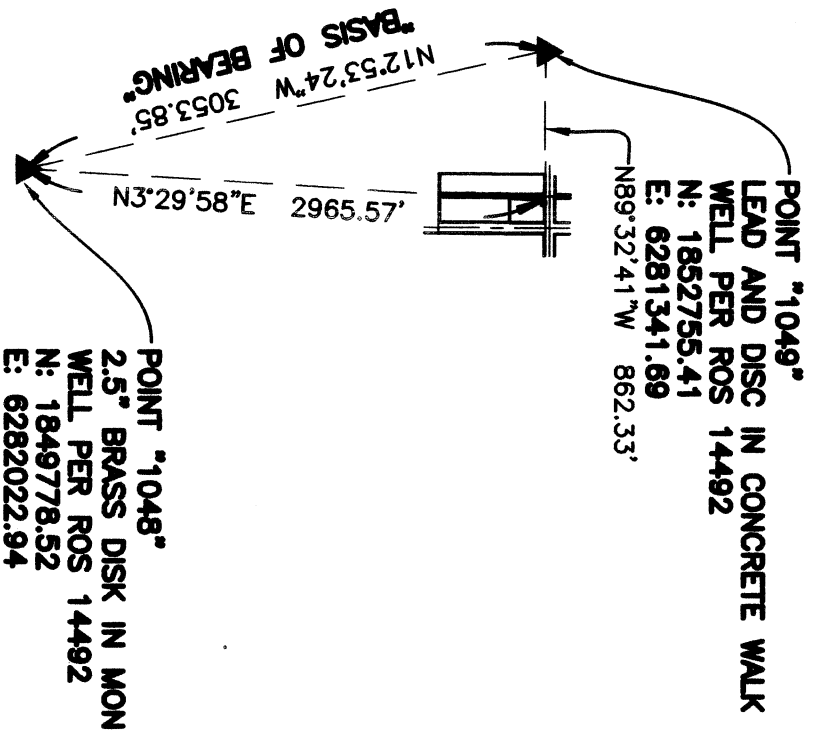
BASIS OF BEARINGS

THE BASIS OF BEARINGS FOR THIS SURVEY IS THE CALIFORNIA COORDINATE SYSTEM OF 1983 (CCS83), ZONE 6, EPOCH 1991.35, AND IS DETERMINED BY G.P.S. MEASUREMENTS TAKEN ON AUGUST 8, 2019 AND WERE ESTABLISHED FROM G.P.S. STATION #1048 AND G.P.S. STATION #1049 PER ROS 14492. THE BEARING FROM G.P.S. STATION #1048 TO G.P.S. STATION #1049 IS NORTH 12°53'24" WEST.

QUOTED BEARINGS FROM REFERENCE MAPS OR DEEDS MAY OR MAY NOT BE IN TERMS OF SAID SYSTEM.

THE COMBINED GRID FACTOR AT G.P.S. STATION #1048 IS 0.9999991.

GRID DISTANCE = GROUND DISTANCE X COMBINED SCALE FACTOR
 ELEVATION AT G.P.S. STATION 1048 IS 291.53 NGVD29.

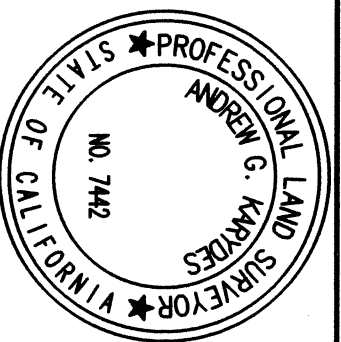


BASIS OF BEARING DETAIL

NOT TO SCALE

SAN DIEGUITO ENGINEERING
 462 STEVENS AVENUE, SUITE 305
 SOLANA BEACH, CA 92075
 (858)-345-1149

Andrew G. Karydes 1/07/2022
 ANDREW G. KARYDES, P.L.S. 7442



DOCUMENT No. 2022-0021902
 RECORDED Jan 14, 2022

WATER EASEMENT

IN A PORTION OF LOT 25, BLOCK 4 OF CRITTENDEN ADDITION, MAP NO. 303 IN THE CITY OF SAN DIEGO, COUNTY OF SAN DIEGO, STATE OF CALIFORNIA

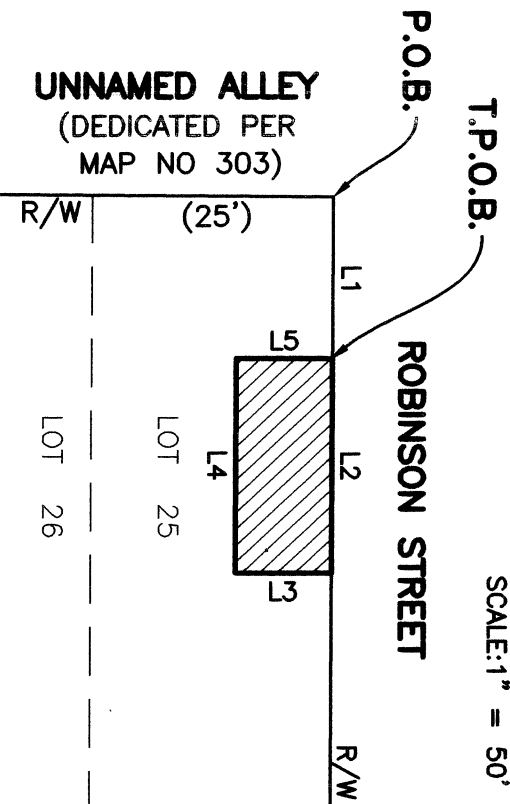
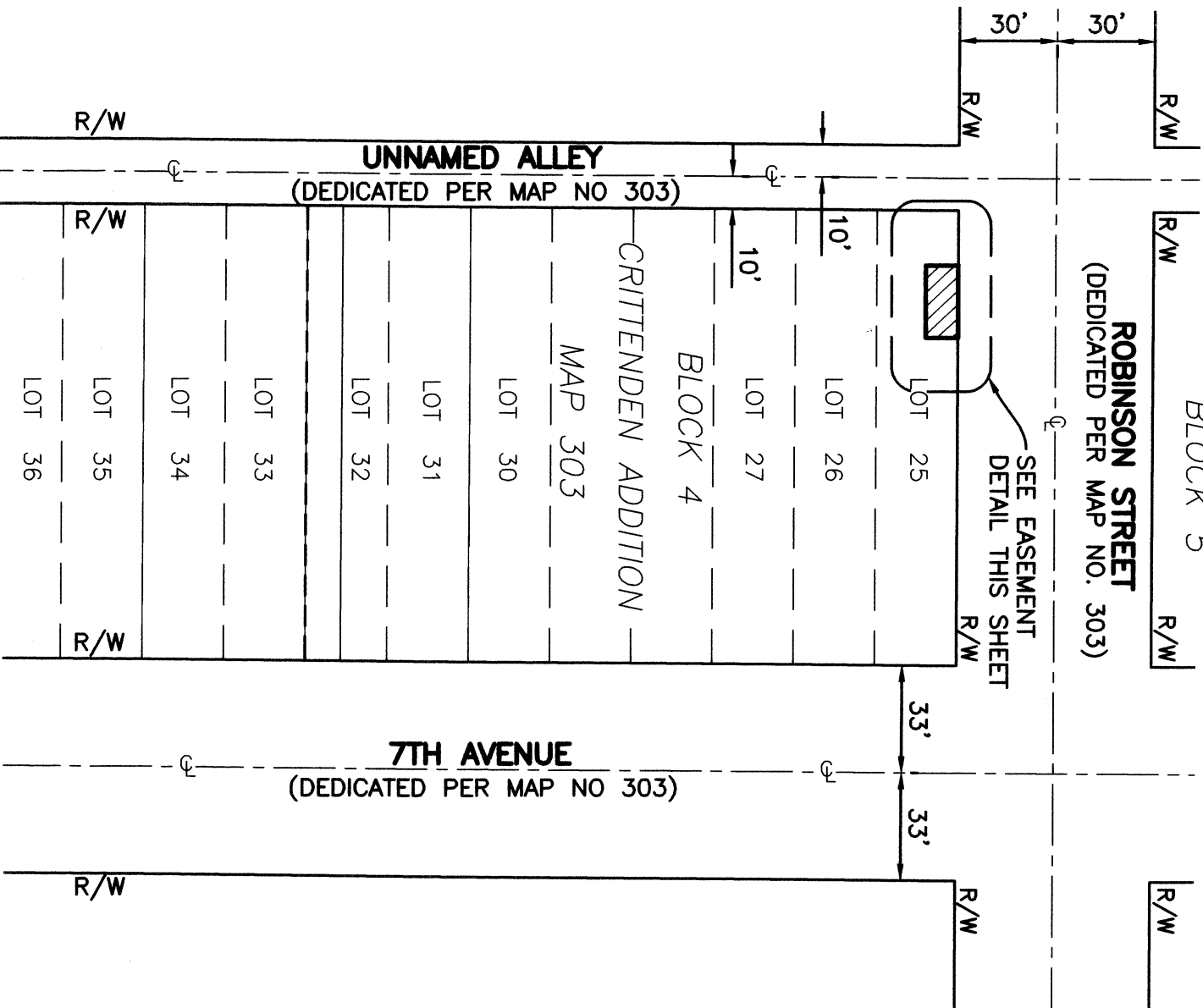
DESCRIPTION	BY	APPROVED	DATE FILMED	CITY OF SAN DIEGO, CALIFORNIA	PTS
ORIGINAL	MEM	S.O.	1/21/2022	SHEET 1 OF 2 SHEETS	666473
					I.O. N/A
					1852-6279
					CCS 83 COORDINATES
					212-1719
					NAD 27 COORDINATES
					42017-1-B

ACQUIRED

STATUS

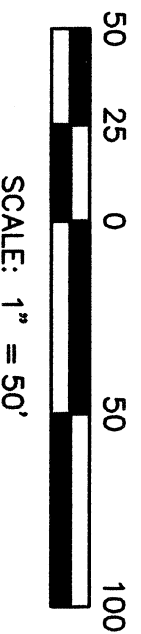
FOR CITY ENGINEER *Yuhua D. Ky* VIA DATE 1/14/2022

EXHIBIT "B"



LINE TABLE		
#	DIRECTION	LENGTH
L1	S89°45'28"E	16.82'
L2	S89°45'28"E	22.30'
L3	S0°14'32"W	10.00'
L4	N89°45'28"W	22.30'
L5	N0°14'32"E	10.00'

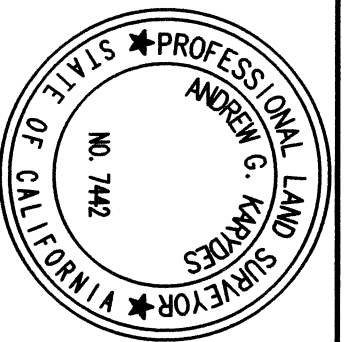
EASEMENT DETAIL
NOT TO SCALE



SAN DIEGUITO ENGINEERING
462 STEVENS AVENUE, SUITE 305
SOLANA BEACH, CA 92075
(858)-345-1149

Andrew G. Karydes
1/07/2022

ANDREW G. KARYDES, P.L.S. 7442



DOCUMENT No. 2022-0021902
RECORDED JAN 14, 2022

WATER EASEMENT

IN A PORTION OF LOT 25, BLOCK 4 OF CRITTENDEN ADDITION, MAP NO. 303 IN THE CITY OF SAN DIEGO, COUNTY OF SAN DIEGO, STATE OF CALIFORNIA

DESCRIPTION	BY	APPROVED DATE	FILMED	CITY OF SAN DIEGO, CALIFORNIA	PTS
ORIGINAL	MEM	S.O.	1/21/2022	SHEET 2 OF 2 SHEET	666473
					N/A
					1852-6279
					CCS 83 COORDINATES
					212-1719
					NAD 27 COORDINATES

ACQUIRED

STATUS

42017-2-B