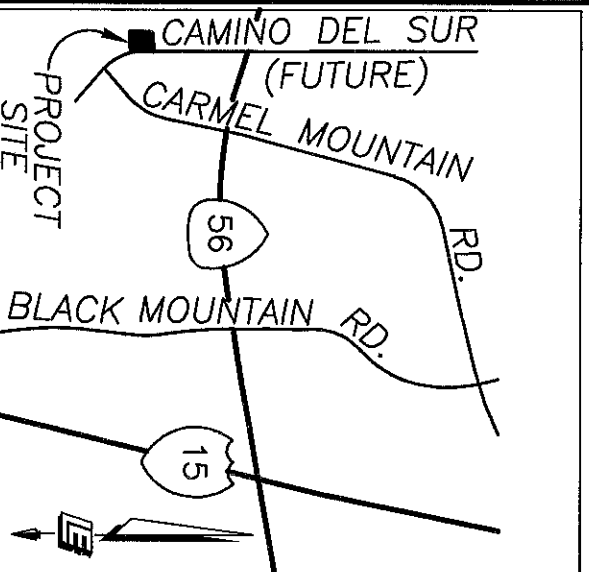


EXHIBIT "B"



BASIS OF BEARINGS

THE BASIS OF BEARINGS FOR THIS MAP IS THE WESTERLY LINE OF THE SOUTHEAST QUARTER OF THE NORTHEAST QUARTER OF THE SOUTHEAST QUARTER OF SECTION 14, T14S, R3W, SBBM. PER ROS NO. 15686, I.E. N00°58'30"E.

REFERENCE DRAWINGS

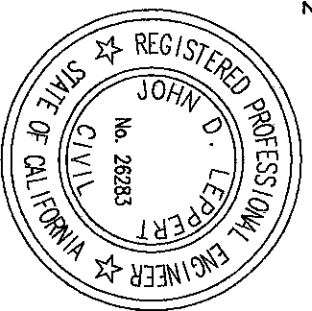
ROS NO. 15686
CITY DWG. NO. 41901-D

LEGEND

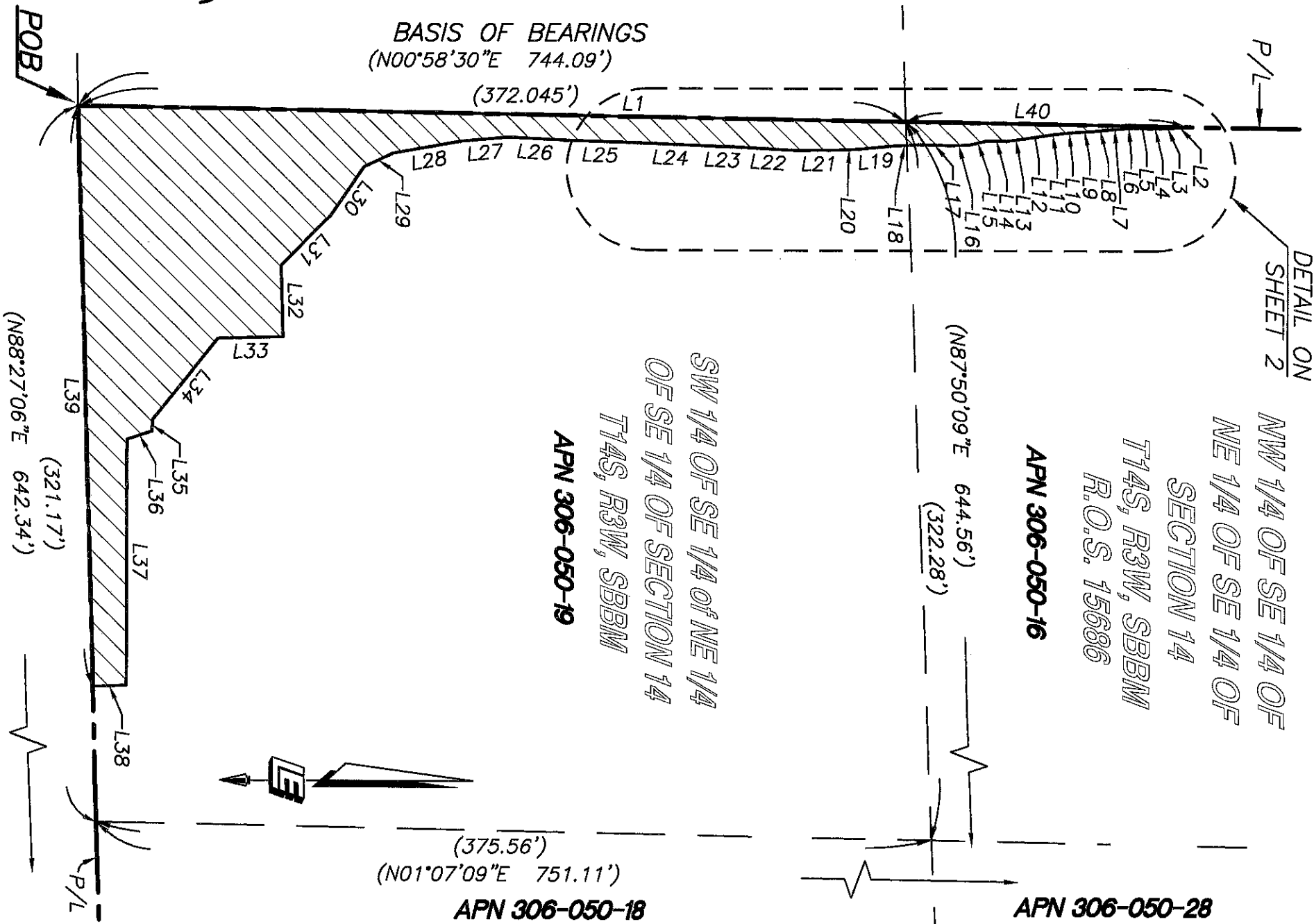
- P/L PROPERTY LINE
- POB POINT OF BEGINNING
- INDICATES COVENANT OF EASEMENT ACQUIRED, AREA = 18,738 SQ.FT. (0.430 ACRES)
- () INDICATES RECORDED DATA PER ROS NO. 15686
- PROPERTY LINE
- LOT LINE

PREPARED BY:

John D. Leppert
JOHN D. LEPPERT
R.C.E. 26283
EXP 3-31-2022
DATE 3/26/2021



Leppert Engineering CORPORATION
5190 Governor Drive, Suite 205
San Diego, Ca. 92122-2848
Phone: (858) 597-2001



COVENANT OF EASEMENT FOR THE PROTECTION OF SENSITIVE BIOLOGICAL RESOURCES ON LANDS THAT ARE NOT INCLUDED WITHIN THE MULTIPLE SPECIES CONSERVATION PROGRAM MULTI-HABITAT PLANNING AREA OVER A PORTION OF THE SE 1/4 OF THE NE 1/4 OF THE SE 1/4 OF SECTION 14, T14S, R3W, S.B.M

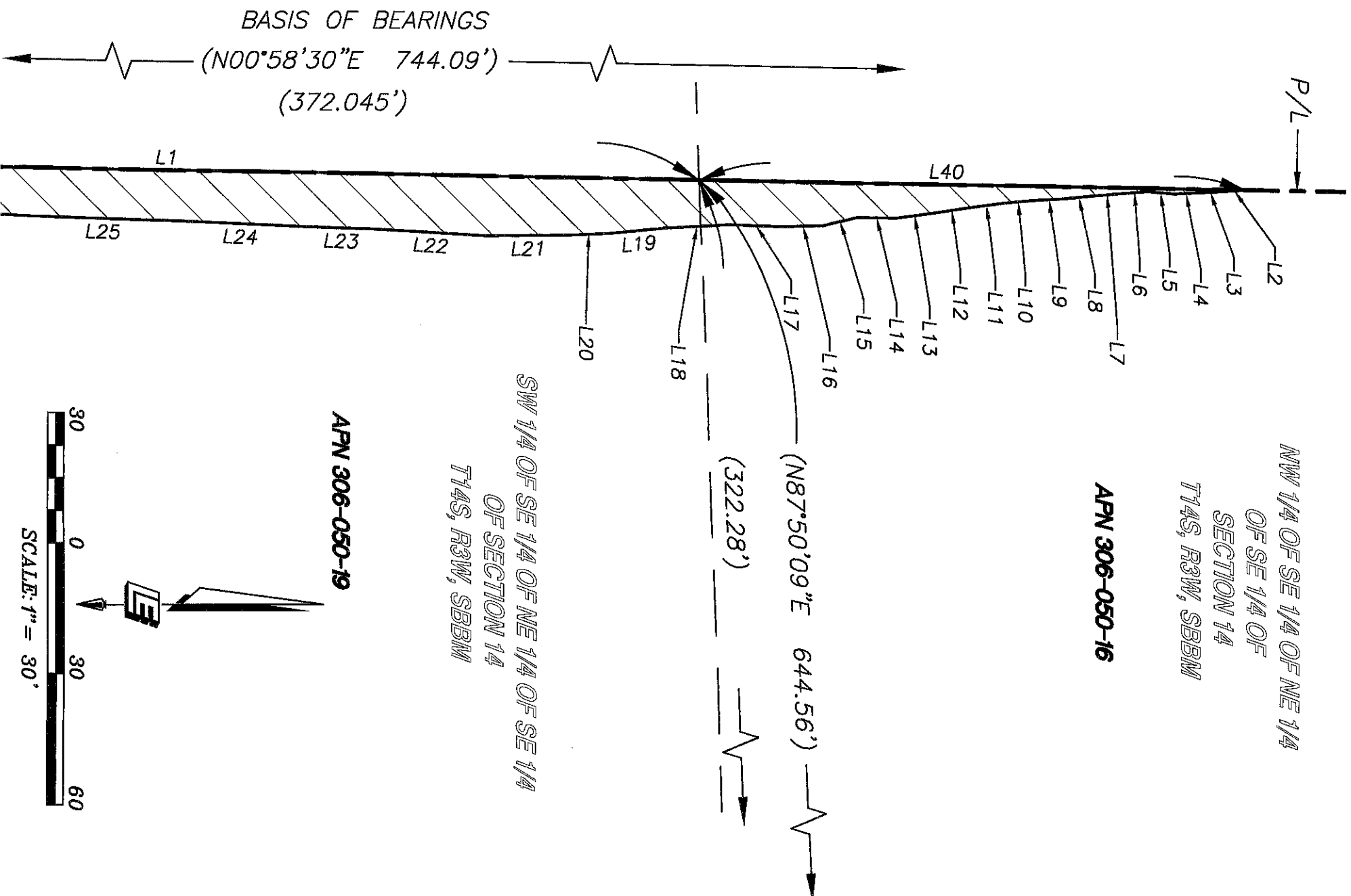
DESCRIPTION	BY	APPROVED	DATE	FILMED
ORIGINAL	LEC	S.O.	4/21/21	
CITY OF SAN DIEGO, CALIFORNIA				
SHEET 1 OF 3 SHEET				
FOR CITY ENGINEER <i>Val R. #9</i> DATE 4/8/2021				
PTS NO. 669465				
1926-6281				
CCS 83 COORDINATES				
286-1721				
NAD 27 COORDINATES				
42022-1-B				

ACQUIRED

STATUS

DOCUMENT NO. 2021-0278450
RECORDED APRIL 09, 2021

EXHIBIT "B"



Leppert Engineering
 CORPORATION
 5190 Governor Drive, Suite 205
 San Diego, Ca. 92122-2848
 Phone: (858) 597-2001

DOCUMENT NO. 2021-0218450
 RECORDED April 09, 2021

COVENANT OF EASEMENT FOR THE PROTECTION OF SENSITIVE BIOLOGICAL RESOURCES ON LANDS THAT ARE NOT INCLUDED WITHIN THE MULTIPLE SPECIES CONSERVATION PROGRAM MULTI-HABITAT PLANNING AREA OVER A PORTION OF THE SE 1/4 OF THE NE 1/4 OF THE SE 1/4 OF SECTION 14, T14S, R3W, S.B.M

DESCRIPTION	BY	APPROVED	DATE	FILMED
ORIGINAL	LEC	S.O.	4/22/21	

CITY OF SAN DIEGO, CALIFORNIA
 SHEET 2 OF 3 SHEET
 FOR CITY ENGINEER Paul R. King DATE 4/8/2021

PTS NO. 669465
 1926-6281
 CCS 83 COORDINATES
 286-1721
 NAD 27 COORDINATES

ACQUIRED

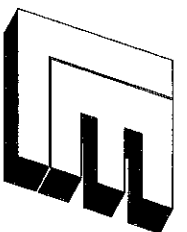
STATUS

42022-2-B

EXHIBIT "B"

LINE TABLE		
LINE	BEARING	DISTANCE
L1	N00° 58' 30"E	372.04'
L2	S03° 54' 25"E	5.36'
L3	S02° 46' 21"E	5.64'
L4	S02° 40' 52"E	5.67'
L5	S04° 42' 15"W	5.98'
L6	S04° 00' 11"E	6.14'
L7	S04° 50' 02"E	6.46'
L8	S05° 57' 01"E	6.68'
L9	S02° 55' 44"E	7.11'
L10	S05° 11' 58"E	7.20'
L11	S07° 55' 26"E	7.48'
L12	S08° 33' 51"E	8.71'
L13	S07° 36' 40"E	8.68'
L14	S01° 04' 23"W	8.92'
L15	S13° 24' 24"E	8.13'
L16	S01° 56' 06"E	9.19'
L17	S02° 08' 45"W	12.50'
L18	S03° 08' 14"E	14.68'
L19	S05° 37' 41"E	12.87'
L20	S02° 34' 08"E	9.56'

LINE TABLE		
LINE	BEARING	DISTANCE
L21	S00° 29' 03"E	19.03'
L22	S03° 12' 16"W	24.95'
L23	S01° 56' 05"W	16.46'
L24	S02° 35' 16"W	30.06'
L25	S01° 48' 21"W	33.39'
L26	S03° 06' 53"W	24.89'
L27	S05° 11' 26"E	21.48'
L28	S10° 13' 14"E	30.87'
L29	S25° 36' 39"E	14.24'
L30	S55° 41' 27"E	26.59'
L31	S45° 05' 33"E	31.73'
L32	N88° 32' 29"E	32.24'
L33	S01° 15' 13"E	29.19'
L34	S51° 31' 36"E	46.70'
L35	S85° 53' 46"E	5.16'
L36	S17° 59' 41"E	11.67'
L37	S89° 50' 09"E	110.26'
L38	S01° 32' 54"E	15.00'
L39	S88° 27' 06"W	260.50'
L40	N00° 58' 30"E	126.13'



Leppert Engineering
CORPORATION
5190 Governor Drive, Suite 205
San Diego, Ca. 92122-2848
Phone: (858) 597-2001

DOCUMENT NO. 2021-0278450
RECORDED April 09, 2021

COVENANT OF EASEMENT FOR THE PROTECTION OF SENSITIVE BIOLOGICAL RESOURCES ON LANDS THAT ARE NOT INCLUDED WITHIN THE MULTIPLE SPECIES CONSERVATION PROGRAM MULTI-HABITAT PLANNING AREA OVER A PORTION OF THE SE 1/4 OF THE NE 1/4 OF THE SE 1/4 OF SECTION 14, T14S, R3W, S.B.M

DESCRIPTION	BY	APPROVED	DATE	FILMED	CITY OF SAN DIEGO, CALIFORNIA	PTS NO. 669465
ORIGINAL	LEC	S.D.	4/24/21		SHEET 3 OF 3 SHEET	
					<i>Paul R. R. G.</i> FOR CITY ENGINEER	1926-6281
					DATE <u>4/18/2021</u>	CCS 83 COORDINATES
						286-1721
						NAD 27 COORDINATES
ACQUIRED					STATUS	42022-3-B