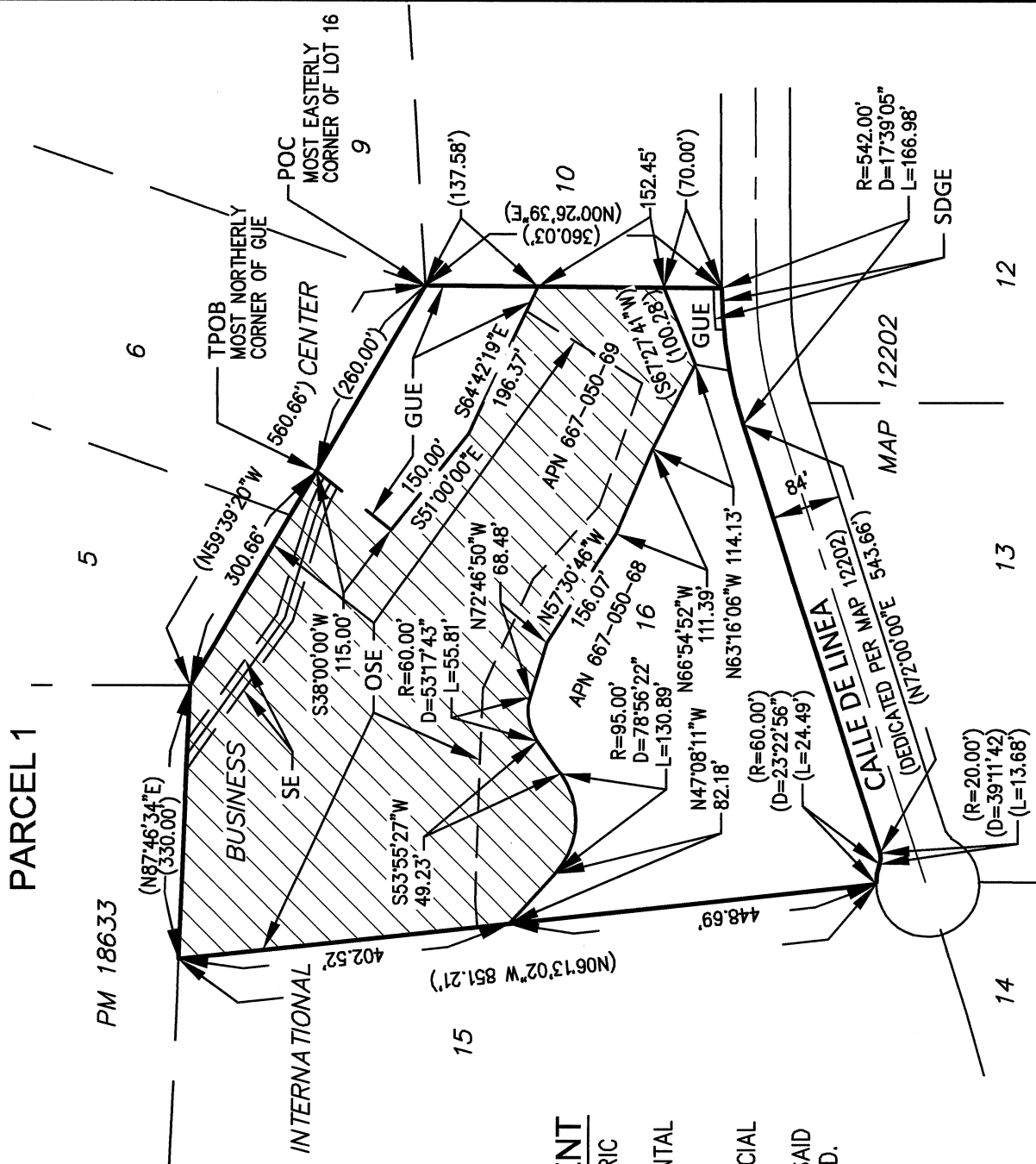
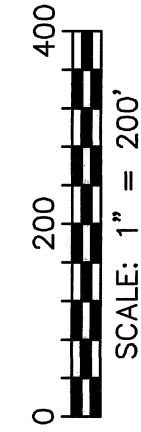


EXHIBIT "B"



NON-PLOTTABLE EASEMENT

GRANTED TO: SAN DIEGO GAS & ELECTRIC COMPANY, A CORPORATION
 PURPOSE: PUBLIC UTILITIES AND INCIDENTAL PURPOSES
 RECORDING DATE: JUNE 29, 2021
 RECORDING NO: 2021-0468987 OF OFFICIAL RECORDS
 THE EXACT LOCATION AND EXTENT OF SAID EASEMENT IS NOT DISCLOSED OF RECORD.

REFERENCE DRAWINGS

MAP 12202, PARCEL MAP 18633


ASSESSOR'S PARCEL NO.

667-050-069-00

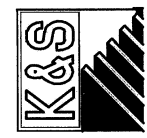
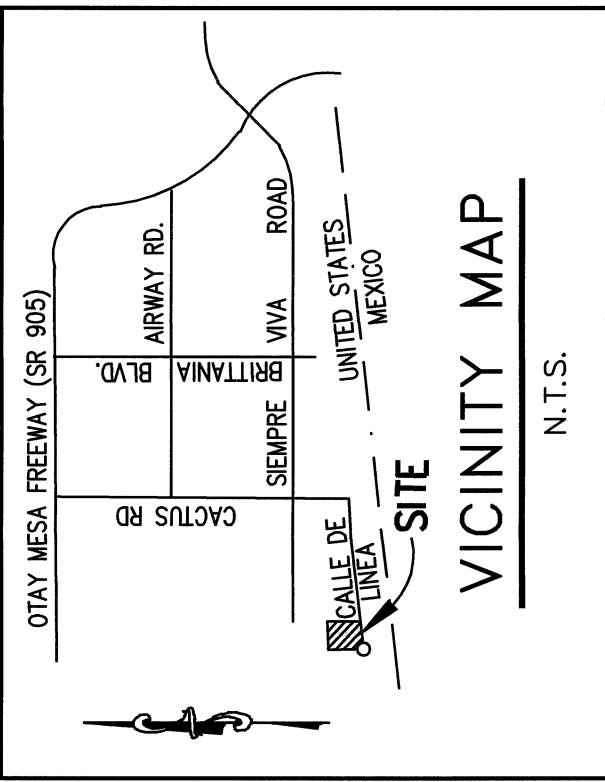
BASIS OF BEARINGS

THE BASIS OF BEARINGS FOR THIS DRAWING IS THE NORTHEASTERLY LINE OF LOT 16, MAP 12202, I.E. N 59°39'20" W

LEGEND

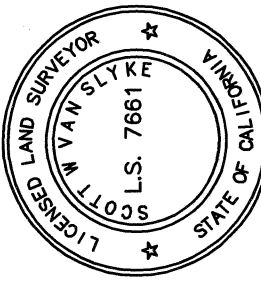
- OSE INDICATES OPEN SPACE EASEMENT GRANTED TO THE CITY OF SAN DIEGO PER MAP 12202
- SE INDICATES SEWER EASEMENT GRANTED TO THE CITY OF SAN DIEGO PER MAP 12202
- GUE INDICATES GENERAL UTILITY EASEMENT GRANTED TO THE CITY OF SAN DIEGO PER MAP 12202
- SDGE INDICATES SAN DIEGO GAS AND ELECTRIC COMPANY EASEMENT FOR PUBLIC UTILITIES, INGRESS AND EGRESS RECORDED 5-3-1989 AS INSTR. NO. 89-231914
- () INDICATES RECORD INFORMATION PER MAP 12202
-  INDICATES COVENANT OF EASEMENT

ACQUIRED AREA= 6.519 ACRES



K&S ENGINEERING
 Planning Engineering Surveying

Scott W. Van Slyke 1-21-22
 SCOTT W. VAN SLYKE, LS 7661 DATE
 7801 Mission Center Court, Suite 100
 San Diego Ca. 92108



DOC NO. 2022-0079939
 RECORDED FEBRUARY 22, 2022

COVENANT OF EASEMENT WITHIN A PORTION OF LOT 16 OF INTERNATIONAL BUSINESS CENTER, MAP 12202

DESCRIPTION	BY	APPROVED	DATE	FILMED	I.O.#	N/A
ORIGINAL	K&S		1/24/2022		PTS#	669626
		CD				1778-6331
					CCS83 COORDINATES	138-1771
					LAMBERT COORDINATES	42023-B

COMPLETED

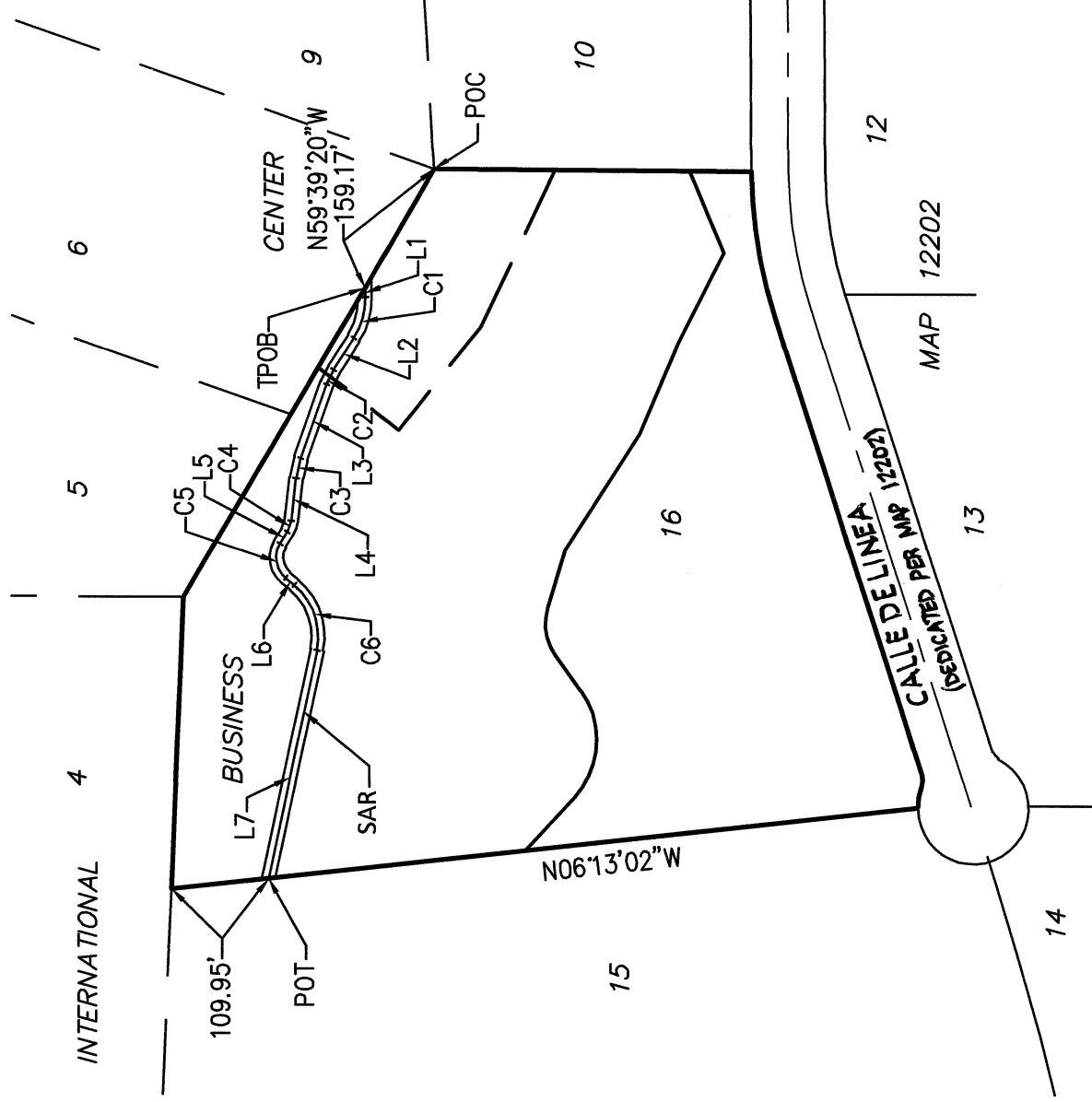
STATUS

EXHIBIT "B"

ACCESS ROAD



SCALE: 1" = 200'

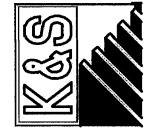


LINE DATA TABLE	
BEARING	LENGTH
L1 S87°47'12"W	10.27'
L2 N57°29'13"W	42.53'
L3 N70°39'20"W	88.62'
L4 N83°46'34"W	48.63'
L5 N58°28'41"W	15.74'
L6 S39°38'11"W	12.79'
L7 N78°03'28"W	263.60'

CURVE DATA TABLE		
RADIUS	DELTA	LENGTH
C1 80.00'	34°43'35"	48.49'
C2 80.00'	13°10'07"	18.39'
C3 100.00'	13°07'14"	22.90'
C4 30.00'	25°17'53"	13.25'
C5 30.00'	81°53'08"	42.88'
C6 75.00'	62°18'21"	81.56'

LEGEND

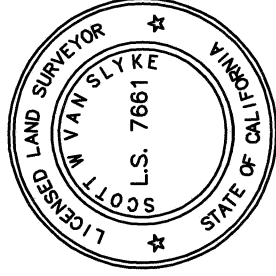
SAR INDICATES CENTERLINE OF SEWER ACCESS ROAD EASEMENT TO CITY OF SAN DIEGO
EASEMENT IS 15.00' WIDE.



K&S ENGINEERING
Planning Engineering Surveying

Scott W. Van Slyke 1-21-22

(619)296-5565
SCOTT W. VAN SLYKE, LS 7661 DATE
7801 Mission Center Court, Suite 100
San Diego Ca. 92108



DOC NO. 2022-0079939
RECORDED FEBRUARY 22, 2022

COVENANT OF EASEMENT WITHIN A PORTION OF LOT 16 OF INTERNATIONAL BUSINESS CENTER, MAP 12202

DESCRIPTION	BY	APPROVED	DATE	FILMED	I.O.#	N/A
ORIGINAL	K&S				PTS#	669626
		CD	1/21/2022			1778-6331
					CCS83 COORDINATES	
					138-1771	
					LAMBERT COORDINATES	
					42023-B	

CITY OF SAN DIEGO, CALIFORNIA
DEVELOPMENT SERVICES DEPARTMENT
SHEET 2 OF 2 SHEETS

Amelia R. F.D. 2/18/2022

FOR CITY LAND SURVEYOR

DIVISION HEAD

SECTION HEAD

COMPLETED

STATUS