

EXHIBIT B

REFERENCE DRAWINGS:

MAP 1500 AND CR 30769

ASSESSOR'S PARCEL NO.

638-091-28; 638-091-29

NOTE:  
SEE GRADING SHEET 42039-D AND  
PUBLIC IMPROVEMENT SHEET 42038-D

BASIS OF BEARINGS:

THE BASIS OF BEARINGS FOR THIS SURVEY IS THE CALIFORNIA COORDINATE SYSTEM, CGCS83, ZONE 6, EPOCH 1991.35 AND IS DETERMINED BY G.P.S. MEASUREMENTS TAKEN ON 06/19/2020 AT POINTS 'A' & 'B' AS SHOWN HEREON. POINTS 'A' & 'B' WERE ESTABLISHED FROM G.P.S. CITY OF SAN DIEGO CONTROL STATION 59 AND STATION 190 PER RECORD OF SURVEY NO. 14492. THE BEARING FROM POINT 'A' TO POINT 'B' IS NORTH 89°19'49" WEST.

QUOTED BEARINGS FROM REFERENCE MAPS OR DEEDS MAY OR MAY NOT BE IN TERMS OF SAID SYSTEM. THE COMBINED GRID FACTOR AT POINT 'A' IS 1.0000473. GRID DISTANCE = GROUND DISTANCE X COMBINED GRID FACTOR. ELEVATION AT POINT 'A' IS 74.87' (NGVD 29). CONVERGENCE ANGLE AT POINT 'A' IS -00°26'28.03".

EASEMENT LEGEND:

-- AN EASEMENT FOR THE DIVISION OF WATER AND INCIDENTAL PURPOSES, RECORDED IN BOOK 434, PAGE 16, OF DEEDS. (DOCUMENT NOT PLOTTABLE FROM RECORD)

ROW DEDICATIONS LEGEND:

- 1 PORTION OF SAN YSIDRO BOULEVARD DEDICATED PER MAP 6592.
- 2 PORTION OF SAN YSIDRO BOULEVARD DEDICATED PER MAP 6739.
- 3 PORTION OF SAN YSIDRO BOULEVARD DEDICATED PER PARCEL MAP 20744.
- 4 PORTION OF SAN YSIDRO BOULEVARD DEDICATED PER DOCUMENT RECORDED OCTOBER 23, 1915, IN BOOK 500, PAGE 305, OF DEEDS.
- 5 SAN YSIDRO BOULEVARD (FORMERLY COUNTY BOULEVARD PER MAP 1500) HAS NO PUBLIC RECORD OF EVER BEING GRANTED OR DEDICATED FOR PUBLIC USE; IT IS ASSUMED THE CITY OF SAN DIEGO HAS PRESCRIPTIVE RIGHTS OVER SAID RIGHT-OF-WAY.

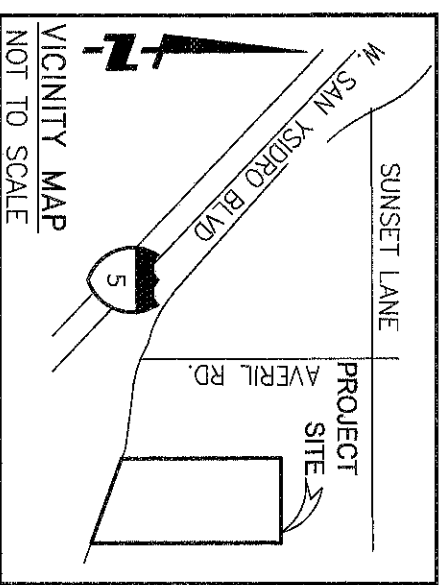
LEGEND:



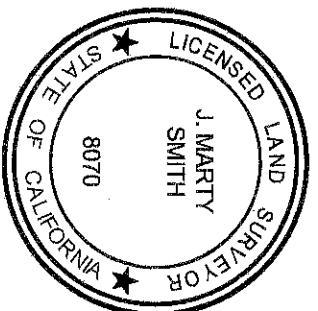
INDICATES PUBLIC STREET EASEMENT DEDICATION, ACQUIRED AREA: 1,390 SQUARE FEET 0.032 ACRES)

T.P.O.B.  
P.O.B.  
P.O.T.  
(...)  
<...>

INDICATES TRUE POINT OF BEGINNING  
INDICATES POINT OF BEGINNING  
INDICATES POINT OF TERMINATION  
INDICATES RECORD OR CALCULATED DATA PER MAP 1500  
INDICATES RECORD DATA PER CORNER RECORD 30769  
INDICATES SUBJECT PROPERTY LINES  
INDICATES CENTERLINES  
INDICATES STREET RIGHT-OF-WAY  
INDICATES INTERIOR LOT LINES  
INDICATES ADJACENT RECORD PROPERTY LINES  
INDICATES ROW DEDICATIONS



16795 Von Karman, Suite 100, Irvine, California 92606  
tel 949 474,1960 o fax 949.474.5315 o www.fuscoe.com



J. MARTY SMITH, LS 8070

11/11/2020

DOCUMENT NO.: 2020 - 0784 743

RECORDED: 12/8/2020

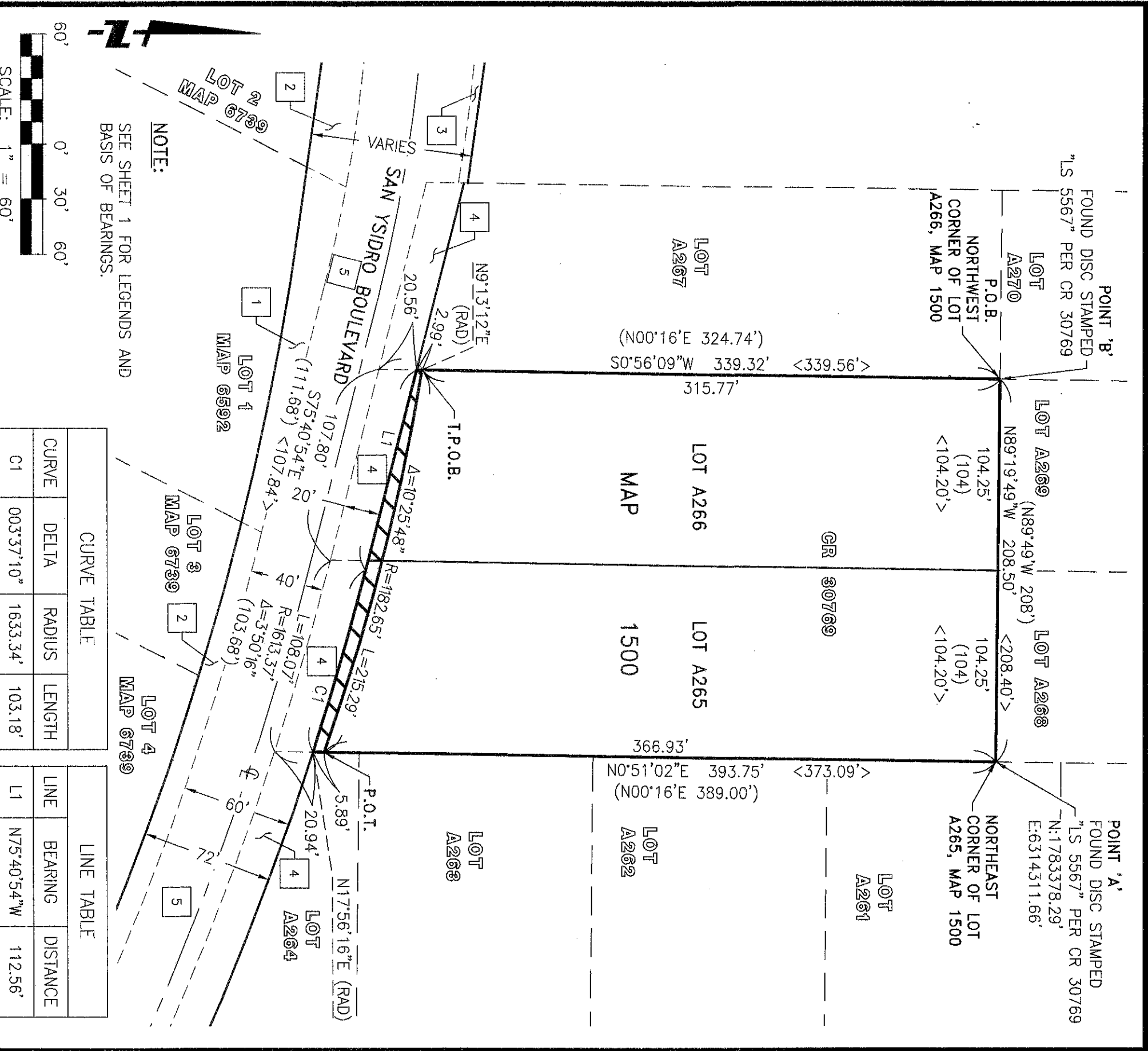
PUBLIC STREET EASEMENT DEDICATION  
PORTIONS OF LOTS A265 AND A266, MAP NO. 1500

DESCRIPTION	BY	APPROVED	DATE	FILMED	CITY OF SAN DIEGO, CALIFORNIA SHEET 1 OF 2	P.T.S. NO. 669931
ORIGINAL	FEI			12-8-20		
					For the City Land Surveyor Engineer Date	1782 - 6311
					Division Head	NAD 83 COORDINATES
					Section Head	142 - 1751
						LAMBERT COORDINATES
						42040-1-B

ACQUIRED

STATUS

EXHIBIT B



CURVE TABLE		
CURVE	DELTA	RADIUS
C1	003°37'10"	1633.34'

LINE TABLE		
LINE	BEARING	DISTANCE
L1	N75°40'54"W	112.56'



**FUSCOE ENGINEERING**  
 16795 Von Karman, Suite 100, Irvine, California 92606  
 tel 949.474.1960 • fax 949.474.5315 • www.fuscoe.com

DOCUMENT NO.: **2020-0784743**

RECORDED: **12/8/2020**

PUBLIC STREET EASEMENT DEDICATION  
 PORTIONS OF LOTS A265 AND A266, MAP NO. 1500

DESCRIPTION	BY	APPROVED	DATE	FILMED	CITY OF SAN DIEGO, CALIFORNIA SHEET 2 OF 2	P.T.S. NO.
ORIGINAL	FEI			<b>12.8.20</b>		669931
					<b>11/17/2020</b>	1782 - 6311
					FOR THE CITY LAND SURVEYOR ENGINEER DATE	NAD 83 COORDINATES
					DIVISION HEAD	142 - 1751
					SECTION HEAD	LAMBERT COORDINATES

ACQUIRED

STATUS

SECTION HEAD

42040-2-B