

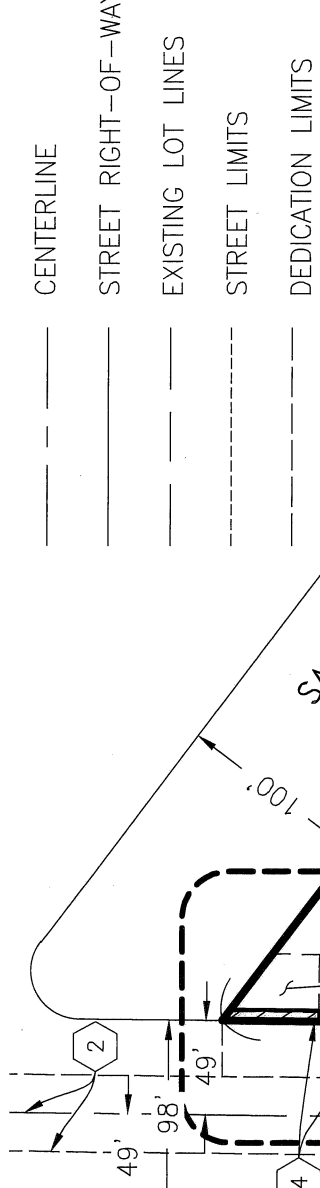
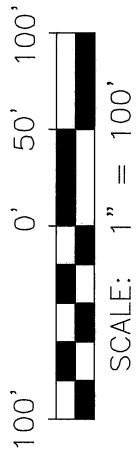
EXHIBIT B

REFERENCE DRAWINGS:

MAP 8497, MAP 8810, AND PM 12045, 100489-1-D

ASSESSOR'S PARCEL NO.:

637-021-17



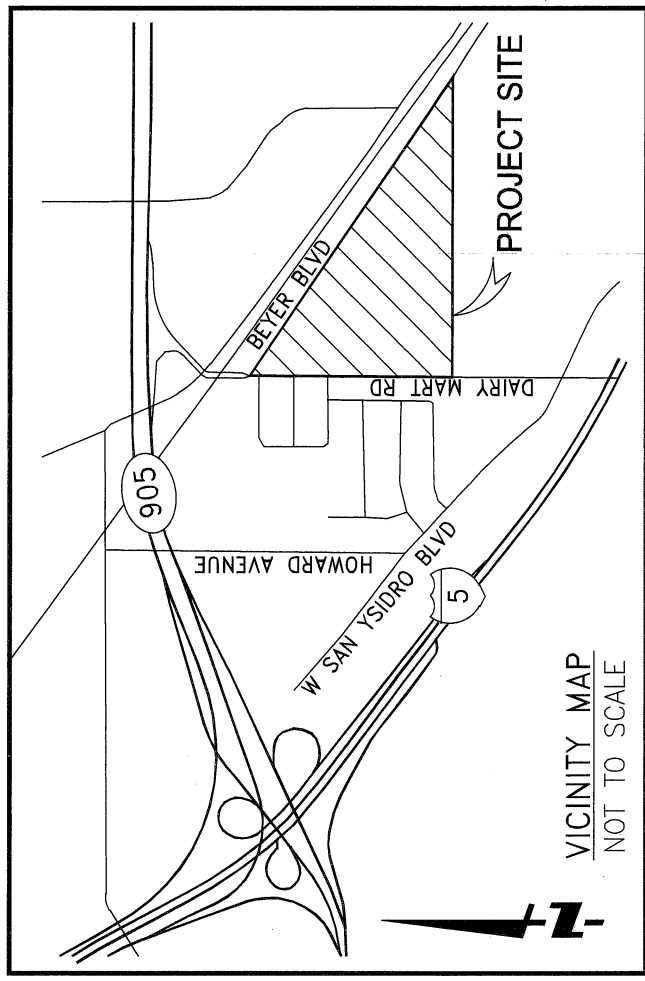
SAN DIEGO & ARIZONA EASTERN RAILROAD
DEDICATED PER DEED RECORDED JULY 7, 1909,
BOOK 472, PAGE 75 OF DEEDS.
560.37'
SEE SHEET 2

GRANT DEED
FILED 10/29/2021,
DOC# 2021-0755949 O.R.
PORTION OF S1/2, S1/2,
NE1/4, NW1/4,
SEC 35, T18S, R2W, SBM
APN: 637-021-17

450.21'
385
384
383
382
381
LOT 9
381
LOT 380
RANCHO JARANA UNIT NO.
MAP NO. 8810

EASEMENT LEGEND:

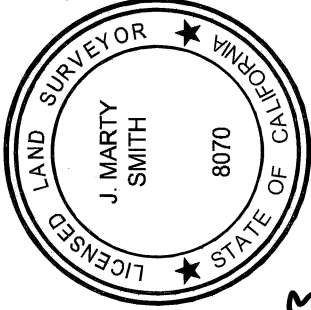
- (A) OTAY WATER DISTRICT EASEMENT, REC. AUGUST 19, 2005 AS DOC. NO. 2005-0716693 OF O.R.
 - (B) CITY OF SAN DIEGO EARTH EXCAVATION OR EMBANKMENT, SLOPE(S), REC. DECEMBER 5, 1980 AS DOC. NO. 80-409626 OF O.R.
 - (C) 6' WIDE SDG&E EASEMENT, REC. OCTOBER 25, 1928 IN BOOK 1540, PG 190 DEEDS.
- EASEMENT DEED BY COURT ORDER, REC. DECEMBER 12, 2013 AS DOC. NO. 2013-0717457 OF O.R., NO SPECIFIC LOCATION WAS GIVEN IN SAID DOCUMENT AND THEREFORE IS NOT PLOTTED HEREON.



FULL CIRCLE THINKING

6390 Greenwch Dr
Suite 170
San Diego, Ca 92122
fuscoe.com

[Signature]
J. MARTY SMITH, LS 8070
DATE: 6/26/2023



DOCUMENT NO.: 2023-0217554
RECORDED: August 10, 2023

PUBLIC STREET EASEMENT DEDICATION
PORTION OF S1/2, S1/2, NE1/4, NW1/4, SEC 35, T18S, R2W, SBM

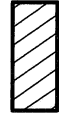

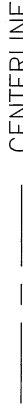
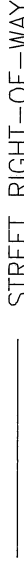
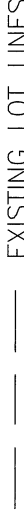
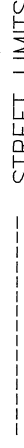

DESCRIPTION	BY	APPROVED	DATE	FILMED
ORIGINAL	FEI			

COMPLETE

CITY OF SAN DIEGO, CALIFORNIA SHEET 1 OF 2	P.T.S. NO. 670336
<i>[Signature]</i> FOR LAND SURVEYOR	1796-6310 CCS 83 COORDINATES
	146-1750 NAD 27 COORDINATES
42045-1-B	B001

STATUS

EXHIBIT B

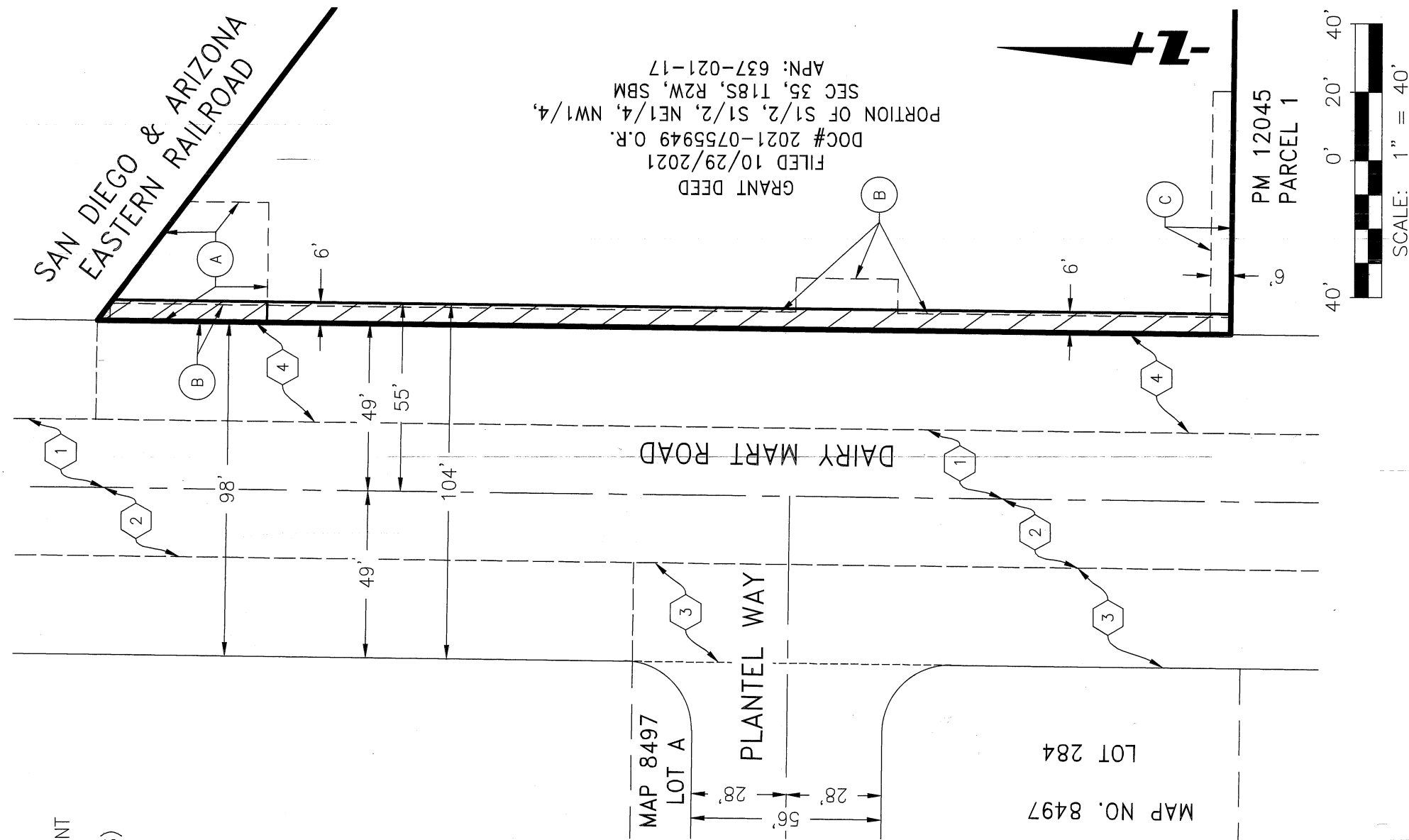
- LEGEND:**
-  INDICATES PUBLIC STREET EASEMENT ACQUIRED
 - AREA = 1987 SQUARE FEET (0.045 ACRES)
 -  PROPERTY LINE
 -  CENTERLINE
 -  STREET RIGHT-OF-WAY
 -  EXISTING LOT LINES
 -  STREET LIMITS
 -  DEDICATION LIMITS

EASEMENT LEGEND:

- (A) OTAY WATER DISTRICT EASEMENT, REC. AUGUST 19, 2005 AS DOC. NO. 2005-0716693 OF O.R.
- (B) CITY OF SAN DIEGO EARTH EXCAVATION OR EMBANKMENT, SLOPE(S), REC. DECEMBER 5, 1980 AS DOC. NO. 80-409626 OF O.R.
- (C) 6' WIDE SDG&E EASEMENT, REC. OCTOBER 25, 1928 IN BOOK 1540, PG 190 DEEDS.
- EASEMENT DEED BY COURT ORDER, REC. DECEMBER 12, 2013 AS DOC. NO. 2013-0717457 OF O.R., NO SPECIFIC LOCATION WAS GIVEN IN SAID DOCUMENT AND THEREFORE IS NOT PLOTTED HEREON.

HISTORIC RIGHT-OF-WAY LEGEND:

- (1) PORTION OF DAIRY MART ROAD DEDICATED BY DECLARATION OF THE BOARD OF SUPERVISORS JULY 10, 1914, VOL. 34, PAGE 322, MINUTES OF SUPERVISOR'S MEETINGS.
- (2) PORTION OF DAIRY MART ROAD DEDICATED PER DEED REC. OCT. 7, 1913, DOC. NO. 27990, BOOK 500, PAGE 217 OF DEEDS.
- (3) PORTION OF PLANTEL WAY AND DAIRY MART ROAD DEDICATED PER MAP NO. 8497.
- (4) PORTION OF DAIRY MART ROAD DEDICATED PER FILE NO. 80-409626, RECORDED DECEMBER 5, 1980, OF OFFICIAL RECORDS.



FULL CIRCLE THINKING
 15535 Sand Canyon Ave 949.474.1960
 Suite 100
 Irvine California 92618 fuscoe.com

PUBLIC STREET EASEMENT DEDICATION
 PORTION OF S1/2, S1/2, NE1/4, NW1/4, SEC 35, T18S, R2W, SBM

DESCRIPTION	BY	APPROVED	DATE	FILMED	STATUS
ORIGINAL	FEI				

COMPLETE

CITY OF SAN DIEGO, CALIFORNIA SHEET 2 OF 2	P.T.S. NO. 670336
FOR LAND SURVEYOR	1796-6310
DATE	CCS 83 COORDINATES
	146-1750
	NAD 27 COORDINATES
	B002

42045-2-B