


EXHIBIT "C"

REFERENCE DRAWINGS:

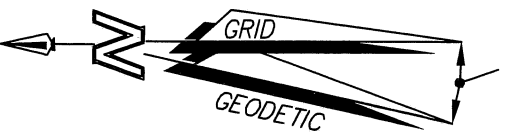
ROS 20005, ROS 9854, ROS 6863

ASSESSOR'S PARCEL NO.:

458-010-34, 458-010-36

- LEGEND:**
-  INDICATES COVENANT OF EASEMENT ACQUIRED 34,702 SQUARE FEET (0.797 ACRES)
  - (...) INDICATES RECORD OR CALCULATED DATA PER ROS 20005, ROS 9854 AND ROS 6863
  - INDICATES PROPERTY BOUNDARY LINE
  - - - - - INDICATES EXISTING LOT LINE
  - . - . - . INDICATES EASEMENT LINE

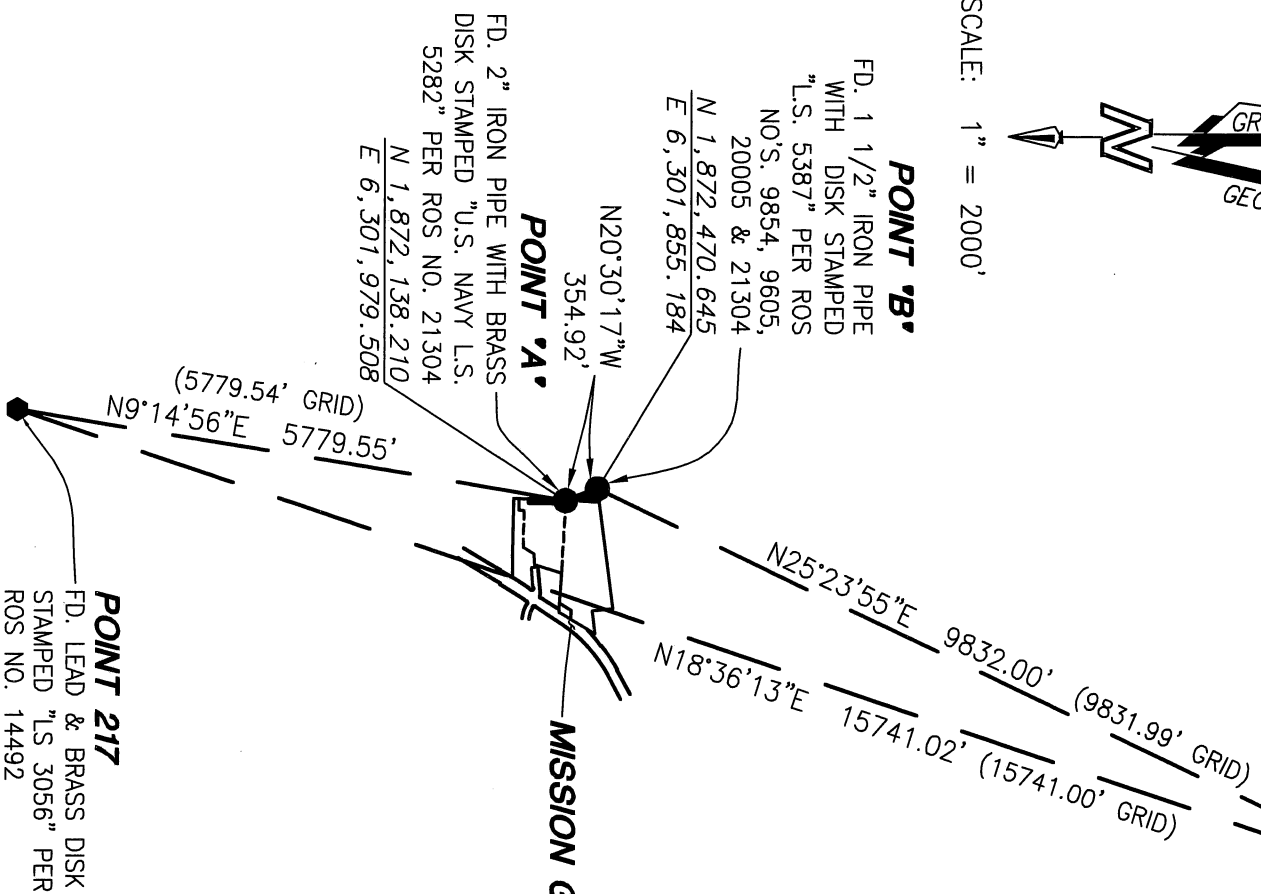
CONVERGENCE  
ANGLE AT  
POINT "A" =  
-0027'51.82"



CONTROL DIAGRAM

**POINT 229B**  
FD. LEAD & BRASS DISK  
STAMPED "LS 3056" PER  
ROS NO. 14492

SCALE: 1" = 2000'

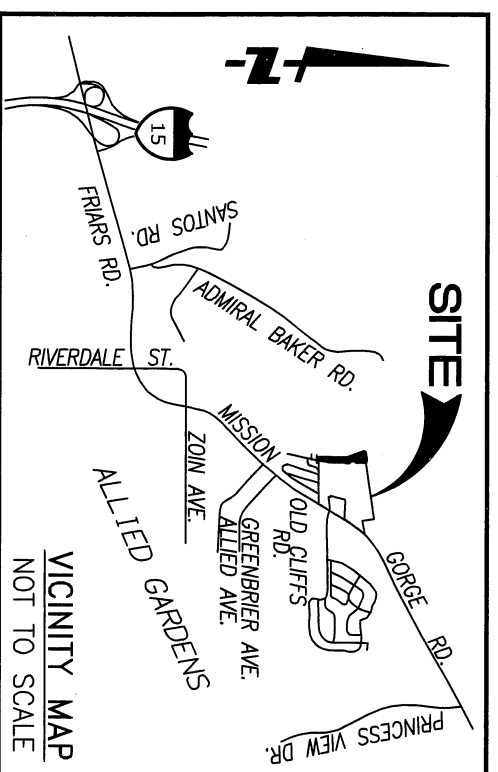


**BASIS OF BEARINGS:**

THE BASIS OF BEARINGS FOR THIS SURVEY IS THE CALIFORNIA COORDINATE SYSTEM, CCS83, ZONE 6, EPOCH 1991.35, AND IS DETERMINED BY GPS MEASUREMENTS TAKEN ON MAY 29, 2019 AT POINTS "A" & "B" AS SHOWN HEREON. POINTS "A" & "B" WERE ESTABLISHED FROM GPS STATION 217 AND GPS STATION 229B PER RECORD OF SURVEY 14492. THE BEARING FROM POINT "A" TO POINT "B" IS NORTH 20°30'17" WEST.

QUOTED BEARINGS FROM REFERENCE MAPS OR DEEDS MAY OR MAY NOT BE IN TERMS OF SAID SYSTEM.

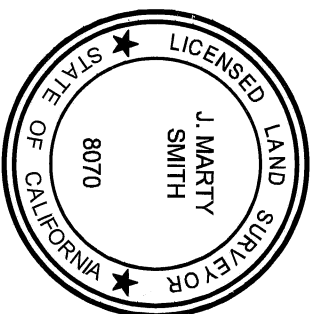
THE COMBINED GRID FACTOR AT POINT "A" 0.99999985. GRID DISTANCE = GROUND DISTANCE X COMBINED GRID FACTOR. ELEVATION AT POINT "A" IS 84.12' (NGVD 29).



16795 Von Karman, Suite 100, Irvine, California 92606  
tel 949.474.1960 o fax 949.474.5315 o www.fuscoe.com

J. MARTY SMITH, LS 8070

2/1/2021  
DATE



DOCUMENT NO.: 2021-0240456

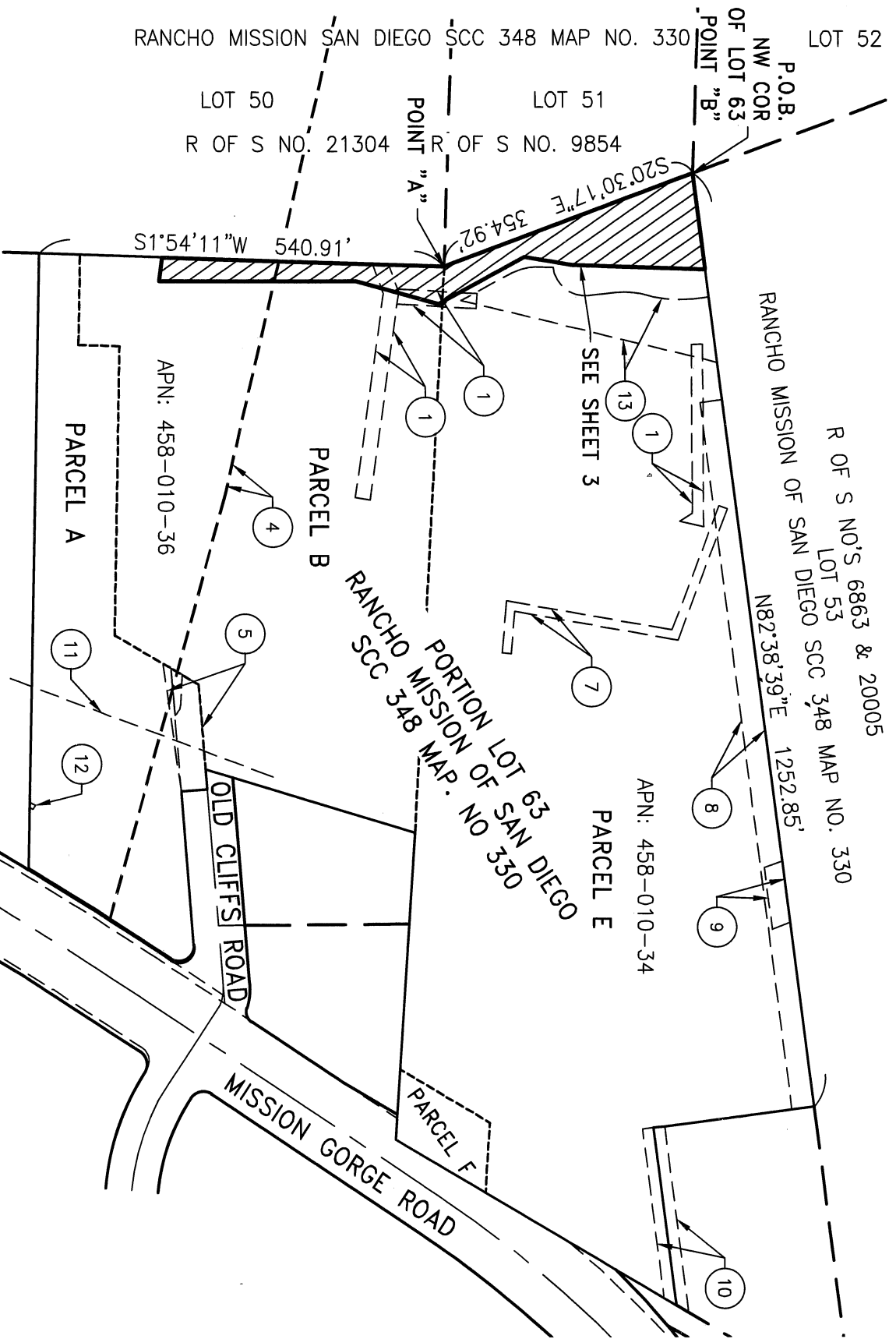
RECORDED: March 29, 2021

COVENANT OF EASEMENT OF ENVIRONMENTALLY SENSITIVE LANDS  
IN PORTION OF LOT 63 OF RANCHO MISSION OF SAN DIEGO, MAP NO. 330

DESCRIPTION	BY	APPROVED	DATE	FILMED	CITY OF SAN DIEGO, CALIFORNIA SHEET 1 OF 3	I.O. NO. 24006240 P.T.S. NO. 448342
ORIGINAL	FEI	S.O.	2/29/21			

STATUS	SECTION HEAD	DIVISION HEAD	FOR CITY ENGINEER	DATE	NAD 83 COORDINATES 1870-6297 230-1737	LAMBERT COORDINATES 42080-1-B
ACQUIRED			J. Marty Smith	3/9/2021		

EXHIBIT "C"

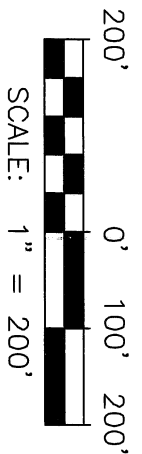



EASEMENT LEGEND:

- ① PROPOSED DRAINAGE EASEMENT PER MAP NO. \_\_\_\_\_
- ④ UTILITY EASEMENT GRANTED TO SDG&E PER DOC. RECORDED 5/10/1916 AS BOOK 705, PAGE 444 OF DEEDS.
- ⑤ ROAD EASEMENT GRANTED TO THE CITY OF SAN DIEGO PER MAP 8254.
- ⑦ UTILITY EASEMENT GRANTED TO SDG&E PER DOC. RECORDED 5/23/1957 AS BOOK 6590, PAGE 181 OF O.R.

EASEMENT LEGEND (CONT.):

- ⑧ RECIPROCAL TEMPORARY GRADING EASEMENT RECORDED OCTOBER 15, 2019 AS INSTRUMENT NO. 2019-0462396 O.R.
- ⑨ UTILITY EASEMENT GRANTED TO SDG&E PER DOC. RECORDED 8/10/1926 AS BOOK 1226, PAGE 383 OF DEEDS.
- ⑩ ROAD EASEMENT GRANTED TO TONY VALLESE AND CARMELA VALLESE PER DOC. RECORDED 3/12/1965 AS INSTRUMENT NO. 44153 O.R.
- ⑪ UTILITY EASEMENT GRANTED TO SDG&E PER DOC. RECORDED 7/25/1934 AS BOOK 317, PAGE 95 OF O.R.
- ⑫ UTILITY EASEMENT GRANTED TO SDG&E PER DOC. RECORDED 12/4/1947 AS BOOK 2569, PAGE 195 OF O.R.
- ⑬ FLOOD WATER STORAGE EASEMENT PER DOCUMENT (SEE CITY DWG. NO. 42081-B)



  
**FUSCOE**  
**ENGINEERING**  
 16795 Von Karman, Suite 100, Irvine, California 92606  
 tel 949.474.1960 • fax 949.474.5315 • www.fuscoe.com

DOCUMENT NO.: 2021-0240456  
 RECORDED: March 29, 2021

COVENANT OF EASEMENT OF ENVIRONMENTALLY SENSITIVE LANDS  
IN PORTION OF LOT 63 OF RANCHO MISSION OF SAN DIEGO, MAP NO. 330

DESCRIPTION	BY	APPROVED	DATE	FILMED
ORIGINAL	FEI	S.O.	4/29/21	

CITY OF SAN DIEGO, CALIFORNIA SHEET 2 OF 3	<i>Y. R. R. R.</i> FOR CITY ENGINEER	DATE 3/9/2021
DIVISION HEAD		
SECTION HEAD		

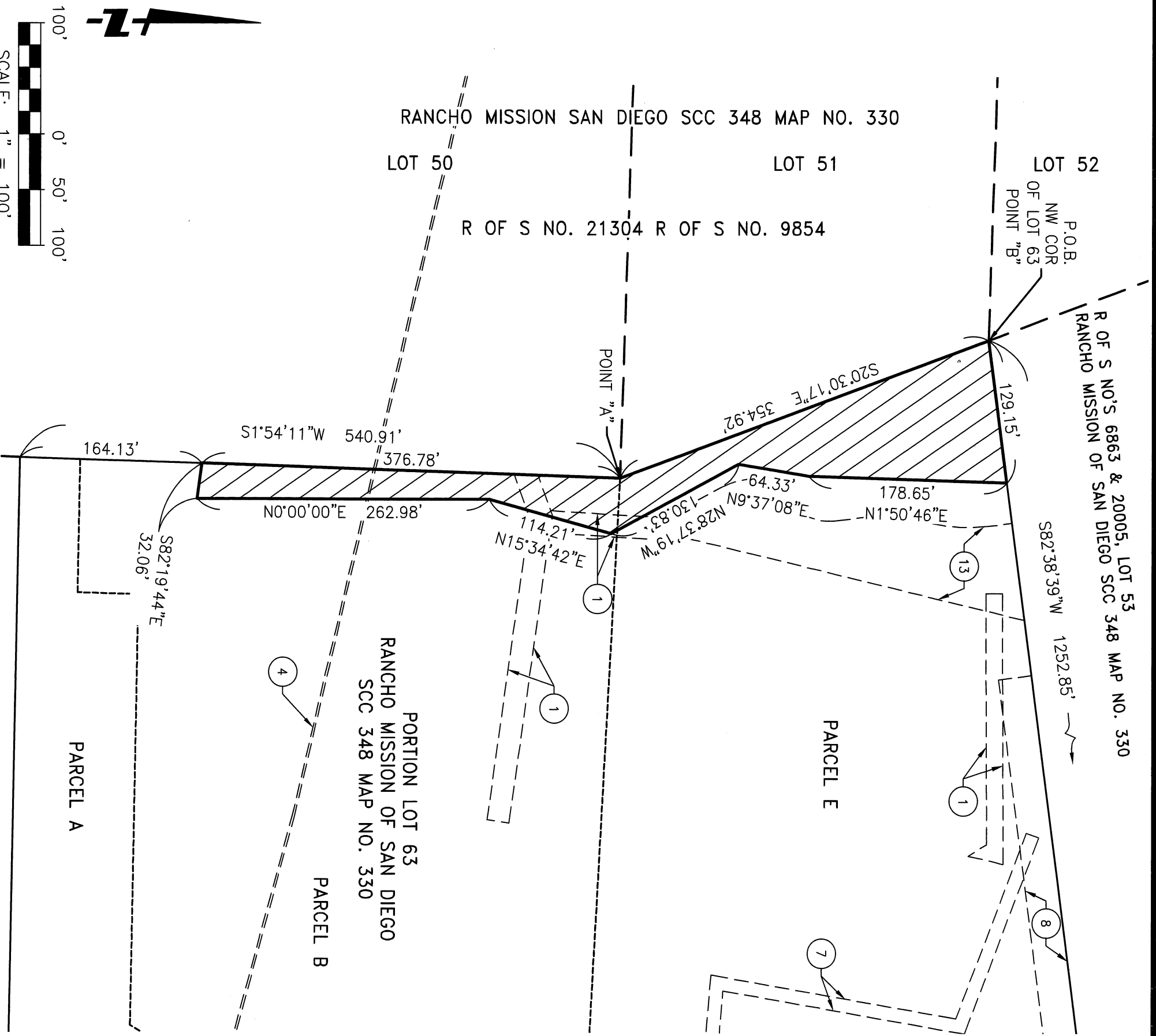
I.O. NO. 24006240 P.T.S. NO. 448342	1870-6297 NAD 83 COORDINATES
	230-1737 LAMBERT COORDINATES

ACQUIRED

STATUS

SECTION HEAD

42080-2-B



**FUSCOE**  
**ENGINEERING**  
 16795 Von Karman, Suite 100, Irvine, California 92606  
 tel 949.474.1960 o fax 949.474.5315 o www.fuscoe.com

DOCUMENT NO.: 2021-0240456  
 RECORDED: MARCH 29, 2021

COVENANT OF EASEMENT OF ENVIRONMENTALLY SENSITIVE LANDS  
 IN PORTION OF LOT 63 OF RANCHO MISSION OF SAN DIEGO, MAP NO. 330

DESCRIPTION	BY	APPROVED	DATE	FILMED
ORIGINAL	FEI	S.O.	4/29/21	

CITY OF SAN DIEGO, CALIFORNIA	FOR CITY ENGINEER	DATE
SHEET 3 OF 3	<i>T. B. K.</i>	3/9/2021
DIVISION HEAD		
SECTION HEAD		

I.O. NO. 24006240	1870-6297
P.T.S. NO. 448342	NAD 83 COORDINATES
	230-1737
	LAMBERT COORDINATES
42080-3-B	

ACQUIRED

STATUS