

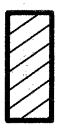
EXHIBIT "B"

REFERENCE DRAWINGS:

ROS 20005, ROS 9854, ROS 6863

ASSESSOR'S PARCEL NO.:

458-010-34, 458-010-36

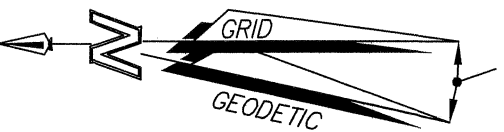


INDICATES FLOOD WATER STORAGE EASEMENT ACQUIRED
18,920 SQUARE FEET (0.434 ACRES)

(...) INDICATES RECORD OR CALCULATED DATA PER
ROS 20005, ROS 9854 AND ROS 6863

- INDICATES PROPERTY BOUNDARY LINE
- INDICATES EXISTING LOT LINE
- - - - - INDICATES EASEMENT LINE

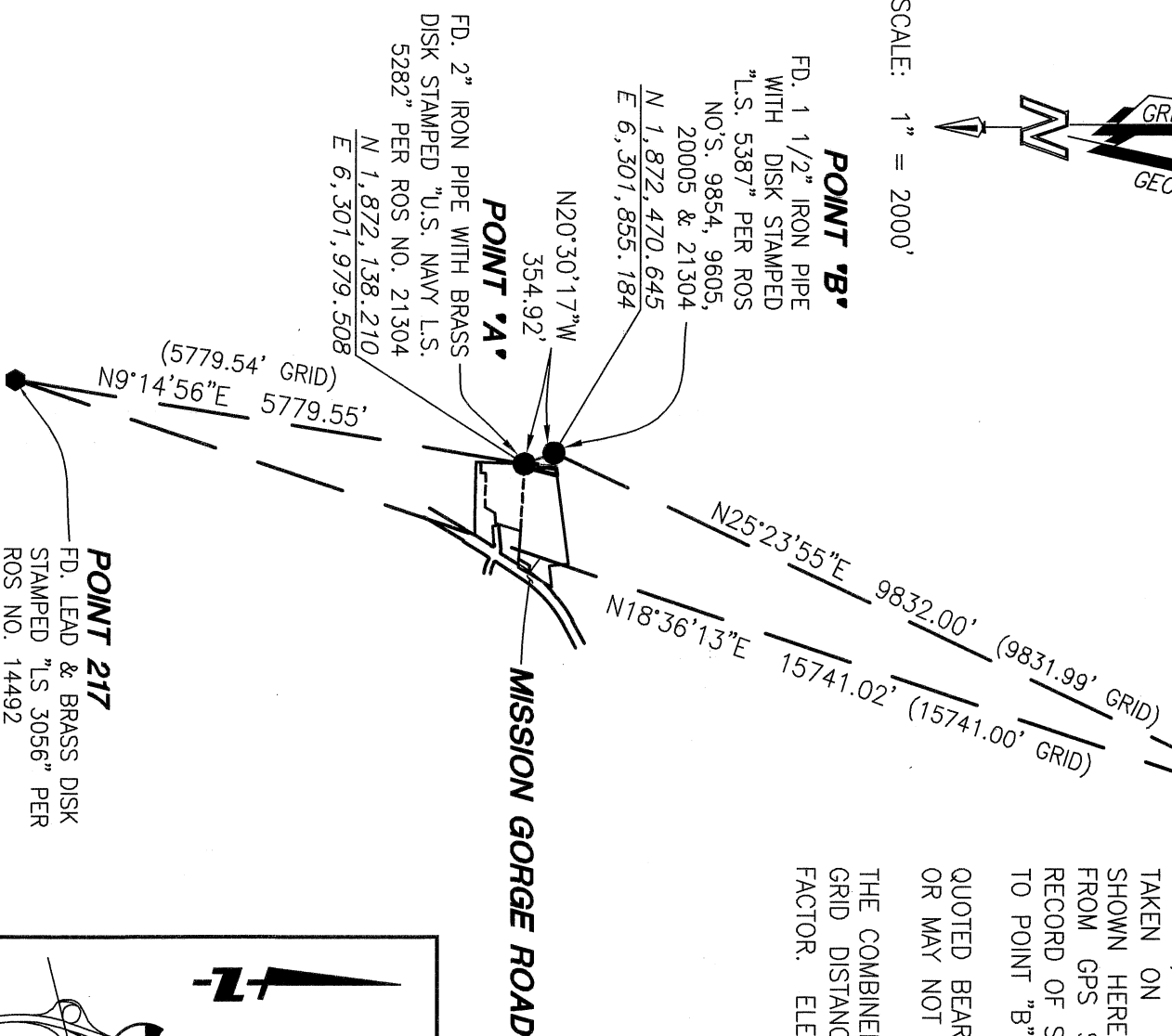
CONVERGENCE
ANGLE AT
POINT "A" =
-00°27'51.82"



CONTROL DIAGRAM

POINT 229B
FD. LEAD & BRASS DISK
STAMPED "LS 3056" PER
ROS NO. 14492

SCALE: 1" = 2000'

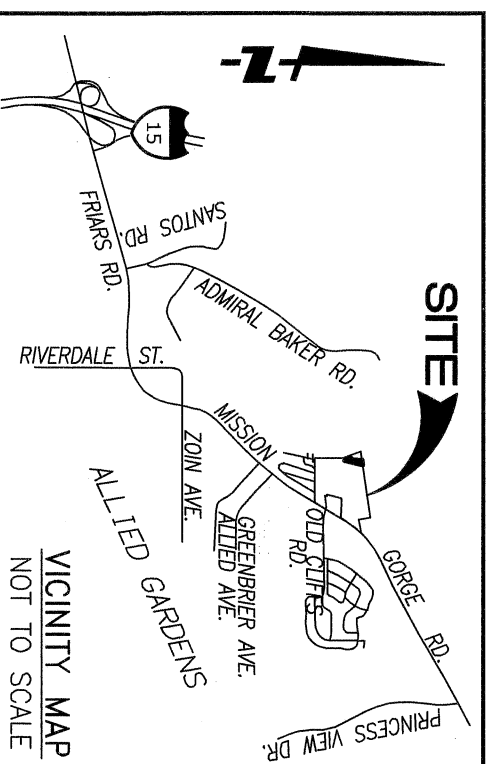


BASIS OF BEARINGS:

THE BASIS OF BEARINGS FOR THIS SURVEY IS THE CALIFORNIA COORDINATE SYSTEM, CCS83, ZONE 6, EPOCH 1991.35, AND IS DETERMINED BY GPS MEASUREMENTS TAKEN ON MAY 29, 2019 AT POINTS "A" & "B" AS SHOWN HEREON. POINTS "A" & "B" WERE ESTABLISHED FROM GPS STATION 217 AND GPS STATION 229B PER RECORD OF SURVEY 14492. THE BEARING FROM POINT "A" TO POINT "B" IS NORTH 20°30'17" WEST.

QUOTED BEARINGS FROM REFERENCE MAPS OR DEEDS MAY OR MAY NOT BE IN TERMS OF SAID SYSTEM.

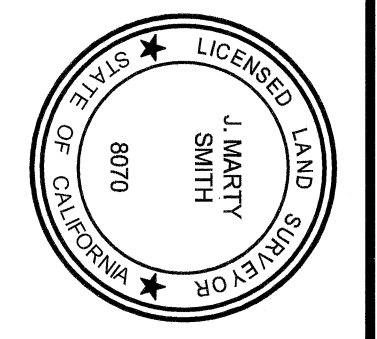
THE COMBINED GRID FACTOR AT POINT "A" 0.99999985.
GRID DISTANCE = GROUND DISTANCE X COMBINED GRID FACTOR. ELEVATION AT POINT "A" IS 84.12' (NGVD 29).



FUSCOE
ENGINEERING

16795 Von Karman, Suite 100, Irvine, California 92606
tel 949.474.1960 fax 949.474.5315 • www.fuscoe.com

J. MARTY SMITH, LS 8070
DATE: 2/4/2021



DOCUMENT NO.: 2021-0297291

RECORDED: April 16, 2021

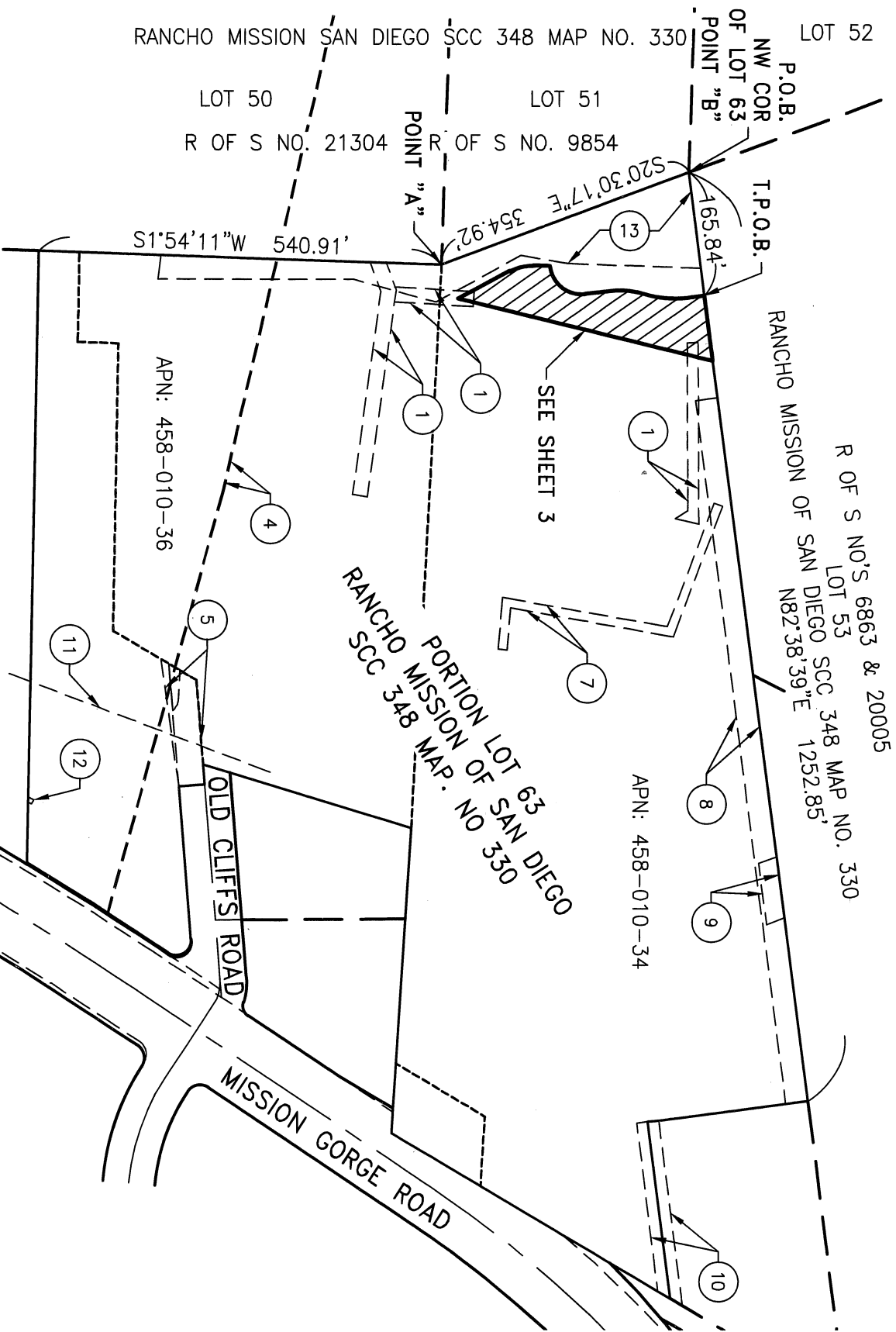
FLOOD WATER STORAGE EASEMENT
IN PORTION OF LOT 63 OF RANCHO MISSION OF SAN DIEGO, MAP NO. 330

DESCRIPTION	BY	APPROVED	DATE	FILMED	CITY OF SAN DIEGO, CALIFORNIA	I.O. NO. 24006240 P.T.S. NO. 448342
ORIGINAL	FEI	S.O.	4/29/21		SHEET 1 OF 3	1870-6297
					FOR CITY ENGINEER	NAD 83 COORDINATES
					DATE	230-1737
					DIVISION HEAD	LAMBERT COORDINATES
					SECTION HEAD	42081-1-B

ACQUIRED

STATUS

EXHIBIT "B"



EASEMENT LEGEND:

- ① PROPOSED DRAINAGE EASEMENT PER MAP NO. _____
- ④ UTILITY EASEMENT GRANTED TO SDG&E PER DOC. RECORDED 5/10/1916 AS BOOK 705, PAGE 444 OF DEEDS.
- ⑤ ROAD EASEMENT GRANTED TO THE CITY OF SAN DIEGO PER MAP 8254.
- ⑦ UTILITY EASEMENT GRANTED TO SDG&E PER DOC. RECORDED 5/23/1957 AS BOOK 6590, PAGE 181 OF O.R.

EASEMENT LEGEND (CONT.):

- ⑧ RECIPROCAL TEMPORARY GRADING EASEMENT RECORDED OCTOBER 15, 2019 AS INSTRUMENT NO. 2019-0462396 O.R.
- ⑨ UTILITY EASEMENT GRANTED TO SDG&E PER DOC. RECORDED 8/10/1926 AS BOOK 1226, PAGE 383 OF DEEDS.
- ⑩ ROAD EASEMENT GRANTED TO TONY VALLESE AND CARMELA VALLESE PER DOC. RECORDED 3/12/1965 AS INSTRUMENT NO. 44153 O.R.
- ⑪ UTILITY EASEMENT GRANTED TO SDG&E PER DOC. RECORDED 7/25/1934 AS BOOK 317, PAGE 95 OF O.R.
- ⑫ UTILITY EASEMENT GRANTED TO SDG&E PER DOC. RECORDED 12/4/1947 AS BOOK 2569, PAGE 195 OF O.R.
- ⑬ COVENANT OF EASEMENT PER DOCUMENT NO. 2021-0240456 recorded 3/29/2021 (SEE CITY DWG. NO. 42080-B)



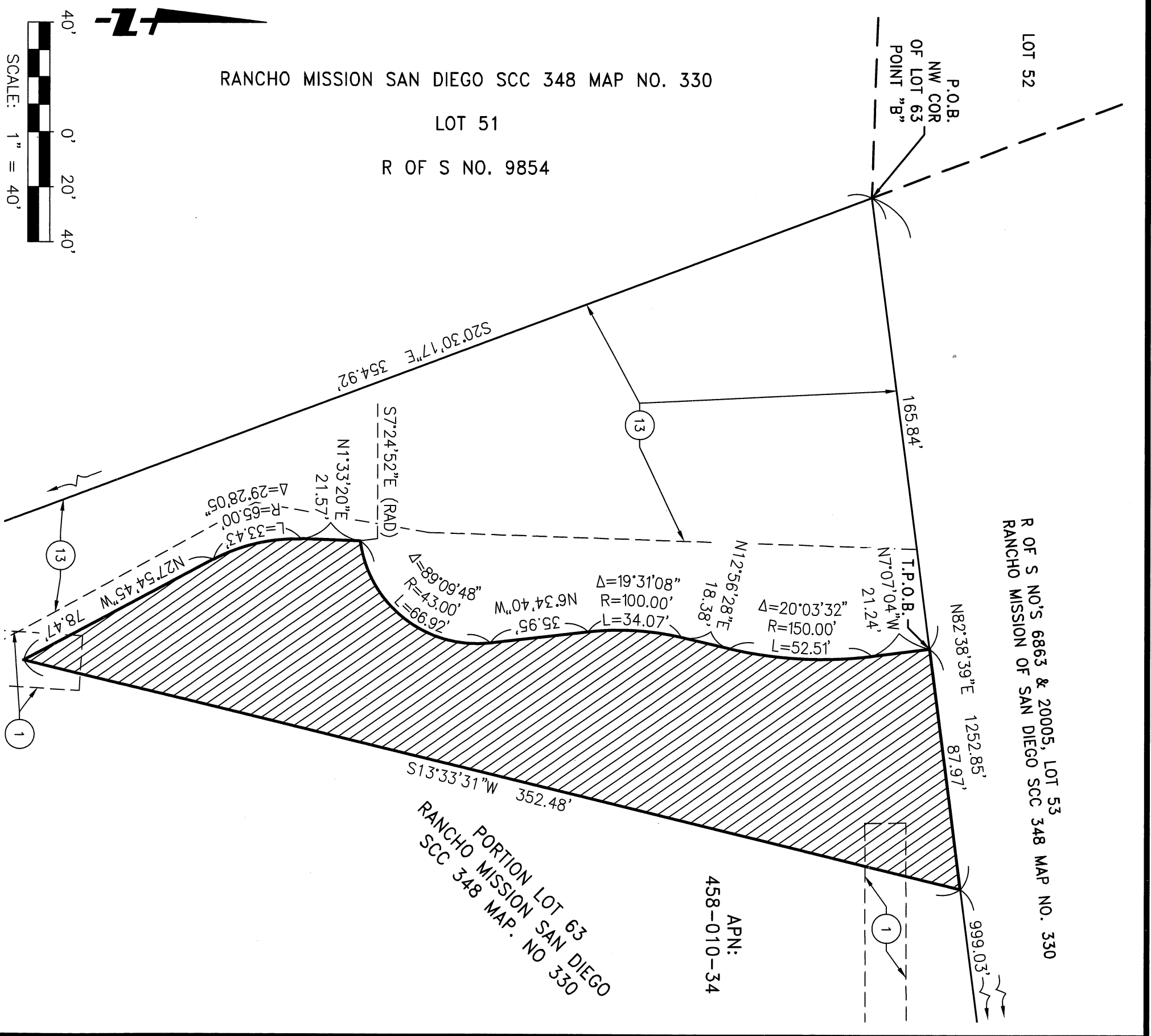
FUSCOE
ENGINEERING
 16795 Von Karman, Suite 100, Irvine, California 92606
 tel 949.474.1960 o fax 949.474.5315 o www.fuscoe.com

FLOOD WATER STORAGE EASEMENT
 IN PORTION OF LOT 63 OF RANCHO MISSION OF SAN DIEGO, MAP NO. 330

DESCRIPTION	BY	APPROVED	DATE	FILMED	CITY OF SAN DIEGO, CALIFORNIA SHEET 2 OF 3	I.O. NO. 24006240 P.T.S. NO. 448342
ORIGINAL	FEI	S.D.	4/29/21			
					FOR CITY ENGINEER <i>Todd R. Kitz</i>	1870-6297
					DATE 3/9/2021	NAD 83 COORDINATES 230-1737
					DIVISION HEAD	LAMBERT COORDINATES 42081-2-B
					SECTION HEAD	

ACQUIRED

STATUS



FUSCOE
ENGINEERING
16795 Von Karman, Suite 100, Irvine, California 92606
tel 949.474.1960 o fax 949.474.5315 o www.fuscoe.com

DOCUMENT NO.: 2021-0291291
RECORDED: April 16, 2021

FLOOD WATER STORAGE EASEMENT
IN PORTION OF LOT 63 OF RANCHO MISSION OF SAN DIEGO, MAP NO. 330

DESCRIPTION	BY	APPROVED	DATE	FILMED	CITY OF SAN DIEGO, CALIFORNIA SHEET 3 OF 3	I.O. NO. 24006240 P.T.S. NO. 448342
ORIGINAL	FEI	S.O.	4/29/21		FOR CITY ENGINEER Kathleen R. Kelly DATE 3/9/2021	1870-6297
					DIVISION HEAD	NAD 83 COORDINATES
					SECTION HEAD	230-1737
						LAMBERT COORDINATES

ACQUIRED

STATUS

SECTION HEAD

42081-3-B