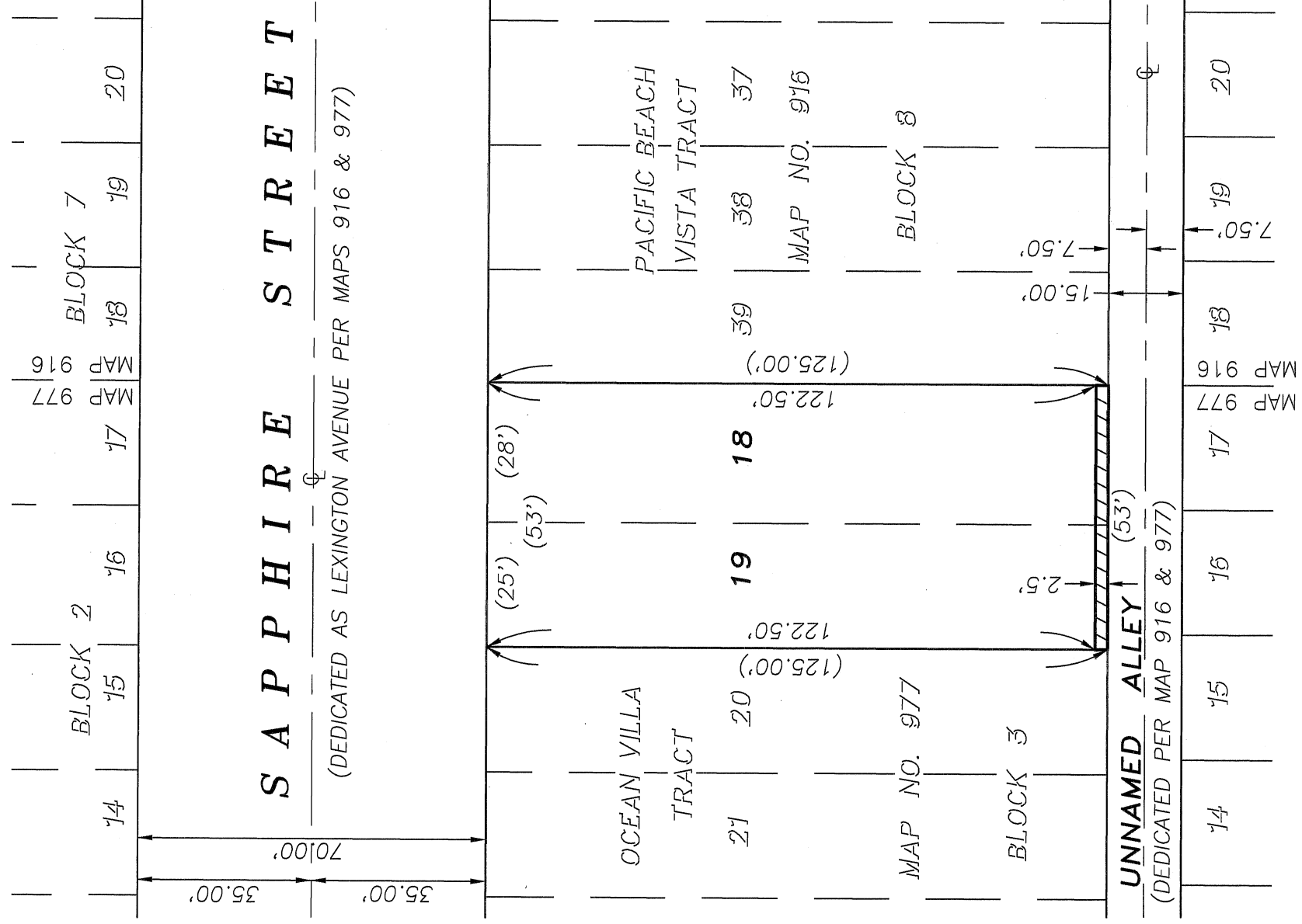


EXHIBIT "B"



LEGEND

- INDICATES PUBLIC ALLEY EASEMENT ACQUIRED AREA 132.5 SQUARE FEET / 0.003 ACRE
- INDICATES RECORD DATA PER MAP NO. 977 ()
- INDICATES CENTERLINE
- INDICATES RIGHT-OF-WAY
- INDICATES OFF SITE LOT LINE

A.P.N.
415-242-08

REFERENCE DRAWINGS
MAP NO. 916 & 977

SAN DIEGO LAND SURVEYING & ENGINEERING, INC.
7028 CONVOY COURT
SAN DIEGO, CA 92111-1017
(858) 565-8362



Robert J. Bateman
ROBERT J. BATEMAN L.S. 7046

DOCUMENT NO. **1011-0177361**
RECORDED **OCTOBER 18, 2021**

PUBLIC ALLEY EASEMENT DEDICATION

IN LOTS 18 & 19 IN BLOCK 3 OF OCEAN VILLA TRACT, MAP NO. 977

DESCRIPTION	BY	APPROVED	DATE	FILMED	CITY OF SAN DIEGO, CALIFORNIA	P.T.S. NO. 675170
ORIGINAL	SDLSE				SHEET 1 OF 1 SHEETS	
					FOR CITY ENGINEER	1874-6250
					DATE	CCS 83 COORDINATES
						234-1690
						LAMBERT COORDINATES
						42113-B

