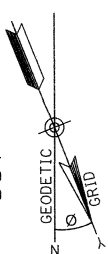


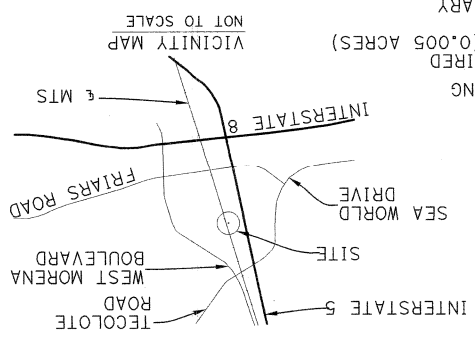
EXHIBIT "B"

CONVERGENCE ANGLE AT GPS STATION 207 $-00^{\circ} 31' 33.36''$
THE COMBINED GRID FACTOR AT GPS-207 IS 1.0000016 USING AN ELEVATION OF 53.28' (NGVD29).

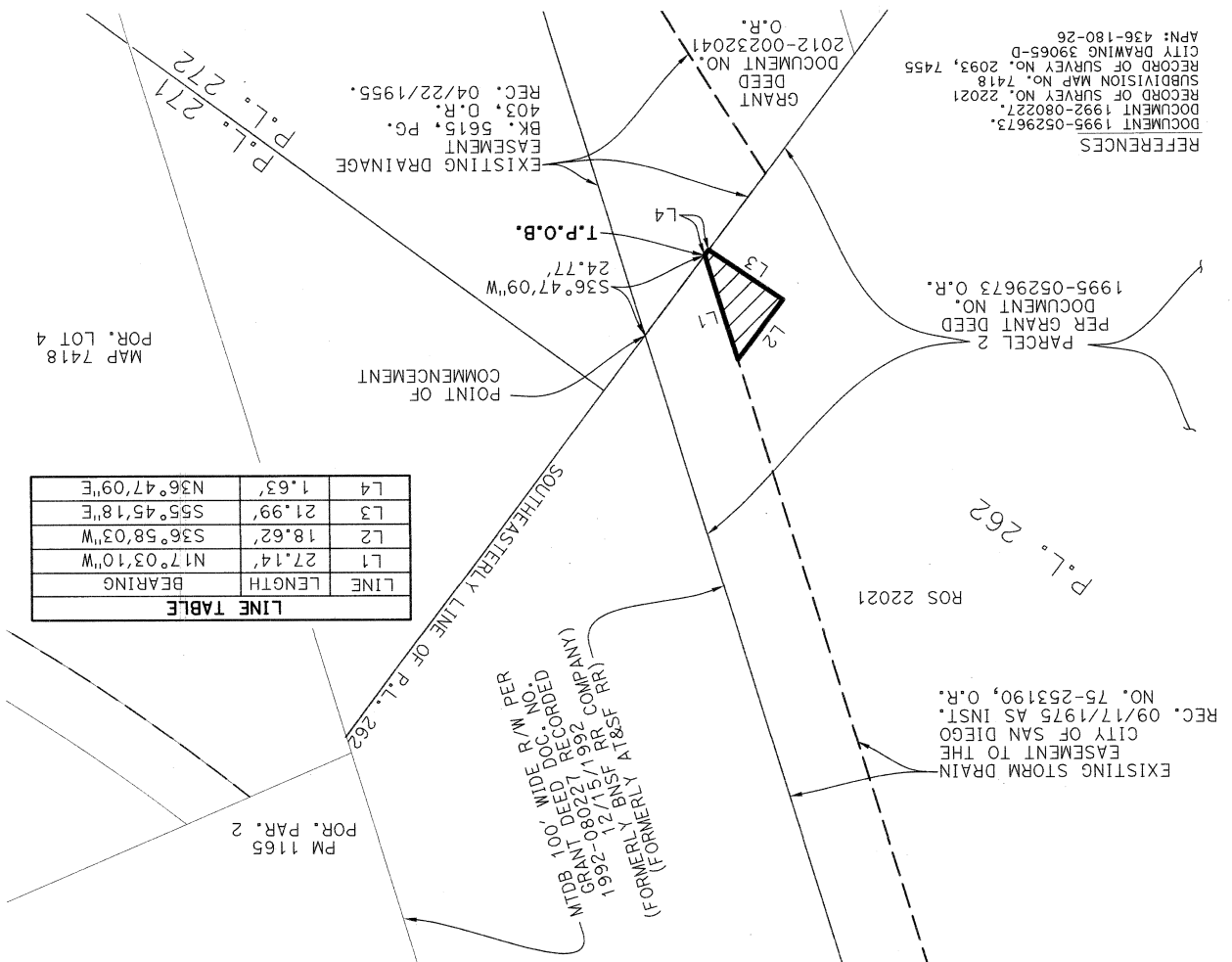


SCALE: 1 INCH = 30 FEET
0' 10' 20' 30' 40' 50' 60'

LEGEND
T.P.O.B. TRUE POINT OF BEGINNING
 DRAINAGE EASEMENT ACQUIRED AREA = 222.76 SQ. FT. (0.005 ACRES)
 MTS RIGHT OF WAY BOUNDARY
 LIMITS OF EXISTING DRAINAGE EASEMENT



LINE TABLE		
LINE	LENGTH	BEARING
L1	27.14'	N17°03'10" W
L2	18.62'	S36°58'03" W
L3	21.99'	S55°45'18" E
L4	1.63'	N36°47'09" E



PSOMAS
 401 B STREET, SUITE 1600
 SAN DIEGO, CA 92101
 (619) 961-2392
 GREGORY A. HELMER, PLS 5134 DATE 7/22/2021

DOCUMENT NO. **7621-D784 883**
 RECORDED NOVEMBER 17, 2021

DRAINAGE EASEMENT
 IN A PORTION OF PUEBLO LOT 262 OF PUEBLO LANDS OF SAN DIEGO ACCORDING TO MAP THEREOF FILED IN THE OFFICE OF THE COUNTY RECORDER AS MISCELLANEOUS MAP NO. 36

DESCRIPTION	BY	APPROVED DATE	FILMED
ORIGINAL		7/22/21	5
STATUS			

CITY OF SAN DIEGO, CALIFORNIA
 SHEET 1 OF 2 SHEET
 I.O. N/A
 PTS 675311
 1860-6266
 CCS 83 COORDINATES
 220-1706
 NAD 27 COORDINATES
 42130-B

DESCRIPTION	BY	APPROVED DATE	FILMED	ORIGINAL
CITY OF SAN DIEGO, CALIFORNIA				
SHEET 2 OF 2 SHEET				
1860-6266				
FOR CITY ENGINEER				
DATE				
1860-6266				
NAD 27 COORDINATES				
220-1706				
42130-B				

DRAINAGE EASEMENT
 IN A PORTION OF PUEBLO LOT 262 OF PUEBLO LANDS OF SAN DIEGO ACCORDING TO MAP THEREOF FILED IN THE OFFICE OF THE COUNTY RECORDER AS MISCELLANEOUS MAP NO. 36

PSOMAS
 401 B STREET, SUITE 1600
 SAN DIEGO, CA 92101
 (619) 961-2392

DOCUMENT No. _____
 RECORDED _____

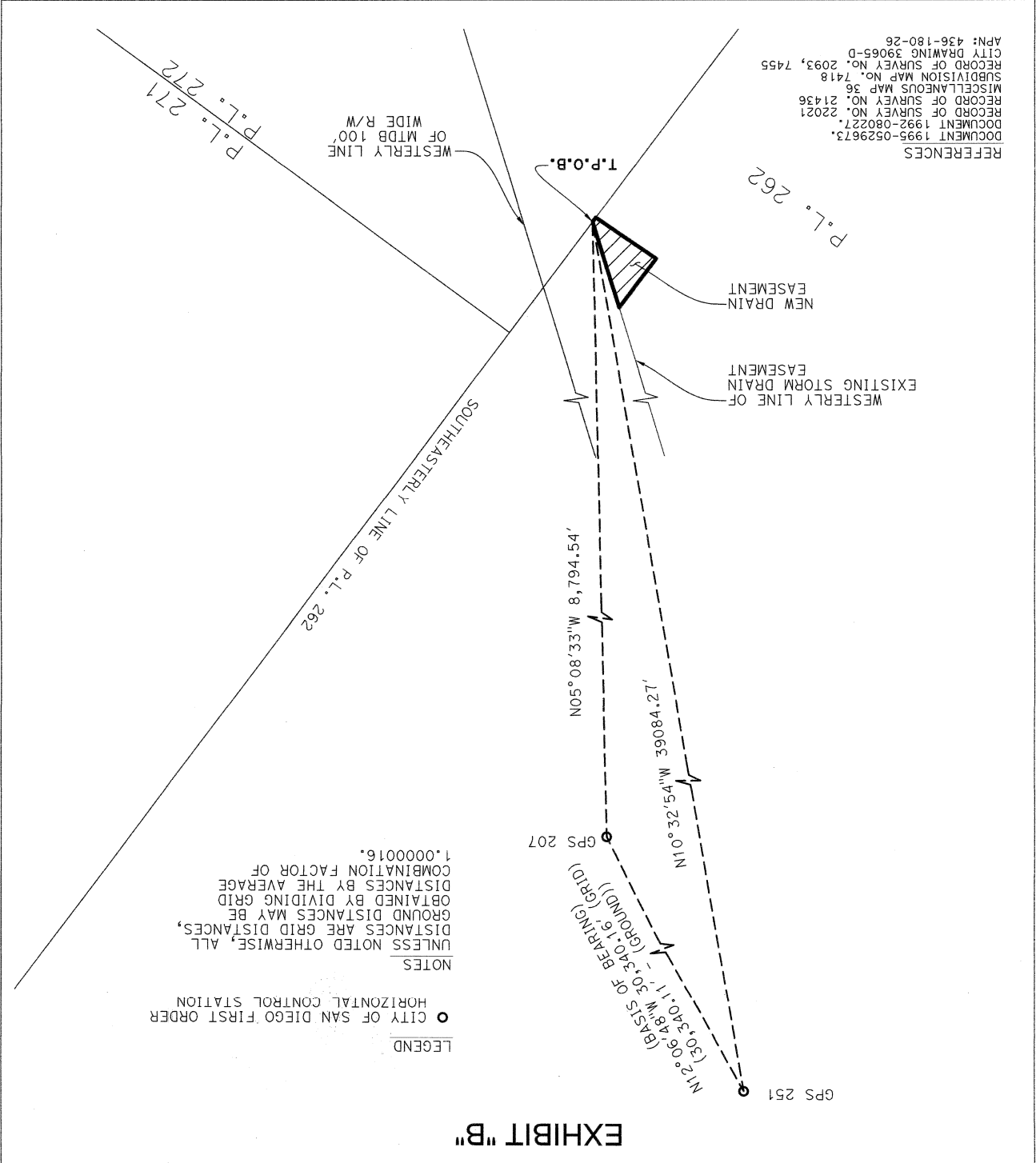


EXHIBIT "B"