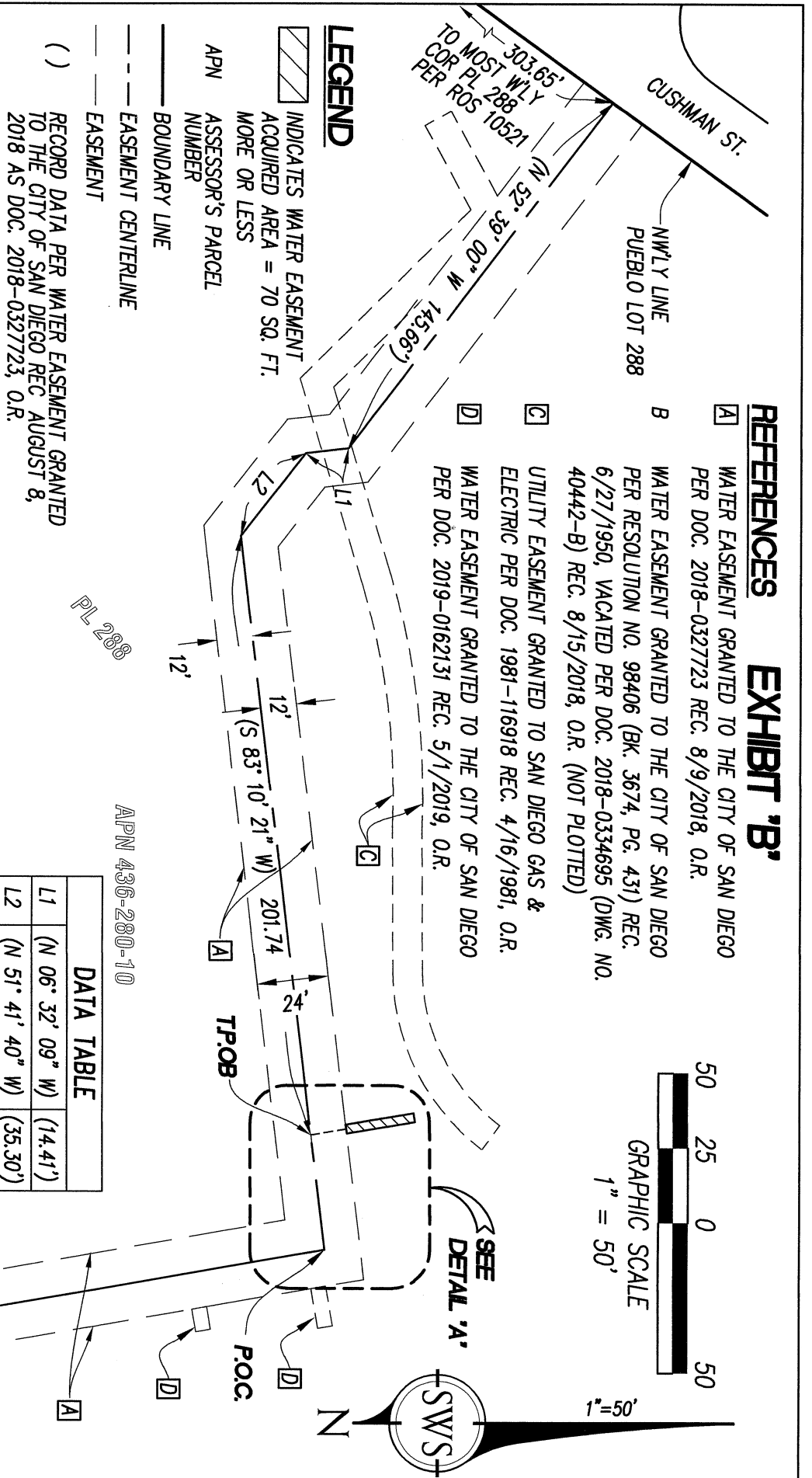


REFERENCES EXHIBIT 'B'

- [A] WATER EASEMENT GRANTED TO THE CITY OF SAN DIEGO PER DOC. 2018-0327723 REC. 8/9/2018, O.R.
- [B] WATER EASEMENT GRANTED TO THE CITY OF SAN DIEGO PER RESOLUTION NO. 98406 (BK. 3674, PG. 431) REC. 6/27/1950, VACATED PER DOC. 2018-0334695 (DWG. NO. 40442-B) REC. 8/15/2018, O.R. (NOT PLOTTED)
- [C] UTILITY EASEMENT GRANTED TO SAN DIEGO GAS & ELECTRIC PER DOC. 1981-116918 REC. 4/16/1981, O.R.
- [D] WATER EASEMENT GRANTED TO THE CITY OF SAN DIEGO PER DOC. 2019-0162131 REC. 5/1/2019, O.R.



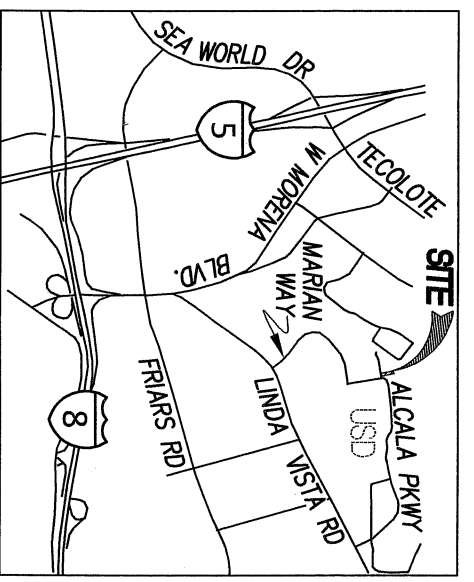
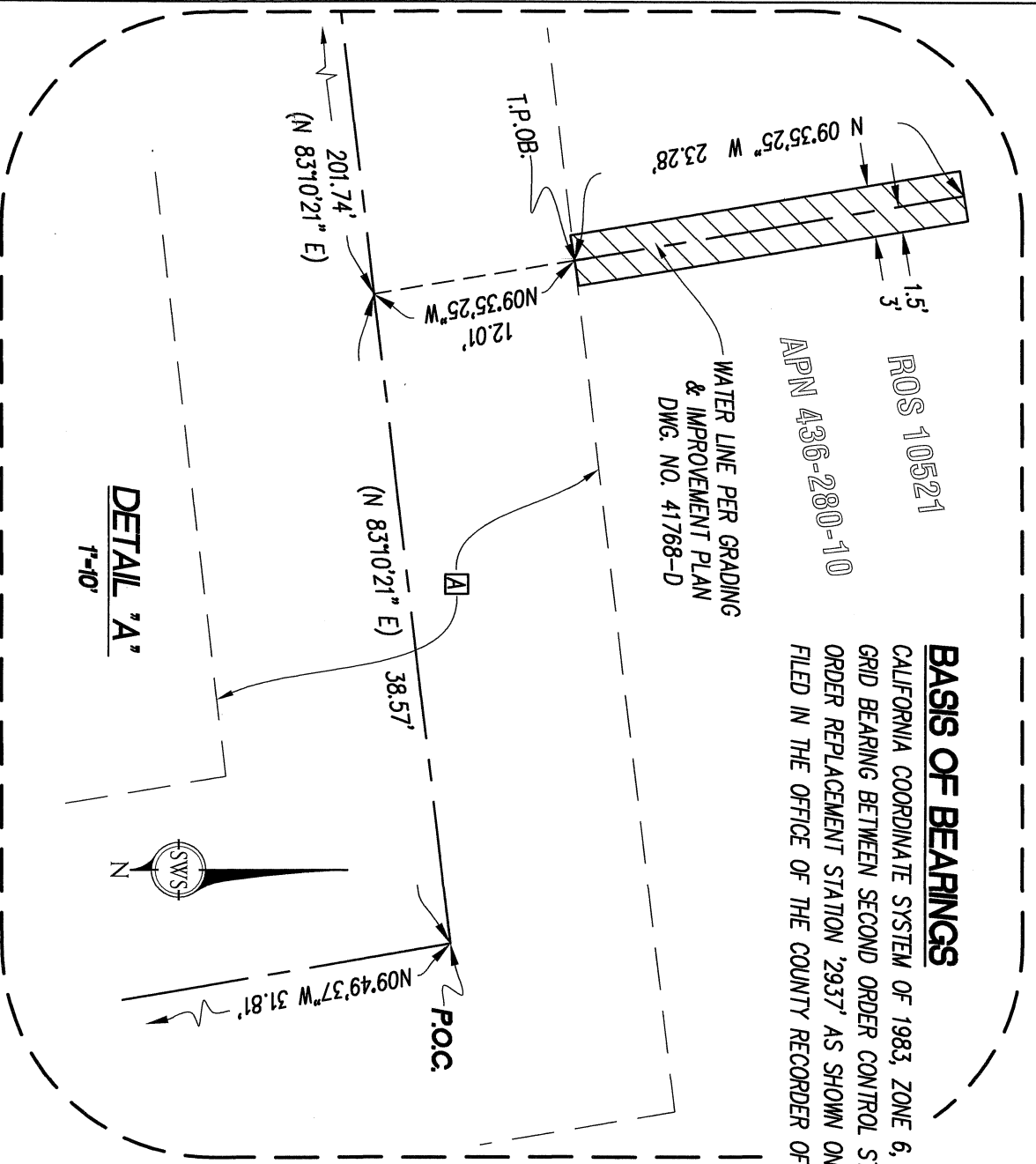
PL-288

APN 436-280-10

DATA TABLE	
L1	(N 06° 32' 09" W) (14.41')
L2	(N 51° 41' 40" W) (35.30')

BASIS OF BEARINGS

CALIFORNIA COORDINATE SYSTEM OF 1983, ZONE 6, EPOCH 1991.35 ADJUSTED, GRID BEARING BETWEEN SECOND ORDER CONTROL STATION '936' AND SECOND ORDER REPLACEMENT STATION '2937' AS SHOWN ON RECORD OF SURVEY 14492 FILED IN THE OFFICE OF THE COUNTY RECORDER OF SAN DIEGO COUNTY.



SWS ENGINEERING, INC.
 1635 LAKE SAN MARCOS DR., SUITE 200
 SAN MARCOS, CA 92078
 (760) 744-0011

Deyan Pantich
 DEYAN PANTICH, PLS
 DATE 12/8/20



DOCUMENT NO. 2021-0364005
 RECORDED MAY 12, 2021

WATER EASEMENT

PORTION OF PUEBLO LOT 288, PUEBLO LANDS OF SAN DIEGO, PER MM 36

DESCRIPTION	BY	APPROVED	DATE	FILMED	CITY OF SAN DIEGO, CALIFORNIA	PTS
ORIGINAL	SWS				SHEET 1 OF 1 SHEET	676038
						I.O. N/A
						1860-6269
						CCS 83 COORDINATES
						220-1709
						NAD 27 COORDINATES
						DWG. NO. 42135-1-B

COMPLETED

STATUS