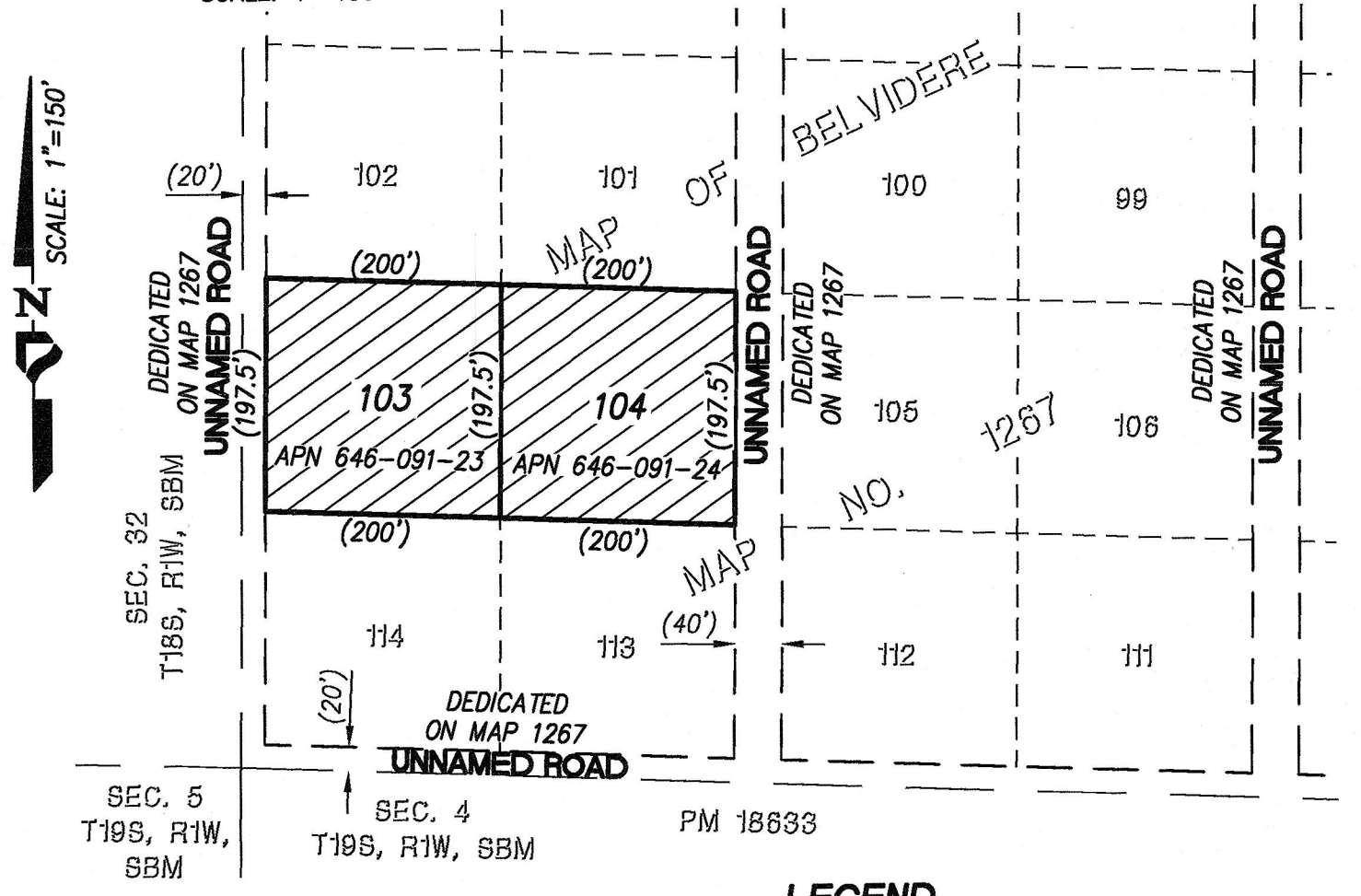


EXHIBIT 'B'



LEGEND

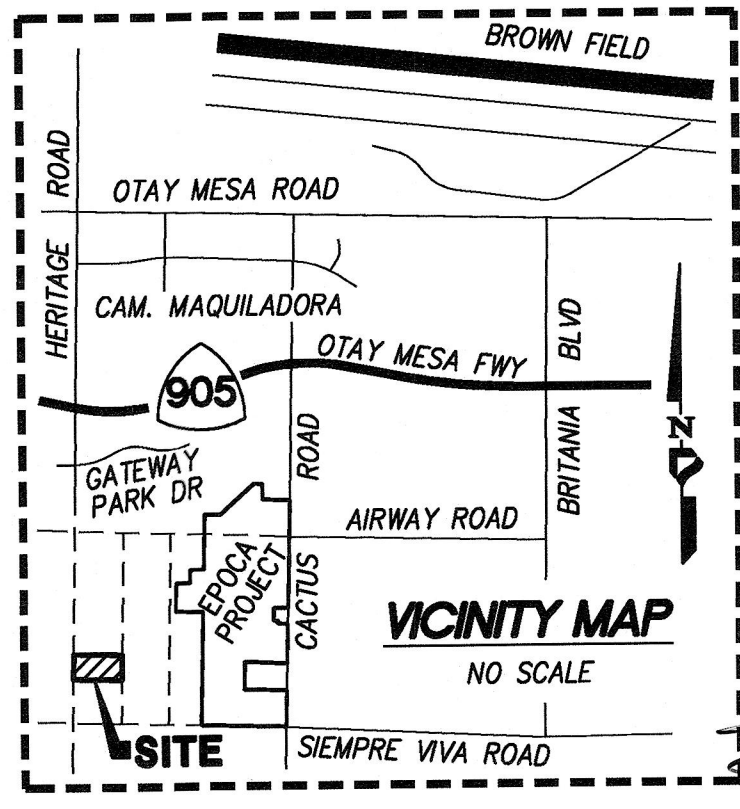
- INDICATES MSCP/MHPA OPEN SPACE IN FEE TO THE CITY OF SAN DIEGO
AREA = 78,981 SQ.FT. OR 1.81 AC. MORE OR LESS
- () INDICATES RECORD DATA PER MAP NO. 1267
- — — — — INDICATES MAP NO. 1267 RECORD BOUNDARY
- - - - - INDICATES MAP NO. 1267 RECORD RIGHTS-OF-WAY
- --- --- INDICATES MAP NO. 1267 RECORD LOT LINES

ASSESSOR'S PARCEL NO.

- 646-091-23
- 646-091-24

REFERENCE DRAWINGS

- MAP NO. 1267
- PARCEL MAP NO. 18633



Sean C. Squire 10-14-2021
SEAN C. SQUIRE, L.S. 9601 DATE

PROJECT DESIGN CONSULTANTS
701 B Street, Suite 800 San Diego, CA 92101
619.235.6471 Tel 619.234.0349 Fax

DOCUMENT NO.: 2021-0776575
RECORDED: Nov. 09, 2021

MSCP/MHPA OPEN SPACE IN FEE
FOR PROTECTION OF ENVIRONMENTALLY SENSITIVE LANDS WITHIN THE
MULTIPLE SPECIES CONSERVATION PROGRAM MULTI-HABITAT PLANNING AREA
LOTS 103 AND 104 PER MAP OF BELVIDERE
MAP NO. 1267

DESCRIPTION	BY	APPRVD.	DATE	FILMED
ORIGINAL	PDC	so.	11/10/2021	
ACQUIRED		STATUS		

CITY OF SAN DIEGO, CALIFORNIA
SHEET 1 OF 1 SHEETS
Timothy R. ... 10/27/2021
FOR CITY ENGINEER DATE

P.T.S. NO. 677953
I.O. NO. N/A
1740-6329
CCS83 COORDINATES
140-1769
LAMBERT COORDINATES
42161-1-B