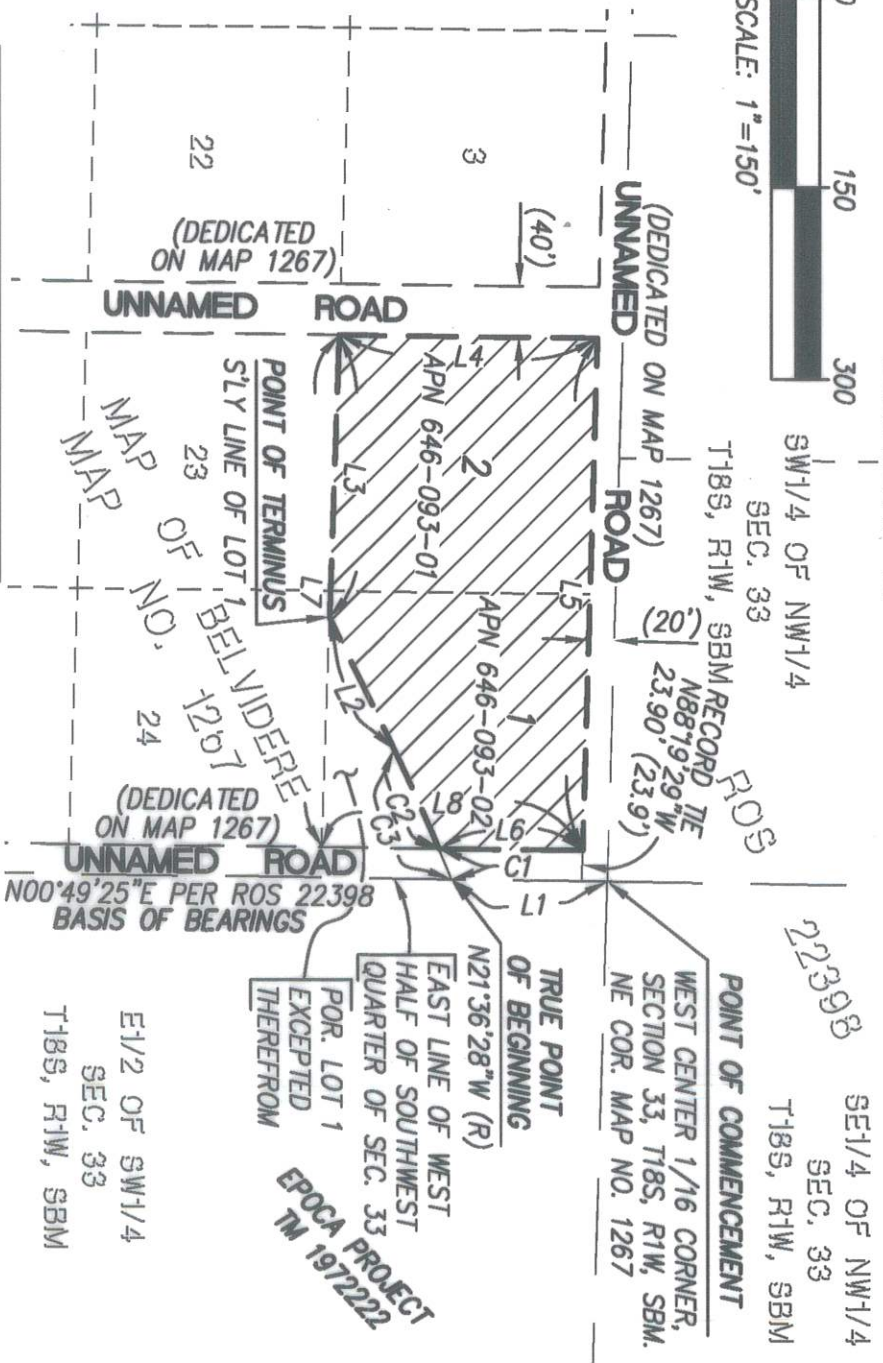


EXHIBIT "B"

SCALE: 1"=150'



LINE DATA TABLE

NO.	BEARING	LENGTH
L1	S00°49'25"W	121.83'
L2	S63°56'46"W	113.89'
L3	N87°58'46"W	221.06'
L4	N00°43'15"E	201.34'
		(201.00')
L5	S88°19'29"E	400.07'
		(400')
L6	S00°43'47"W	112.22'
L7	N87°58'46"W	400.09'
		(400')
L8	N00°43'47"E	203.75'
		(203.26')

CURVE DATA TABLE

NO.	DELTA	RADIUS	LENGTH
C1	Δ=01°01'49"	1432.00'	25.75'
C2	Δ=03°24'57"	1432.00'	85.37'
C3	Δ=04°26'46"	1432.00'	111.12'

LEGEND

INDICATES IRREVOCABLE OFFER OF DEDICATION IN FEE TITLE FOR MHPA COVENANT OF EASEMENT RECORDED Oct 27, 2021 AS DOCUMENT NO. 2021-0718361, O.R. CONTAINS 1.668 ACRES, MORE OR LESS

() INDICATES RECORD DATA PER MAP NO. 1267

BASIS OF BEARINGS

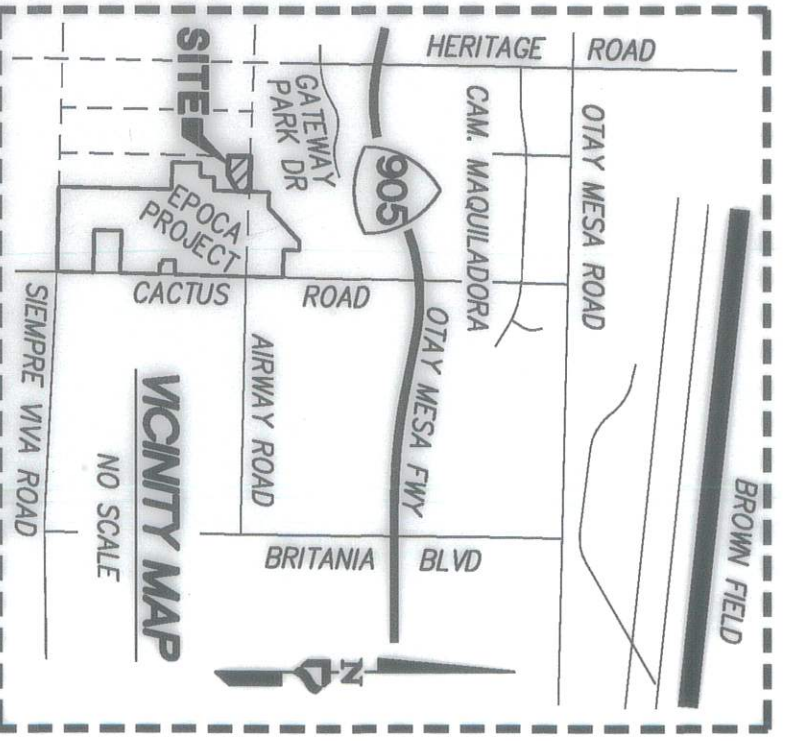
THE BASIS OF BEARINGS FOR THIS PLAT IS THE EAST LINE OF THE WEST HALF OF THE SOUTHWEST QUARTER OF SECTION 33, TOWNSHIP 18 SOUTH, RANGE 1 WEST, AS SHOWN ON RECORD OF SURVEY NO. 22398.
I.E. NORTH 00°49'25" EAST

ASSESSOR'S PARCEL NO.

- 646-093-01
- 646-093-02

REFERENCE DRAWINGS

- MAP NO. 1267
- ROS NO. 22398
- ROS NO. 22432
- CITY DWG. NO. 41791-D



SEAN C. SQUIRE, L.S. 9601
DATE 10-14-2021

PROJECT DESIGN CONSULTANTS
701 B Street, Suite 800
San Diego, CA 92101
619.235.0471 Tel
619.234.0349 Fax

DOCUMENT NO.: 2021-07184881
RECORDED: Nov 12, 2021

IRREVOCABLE OFFER OF DEDICATION IN FEE TITLE

FOR PROTECTION OF ENVIRONMENTALLY SENSITIVE LANDS WITHIN THE MULTIPLE SPECIES CONSERVATION PROGRAM MULTI-HABITAT PLANNING AREA FOR LOT 1 TOGETHER WITH LOT 2 MAP OF BELVIDERE, MAP NO. 1267

DESCRIPTION	BY	APPRVD.	DATE	FILMED	P.T.S. NO.	NO.	0677425
ORIGINAL	PDC				I.O. NO.	N/A	
					1784-6329		
					CCS83 COORDINATES	144-1769	
					LAMBERT COORDINATES		

COMPLETED STATUS

CITY OF SAN DIEGO, CALIFORNIA
SHEET 1 OF 1 SHEETS
FOR CITY ENGINEER Fuller, R. R. DATE 10/13/21
42163-B