

EXHIBIT "B"

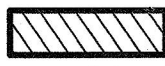
REFERENCE DRAWINGS:

MAP 12785, MAP 12786, MAP 12787,
MAP 12788, PM 17814, 25080-D, AND
25211-D

ASSESSOR'S PARCEL NO.:

314-460-17 & 319-460-21

LEGEND:



INDICATES IRREVOCABLE OFFER OF DEDICATION EASEMENT
ACQUIRED: 1,436 SQUARE FEET (0.033 ACRES)

()

INDICATES RECORD OR CALCULATED DATA PER MAP NO. 12788

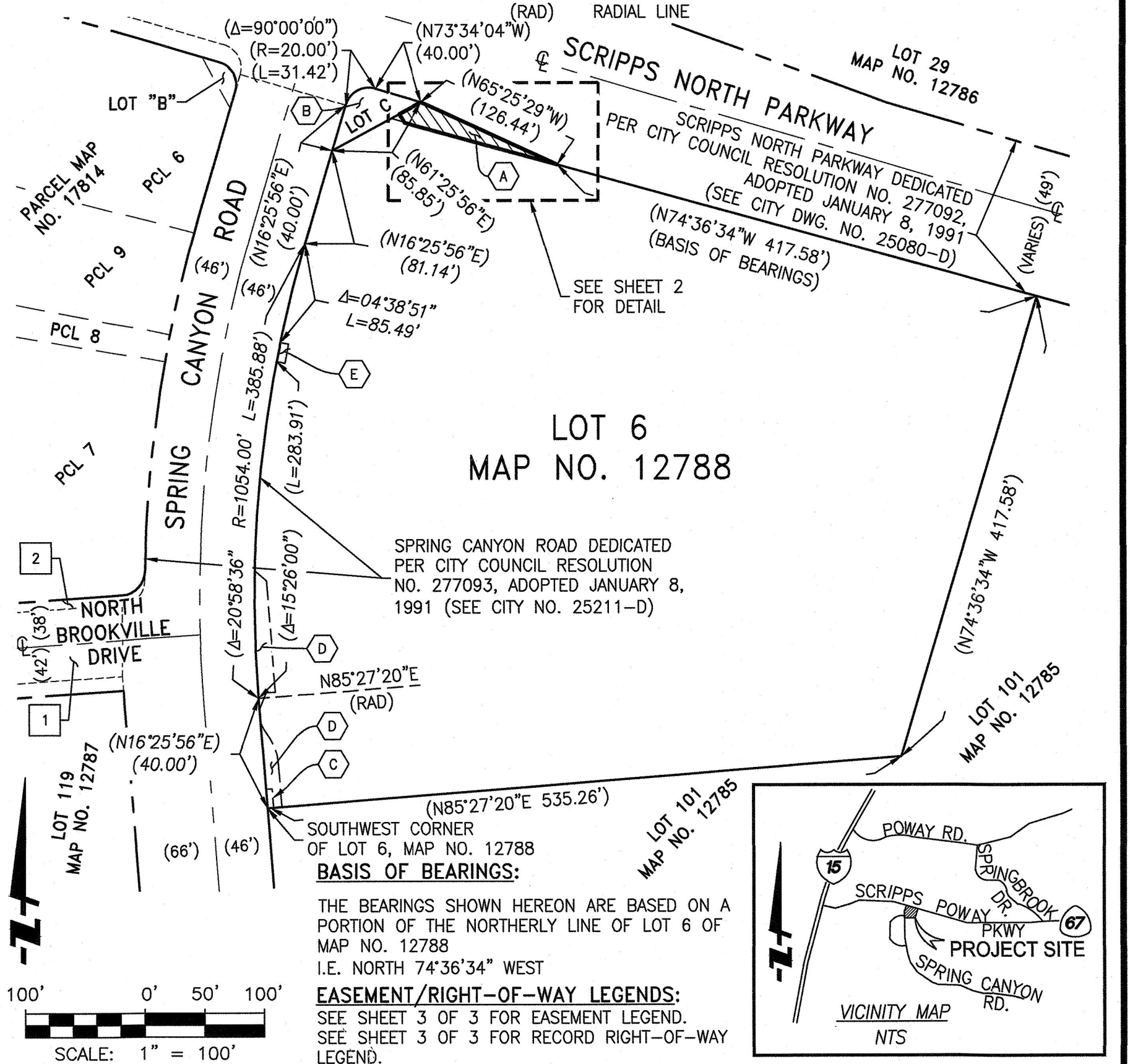
— SUBJECT PROPERTY LINES

— CENTERLINES

— STREET RIGHT-OF-WAY

— LOT LINES

— RADIAL LINE



FUSCOE
ENGINEERING

16795 Von Karman, Suite 100, Irvine, California 92606
tel 949.474.1960 fax 949.474.5315 www.fuscoe.com

J. Marty Smith
J. MARTY SMITH, LS 8070

3/10/2021
DATE



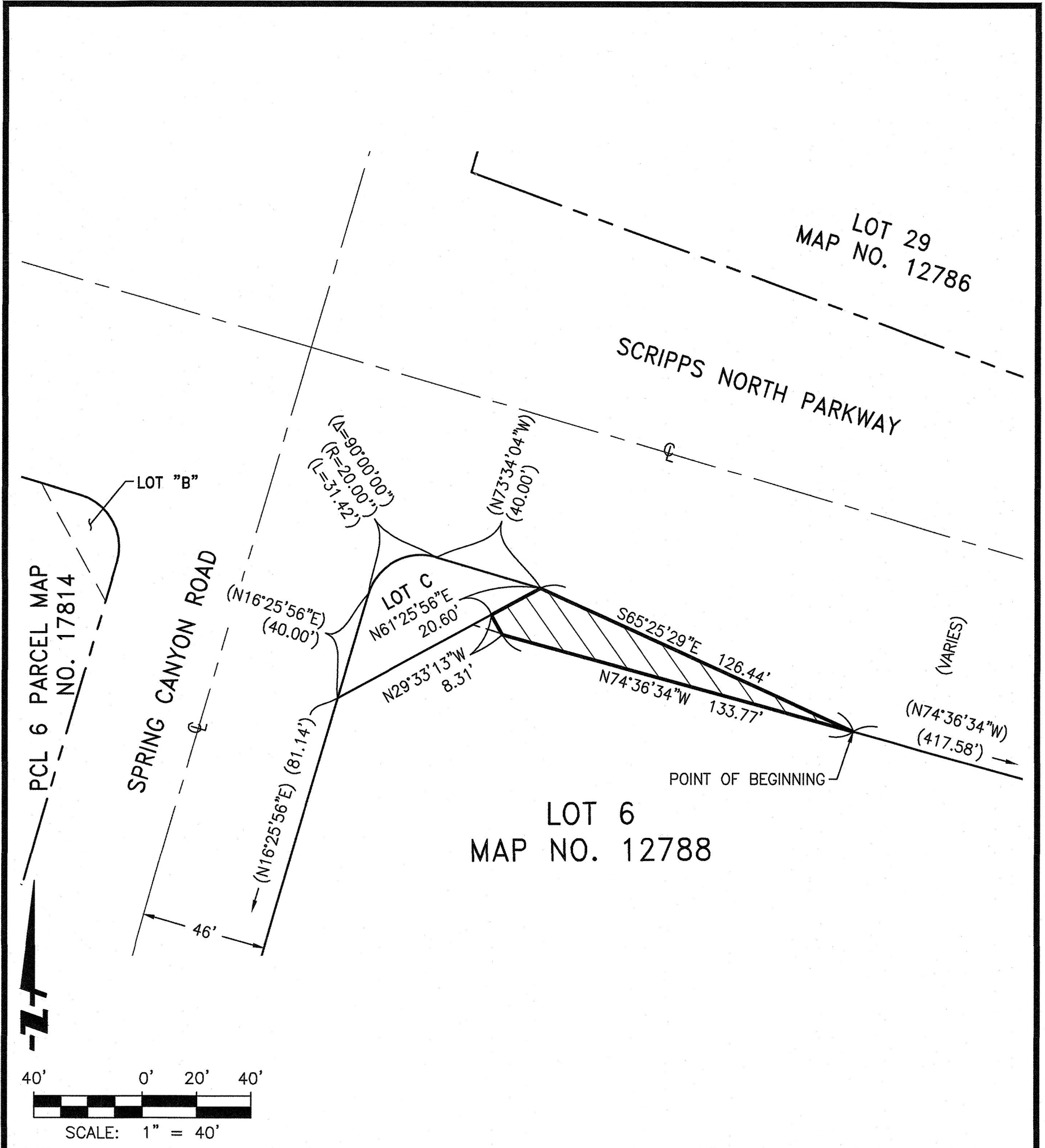
DOCUMENT NO.: 2022-0462864

RECORDED: DECEMBER 8, 2022

IRREVOCABLE OFFER OF DEDICATION
IN A PORTION OF LOT 6, MAP NO. 12788

DESCRIPTION	BY	APPROVED	DATE	FILMED	CITY OF SAN DIEGO, CALIFORNIA SHEET 1 OF 3	P.T.S. NO. 652763
ORIGINAL	FEI					
					<i>Richard R. 1/17</i> FOR CITY ENGINEER	1920-6299
					DATE	NAD 83 COORDINATES
					LAND SURVEYOR	280-1739
						LAMBERT COORDINATES
						42183-1-B
STATUS						

EXHIBIT "B"



FUSCOE
ENGINEERING

16795 Von Karman, Suite 100, Irvine, California 92606
tel 949.474.1960 • fax 949.474.5315 • www.fuscoe.com

DOCUMENT NO.: _____

RECORDED: _____

IRREVOCABLE OFFER OF DEDICATION
IN A PORTION OF LOT 6, MAP NO. 12788

DESCRIPTION	BY	APPROVED	DATE	FILMED	CITY OF SAN DIEGO, CALIFORNIA SHEET 2 OF 3		P.T.S. NO. 652763
ORIGINAL	FEI						1920-6299
					<i>Paul R. ...</i> FOR CITY ENGINEER	11/30/2012 DATE	NAD 83 COORDINATES
					LAND SURVEYOR		280-1739
							LAMBERT COORDINATES
							42183-2-B
STATUS							

EXHIBIT "B"

EASEMENT LEGEND

- ⬡ AN EASEMENT FOR LANDSCAPING WITH THE RIGHT OF INGRESS, EGRESS AND INCIDENTAL PURPOSES AS DELINEATED AND DESIGNATED ON MAP NO. 12788.
- ⬡ THE RELINQUISHMENT OF ALL RIGHTS TO CONSTRUCT, ERECT OR MAINTAIN ANY ABOVEGROUND ROOFED BUILDING OR COVERED STRUCTURE OVER, UPON OR ACROSS ALL OF LOT C AS SHOWN ON MAP NO. 12788 AS "BUILDING RESTRICTED EASEMENT".
- ⬡ AN EASEMENT FOR UNDERGROUND COMMUNICATION FACILITIES (INCLUDING INGRESS THERETO AND EGRESS THEREFROM) CONSISTING OF WIRES, CABLES, CONDUITS, MANHOLES, HANDHOLES AND ABOVE GROUND MARKERS, PEDESTALS, TERMINAL EQUIPMENT CABINETS, OTHER ASSOCIATED ELECTRICAL CONDUCTORS AND NECESSARY FIXTURES AND INCIDENTAL PURPOSES IN FAVOR OF PACIFIC BELL, A CALIFORNIA CORPORATION, RECORDED JANUARY 15, 1992 AS FILE NO. 1992-0021973 OF OFFICIAL RECORDS.
- AN AGREEMENT BETWEEN THE CITY OF SAN DIEGO AND MCMILLIN-BCED/MIRAMAR RANCH NORTH, A CALIFORNIA GENERAL PARTNERSHIP, OWNER, RECORDED FEBRUARY 28, 1991 AS FILE NO. 91-0087486 OF OFFICIAL RECORDS, RELATING TO THE INSTALLATION, MAINTENANCE AND POSSIBLE REMOVAL OF PRIVATE STORM DRAIN, SUBJECT TO THE TERMS, COVENANTS AND CONDITIONS CONTAINED THEREIN. (NOT PLOTTABLE)
- AN AGREEMENT BETWEEN THE CITY OF SAN DIEGO AND MCMILLIN-BCED/MIRAMAR RANCH NORTH, A CALIFORNIA GENERAL PARTNERSHIP, OWNER, RECORDED FEBRUARY 28, 1991 AS FILE NO. 91-0087488 OF OFFICIAL RECORDS, RELATING TO THE INSTALLATION, MAINTENANCE AND POSSIBLE REMOVAL OF PRIVATE STORM DRAIN, SUBJECT TO THE TERMS, COVENANTS AND CONDITIONS CONTAINED THEREIN. (NOT PLOTTABLE)
- ⬡ PUBLIC STREET EASEMENTS PER DOCUMENT NO. 2022-0462833, RECORDED DECEMBER 8, 2022, IN OFFICIAL RECORDS.
- ⬡ PUBLIC WATER EASEMENT PER DOCUMENT NO. 2022-0462846, RECORDED DECEMBER 8, 2022, IN OFFICIAL RECORDS.

RECORD RIGHT-OF-WAY LEGEND

- LIMITS OF RECORD RIGHTS-OF-WAY
- 1 NORTH BROOKVILLE DRIVE DEDICATED PER MAP NO. 12787.
- 2 NORTH BROOKVILLE DRIVE DEDICATED PER PARCEL MAP NO. 17814.



FUSCOE
ENGINEERING
16795 Von Karman, Suite 100, Irvine, California 92606
tel 949.474.1960 • fax 949.474.5315 • www.fuscoe.com

DOCUMENT NO.: _____
RECORDED: _____

**IRREVOCABLE OFFER OF DEDICATION
IN A PORTION OF LOT 6, MAP NO. 12788**

DESCRIPTION	BY	APPROVED	DATE	FILMED	CITY OF SAN DIEGO, CALIFORNIA SHEET 3 OF 3	P.T.S. NO. 652763
ORIGINAL	FEI					
					<i>Julia R. King</i> FOR CITY ENGINEER	1920-6299 NAD 83 COORDINATES
					LAND SURVEYOR	280-1739 LAMBERT COORDINATES
						42183-3-B
					STATUS	