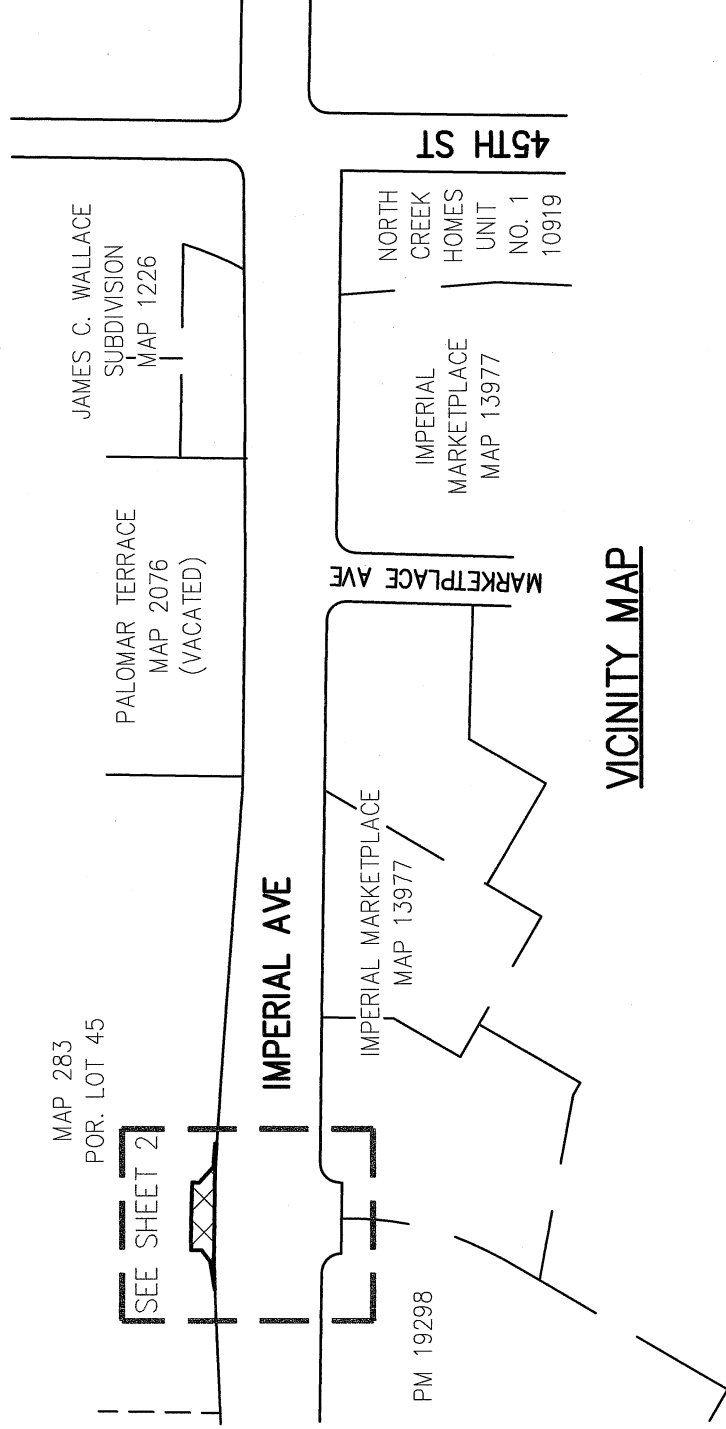


EXHIBIT "B"



VICINITY MAP

LEGEND



PUBLIC STREET EASEMENT ACQUIRED,
AREA = 2,023 SQ. FT. (0.046 AC), MORE OR LESS

POINT OF BEGINNING

P.O.B.

E1

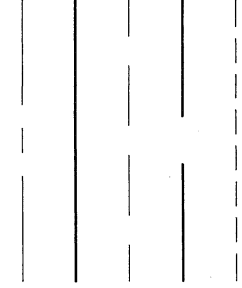
EASEMENT FOR COUNTY HIGHWAY GRANTED TO THE
COUNTY OF SAN DIEGO REC. 4/14/1975 AT F/P
NO. 75-085484 O.R.

[]

RECORD DATA (OR CALCULATED THEREFROM) PER E1
FOUND 2.5" BRASS DISC STAMPED "MTDB LS 6000
CONTROL POINT" PER ROS 16575

●

MULTIPLY DISTANCE BY 0.99998825
TO OBTAIN GROUND DISTANCES



CENTERLINE

RIGHT-OF-WAY LINE

OLD RIGHT-OF-WAY LINE

LOT LINE

TIE LINE



1" = 200'

CONVERGENCE ANGLE

AT GPS STA. NO. 19: CONV.
ANGLE = -0°27'43.67"

BASIS OF BEARINGS

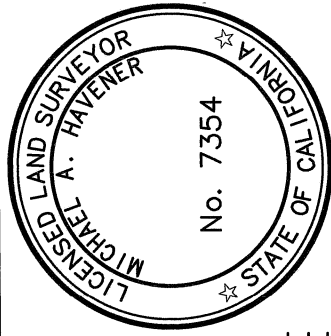
THE BASIS OF BEARINGS FOR THIS DRAWING IS THE CALIFORNIA COORDINATE SYSTEM, CS83, ZONE 6, EPOCH (1991.35) AND IS DETERMINED BY G.P.S. MEASUREMENTS TAKEN ON 6/15/2018 AND WERE ESTABLISHED FROM G.P.S. STATION NO. 1 AND G.P.S. STATION NO. 19 PER ROS 16575. THE BEARING FROM G.P.S. STATION NO. 1 TO G.P.S. STATION NO. 19 IS N 85°22'32" E.

QUOTED BEARINGS FROM REFERENCE MAPS OR DEEDS MAY OR MAY NOT BE IN TERMS OF SAID SYSTEM.

THE COMBINED GRID FACTOR AT G.P.S. STATION NO. 19 IS 1.00001175. GRID DISTANCE = GROUND DISTANCE X COMBINED GRID FACTOR. ELEVATION AT G.P.S. STATION NO. 19 IS 138.29 (MSL DATUM).

REFERENCES

MAP NO. 283
MAP NO. 13977
MAP NO. 6056
MAP NO. 9615
PM 19298
DWG. 13985-D
F/P NO. 75-085484



AGUIRRE & ASSOCIATES
8363 CENTER DRIVE, SUITE 5A
LA MESA CA 91942 (619) 464-6978

Michael Aguirre 8-18-21
MICHAEL A. HAVENER L.S. 7354 DATE

DOCUMENT No. **2023-0200041**

RECORDED **JULY 27, 2023**

PUBLIC STREET EASEMENT

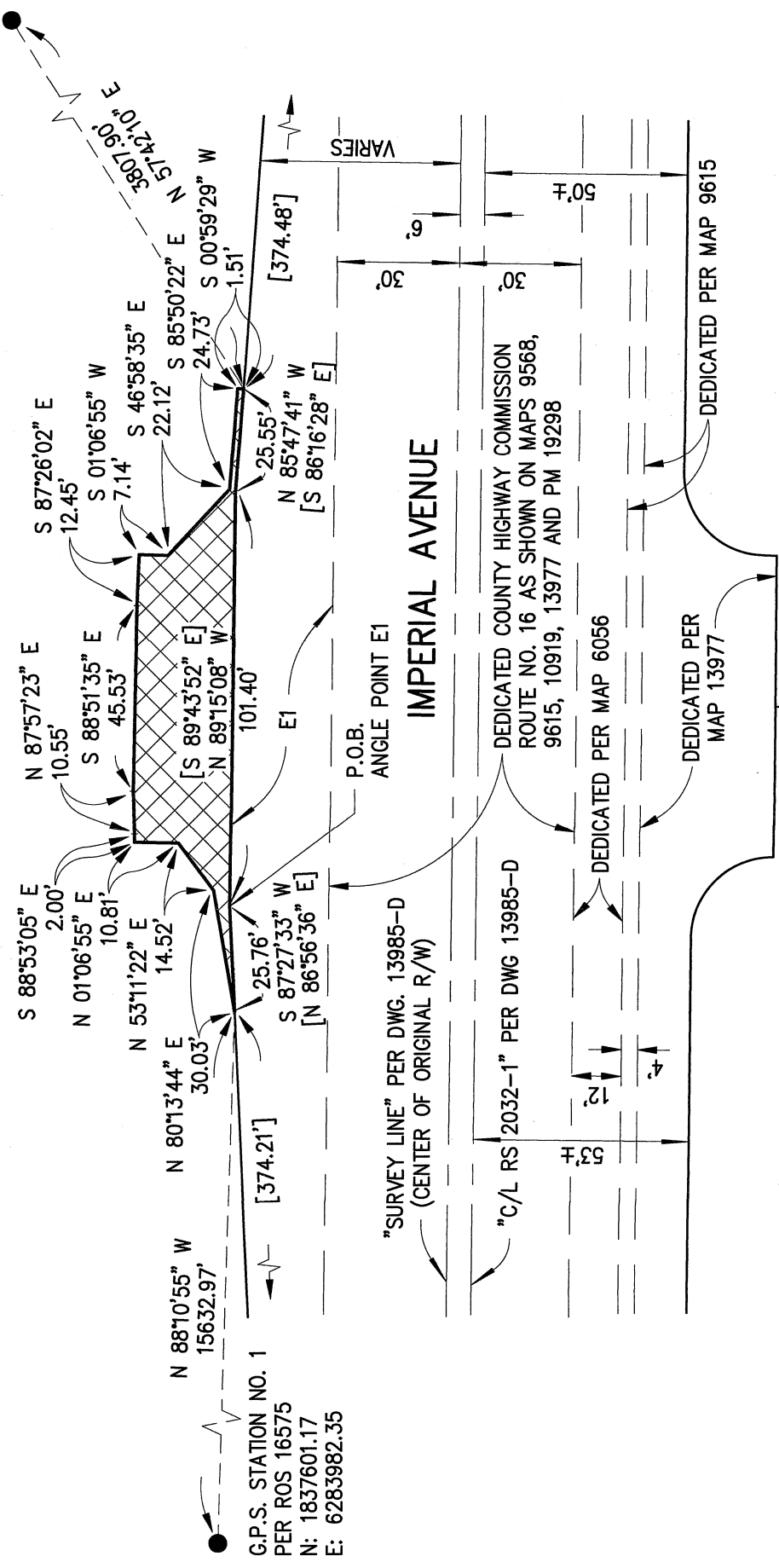
LOT 45 OF HORTON'S PURCHASE OF EX-MISSION LANDS OF SAN DIEGO, IN THE CITY OF SAN DIEGO, COUNTY OF SAN DIEGO, STATE OF CALIFORNIA, ACCORDING TO MAP THEREOF NO. 283

DESCRIPTION	BY	APPROVED DATE	FILMED	CITY OF SAN DIEGO, CALIFORNIA	PTS 671857
ORIGINAL	KA			SHEET 1 OF 2 SHEETS	I.O. N/A
		2/25/22			1656-6297
					CCS 83 COORDINATES
					196-1737
					NAD 27 COORDINATES
COMPLETED					42193-1-B

EXHIBIT "B"

HORTON'S PURCHASE MAP 283 POR. 45
546-150-10

G.P.S. STATION NO. 19
PER ROS 16575
N: 1839137.77
E: 6302978.83



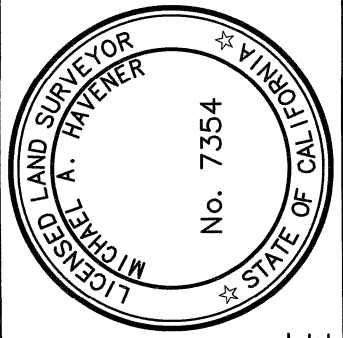
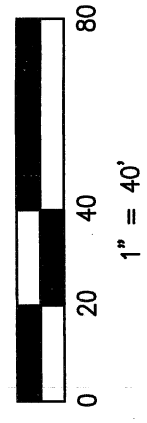
PM 19298
PARCEL 2

SEE LEGEND SHEET 1



CONVERGENCE ANGLE
AT GPS STA. NO. 19: CONV.
ANGLE = -0°27'43.67"

MULTIPLY DISTANCE BY 0.99998825
TO OBTAIN GROUND DISTANCES



AGUIRRE & ASSOCIATES
8363 CENTER DRIVE, SUITE 5A
LA MESA CA 91942 (619) 464-6978

Michael A. Havener 8-18-21
MICHAEL A. HAVENER L.S. 7354 DATE

DOCUMENT No. 2023-0200041
RECORDED JULY 27, 2023

PUBLIC STREET EASEMENT

LOT 45 OF HORTON'S PURCHASE OF EX-MISSION LANDS OF SAN DIEGO, IN THE CITY OF SAN DIEGO, COUNTY OF SAN DIEGO, STATE OF CALIFORNIA, ACCORDING TO MAP THEREOF NO. 283

DESCRIPTION	BY	APPROVED DATE	FILMED	CITY OF SAN DIEGO, CALIFORNIA	PTS 671857
ORIGINAL	KA			SHEET 2 OF 2 SHEETS	I.O. N/A
	CEJ	8/18/21			1656-6297
					CCS 83 COORDINATES
					196-1737
					NAD 27 COORDINATES
					42193-2-B

COMPLETED

STATUS