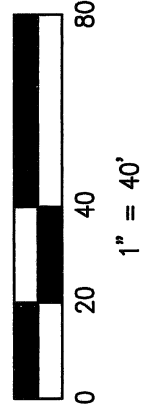


EXHIBIT "B"

G.P.S. STATION NO. 19
 PER ROS 16575
 N: 1839137.77
 E: 6302978.83



CONVERGENCE ANGLE
 AT GPS STA. NO. 19: CONV.
 ANGLE=-0°27'43.67"

DEDICATED PER MAP 1226
 (FORMERLY VISTA STREET)

45TH STREET

DEDICATED PER BK. 1308,
 PG. 111 OF DEEDS, REC.
 1/4/1927

DEDICATED PER BK. 3576,
 PG. 361 REC. 4/12/1950
 O.R.

DEDICATED PER BK. 2457,
 PG. 315 REC. 7/24/1947
 O.R.

NORTH CREEK
 HOMES
 MAP 10919
 UNIT NO. 1
 LOT 1

IMPERIAL MARKETPLACE
 MAP 13977
 LOT 7

PUBLIC STREET EASEMENT ACQUIRED
 AREA = 484 SQ. FT. (0.011 ACRES),
 MORE OR LESS

P.O.C.
 T.P.O.B.
 DD1
 DD2

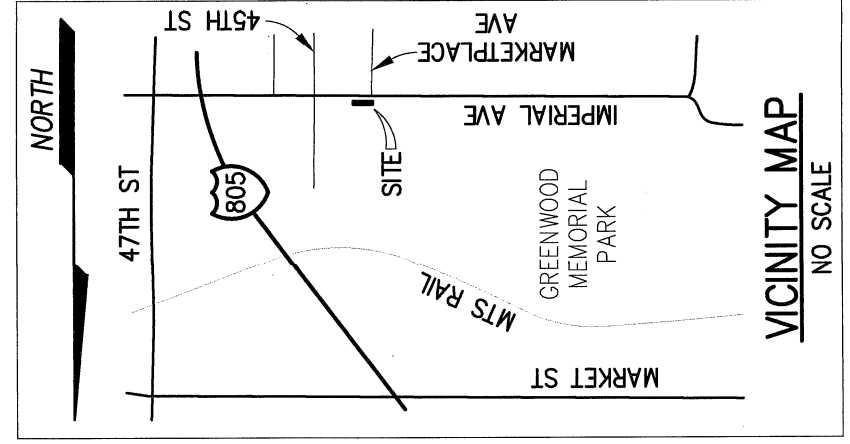
POINT OF COMMENCEMENT
 TRUE POINT OF BEGINNING
 GRANT DEED TO THE COUNTY
 OF SAN DIEGO REC. 2/19/71
 AS F/P NO. 31887 O.R.
 GRANT DEED TO THE COUNTY
 OF SAN DIEGO REC. 2/19/71
 AS F/P NO. 31888 O.R.

E
 SEE SHEET 2 FOR EXISTING
 EASEMENT LEGEND

●
 FOUND 2.5" BRASS DISC STAMPED
 "MTDB LS 6000 CONTROL POINT"
 PER ROS 16575

— — — — — CENTERLINE
 — — — — — RIGHT-OF-WAY LINE
 — — — — — OLD RIGHT-OF-WAY LINE
 — — — — — LOT LINE
 - - - - - TIE LINE
 - - - - - EASEMENT LINE

A.P.N. 546-150-12



JAMES C.
 WALLACE'S
 SUBDIVISION
 MAP 1226
 LOT 18

P.O.C.
 EAST COR. COMMON
 TO PAR. 69369-A
 AND PAR. 69369-B
 PER DD1

PAR. 69369-B
 PER DD1

PER DD1

C/L RS 2032-1 AS
 SHOWN ON DWG 13985-D

N 89°15'08" W

N 0°44'59" E

30'

32' PER DD1

S 89°42'49" W

30'

N 89°42'49" E

S LINE LOT 18

65'

35'

MATCH LINE - SEE SHEET 2

MULTIPLY DISTANCE BY 0.99998825
 TO OBTAIN GROUND DISTANCES

BASIS OF BEARINGS

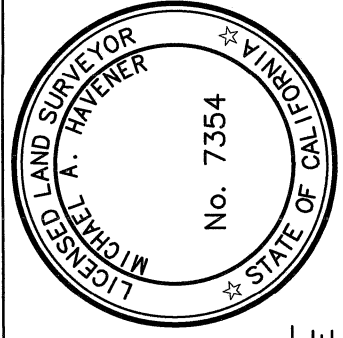
THE BASIS OF BEARINGS FOR THIS DRAWING IS THE CALIFORNIA COORDINATE SYSTEM, CCS83, ZONE 6, EPOCH (1991.35) AND IS DETERMINED BY G.P.S. MEASUREMENTS TAKEN ON 6/15/2018 AND WERE ESTABLISHED FROM G.P.S. STATION NO. 1 AND G.P.S. STATION NO. 19 PER ROS 16575. THE BEARING FROM G.P.S. STATION NO. 1 TO G.P.S. STATION NO. 19 IS N 85°22'32" E.

QUOTED BEARINGS FROM REFERENCE MAPS OR DEEDS MAY OR MAY NOT BE IN TERMS OF SAID SYSTEM.

THE COMBINED GRID FACTOR AT G.P.S. STATION NO. 19 IS 1.00001175. GRID DISTANCE = GROUND DISTANCE X COMBINED GRID FACTOR. ELEVATION AT G.P.S. STATION NO. 19 IS 138.29 (MSL DATUM).

AGUIRE & ASSOCIATES
 8363 CENTER DRIVE, SUITE 5A
 LA MESA CA 91942 (619) 464-6978

Michael A. Havener 8-18-21
 MICHAEL A. HAVENER L.S. 7354 DATE



DOCUMENT No. **2023-0203011**

RECORDED **JULY 28, 2023**

PUBLIC STREET EASEMENT

PORTION OF LOT 1 OF JAMES C. WALLACE'S SUBDIVISION OF THE EAST HALF OF LOT 45 OF HORTON'S PURCHASE IN THE EX-MISSION LANDS OF SAN DIEGO, MAP 1226

DESCRIPTION	BY	APPROVED DATE	FILMED	CITY OF SAN DIEGO, CALIFORNIA	PTS 671858
ORIGINAL	MH			SHEET 1 OF 2 SHEETS	I.O. N/A
					1836-6297
					CCS 83 COORDINATES
					196-1737
					NAD 27 COORDINATES
					42194-1-B

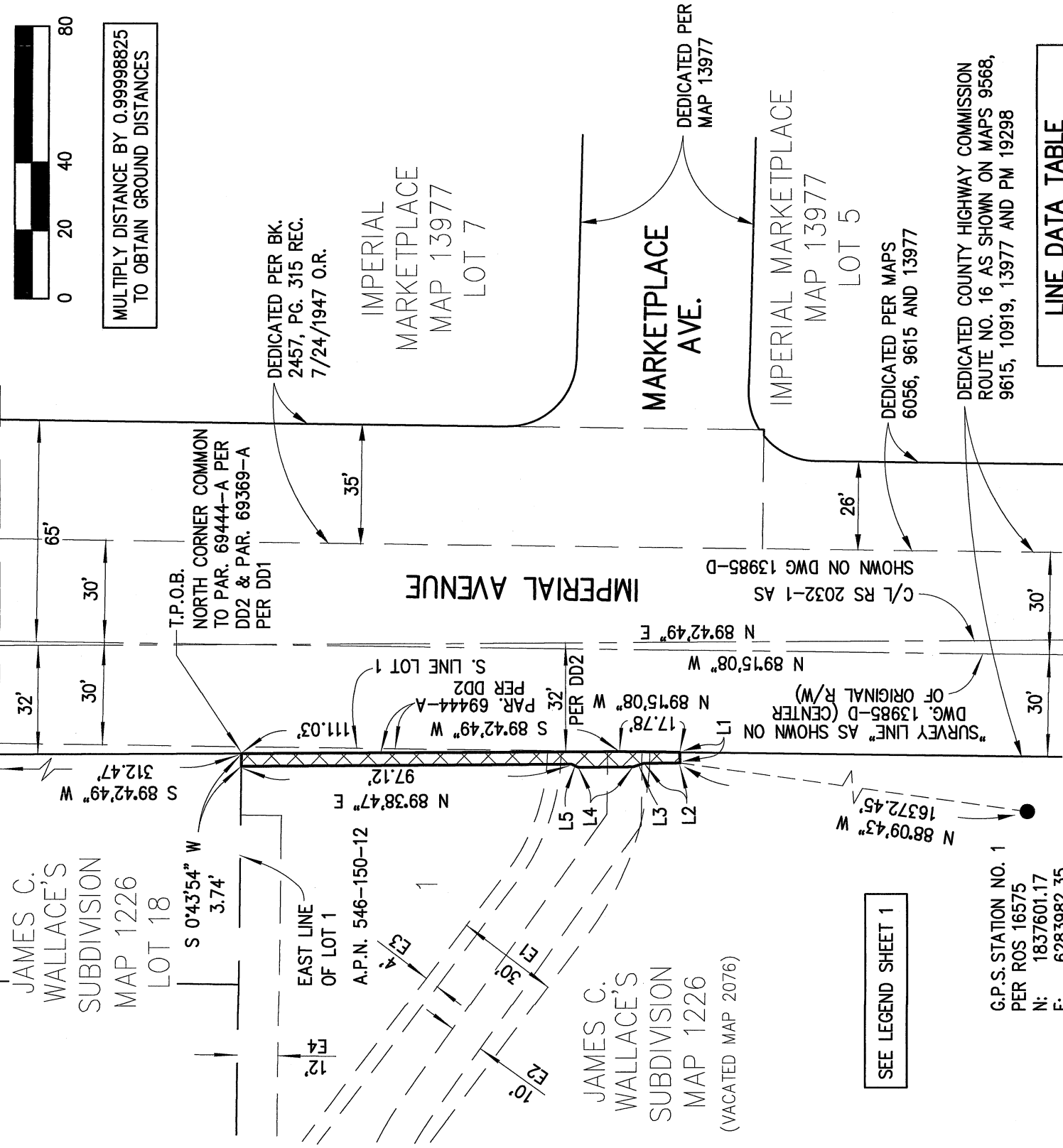
COMPLETED

STATUS

EXHIBIT "B"



MATCH LINE - SEE SHEET 1



MULTIPLY DISTANCE BY 0.99998825 TO OBTAIN GROUND DISTANCES

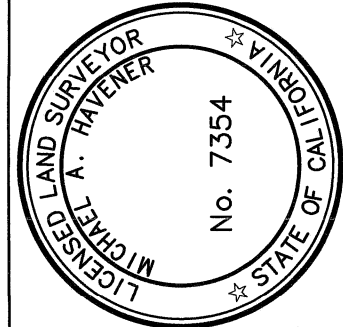
SEE LEGEND SHEET 1

G.P.S. STATION NO. 1
 PER ROS 16575
 N: 1837601.17
 E: 6283982.35

NO.	BEARING	DISTANCE
L1	N 1°27'54" W	3.13'
L2	N 89°30'21" E	10.81'
L3	N 71°16'09" E	3.18'
L4	N 89°30'21" E	16.11'
L5	S 63°55'45" E	2.11'

EXISTING EASEMENT LEGEND

- E1 EASEMENT FOR PRIVATE ROAD AND PRIVATE WATER PIPE PURPOSES REC. 6/01/1944 IN BOOK 1693, PAGE 17 O.R.
- E2 EASEMENT TO SDG&E REC. 9/27/1944 IN BOOK 1757, PAGE 33 O.R.
- E3 EASEMENT TO SDG&E REC. 9/27/1944 IN BOOK 1757, PAGE 30 O.R.
- E4 EASEMENT TO SDG&E REC. 3/5/1928 IN BOOK 1441, PAGE 304 OF DEEDS



AGUIRRE & ASSOCIATES
 8363 CENTER DRIVE, SUITE 5A
 LA MESA CA 91942 (619) 464-6978

Michael A. Havener 8-18-21
 MICHAEL A. HAVENER L.S. 7354 DATE

DOCUMENT No. **2023-0203011**
 RECORDED **JULY 28, 2023**

PUBLIC STREET EASEMENT

PORTION OF LOT 1 OF JAMES C. WALLACE'S SUBDIVISION OF THE EAST HALF OF LOT 45 OF HORTON'S PURCHASE IN THE EX-MISSION LANDS OF SAN DIEGO, MAP 1226

DESCRIPTION	BY	APPROVED DATE	FILMED	CITY OF SAN DIEGO, CALIFORNIA	PTS 671858
ORIGINAL	MH			SHEET 2 OF 2 SHEETS	I.O. N/A
					1836-6297
					CCS 83 COORDINATES
					196-1737
					NAD 27 COORDINATES

COMPLETED STATUS

42194-2-B