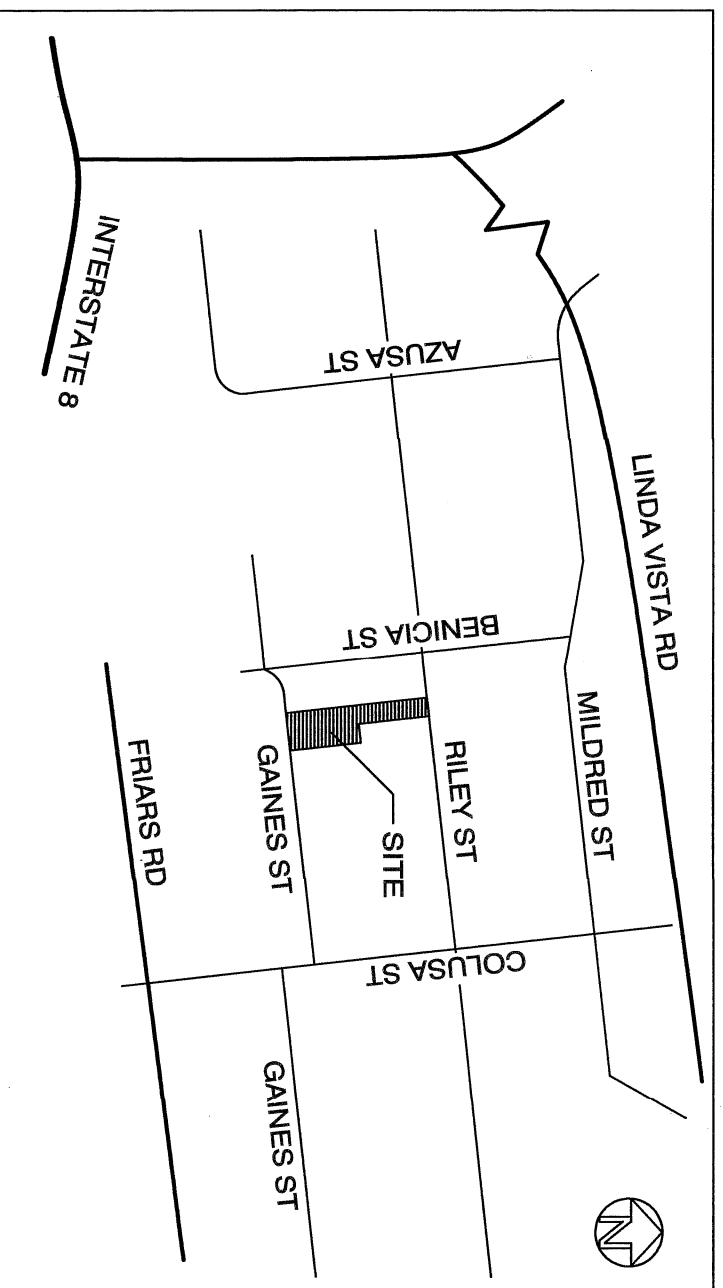


EXHIBIT "B"



VICINITY MAP

NOT TO SCALE

BASIS OF BEARINGS:

THE SOUTHERLY RIGHT OF WAY LINE
OF RILEY STREET AS SHOWN ON
MAP NO. 1654, I.E. N75°17' E

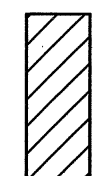
REFERENCES

MAP NO. 1654
CONSTRUCTION PLAN APPROVAL 2470552

APNS

438-571-02, 13, 14-00

LEGEND



PARCEL A
INDICATES IRREVOCABLE OFFER TO DEDICATE
RILEY STREET
AREA = 295.0 SQUARE FEET (0.007 ACRES)



PARCEL B
INDICATES IRREVOCABLE OFFER TO DEDICATE
GAINES STREET
AREA = 590.0 SQUARE FEET (0.014 ACRES)

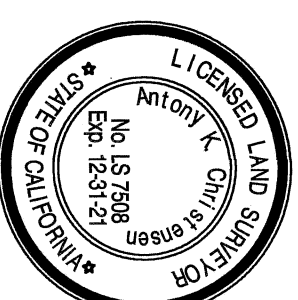
————— INDICATES RIGHT OF WAY LINE

- - - - - INDICATES EASEMENT LINE

— · — · — INDICATES CENTERLINE

- - - - - INDICATES LOT LINE

() INDICATES RECORD DATA PER MAP NO. 1654



A2018-22

CHRISTENSEN ENGINEERING & SURVEYING

7888 SILVERTON AVENUE, SUITE J
SAN DIEGO, CA 92126
(858) 271-9901

Anthony K. Christensen

05-20-21

ANTONY K. CHRISTENSEN
L.S. 7508, EXPIRES 12-31-21

DATE

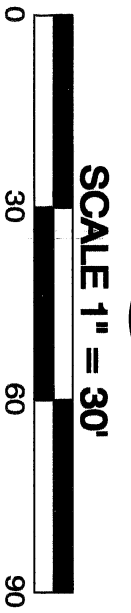
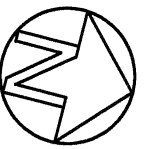
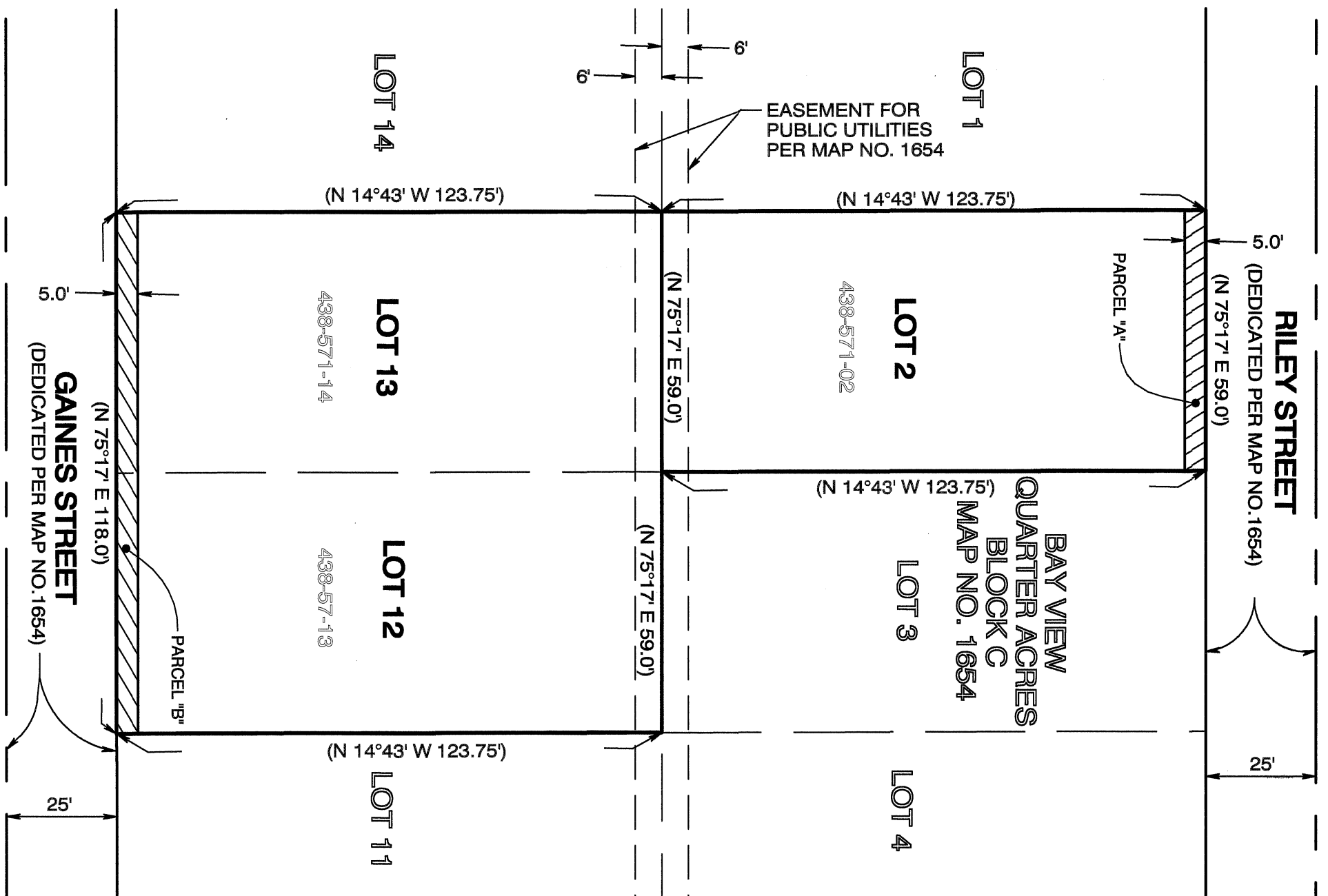
DOCUMENT NO. 2021-0390336 & Doc # 2021-0390386
DATE RECORDED MAY 24, 2021

IRREVOCABLE OFFER TO DEDICATE - STREET PURPOSES IN PORTIONS OF LOTS 2, 12 & 13 IN BLOCK C OF MAP NO. 1654

DESCRIPTION	BY	APPROVED	DATE	FILMED	CITY OF SAN DIEGO, CALIFORNIA	P.T.S.
ORIGINAL	CE&S	S.G.	5/4/2021		SHEET 1 OF 2 SHEETS	681022
						IO NO. N/A
					FOR CITY ENGINEER	1858-6269
					DATE	CCS 83 COORDINATES
						218-1709
						LAMBERT COORDINATES
						42214-1-B

ACQUIRED

EXHIBIT "B"



A2018-22

IRREVOCABLE OFFER TO DEDICATE - STREET PURPOSES IN PORTIONS OF LOTS 2, 12 & 13 IN BLOCK C OF MAP NO. 1654

DESCRIPTION	BY	APPROVED	DATE	FILMED	CITY OF SAN DIEGO, CALIFORNIA	P.T.S.
ORIGINAL	CE&S	S.O.	6/14/2021		SHEET 2 OF 2 SHEETS	681022
					FOR CITY ENGINEER	IO NO. N/A
					<i>Kimberly A. King</i> DATE 5/20/2021	1858-6269
						CCS 83 COORDINATES
						218-1709
						LAMBERT COORDINATES
						42214-2-B

ACQUIRED