


REFERENCE DRAWINGS

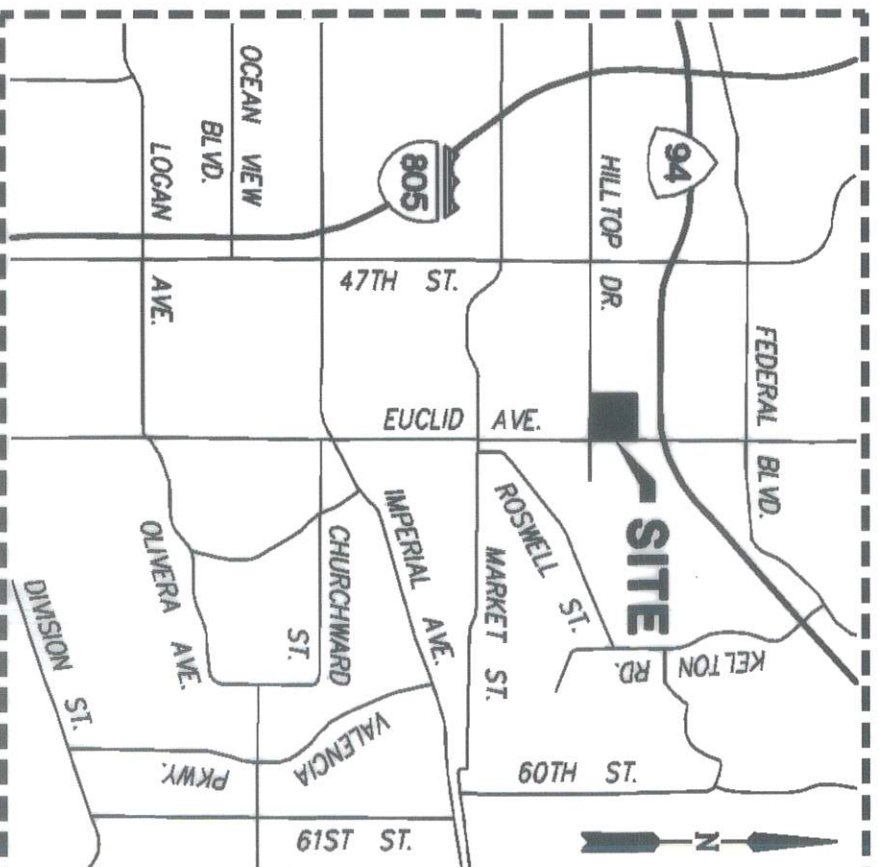
- MAP 283
- MAP 3842
- MAP 16417
- ROS 1779
- VTM 1976638
- DWG. 41780-B

ASSESSOR'S PARCEL NO.'S

• 542-480-22 • 542-480-24

LEGEND

-  INDICATES DRAINAGE EASEMENT ACQUIRED (AREA = 1051 SQ. FT.)
- INDICATES FOUND MONUMENT AS NOTED
- P.O.C. INDICATES POINT OF COMMENCEMENT
- P.O.B. INDICATES POINT OF BEGINNING
- P.O.T. INDICATES POINT OF TERMINUS
- () INDICATES MEASURED AND RECORD DATA PER MAP NO. 16417



VICINITY MAP

NOT TO SCALE

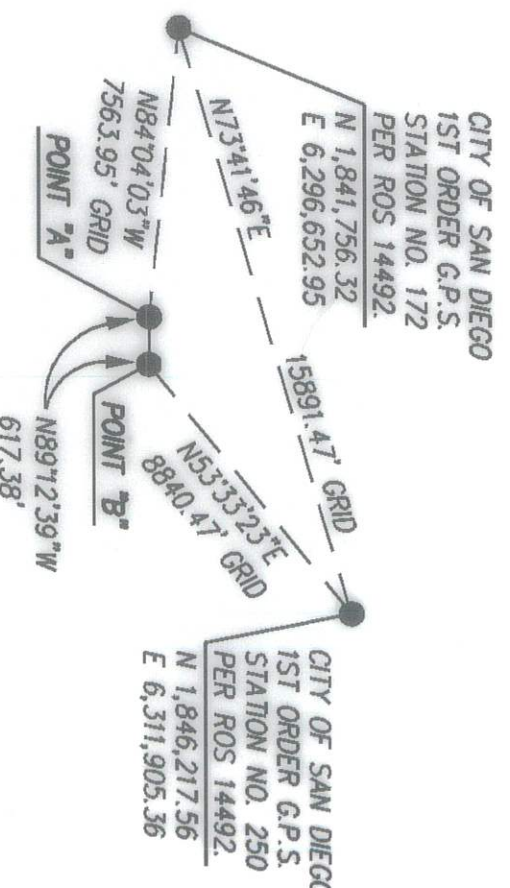
EXISTING NON-PLOTTABLE EASEMENTS

- PIPELINE EASEMENT GRANTED TO SOUTHERN CALIFORNIA MOUNTAIN WATER COMPANY PER DOCUMENT RECORDED MARCH 12, 1912 IN BOOK 553, PAGE 23 OF DEEDS.
- COMMUNICATIONS EASEMENT GRANTED TO COX COMMUNICATIONS CALIFORNIA, LLC, PER DOCUMENT RECORDED FEBRUARY 12, 2021 AS DOCUMENT NO. 2021-0114943, O.R.
- UTILITY EASEMENT GRANTED TO SAN DIEGO GAS & ELECTRIC COMPANY PER DOCUMENT RECORDED JUNE 22, 2021 AS DOCUMENT NO. 2021-0452831, O.R.

BASIS OF BEARINGS

THE BASIS OF BEARINGS FOR THIS SURVEY IS THE CALIFORNIA COORDINATE SYSTEM OF 1983, ZONE 6, EPOCH 1991.35 AND IS DETERMINED BY G.P.S. MEASUREMENTS TAKEN IN JULY 2016 AT POINT 'A' AND 'B' SHOWN HEREON. SAID POINTS WERE ESTABLISHED FROM FIRST ORDER G.P.S. STATION NO. 172 AND FIRST ORDER G.P.S. STATION NO. 250 PER RECORD OF SURVEY NO. 14492.

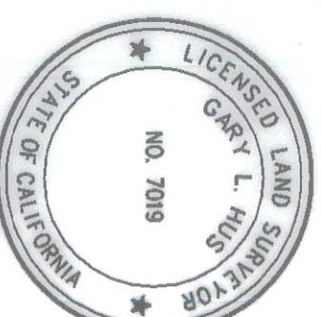
BEARING FROM POINT 'B' TO 'A' IS: NORTH 89°12'39" WEST
 DISTANCES SHOWN HEREON ARE GROUND LEVEL DISTANCES.
 THE COMBINED SCALE FACTOR AT POINT 'A' IS 1.000009451.
 GRID DISTANCE = GROUND DISTANCE X COMBINED SCALE FACTOR. ELEVATION AT POINT 'A' IS 168.32' (N.G.V.D. 29)
 QUOTED BEARINGS FROM REFERENCE DEEDS/MAPS MAY OR MAY NOT BE IN TERMS OF SAID SYSTEM.



BASIS OF BEARINGS

DETAIL

NOT TO SCALE



Gary L. Hus
 GARY L. HUS, L.S. 7019 DATE 10-13-2021



PROJECT DESIGN CONSULTANTS
 Planning | Landscape Architecture | Engineering | Survey
 701 B Street, Suite 800 San Diego, CA 92101
 619.235.6471 Tel 619.234.0349 Fax

DOCUMENT NO. 2021-0748326
 RECORDED 10/27/2021

DRAINAGE EASEMENT

WITHIN A PORTION OF LOTS 'A' AND 1 OF HILLTOP AND EUCLID, MAP NO. 16417

DESCRIPTION	BY	APPRVD.	DATE	FILMED
ORIGINAL	PDC			11-2-21

ACQUIRED

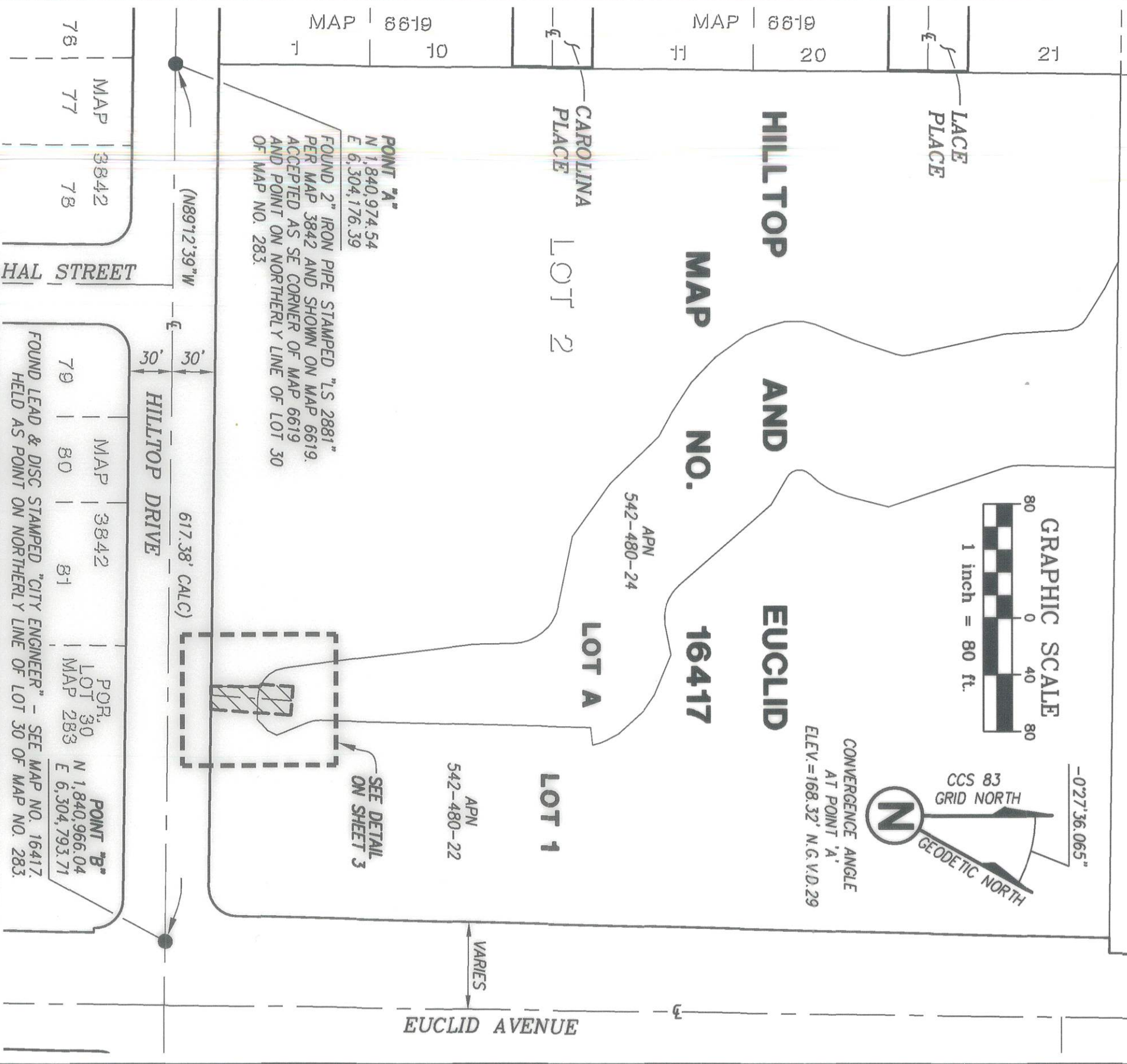
STATUS

CITY OF SAN DIEGO, CALIFORNIA
 SHEET 1 OF 3 SHEETS

Gary L. Hus
 FOR CITY ENGINEER DATE 10/13/2021

P.T.S. NO. 683521
 I.O. NO. N/A
 1840-6301
 CCS83 COORDINATES
 200-1741
 LAMBERT COORDINATES
 42258-1-B

PORTION OF LOT 29
HORTON'S PURCHASE MAP NO. 283



PROJECT DESIGN CONSULTANTS
 Planning | Landscape Architecture | Engineering | Survey
 701 B Street, Suite 800 San Diego, CA 92101
 619.236.6471 Tel 619.234.0349 Fax

DRAINAGE EASEMENT

WITHIN A PORTION OF LOTS 'A' AND 1 OF
HILLTOP AND EUCLID, MAP NO. 16417

DESCRIPTION	BY	APPRVD.	DATE	FILMED	P.T.S. NO.
ORIGINAL	PDC		11-2-21		683521
CITY OF SAN DIEGO, CALIFORNIA SHEET 2 OF 3 SHEETS FOR CITY ENGINEER <i>W.A.R. King</i> DATE <i>10/21/2021</i>					I.O. NO. N/A 1840-6301 CCS83 COORDINATES 200-1741 LAMBERT COORDINATES 42258-2-B
ACQUIRED					STATUS

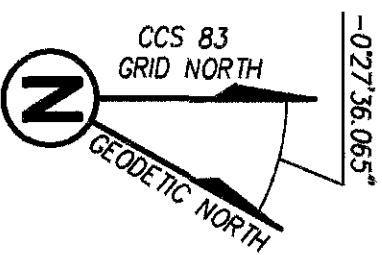
**HILLTOP
MAP**

**AND
NO.**

**EUCLID
16417**

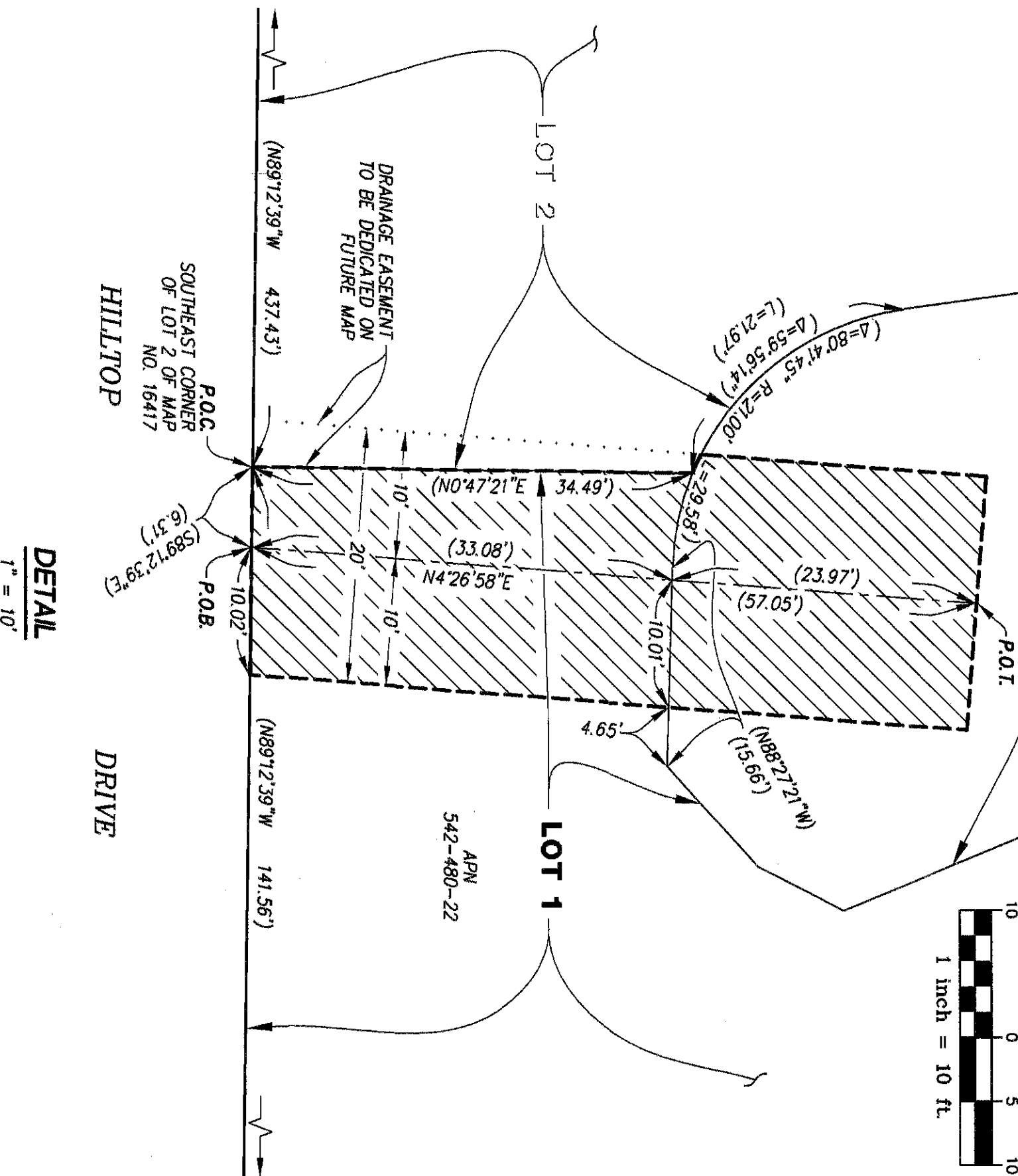
APN
542-480-24

LOT A



CONVERGENCE ANGLE
AT POINT 'A'
ELEV.=168.32' N.C.V.D.29

GRAPHIC SCALE



DETAIL
1" = 10'



PROJECT DESIGN CONSULTANTS
Planning | Landscape Architecture | Engineering | Survey
701 B Street, Suite 800 San Diego, CA 92101
619.236.6471 Tel 619.234.0349 Fax

DRAINAGE EASEMENT

WITHIN A PORTION OF LOTS 'A' AND 1 OF
HILLTOP AND EUCLID, MAP NO. 16417

DESCRIPTION	BY	APPRVD.	DATE	FILMED
ORIGINAL	PDC			11/2/21

CITY OF SAN DIEGO, CALIFORNIA

SHEET 3 OF 3 SHEETS

Valera Rg
FOR CITY ENGINEER

DATE

P.T.S. NO. 683521

I.O. NO. N/A

1840-6301

CCS83 COORDINATES

200-1741

LAMBERT COORDINATES

42258-3-B

ACQUIRED

STATUS