

**REFERENCE DRAWINGS**

- MAP 283 • ROS 1779
- MAP 3842 • VTM 19766.38
- MAP 16417 • DWG. 41780-B

**ASSESSOR'S PARCEL NO.'S**

- 542-480-22 • 542-480-24

**LEGEND**

- INDICATES PEDESTRIAN ACCESS EASEMENT ACQUIRED (AREA = 1100 SQ. FT.)
- INDICATES FOUND MONUMENT AS NOTED
- P.O.C. INDICATES POINT OF COMMENCEMENT
- P.O.B. INDICATES POINT OF BEGINNING
- P.O.T. INDICATES POINT OF TERMINUS
- ( ) INDICATES MEASURED AND RECORD DATA PER MAP NO. 16417 UNLESS OTHERWISE NOTED

**EXISTING NON-PLOTTABLE EASEMENTS**

- PIPELINE EASEMENT GRANTED TO SOUTHERN CALIFORNIA MOUNTAIN WATER COMPANY PER DOCUMENT RECORDED MARCH 12, 1912 IN BOOK 553, PAGE 23 OF DEEDS.
- COMMUNICATIONS EASEMENT GRANTED TO COX COMMUNICATIONS CALIFORNIA, LLC, PER DOCUMENT RECORDED FEBRUARY 12, 2021 AS DOCUMENT NO. 2021-0114943, O.R.
- UTILITY EASEMENT GRANTED TO SAN DIEGO GAS & ELECTRIC COMPANY PER DOCUMENT RECORDED JUNE 22, 2021 AS DOCUMENT NO. 2021-0452831, O.R.

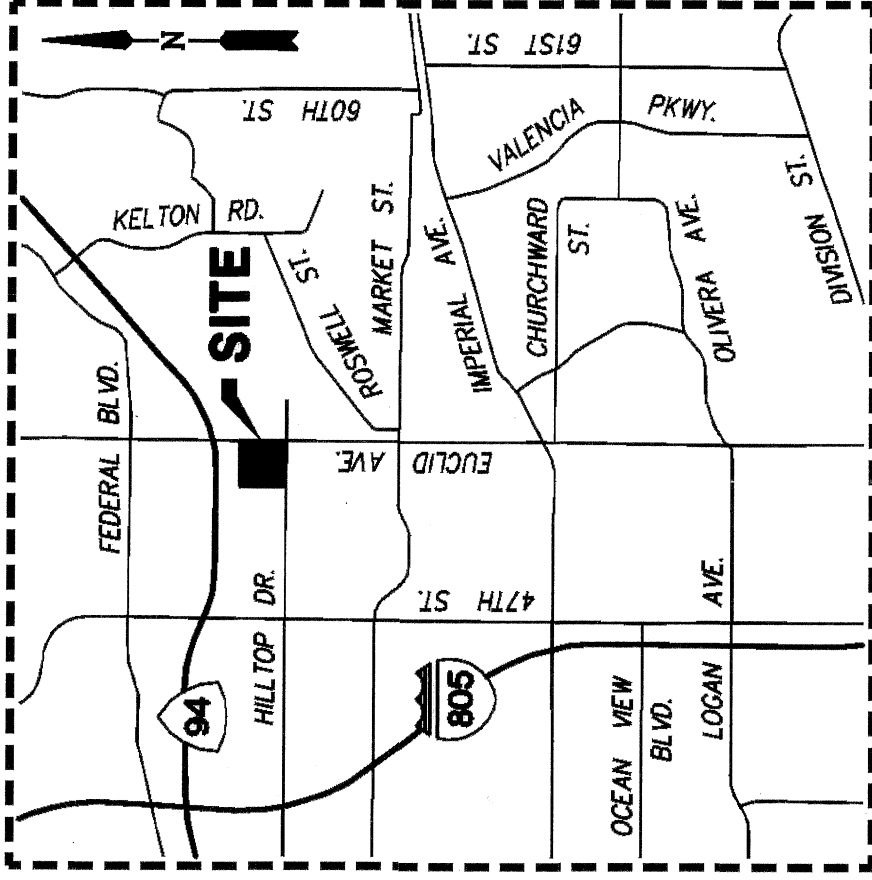
**BASIS OF BEARINGS**

THE BASIS OF BEARINGS FOR THIS SURVEY IS THE CALIFORNIA COORDINATE SYSTEM OF 1983, ZONE 6, EPOCH 1991.35 AND IS DETERMINED BY G.P.S. MEASUREMENTS TAKEN IN JULY 2016 AT POINT 'A' AND 'B' SHOWN HEREON. SAID POINTS WERE ESTABLISHED FROM FIRST ORDER G.P.S. STATION NO. 172 AND FIRST ORDER G.P.S. STATION NO. 250 PER RECORD OF SURVEY NO. 14492.

BEARING FROM POINT 'B' TO 'A' IS: SOUTH 89°12'39" EAST

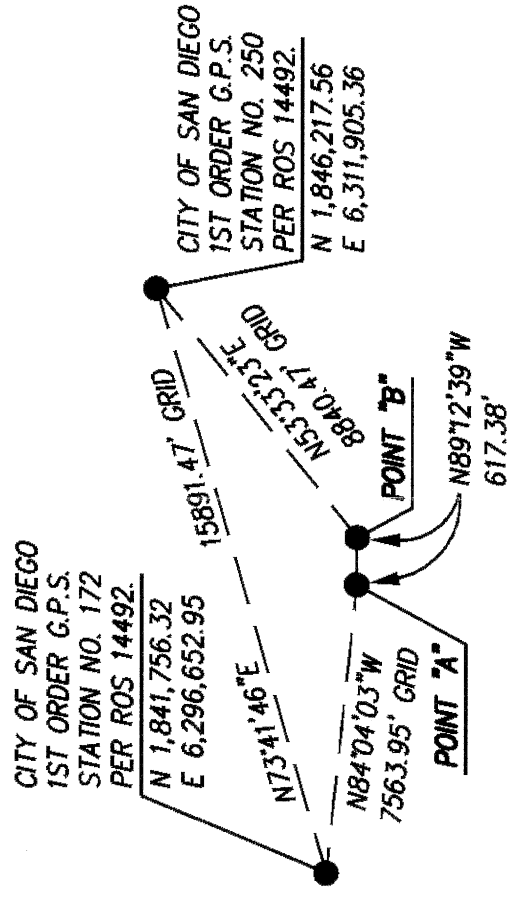
DISTANCES SHOWN HEREON ARE GROUND LEVEL DISTANCES. THE COMBINED SCALE FACTOR AT POINT 'A' IS 1.000009451. GRID DISTANCE = GROUND DISTANCE X COMBINED SCALE FACTOR. ELEVATION AT POINT 'A' IS 168.32' (N.G.V.D. 29)

QUOTED BEARINGS FROM REFERENCE DEEDS/MAPS MAY OR MAY NOT BE IN TERMS OF SAID SYSTEM.



**VICINITY MAP**

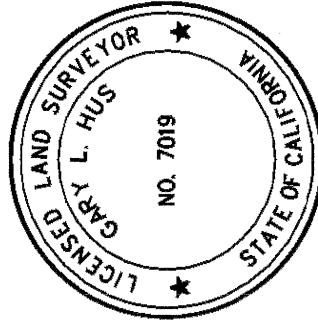
NOT TO SCALE



**BASIS OF BEARINGS**

**DETAIL**

NOT TO SCALE



*Gary L. Hus*

GARY L. HUS, L.S. 7019

DATE 10-13-2021



**PROJECT DESIGN CONSULTANTS**  
 Planning | Landscape Architecture | Engineering | Survey  
 701 B Street, Suite 800 San Diego, CA 92101  
 619.235.6471 Tel 619.234.0349 Fax

DOCUMENT NO. 2021-0765494

RECORDED NOVEMBER 3, 2021

**PEDESTRIAN ACCESS EASEMENT**

WITHIN A PORTION OF LOTS 'A' AND 1 OF HILLTOP AND EUCLID, MAP NO. 16417

DESCRIPTION	BY	APPRVD.	DATE	FILMED
ORIGINAL	PDC		10/15/21	

STATUS	

CITY OF SAN DIEGO, CALIFORNIA  
 SHEET 1 OF 3 SHEETS

*Gary L. Hus*  
 FOR CITY ENGINEER  
 LAND SURVEYOR

DATE

P.T.S. NO. 683523  
 I.O. NO. N/A

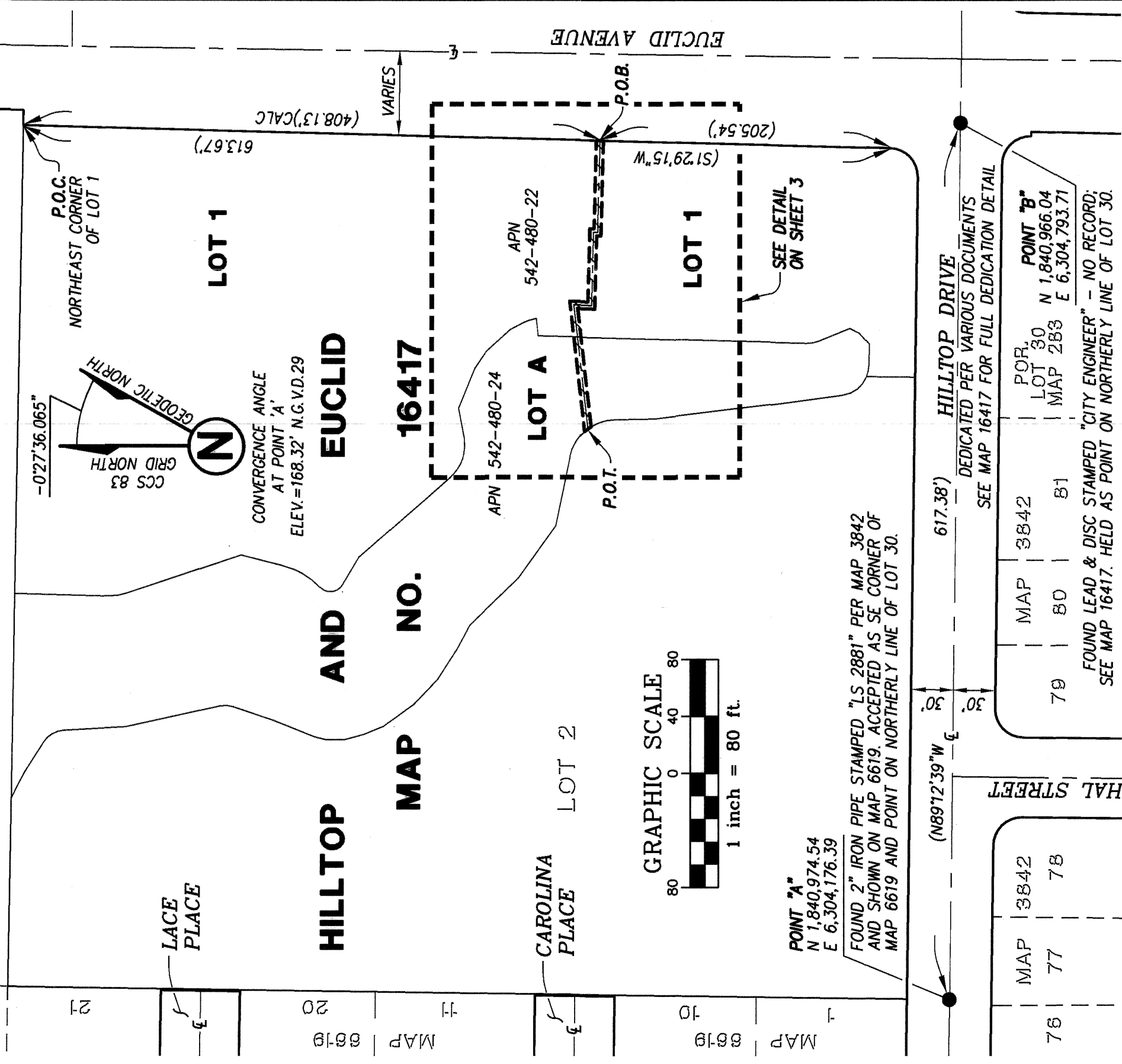
1840-6301

CCS83 COORDINATES  
 200-1741

LAMBERT COORDINATES

42259-B

PORTION OF LOT 29  
HORTON'S PURCHASE MAP NO. 283



MAP 76	77	3842	78
MAP 79	80	81	81

MAP 3842	3842
MAP 80	81

FOR LOT 30  
MAP 283  
POINT "B"  
N 1,840,966.04  
E 6,304,793.71

**PROJECT DESIGN CONSULTANTS**  
Planning | Landscape Architecture | Engineering | Survey  
701 B Street, Suite 800 San Diego, CA 92101  
619.236.6471 Tel 619.234.0349 Fax

**PEDESTRIAN ACCESS EASEMENT**  
WITHIN A PORTION OF LOTS 'A' AND 1 OF  
HILLTOP AND EUCLID, MAP NO. 16417

DESCRIPTION	BY	APPRVD.	DATE	FILMED
ORIGINAL	PDC			
		LED	10/15/21	

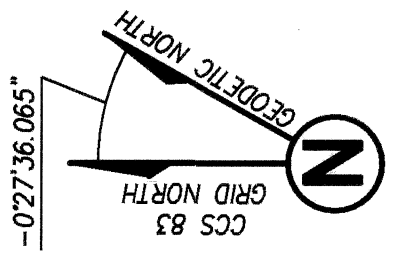
**CITY OF SAN DIEGO, CALIFORNIA**  
SHEET 2 OF 3 SHEETS

*Y. J. R. 1/3*  
FOR CITY ENGINEER  
LAND SURVEYOR

DATE

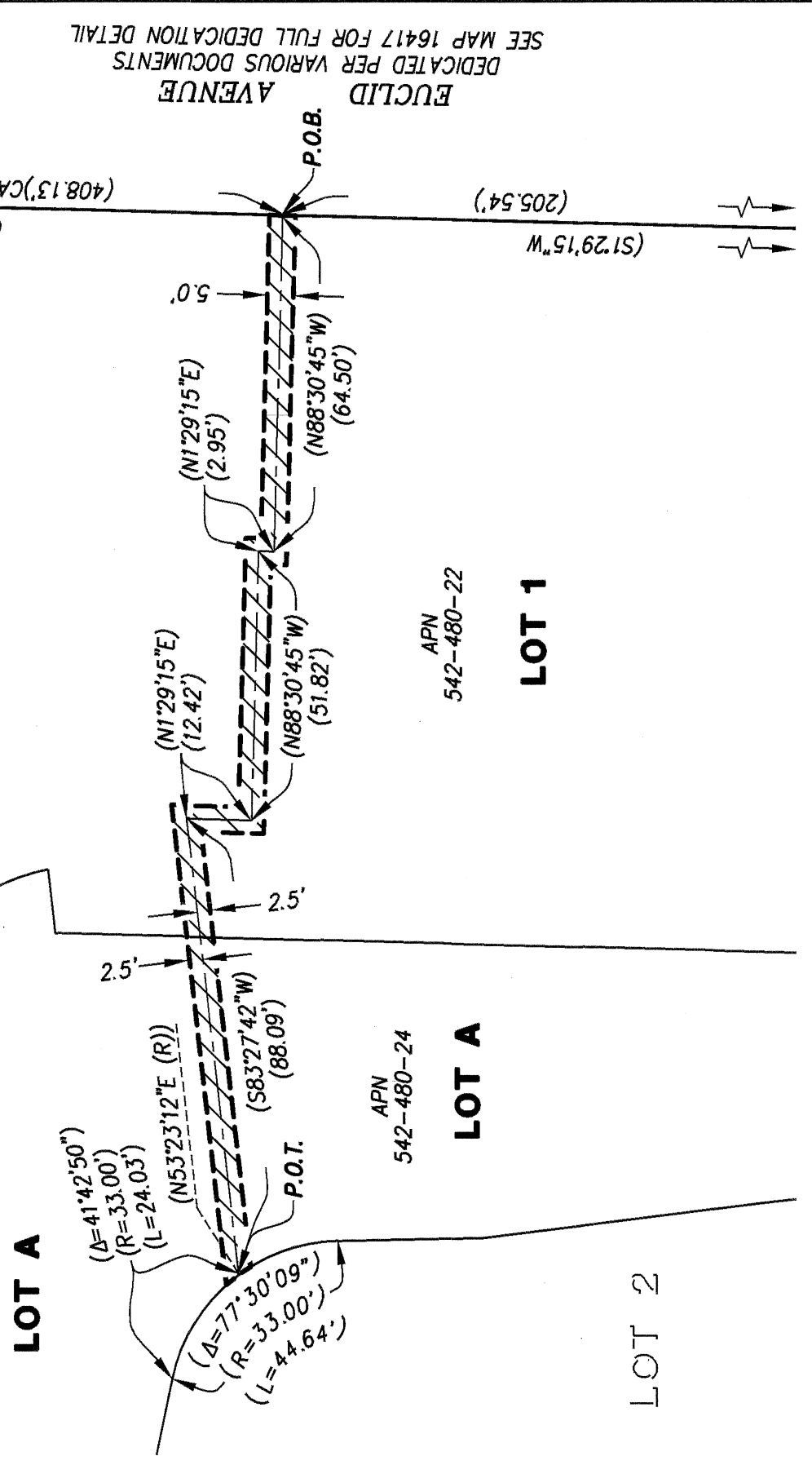
P.T.S. NO.	683523
I.O. NO.	N/A
CCS83 COORDINATES	1840-6301
LAMBERT COORDINATES	200-1741
	42259-B

STATUS	
--------	--



CONVERGENCE ANGLE  
AT POINT 'A'  
ELEV. = 168.32' N.G. V.D. 29

**LOT 1**  
**HILLTOP AND EUCLID**  
**MAP NO. 16417**



EUCLID AVENUE  
DEDICATED PER VARIOUS DOCUMENTS  
SEE MAP 16417 FOR FULL DEDICATION DETAIL

**DETAIL**  
1" = 30'

**PROJECT DESIGN CONSULTANTS**  
Planning | Landscape Architecture | Engineering | Survey  
701 B Street, Suite 800 San Diego, CA 92101  
619.235.6471 Tel 619.234.0349 Fax

**PEDESTRIAN ACCESS EASEMENT**  
WITHIN A PORTION OF LOTS 'A' AND 1 OF  
HILLTOP AND EUCLID, MAP NO. 16417

DESCRIPTION	BY	APPRVD.	DATE	FILMED
ORIGINAL	PDC			
	CEO		10/15/24	

CITY OF SAN DIEGO, CALIFORNIA	P.T.S. NO. 683523
SHEET 3 OF 3 SHEETS	I.O. NO. N/A
<i>Richard R. R. R.</i> FOR CITY ENGINEER LAND SURVEYOR	1840-6301
	CCS83 COORDINATES
	200-1741
	LAMBERT COORDINATES
	42259-B

STATUS