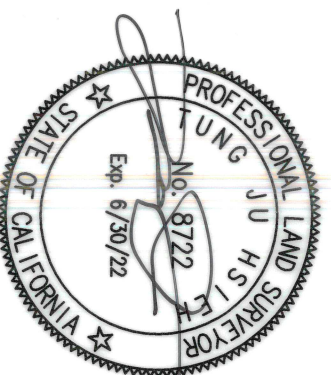


**LEGEND:**

- 1 POTION OF 44TH STREET ACCEPTED FOR PUBLIC STREET PER RESOLUTION NO. 258412 ADOPTED MAY 9, 1983 AND RECORDED MAY 25, 1983 AS DOC. NO. 174313 IN THE OFFICE OF THE COUNTY OF SAN DIEGO RECORDER, O.R.
- 2 PORTION OF 44TH STREET DEDICATED PER MAP 15154.
- 3 PORTION OF 44TH STREET DEDICATED PER DEED RECORDED JANUARY 6, 1964 AS F/P NO. 2181, SERIES 5, BOOK 1964, O.R.
- 4 INDICATES PUBLIC STREET EASEMENT - ACQUIRED AREA 400 SQ. FT., MORE OR LESS
- 5 6' EASEMENT TO SDG&E FOR POLE AND WIRES AS RECORDED MAY 9, 1933, BOOK 201, PAGE 421
- 6 4' EASEMENT TO SDG&E FOR GAS PIPELINES AS RECORDED JUNE 23, 1952, BOOK 4535, PAGE 147.
- 7 SEWER EASEMENT PER RESOLUTION NO. R-258412 RECORDED MAY 25, 1983 AS DOCUMENT NO. 83-174313.



ASSESSOR'S PARCEL NUMBER:  
REFERENCE DRAWINGS:

551-090-09  
ROS 10351, MAP 15154  
ROS 21451, ROS 18371  
MAP 27



The Altum Group  
72-140 Magnesia Falls, Suite No. 1, Rancho Mirage, CA 92270  
t. 760.346.4750 TheAltumGroup.com f. 760.340.0089

- Engineering • Planning
- Survey • Environmental

TUNG JU HSIEH DATE: 07/01/21  
P.L.S. 8722, EXP. 6/30/22

**PUBLIC STREET EASEMENT**

A PORTION OF THE SOUTH HALF OF LOT 4 OF CARUTHER'S ADDITION MAP, ACCORDING TO MAP THEREOF NO. 27, FILED IN THE OFFICE OF THE COUNTY RECORDER OF SAN DIEGO COUNTY, OCTOBER 1, 1880.

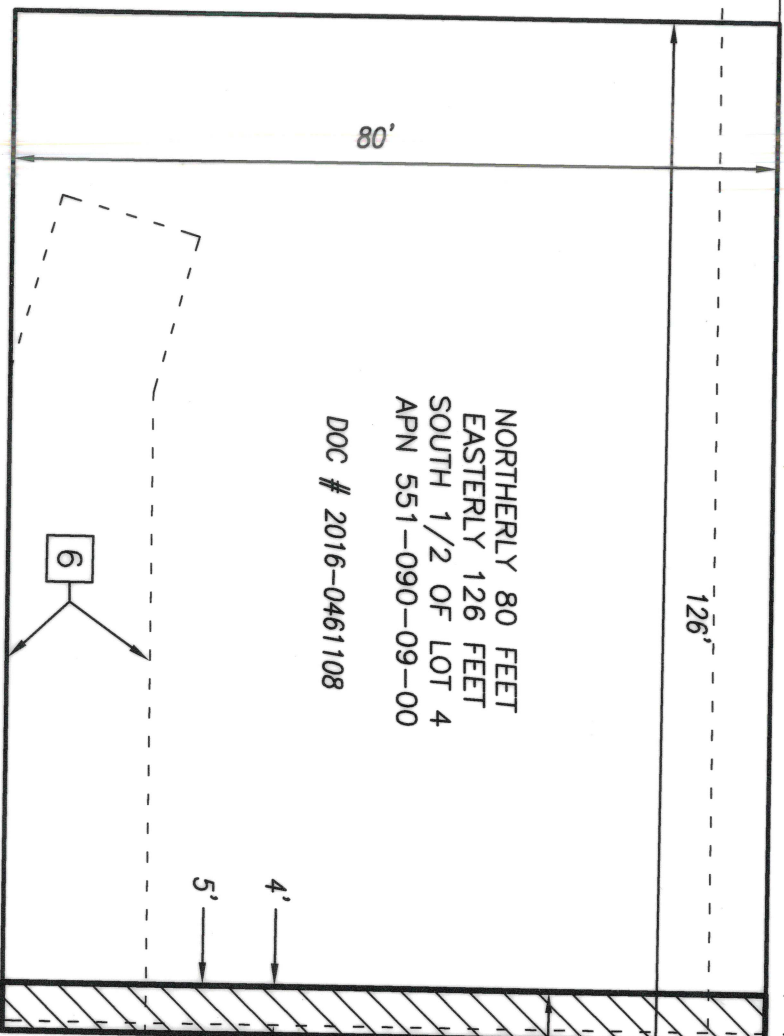
DESCRIPTION	BY	APPROVED	DATE	FILMED	CITY OF SAN DIEGO, CALIFORNIA SHEET 1 OF 2 SHEETS	P.T.S. NO.
ORIGINAL	S.O.		9/17/2021			660251
					FOR CITY ENGINEER <i>J. L. K. K. K.</i>	J.N. NO.
					DATE 9/16/2021	N/A
						1832-6297
						NAD 83 COORDINATES
						192-1737
						LAMBERT COORDINATES
						42273-1-B

ACQUIRED

STATUS

POR LOT 4, BLK 60  
MAP NO. 27

POR LOT 3, BLK 60  
MAP NO. 27



NORTHERLY 80 FEET  
EASTERLY 126 FEET  
SOUTH 1/2 OF LOT 4  
APN 551-090-09-00  
DOC # 2016-0461108

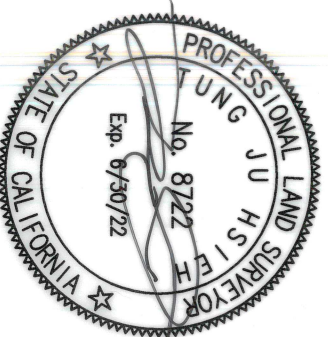
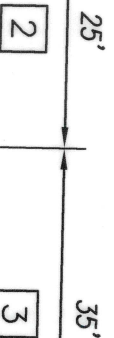
44TH STREET

MAP 10937

SOUTH 1/2 OF LOT 4  
BLK 60 MAP 27

MAP NO. 15154

SOUTH LINE OF LOT 4  
MAP NO. 1899



The Altum Group  
72-140 Magnesia Falls, Suite No. 1, Rancho Mirage, CA 92270  
t. 760.346.4750 TheAltumGroup.com f. 760.340.0089

- Engineering • Planning
- Survey • Environmental

TUNG JU HSIEH  
P.L.S. 8722, EXP. 6/30/22 DATE: 07/01/21

**PUBLIC STREET EASEMENT**

A PORTION OF THE SOUTH HALF OF LOT 4 OF CARUTHER'S  
ADDITION MAP, ACCORDING TO MAP THEREOF NO. 27, FILED  
IN THE OFFICE OF THE COUNTY RECORDER OF SAN DIEGO  
COUNTY, OCTOBER 1, 1880.

DESCRIPTION	BY	APPROVED	DATE	FILMED
ORIGINAL	S.O.	9/7/2021		

CITY OF SAN DIEGO, CALIFORNIA  
SHEET 2 OF 2 SHEETS  
FOR CITY ENGINEER  
DATE

P.T.S. NO. 660251  
J.N. NO. N/A  
1832-6297  
NAD 83 COORDINATES  
192-1737  
LAMBERT COORDINATES

ACQUIRED

STATUS

42273-2-B