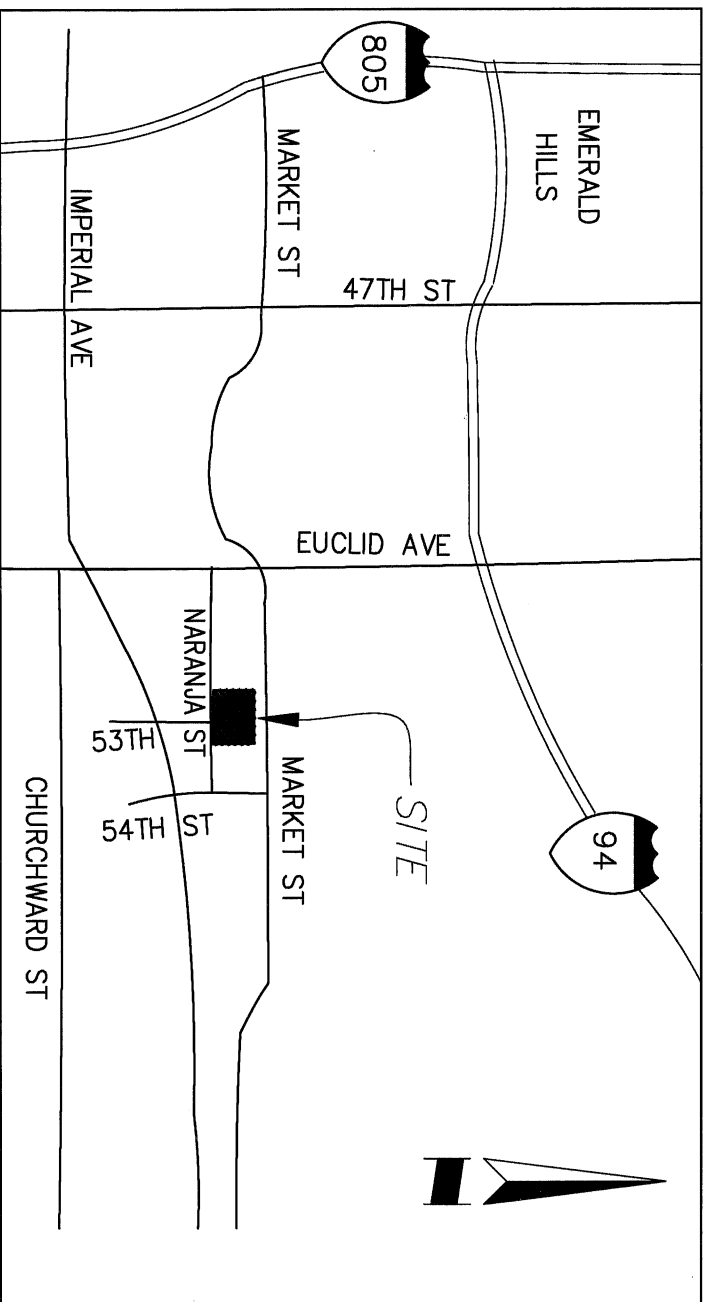


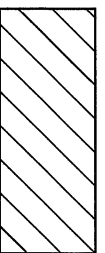
EXHIBIT "B"



VICINITY MAP

NOT TO SCALE

LEGEND



EXISTING SEWER EASEMENTS VACATED
AREA = 2,520.62 SQ. FT. (0.058 ACRE)



INDICATES RIGHT OF WAY



INDICATES LOT LINE



INDICATES CENTERLINE



INDICATES PROPERTY LINE



INDICATES ABUTTER'S RIGHTS
RELINQUISHED PER DOCUMENT NO.
83-399642 AND 83-399643,
RECORDED NOVEMBER 3, 1983.

(N00°11'00"E 268.00') INDICATES RECORD DATA PER MAP
1988

REFERENCES

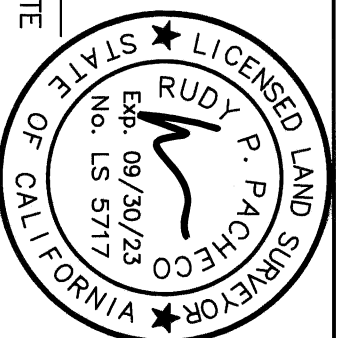
MAP No. 1988
CITY OF SAN DIEGO DRAWING 40682-B, 40386-D
APN 548-051-12 & 13

BASIS OF BEARINGS

THE BASIS OF BEARINGS FOR THIS MAP IS THE CALIFORNIA COORDINATE SYSTEM CCS83 ZONE 6, NAD83 DATUM, EPOCH 1991.35, IS DETERMINED BY GPS MEASUREMENTS TAKEN ON DEC.13, 2018 AT POINTS "A" AND "B". POINTS "A" AND "B" WERE ESTABLISHED FROM GPS STATION "176" AND "178" PER RECORD OF SURVEY 14492.
"178" PER RECORD OF SURVEY 14492.
THE BEARING FROM POINT "A" TO POINT "B" IS N88°45'53"E

ACQUILINE SURVEY INC.
1919 GRAND AVE #1G
SAN DIEGO, CA 92109
(858) 483-6665

SEN. 30, 2021
RUDY P. PACHECO, P.L.S. 5717 DATE

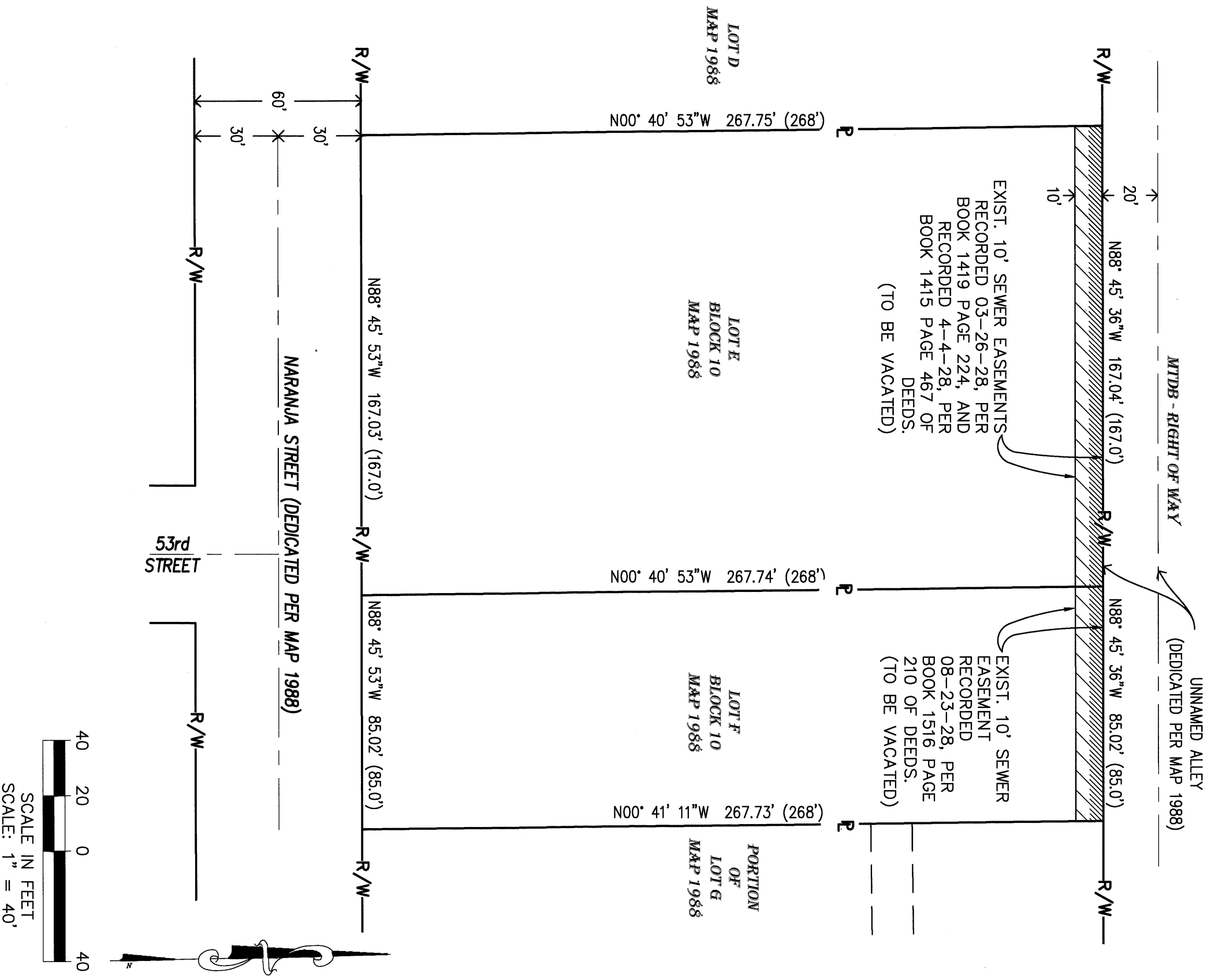


RESOLUTION No. CM-1081
ADOPTED December 29, 2021
DOCUMENT No. 2022-0031732
RECORDED JAN 21, 2022

SEWER EASEMENT VACATION
IN LOT E & F, BLOCK 10 OF LAS ALTURAS NO. 3
MAP NO. 1988

DESCRIPTION	BY	APPROVED	DATE	FILMED	CITY OF SAN DIEGO, CALIFORNIA	I.O. NO.	N/A
ORIGINAL	AS	S.D.	1/21/2022		SHEET 1 OF 2 SHEET	P.T.S. NO.	682011
						1838-6303	CCS 83 COORDINATES
					FOR CITY ENGINEER <u>TALLER, R. #13</u>	198-1743	NAD 27 COORDINATES
					DATE <u>1/19/2022</u>	42316-1-B	
COMPLETED					STATUS		

EXHIBIT "B"



SEWER EASEMENT VACATION
 IN LOT E & F, BLOCK 10 OF LAS ALTURAS NO. 3
 MAP NO. 1988

DESCRIPTION	BY	APPROVED	DATE	FILMED	CITY OF SAN DIEGO, CALIFORNIA	I.O. NO.	N/A
ORIGINAL	AS	S.D.	1/21/2022		SHEET 2 OF 2 SHEET	P.T.S. NO. 682011	
					FOR CITY ENGINEER	1838-6303	
					DATE	CCS 83 COORDINATES	
						198-1743	
						NAD 27 COORDINATES	
COMPLETED						42316-2-B	