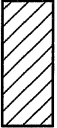






**LEGEND**

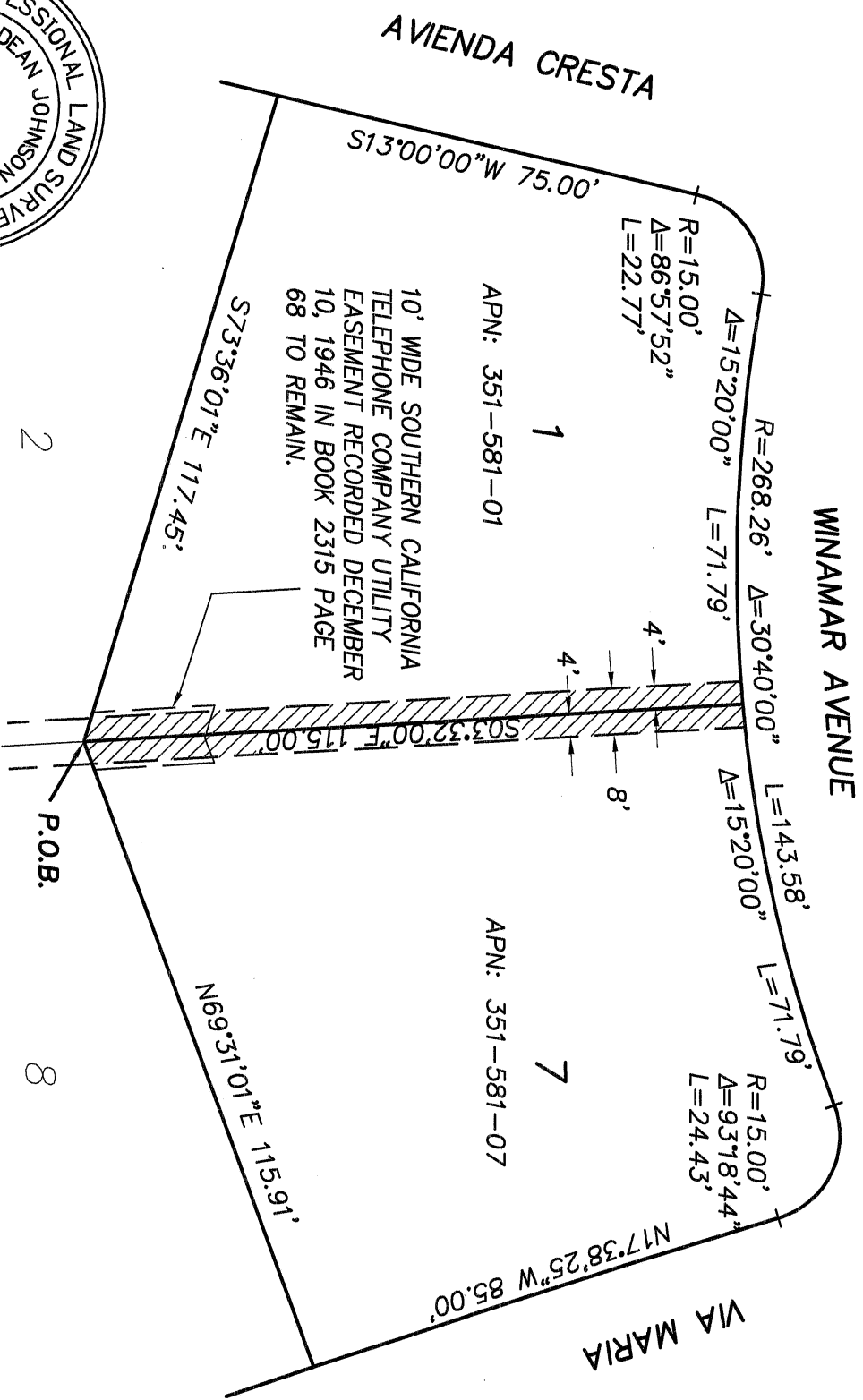
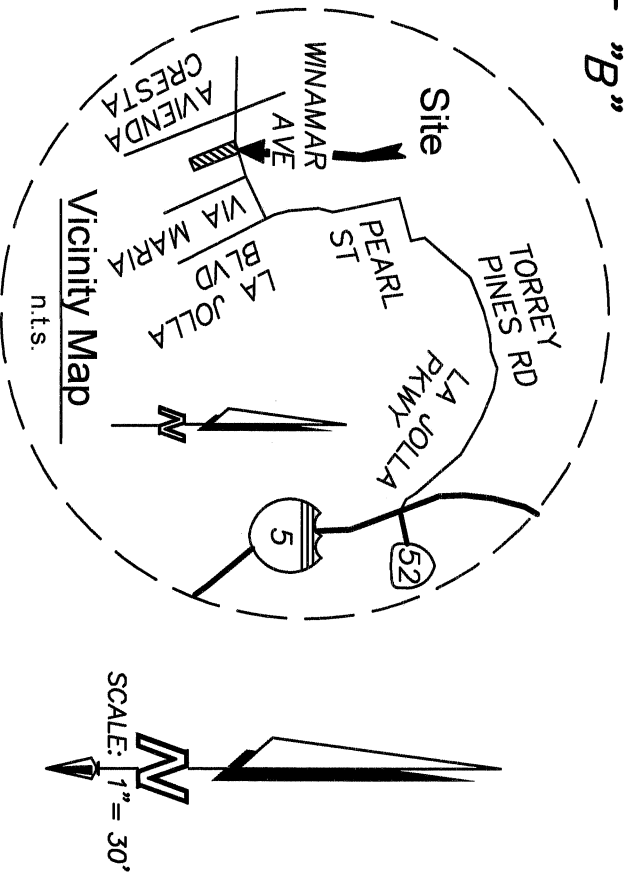
-  INDICATES PORTION OF 8' WIDE PUBLIC UTILITY EASEMENT IN BLOCK 5, MAP NO. 2353 VACATED AREA=915 SQ.FT.(0.021 ACRE).
-  INDICATES PROPERTY LINE
-  INDICATES POINT OF CURVATURE IN PROPERTY LINE
-  INDICATES EASEMENT LIMITS
-  P.O.B. INDICATES POINT OF BEGINNING

**REFERENCE DWGS.**

MAP NO. 2353

**NOTES.**

- 1) ALL DATA SHOWN IS RECORD PER MAP NO. 2353.
- 2) ALL STREETS SHOWN HEREON DEDICATED PER MAP NO. 2353.



**BLOCK 5, MAP NO. 2353**

BASIS OF BEARINGS:  
THE BASIS OF BEARINGS FOR THIS SURVEY IS THE COMMON PROPERTY LINE OF LOTS 1 AND 7 BLOCK 5, MAP NO. 2353. BEARING: S 3°32'00\"/>

LANDMARK CONSULTING  
9555 GENESEE AVENUE, SUITE 200  
SAN DIEGO, CA 92121  
(858) 887-8070  
DATE: 6/24/21  
DEAN JOHNSON PLS 4878

RESOLUTION NO.: CM-7011  
DATE ADOPTED: JAN 06, 2021  
DOCUMENT NO.: 2021-05269110  
RECORDED: JUL 23, 2021

**PUBLIC UTILITY EASEMENT VACATION**

8' WIDE UTILITY EASEMENT ALONG COMMON LINE BETWEEN LOTS 1 AND 7  
BLOCK 5 OF MAP NO. 2353

DESCRIPTION	BY	APPROVED DATE	FILMED	CITY OF SAN DIEGO, CALIFORNIA	SHEET 1 OF 1 SHEET	I.O. N/A
ORIGINAL	L.C.	5.0. 9/5/2011				P.T.S. 684289
				WILL R. RY	7/13/2021	1880-6243
				FOR CITY ENGINEER	DATE	CCS 83 COORDINATES
						240-1683
						LAMBERT COORDINATES
						42357-B

COMPLETED

STATUS