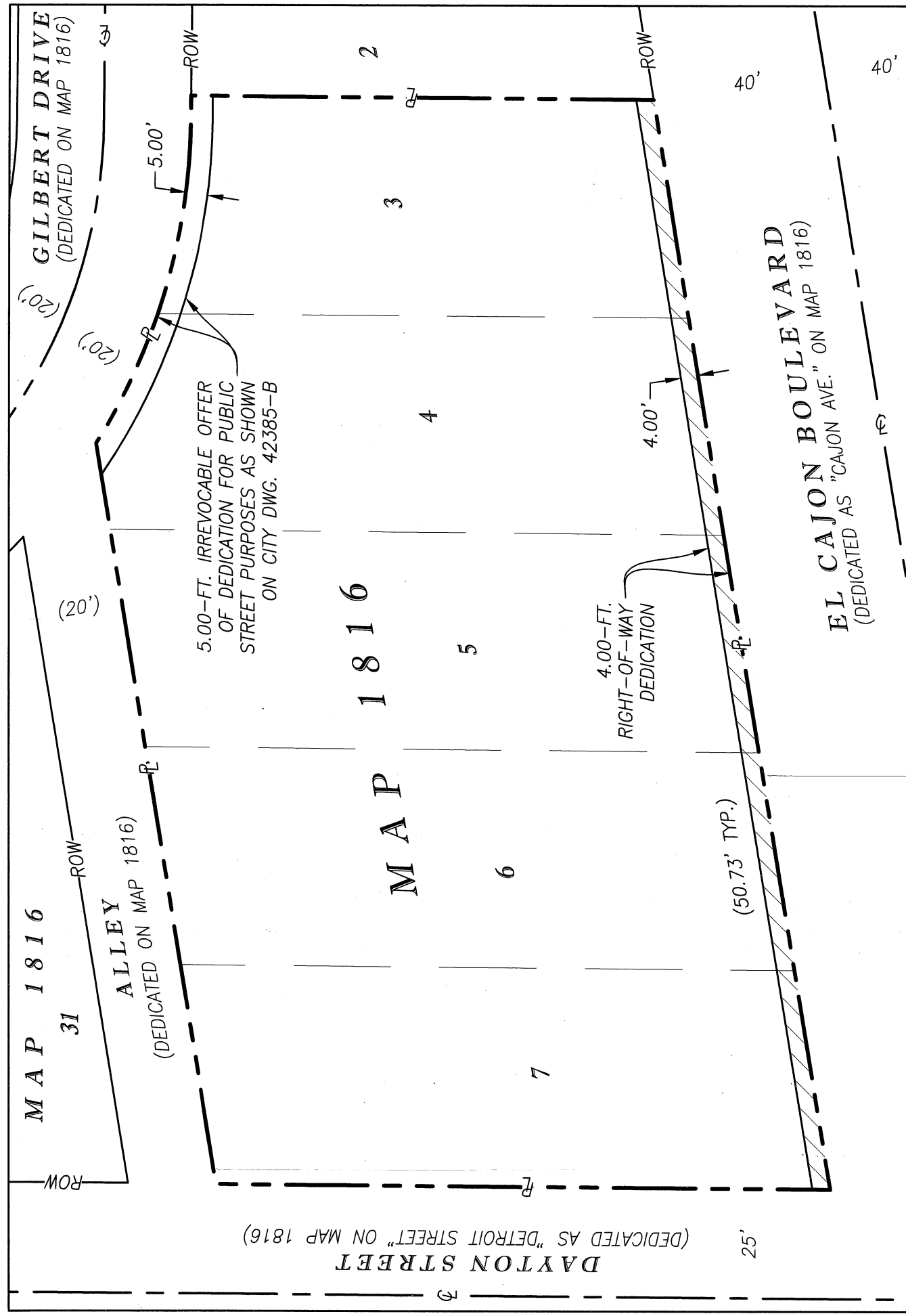


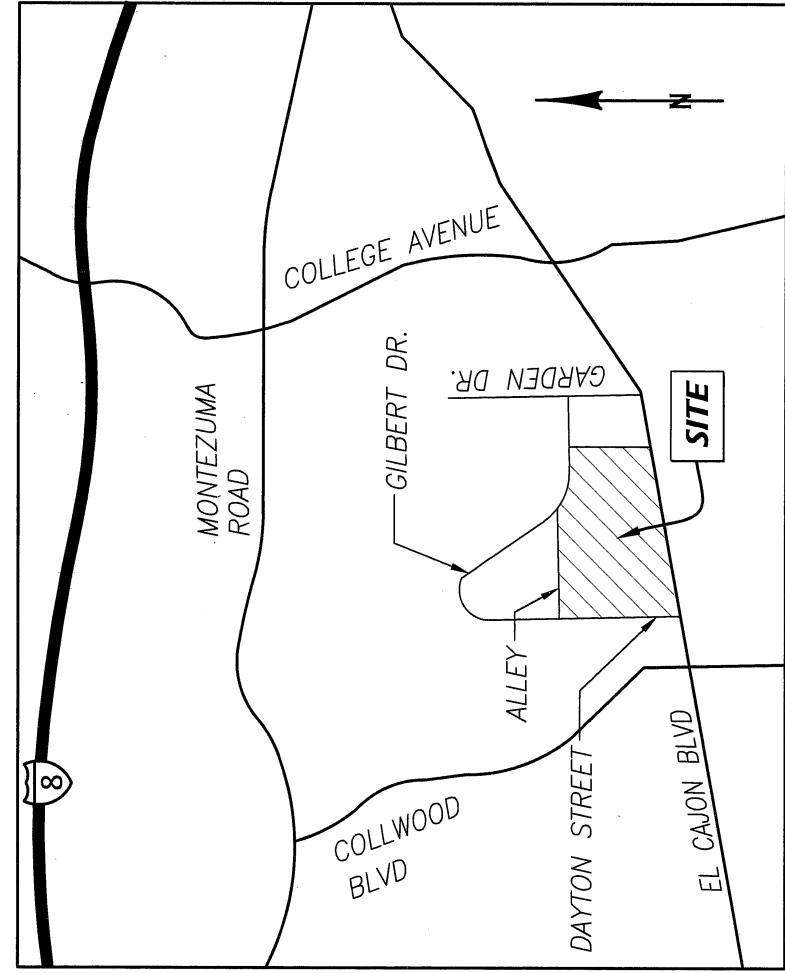
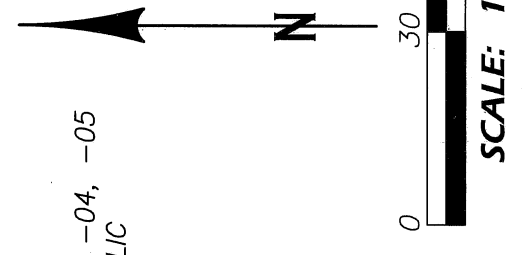
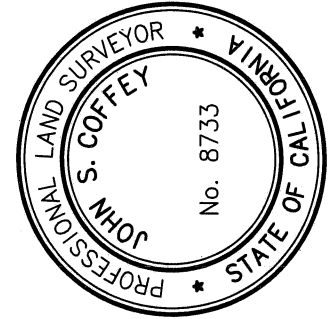
EXHIBIT 'B'



LEGEND

- INDICATES PUBLIC STREET EASEMENT ACQUIRED AREA= 1,014 SF (0.023 AC.)
- PROPERTY LINE
- CENTERLINE
- RIGHT-OF-WAY LINE
- () RECORD DATA PER MAP NO. 1816

REFERENCE DRAWINGS:
 MAP 1816
 APNs 466-692-02-00, -03, -04, -05
 SEE DWG. 42398-D FOR PUBLIC IMPROVEMENTS



DOCUMENT NO. **2021-074 B3 B6**

RECORDED **OCTOBER 11, 2021**

JOHN S. COFFEY LS 8733
 COFFEY ENGINEERING, INC.
 9666 BUSINESSPARK AVENUE, SUITE 210
 SAN DIEGO, CA 92131

RIGHT-OF-WAY DEDICATION

ALL THAT PORTION OF LOTS 3, 4, 5, 6, AND 7 OF HIGHLAND GARDEN PER MAP 1816

DESCRIPTION	BY	APPROVED DATE	FILED	P.T.S.#
ORIGINAL	CE			687944
				1856-6305
				CCS 83
				216-1745
				LAMBERT COORDINATES
				42369-B