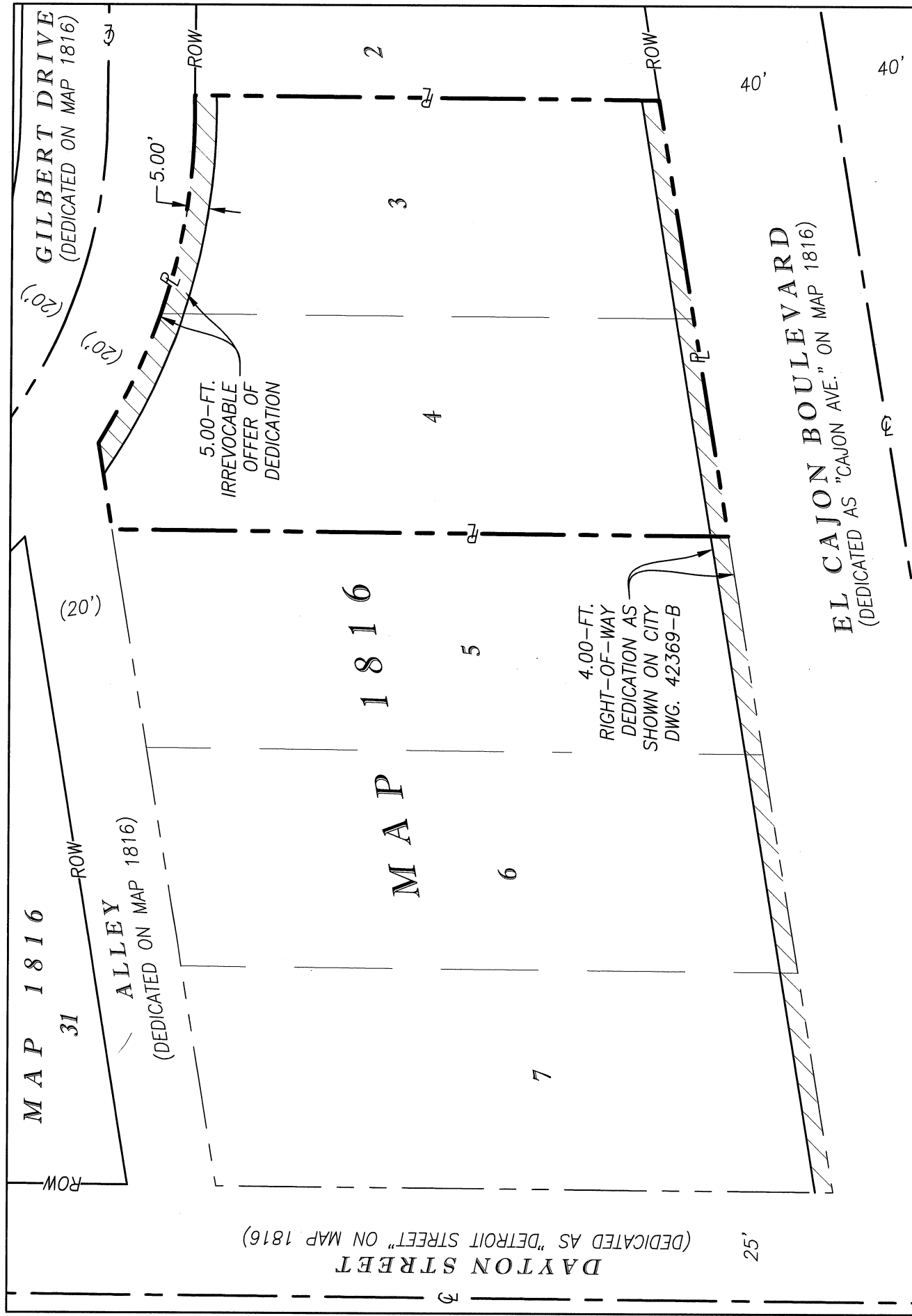


EXHIBIT 'B'

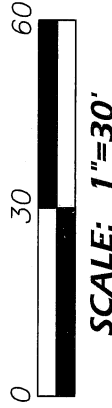
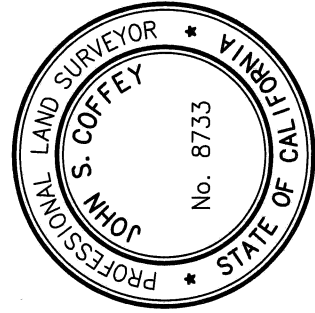


LEGEND

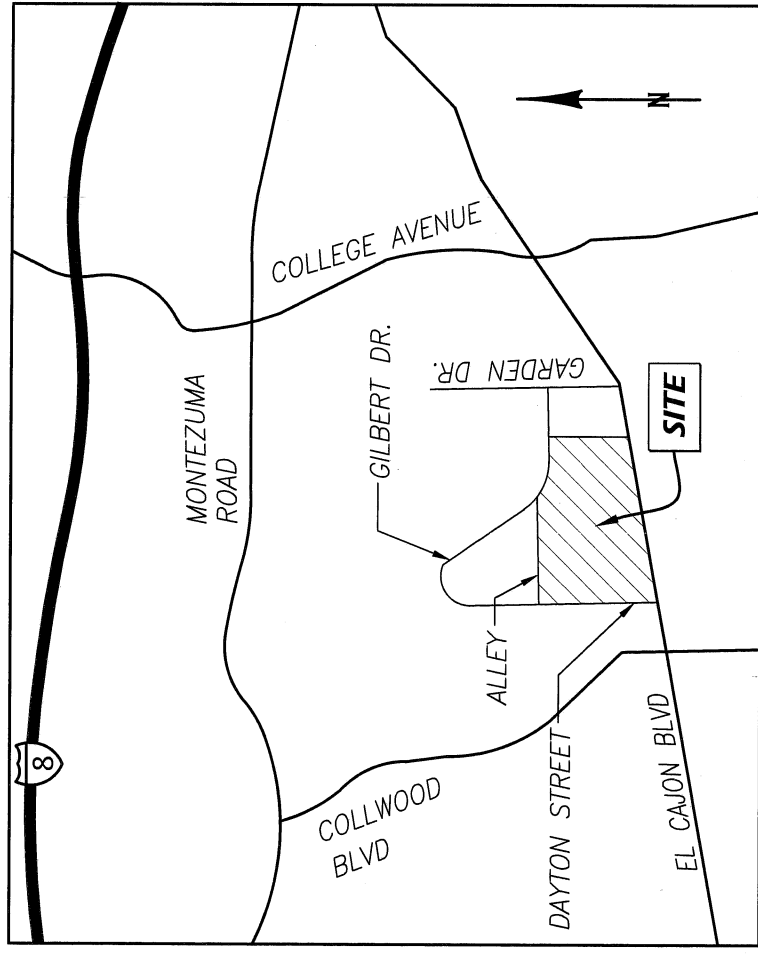
- IRREVOCABLE OFFER TO DEDICATE (I.O.D.) AREA= 440 SF (0.01 AC.)
- PROPERTY LINE
- CENTERLINE
- RIGHT-OF-WAY LINE
- () RECORD DATA PER MAP NO. 1816

REFERENCE DRAWINGS:

MAP 1816
 APNs 466-692-02-00, -03
 42398-D



SCALE: 1"=30'



DOCUMENT NO. 2021-0714 8339

RECORDED 6CTABER 17 2021

JOHN S. COFFEY LS 8733
 COFFEY ENGINEERING, INC.
 9666 BUSINESSPARK AVENUE, SUITE 210
 SAN DIEGO, CA 92131

IRREVOCABLE OFFER OF DEDICATION

ALL THAT PORTION OF LOTS 3 AND 4 OF HIGHLAND GARDEN PER MAP 1816

DESCRIPTION	BY	APPROVED DATE	FILED	CITY OF SAN DIEGO, CALIFORNIA	P.T.S.#
ORIGINAL	CE			SHEET 1 OF 1 SHEETS	689094
	SP	10/31/21		FOR CITY ENGINEER	1856-6305
				DATE	CCS 83
					216-1745
					LAMBERT COORDINATES
					42385-B

STATUS