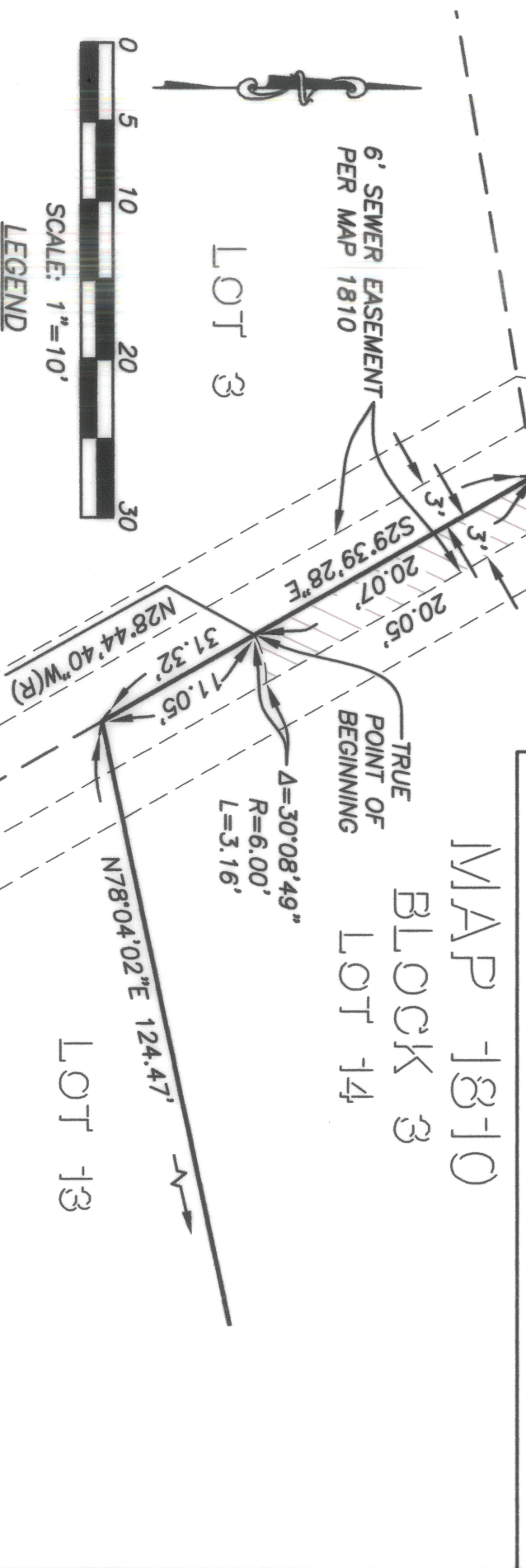
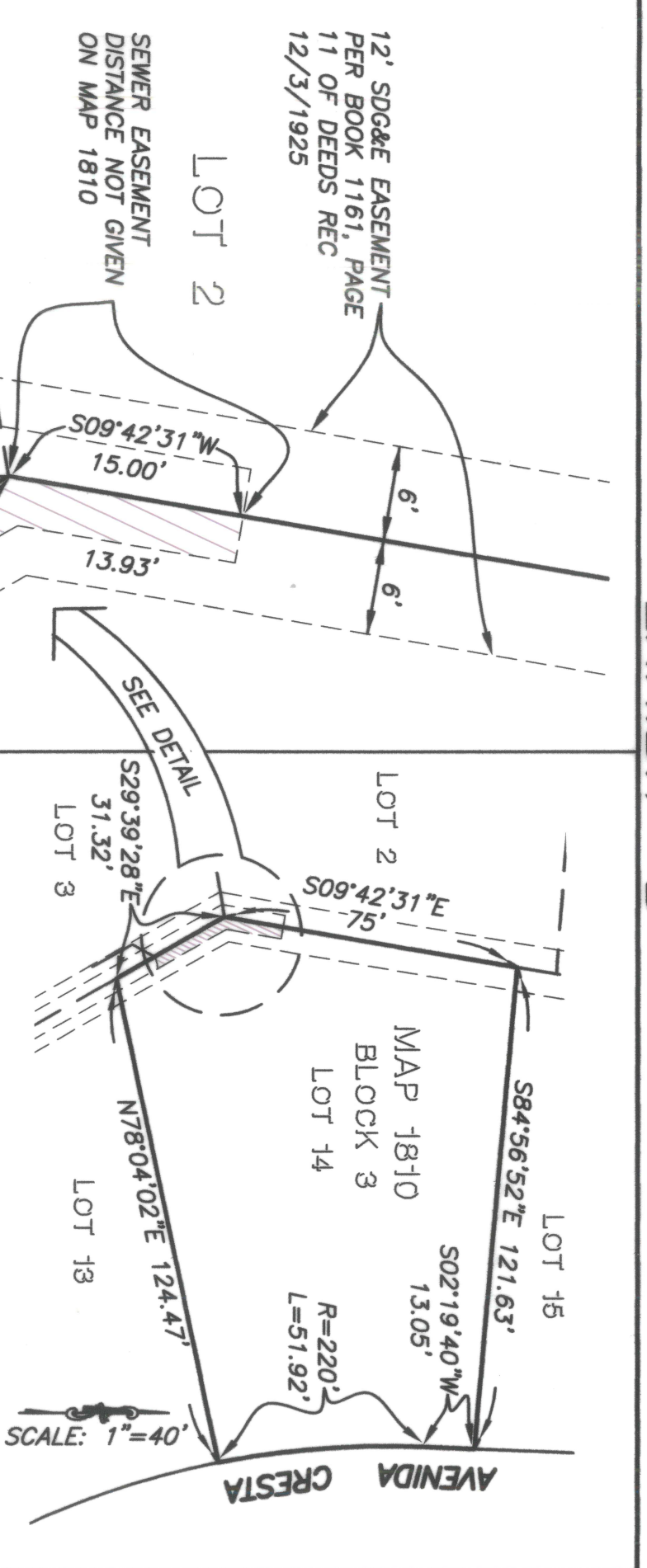
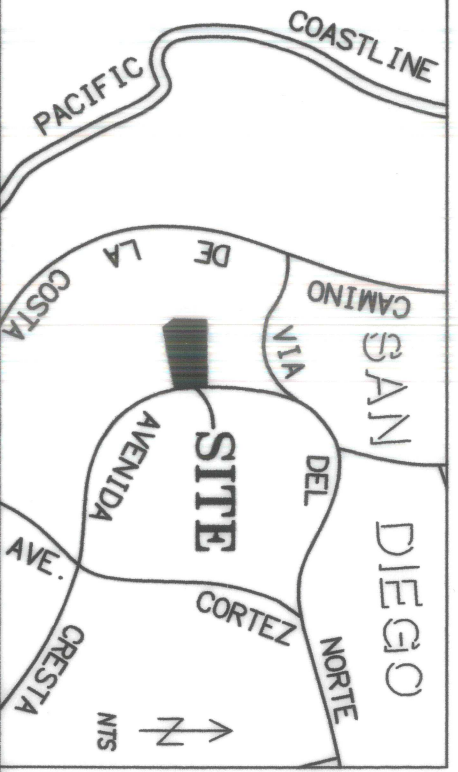


EXHIBIT "B"



- LEGEND**
- INDICATES AREA OF SEWER EASEMENT VACATION AREA = 103.44 SQ. FT./0.002 AC
 - INDICATES PROPERTY BOUNDARY
 - INDICATES LOT LINES
 - INDICATES EASEMENTS AS SHOWN



KAPPA SURVEYING & ENG.
 8402 N. MAGNOLIA AVE., SUITE C,
 SANTEE, CA 92071
 (619) 449-2600

ALLEN R.A. TURNER
 LS 7844
 10-14-2021
 DATE



ASSESSOR'S PARCEL NO.:
 357-012-13-00

REFERENCES:
 MAP NO. 1810

SDG&E EASEMENT FOR PUBLIC UTILITIES RECORDED 12/3/1925,
 IN BOOK 1161, PAGE 11 OF DEEDS, O.R.
 BASIS OF BEARINGS PER MAP NO. 1810

JOB NO. 355819 - AVENIDA CRESITA

PARTIAL SEWER EASEMENT VACATION LOT 14, BLOCK 3, LA JOLLA HERMOSA UNIT 1, MAP 1810, RECORDED NOVEMBER 21, 1924

DESCRIPTION	BY	APPROVED DATE	FILMED	CITY OF SAN DIEGO, CALIFORNIA	PTS-639782
ORIGINAL	KAPPA	S.O.	11/18/2021	SHEET 1 OF 1 SHEET	I.O.-24008303
				FOR CITY ENGINEER	1878-6243
				DATE	OCS 83 COORDINATES
					238-1683
					NAD 27 COORDINATES
					42405-1-B

COMPLETED

STATUS