

BASIS OF BEARINGS

THE BASIS OF BEARINGS FOR THIS DRAWING IS THE CALIFORNIA COORDINATE SYSTEM, CCS83, ZONE 6, AND IS DETERMINED BY G.P.S. MEASUREMENTS TAKEN ON MARCH 3, 2021 AND WERE ESTABLISHED FROM G.P.S. STATION 1022 AND G.P.S. STATION 2175 PER RECORD OF SURVEY NO. 11252. THE BEARING FROM G.P.S. STATION 1022 TO G.P.S. STATION 2175 IS N83°24'12"E. QUOTED BEARINGS FROM REFERENCE MAPS OR DEEDS MAY OR MAY NOT BE IN TERMS OF SAID SYSTEM.

THE COMBINED GRID FACTOR AT G.P.S. STATION 1022 IS 0.9999794. GRID DISTANCE = GROUND DISTANCE X COMBINED GRID FACTOR. ELEVATION AT G.P.S. STATION 1022 IS 647.89.

LEGEND

- EASEMENT FOR PUBLIC UTILITY RESERVED BY THE CITY OF SAN DIEGO PER DOC. NO. 1996-0272372, RECORDED MAY 30, 1996 OF OFFICIAL RECORDS, VACATED.
- ACCESS RIGHTS RELINQUISHED PER DOCUMENTS RECORDED JULY 11, 1963 AT FILE/PAGE NO. 121070 AND OCTOBER 16, 1964 AT FILE/PAGE NO. 189284, BOTH OF OFFICIAL RECORDS.
- RIGHT-OF-WAY
- PROPERTY LINE
- LOT LINE
- EASEMENT LINE
- CENTERLINE

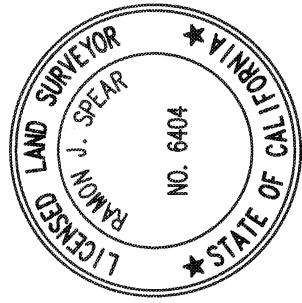
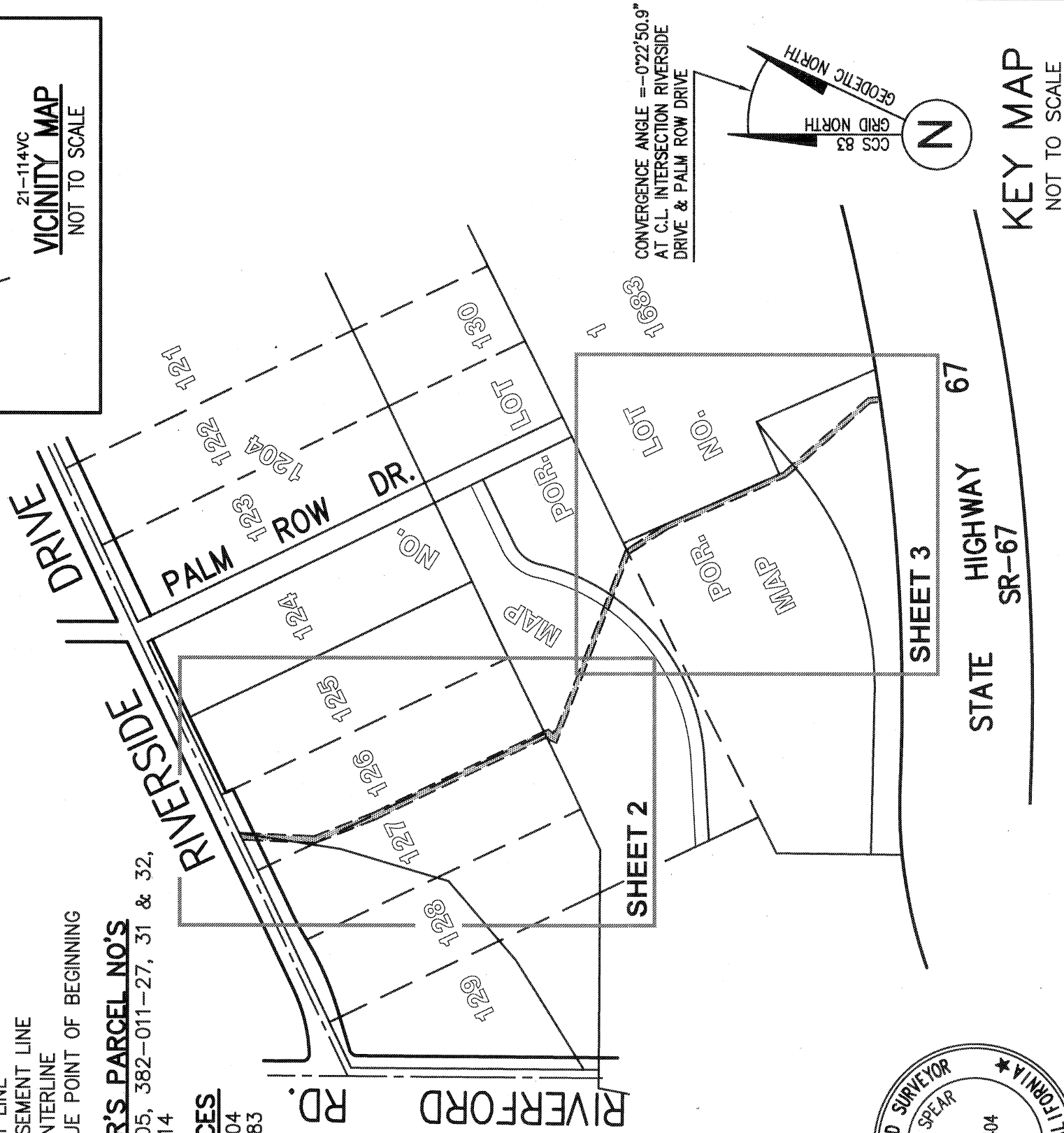
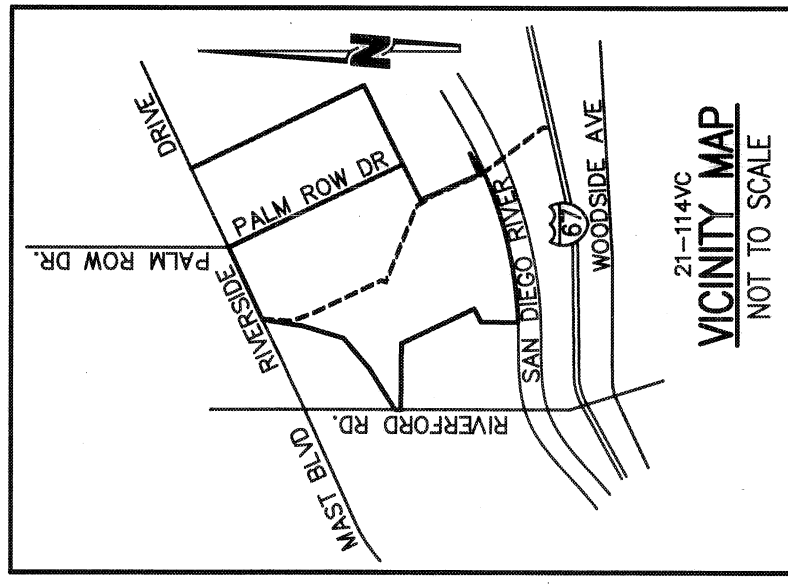
T.P.O.B. TRUE POINT OF BEGINNING

ASSESSOR'S PARCEL NO.'S

379-143-05, 382-011-27, 31 & 32,
382-260-14

REFERENCES

MAP NO. 1204
MAP NO. 1683
MS 707



SPEAR & ASSOCIATES, INC

CIVIL ENGINEERING AND LAND SURVEYING
475 PRODUCTION STREET, SAN MARCOS, CA. 92078
PHONE (760) 736-2040 FAX (760) 721-0114

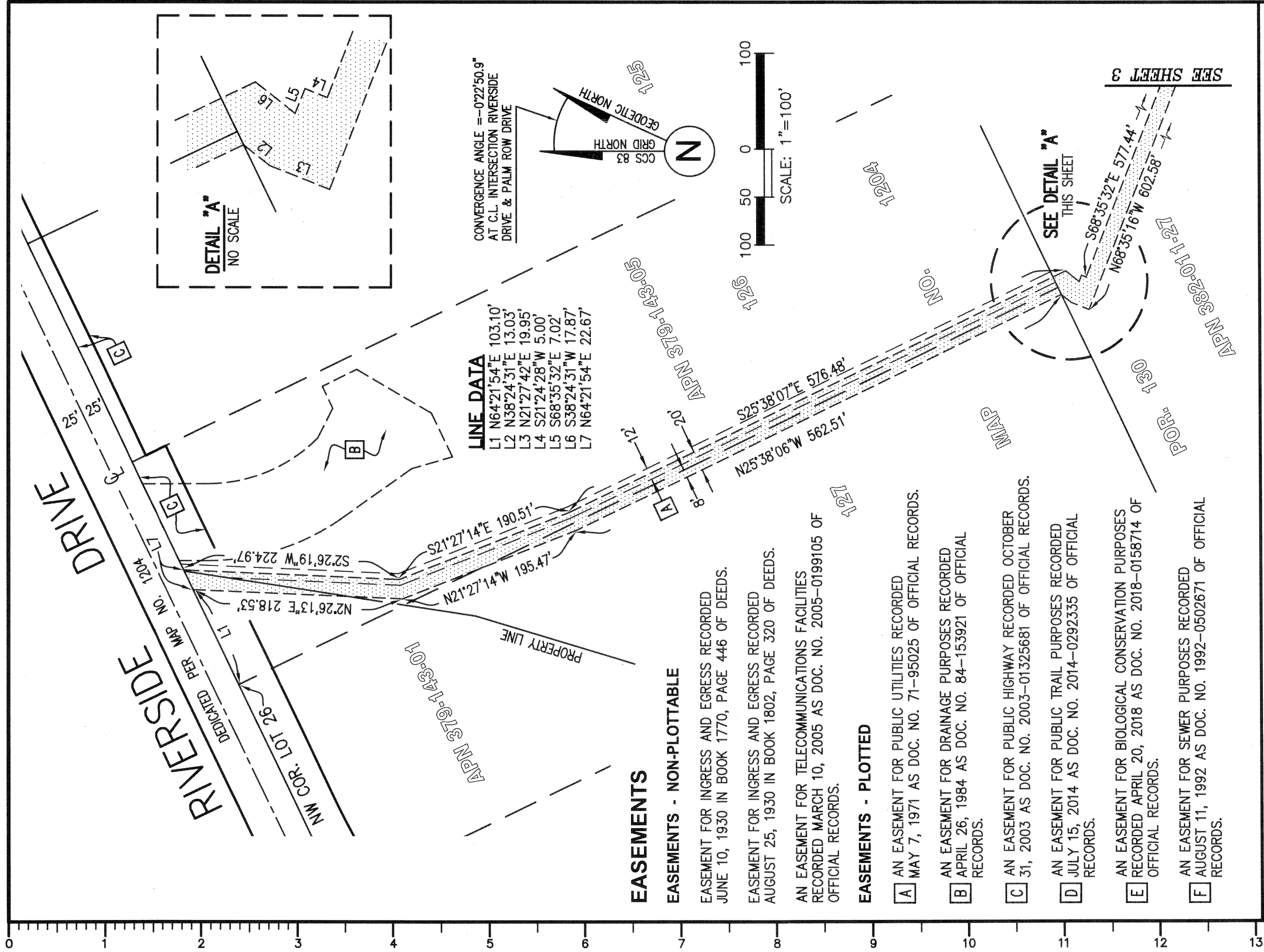
BY:  MARCH 15, 2022
RAMON J. SPEAR, L.S. 6404 DATE

DOCUMENT NO. ZOTZ-0194106
RECORDED MAR. 4. 2022
RESOLUTION NO. C.M.-7099
RECORDED MARCH 15. 2022

**PUBLIC UTILITY EASEMENT VACATION
IN LOTS 126, 127 & 130 OF MAP NO. 1204
AND LOT 1 OF MAP NO. 1683**

| DESCRIPTION | BY | APPROVED | DATE | FILED |
|-------------|----|----------|------|-------|
| ORIGINAL | | | | |
| | | | | |
| | | | | |
| | | | | |
| STATUS | | | | |

| | |
|---|---------------------|
| CITY OF SAN DIEGO, CALIFORNIA SHEET 1 OF 3 SHEET | PTS # 690804 |
| <i>Ramon J. Spear</i> FOR LAND SURVEYOR | I.D. NO. N/A |
| DATE | 1894-6347 |
| DIVISION HEAD | NAD83 COORDINATES |
| SECTION HEAD | 254-1787 |
| | LAMBERT COORDINATES |
| | 42426-1-B |



LINE DATA

| | | |
|----|-------------|---------|
| L1 | N64°21'54"E | 103.10' |
| L2 | N38°24'31"E | 13.03' |
| L3 | N21°27'42"E | 19.95' |
| L4 | S21°24'28"W | 5.00' |
| L5 | S68°35'32"E | 7.02' |
| L6 | S38°24'31"W | 17.87' |
| L7 | N64°21'54"E | 22.67' |

EASEMENTS

EASEMENTS - NON-PLOTTABLE

- EASEMENT FOR INGRESS AND EGRESS RECORDED JUNE 10, 1930 IN BOOK 1770, PAGE 446 OF DEEDS.
- EASEMENT FOR INGRESS AND EGRESS RECORDED AUGUST 25, 1930 IN BOOK 1802, PAGE 320 OF DEEDS.
- AN EASEMENT FOR TELECOMMUNICATIONS FACILITIES RECORDED MARCH 10, 2005 AS DOC. NO. 2005-0199105 OF OFFICIAL RECORDS.

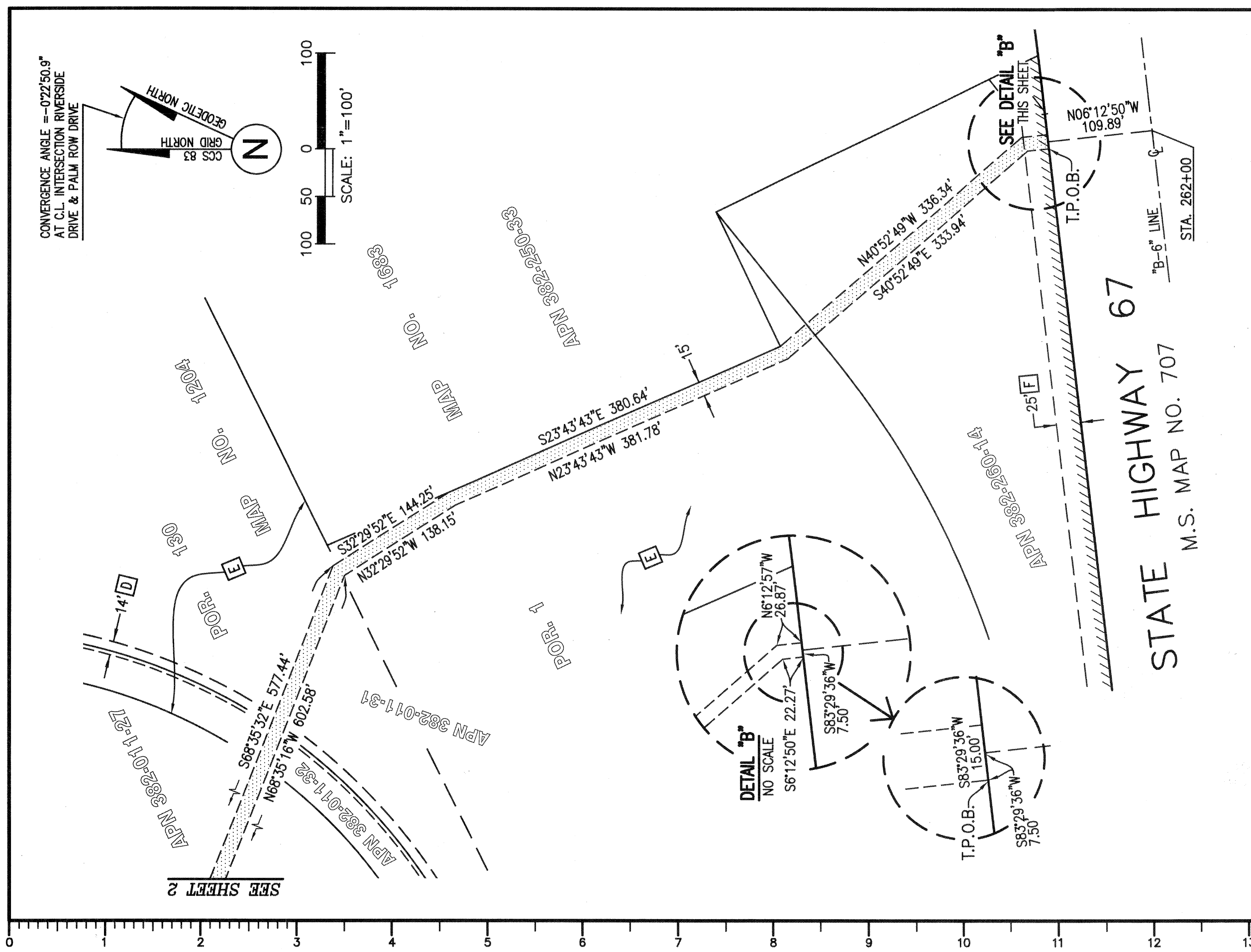
EASEMENTS - PLOTTED

- A** AN EASEMENT FOR PUBLIC UTILITIES RECORDED MAY 7, 1971 AS DOC. NO. 71-95025 OF OFFICIAL RECORDS.
- B** AN EASEMENT FOR DRAINAGE PURPOSES RECORDED APRIL 26, 1984 AS DOC. NO. 84-153921 OF OFFICIAL RECORDS.
- C** AN EASEMENT FOR PUBLIC HIGHWAY RECORDED OCTOBER 31, 2003 AS DOC. NO. 2003-01325681 OF OFFICIAL RECORDS.
- D** AN EASEMENT FOR PUBLIC TRAIL PURPOSES RECORDED JULY 15, 2014 AS DOC. NO. 2014-0292335 OF OFFICIAL RECORDS.
- E** AN EASEMENT FOR BIOLOGICAL CONSERVATION PURPOSES RECORDED APRIL 20, 2018 AS DOC. NO. 2018-0158714 OF OFFICIAL RECORDS.
- F** AN EASEMENT FOR SEWER PURPOSES RECORDED AUGUST 11, 1992 AS DOC. NO. 1992-0502671 OF OFFICIAL RECORDS.

**PUBLIC UTILITY EASEMENT VACATION
IN LOTS 126, 127 & 130 OF MAP NO. 1204
AND LOT 1 OF MAP NO. 1683**

| DESCRIPTION | BY | APPROVED | DATE | FILMED |
|-------------|----|----------|------|--------|
| ORIGINAL | | | | |
| | | | | |
| | | | | |
| | | | | |
| | | | | |
| | | | | |
| | | | | |
| | | | | |
| | | | | |
| | | | | |
| | | | | |
| | | | | |
| | | | | |
| | | | | |

| | | |
|---|--|---------------------|
| CITY OF SAN DIEGO, CALIFORNIA SHEET 2 OF 3 SHEET | | PTS # 690804 |
| APR. 17 FOR LAND SURVEYOR | | I.D. NO. N/A |
| DATE 1/28/2022 | | 1894-6347 |
| DIVISION HEAD | | NAD83 COORDINATES |
| SECTION HEAD | | 254-1787 |
| STATUS | | LAMBERT COORDINATES |
| | | 42426-2-B |



**PUBLIC UTILITY EASEMENT VACATION
IN LOTS 126, 127 & 130 OF MAP NO. 1204
AND LOT 1 OF MAP NO. 1683**

| DESCRIPTION | BY | APPROVED | DATE | FILMED | STATUS |
|-------------|----|----------|------|--------|--------|
| ORIGINAL | | | | | |
| | | | | | |
| | | | | | |
| | | | | | |
| | | | | | |

| | | |
|---|--|---------------------|
| CITY OF SAN DIEGO, CALIFORNIA SHEET 3 OF 3 SHEET | | PTS # 690804 |
| FOR LAND SURVEYOR <i>Valle A. Es</i> | | I.D. NO. N/A |
| DATE 4/28/2002 | | 1894-6347 |
| DIVISION HEAD | | NAD83 COORDINATES |
| SECTION HEAD | | 254-1787 |
| | | LAMBERT COORDINATES |
| | | 42426-3-B |