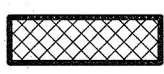



EXHIBIT B

LEGEND:

 PARCEL A, RECREATION EASEMENT FOR PUBLIC LINEAR PARK AREA  
0.187 ACRES (8,162 SQ.FT.)  
(SEE SHEET 2)

 PARCEL B, RECREATION EASEMENT FOR PUBLIC LINEAR PARK AREA  
0.966 ACRES (42,167 SQ.FT.)  
(SEE SHEET 3)

T.P.O.B. TRUE POINT OF BEGINNING

P.O.B. POINT OF BEGINNING

(R) INDICATES RADIAL BEARING

BASIS OF BEARINGS:

THE BEARINGS SHOWN HEREIN ARE BASED ON THE NORTHEASTERLY LINE OF PARCEL 1 OF PARCEL MAP NO. 21693 BEING N36°32'11"E.

REFERENCE DRAWING:

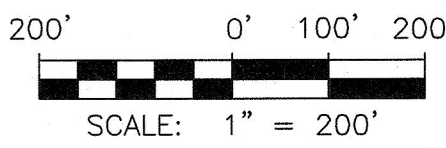
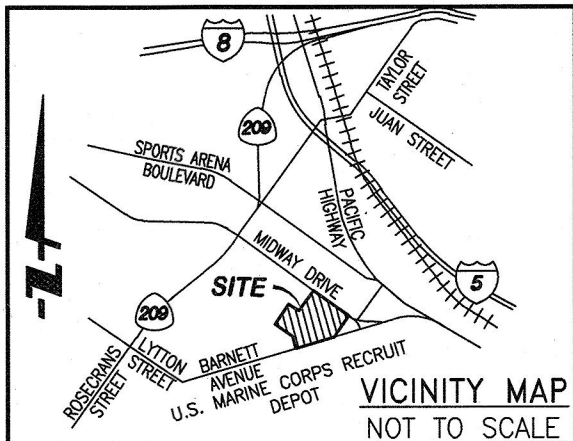
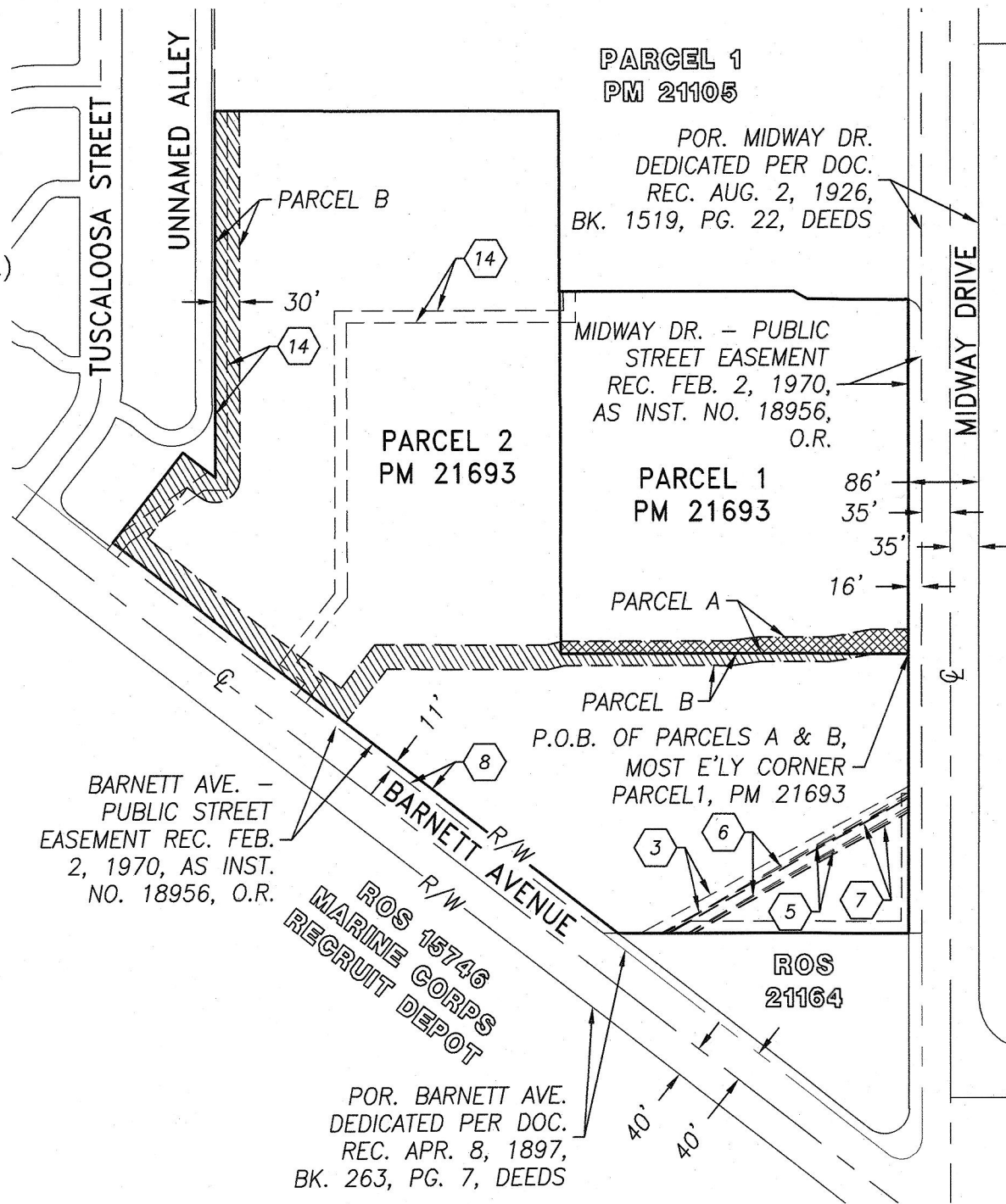
PM 21693  
41858-D  
42204-D

ASSESSOR'S PARCEL NO.:

450-480-13  
450-480-14  
450-480-15

EASEMENT LEGEND:

 EXISTING EASEMENT AS NOTED IN EASEMENT LEGEND ON SHEET 4.



**FUSCOE**  
ENGINEERING  
16795 Von Karman, Suite 100, Irvine, California 92606  
tel 949.474.1960 • fax 949.474.5315 • www.fuscoe.com

*J. Marty Smith*  
J. MARTY SMITH, LS 8070

08/05/2021  
DATE



DOCUMENT NO.: 2021-0587397 & 2021-0587384

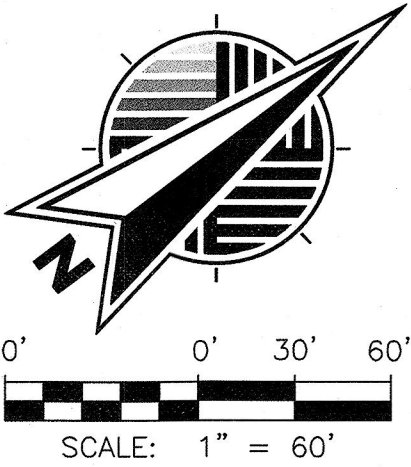
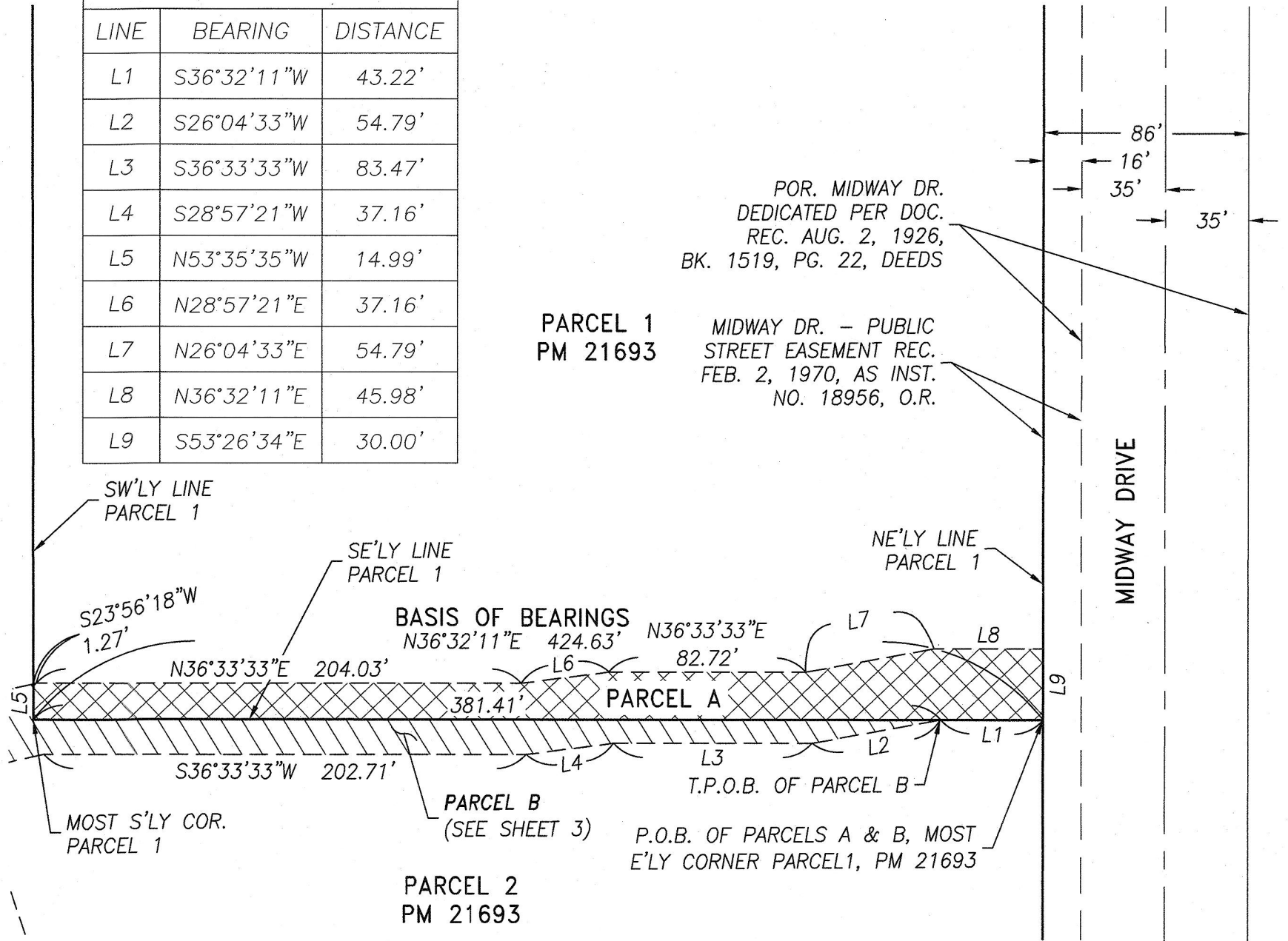
RECORDED: AUGUST 18, 2021

RECREATION EASEMENT FOR PUBLIC LINEAR PARK  
OVER PORTIONS OF PARCEL 1 AND PARCEL 2, PARCEL MAP NO. 21693

DESCRIPTION	BY	APPROVED	DATE	FILMED	CITY OF SAN DIEGO, CALIFORNIA SHEET 1 OF 4	P.T.S. NO. 692382
ORIGINAL	FEI					
					<i>J. Marty Smith</i> FOR CITY ENGINEER	1850-6267 NAD 83 COORDINATES
					DATE	210-1707 LAMBERT COORDINATES
					DIVISION HEAD	
					SECTION HEAD	42429-1-B

EXHIBIT B

LINE TABLE		
LINE	BEARING	DISTANCE
L1	S36°32'11"W	43.22'
L2	S26°04'33"W	54.79'
L3	S36°33'33"W	83.47'
L4	S28°57'21"W	37.16'
L5	N53°35'35"W	14.99'
L6	N28°57'21"E	37.16'
L7	N26°04'33"E	54.79'
L8	N36°32'11"E	45.98'
L9	S53°26'34"E	30.00'



**FUSCOE**  
ENGINEERING  
16795 Von Karman, Suite 100, Irvine, California 92606  
tel 949.474.1960 • fax 949.474.5315 • www.fuscoe.com

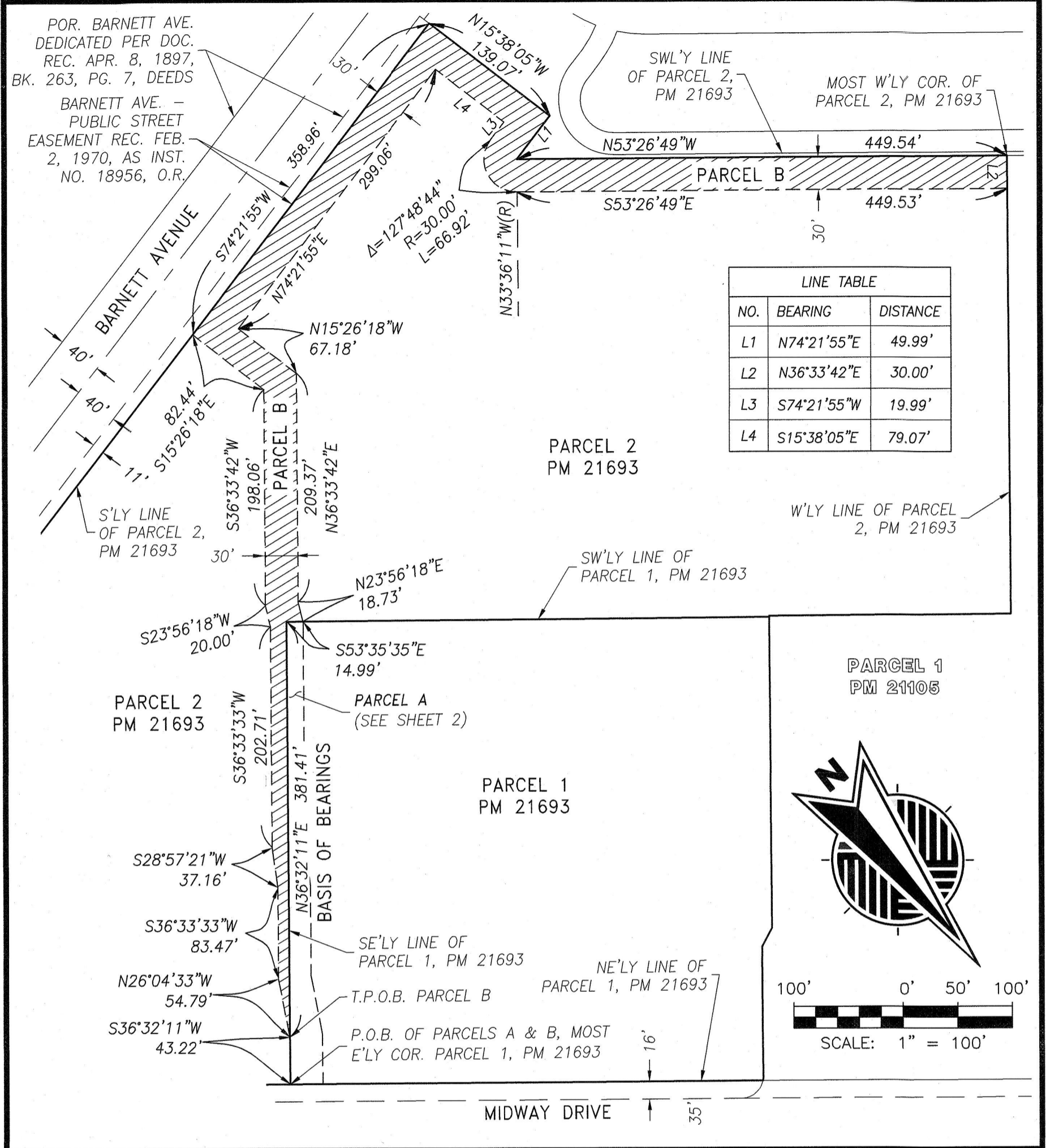
DOCUMENT NO.: 2021-0587397 \*  
2021-058738A

RECORDED: AUGUST 18, 2021

RECREATION EASEMENT FOR PUBLIC LINEAR PARK  
OVER PORTIONS OF PARCEL 1 AND PARCEL 2, PARCEL MAP NO. 21693

DESCRIPTION	BY	APPROVED	DATE	FILMED	CITY OF SAN DIEGO, CALIFORNIA SHEET 2 OF 4	P.T.S. NO. 692382
ORIGINAL	FEI				<i>T. R. F. D.</i> FOR CITY ENGINEER	1850-6267 NAD 83 COORDINATES
					<i>8/13/2021</i> DATE	210-1707 LAMBERT COORDINATES
					DIVISION HEAD	
					SECTION HEAD	42429-2-B
STATUS						

EXHIBIT B



**FUSCOE**  
 ENGINEERING  
 16795 Von Karman, Suite 100, Irvine, California 92606  
 tel 949.474.1960 • fax 949.474.5315 • www.fuscoe.com

2021-0587397 \*  
 DOCUMENT NO.: 2021-0587384  
 RECORDED: August 18, 2021

RECREATION EASEMENT FOR PUBLIC LINEAR PARK  
 OVER PORTIONS OF PARCEL 1 AND PARCEL 2, PARCEL MAP NO. 21693

DESCRIPTION	BY	APPROVED	DATE	FILMED	CITY OF SAN DIEGO, CALIFORNIA SHEET 3 OF 4	P.T.S. NO. 692382
ORIGINAL	FEI					
					<i>Paul R. FV</i> FOR CITY ENGINEER	1850-6267 NAD 83 COORDINATES
					8/17/2021 DATE	210-1707 LAMBERT COORDINATES
					DIVISION HEAD	
					SECTION HEAD	42429-3-B
STATUS						

**EXHIBIT B**

**EASEMENT LEGEND:**

- ③ AN EASEMENT IN FAVOR OF THE CITY OF SAN DIEGO, A MUNICIPAL CORPORATION FOR SEWER, RIGHT OF WAY AND INCIDENTAL PURPOSES, RECORDED OCTOBER 24, 1929, IN BOOK 1690 OF DEEDS, PAGE 351.
- ⑤ AN EASEMENT IN FAVOR OF FRONTIER ENTERPRISES, INC., A DELAWARE CORPORATION FOR STORM SEWER AND INCIDENTAL PURPOSES, RECORDED OCTOBER 09, 1941, AS BOOK 1261, PAGE 16 OF OFFICIAL RECORDS.
- ⑥ AN EASEMENT IN FAVOR OF FRONTIER ENTERPRISES, INC., A DELAWARE CORPORATION FOR STORM DRAIN AND INCIDENTAL PURPOSES, RECORDED DECEMBER 15, 1941, AS BOOK 1291, PAGE 52 OF OFFICIAL RECORDS.
- ⑦ AN EASEMENT IN FAVOR OF THE CITY OF SAN DIEGO FOR STORM DRAIN OR DRAINS AND INCIDENTAL PURPOSES, RECORDED SEPTEMBER 29, 1969, AS INSTRUMENT NO. 178008 OF OFFICIAL RECORDS.
- ⑧ AN EASEMENT IN FAVOR OF THE CITY OF SAN DIEGO, A MUNICIPAL CORPORATION FOR PUBLIC STREET AND INCIDENTAL PURPOSES, RECORDED FEBRUARY 02, 1970, AS INSTRUMENT NO. 18956 OF OFFICIAL RECORDS.
- ⑭ AN EASEMENT AGREEMENT BETWEEN UNITED STATES POSTAL SERVICE, AN INDEPENDENT ESTABLISHMENT OF THE EXECUTIVE BRANCH OF THE GOVERNMENT OF THE UNITED STATES, AND REXFORD INDUSTRIAL REALTY, L.P. A MARYLAND LIMITED PARTNERSHIP FOR PRIVATE STORM DRAIN AND INCIDENTAL PURPOSES, RECORDED NOVEMBER 13, 2015, AS INSTRUMENT NO. 2015-0590032 OF OFFICIAL RECORDS. MODIFIED BY THE TERMS AND PROVISIONS OF THE DOCUMENT RECORDED DECEMBER 18, 2019, AS INSTRUMENT NO. 2019-0592488 OF OFFICIAL RECORDS.
- THE TERMS AND PROVISIONS CONTAINED IN THE DOCUMENT ENTITLED "SHARED ACCESS EASEMENT AGREEMENT" RECORDED NOVEMBER 13, 2015, AS INSTRUMENT NO. 2015-0590032 OF OFFICIAL RECORDS. THE EASEMENT IS OFFSITE BUT THE TERMS AND PROVISIONS ARE BLANKET IN NATURE.
- AN EASEMENT FOR VARIOUS HIGH VOLTAGE ELECTRICAL CABLES, TRANSFORMERS, SWITCHES AND OTHER MISCELLANEOUS EQUIPMENT, PUBLIC UTILITIES, INGRESS, EGRESS AND INCIDENTAL PURPOSES, GRANTED TO SAN DIEGO GAS AND ELECTRIC COMPANY RECORDED FEBRUARY 16, 1970, AS INSTRUMENT NO. 27845 OF OFFICIAL RECORDS. SAID EASEMENT HAS NO SPECIFIC LOCATION SET FORTH IN THE DEED AND CANNOT BE PLOTTED ON THE DRAWING.
- AN EASEMENT FOR VARIOUS HIGH VOLTAGE ELECTRICAL CABLES, TRANSFORMERS, SWITCHES AND OTHER MISCELLANEOUS EQUIPMENT, PUBLIC UTILITIES, INGRESS, EGRESS AND INCIDENTAL PURPOSES, GRANTED TO SAN DIEGO GAS AND ELECTRIC COMPANY RECORDED OCTOBER 02, 1972, AS INSTRUMENT NO. 264014 OF OFFICIAL RECORDS. SAID EASEMENT HAS NO SPECIFIC LOCATION SET FORTH IN THE DEED AND CANNOT BE PLOTTED ON THE DRAWING.
- THE FACT THAT THE LAND LIES WITHIN THE BOUNDARIES OF THE NORTH BAY REDEVELOPMENT PROJECT AREA, AS DISCLOSED BY THE DOCUMENT RECORDED JUNE 03, 1998 AS INSTRUMENT NO. 1998-0330956 OF OFFICIAL RECORDS. SAID EASEMENT HAS NO SPECIFIC LOCATION SET FORTH IN THE DEED AND CANNOT BE PLOTTED ON THE DRAWING.
- THE TERMS AND PROVISIONS CONTAINED IN THE DOCUMENT ENTITLED "DECLARATION OF RESTRICTION" RECORDED APRIL 6, 2020, AS INSTRUMENT NO. 2020-0174957 OF OFFICIAL RECORDS. SAID DOCUMENT IS BLANKET IN NATURE OVER THE SUBJECT PROPERTY.
- THE TERMS AND PROVISIONS CONTAINED IN THE DOCUMENT ENTITLED "ENCROACHMENT MAINTENANCE AND REMOVAL AGREEMENT" RECORDED MAY 3, 2021, AS INSTRUMENT NO. 2021-0339744 OF OFFICIAL RECORDS. SAID ENCROACHMENT HAS NO SPECIFIC LOCATION SET FORTH IN THE DOCUMENT AND CANNOT BE PLOTTED ON THE DRAWING.
- THE TERMS AND PROVISIONS CONTAINED IN THE DOCUMENT ENTITLED "STORM WATER MANAGEMENT AND DISCHARGE CONTROL MAINTENANCE AGREEMENT" RECORDED MAY 3, 2021, AS INSTRUMENT NO. 2021-0339793 OF OFFICIAL RECORDS. SAID DOCUMENT IS BLANKET IN NATURE OVER THE SUBJECT PROPERTY.



**FUSCOE**  
ENGINEERING  
16795 Von Karman, Suite 100, Irvine, California 92606  
tel 949.474.1960 • fax 949.474.5315 • www.fuscoe.com

DOCUMENT NO.: \_\_\_\_\_

RECORDED: \_\_\_\_\_

**RECREATION EASEMENT FOR PUBLIC LINEAR PARK  
OVER PORTIONS OF PARCEL 1 AND PARCEL 2, PARCEL MAP NO. 21693**

DESCRIPTION	BY	APPROVED	DATE	FILMED	CITY OF SAN DIEGO, CALIFORNIA SHEET 4 OF 4	P.T.S. NO. 692382
ORIGINAL	FEI					
					<i>J. R. Boyd</i>	1850-6267
					FOR CITY ENGINEER	NAD 83 COORDINATES
						210-1707
					DIVISION HEAD	LAMBERT COORDINATES
						42429-4-B
					SECTION HEAD	
					STATUS	