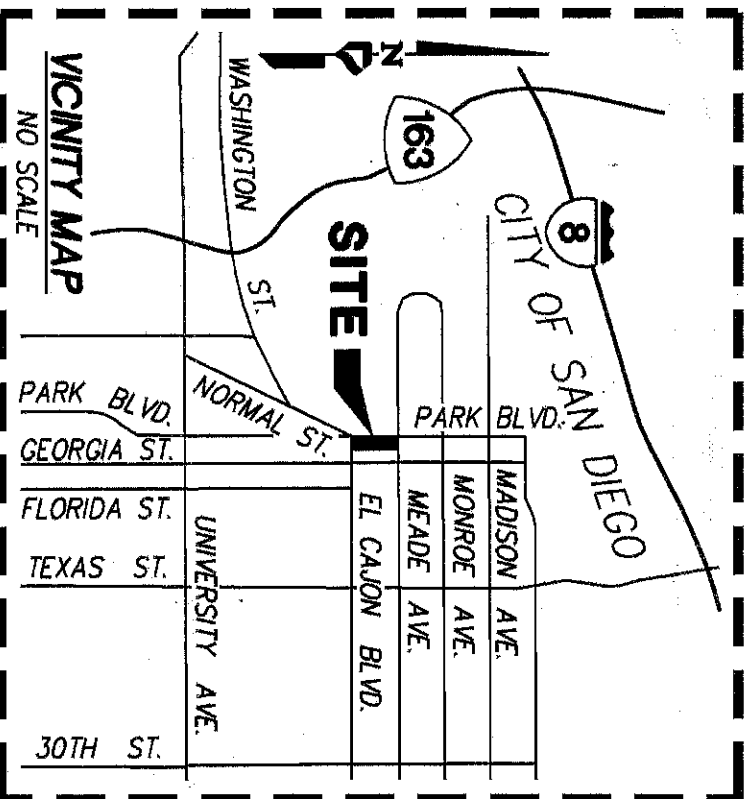


# EXHIBIT "B"



## LEGEND

- INDICATES WATER EASEMENT ACQUIRED  
AREA = 65.38 SQ. FT. (0.002 AC.) MORE OR LESS
- INDICATES FOUND LEAD & DISC STAMPED "L.S. 7019" AT 7' OFFSET IN CONCRETE WALK PER ROS 23088.
- INDICATES FOUND LEAD & DISC STAMPED "LS 5653" NO RECORD. ACCEPTED AS REPLACEMENT FOR LEAD & DISC STAMPED "CITY ENGR" SET PER CR 1789 AND HELD AS 7'X7' OFFSET TO BLOCK CORNER.
- INDICATES FOUND LEAD & DISC STAMPED "SD CITY SURVEYOR" PER CR 37107. HELD AS 7'X7' OFFSET TO BLOCK CORNER.
- INDICATES RECORD DATA PER ROS 23088
- INDICATES RECORD DATA PER DOCUMENT NO. 2019-0484839, RECORDED OCTOBER 25, 2019, O.R.
- INDICATES POINT OF COMMENCEMENT
- INDICATES TRUE POINT OF BEGINNING
- INDICATES EXISTING RIGHT OF WAY
- INDICATES EXISTING CENTERLINE
- INDICATES LOT LINE

## LEGAL DESCRIPTION

LOT A IN BLOCK 1 OF ROBERTS SUBDIVISION, IN THE CITY OF SAN DIEGO, COUNTY OF SAN DIEGO, STATE OF CALIFORNIA, ACCORDING TO MAP THEREOF NO. 890, FILED IN THE OFFICE OF THE COUNTY RECORDER OF SAN DIEGO COUNTY, DECEMBER 31, 1902.

## ASSESSOR'S PARCEL NO.

- 445-310-04

## REFERENCE DRAWINGS

- MAP NO. 890                      • MAP NO. 558
- MAP NO. 15345                • ROS NO. 23088
- DWG. NO. 41427-B          • DWG. NO. 41597-D
- DWG. NO. 41711-B          • DWG. NO. 41712-D

## BASIS OF BEARINGS

THE BASIS OF BEARINGS FOR THIS SURVEY IS THE CALIFORNIA COORDINATE SYSTEM OF 1983, ZONE 6, EPOCH 1991.35 GRID BEARING BETWEEN FIRST ORDER POINTS "174" AND "165" AS SHOWN HEREON PER ROS 14492.

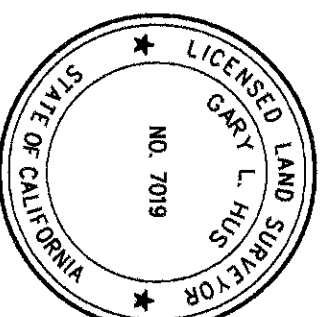
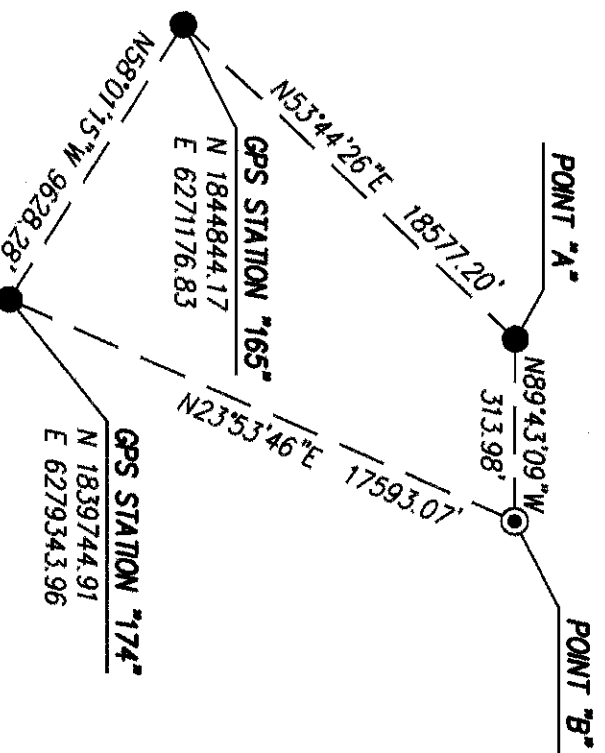
I.E., NORTH 58°01'15" WEST

DISTANCES SHOWN HEREON ARE GROUND DISTANCES. TO OBTAIN GRID LEVEL DISTANCES, MULTIPLY DISTANCES BY 1.0000177. QUOTED BEARINGS FROM REFERENCE DEEDS/MAPS MAY OR MAY NOT BE IN TERMS OF SAID SYSTEM.

ELEVATION AT G.P.S. STATION 174 IS 917 N.G.V.D. 29. SEE DETAIL AT RIGHT

## BASIS OF BEARINGS DETAIL

NO SCALE (SEE ROS 23088)



*Gary L. Hus*  
GARY L. HUS, L.S. 7019                      03-15-2022  
DATE



## PROJECT DESIGN CONSULTANTS

701 B Street, Suite 800      San Diego, CA 92101  
619.235.6471 Tel              619.234.0349 Fax

# WATER EASEMENT DEDICATION

IN PORTION OF LOT A IN BLOCK 1 OF  
ROBERTS SUBDIVISION MAP NO. 890

DESCRIPTION	BY	APPRVD.	DATE	FILMED	CITY OF SAN DIEGO, CALIFORNIA	P.T.S. NO.
ORIGINAL	PDC				SHEET 1 OF 2 SHEETS	691418
					FOR CITY SURVEYOR	N/A
					<i>G.L.R. R. R.</i>	1854-6283
					DATE	CCS83 COORDINATES
						214-1723
						LAMBERT COORDINATES
						42436-B

COMPLETED

STATUS

DOCUMENT NO.: 2622-0242591

RECORDED: Jun 09, 2022

P.T.S. NO. 691418

I.O. NO. N/A

1854-6283

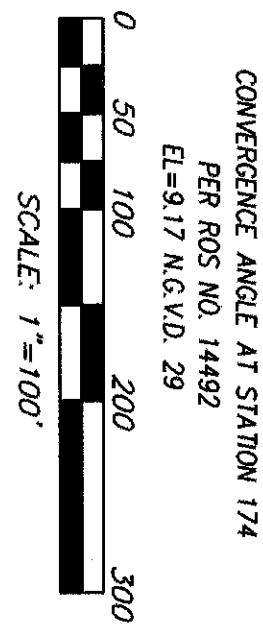
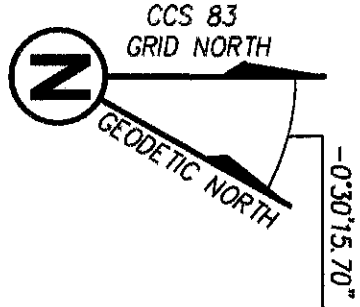
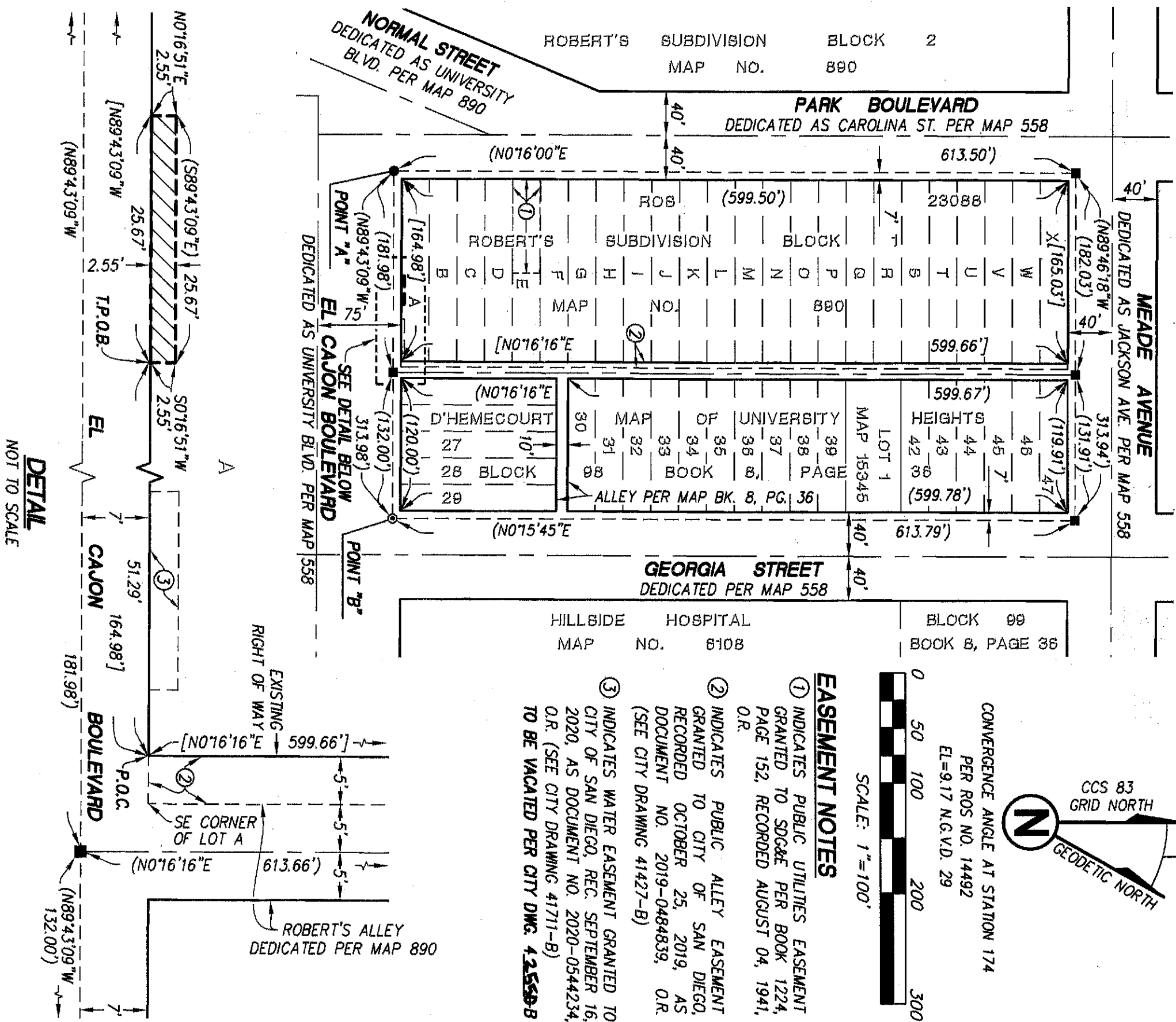
CCS83 COORDINATES

214-1723

LAMBERT COORDINATES

42436-B

# EXHIBIT "B"



- ### EASEMENT NOTES
- ① INDICATES PUBLIC UTILITIES EASEMENT GRANTED TO SDG&E PER BOOK 1224, PAGE 152, RECORDED AUGUST 04, 1941, O.R.
  - ② INDICATES PUBLIC ALLEY EASEMENT GRANTED TO CITY OF SAN DIEGO, RECORDED OCTOBER 25, 2019, AS DOCUMENT NO. 2019-0484839, O.R. (SEE CITY DRAWING 41427-B)
  - ③ INDICATES WATER EASEMENT GRANTED TO CITY OF SAN DIEGO, REC. SEPTEMBER 16, 2020, AS DOCUMENT NO. 2020-0544234, O.R. (SEE CITY DRAWING 41711-B) **TO BE VACATED PER CITY DWG. 42559-B**

**PROJECT DESIGN CONSULTANTS**  
 701 B Street, Suite 800 San Diego, CA 92101  
 619.235.6471 Tel 619.234.0349 Fax

## WATER EASEMENT DEDICATION IN PORTION OF LOT A IN BLOCK 1 OF ROBERTS SUBDIVISION MAP NO. 890

DESCRIPTION	BY	APPRVD.	DATE	FILMED
ORIGINAL	PDC			

CITY OF SAN DIEGO, CALIFORNIA	
SHEET 2 OF 2 SHEETS	
FOR CITY SURVEYOR	

P.T.S. NO. 691418	
I.O. NO. N/A	
1854-6283	
CCS83 COORDINATES	
214-1723	
LAMBERT COORDINATES	

**COMPLETED**

STATUS

42436-B