

# EXHIBIT "B"

## LEGEND

- INDICATES PEDESTRIAN ACCESS EASEMENT ACQUIRED.
- PARCEL 'A' CONTAINS 211± S.F.  
PARCEL 'B' CONTAINS 96± S.F.
- (R) INDICATES RADIAL BEARING
- ( ) INDICATES RECORD DATA PER MAP 15983
- POB INDICATES POINT OF BEGINNING
- TPOB INDICATES TRUE POINT OF BEGINNING

## REFERENCE DRAWINGS

MAP 15983  
CITY DWG NO. 41892-D

## ASSESSOR PARCEL NUMBERS

341-034-10 & 16

## BASIS OF BEARINGS

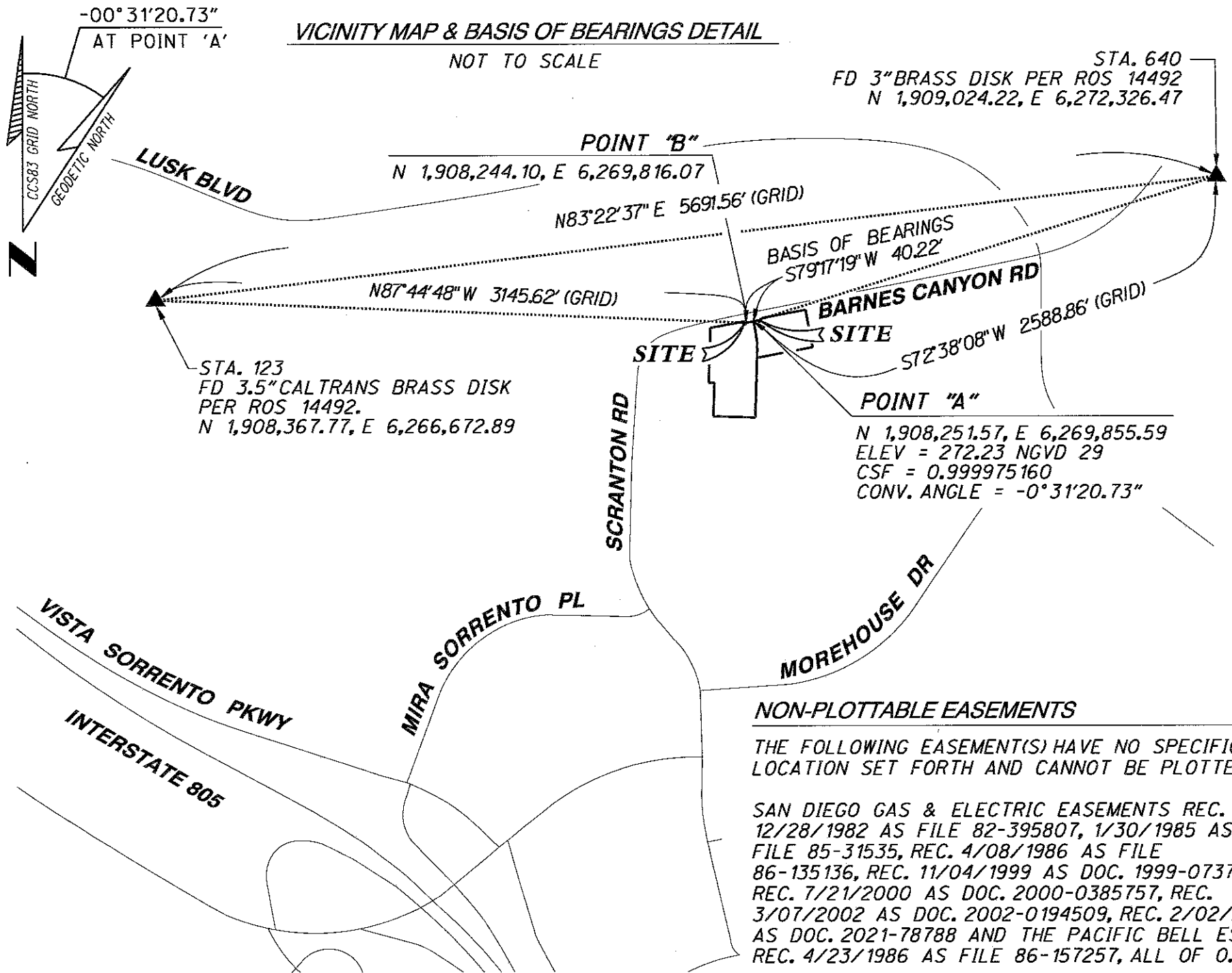
THE BASIS OF BEARINGS FOR THIS SURVEY IS THE CALIFORNIA COORDINATE SYSTEM, CCS83, ZONE 6, EPOCH 1991.35. TRAVERSE MEASUREMENTS TO POINTS 'A' AND 'B' ARE SHOWN HEREON. THE CCS83 COORDINATES OF POINTS 'A' AND 'B' ARE ESTABLISHED FROM G.P.S. STATION 123 AND G.P.S. STATION 640 PER RECORD OF SURVEY NO. 14492. THE BEARING FROM POINT 'A' TO POINT 'B' IS S 79°17'19"W.

THE COMBINED GRID FACTOR AT POINT 'A' IS 0.999975160.

ELEVATION AT POINT 'A' IS 272.23 (NGVD 29)

## VICINITY MAP & BASIS OF BEARINGS DETAIL

NOT TO SCALE



### NON-PLOTTABLE EASEMENTS

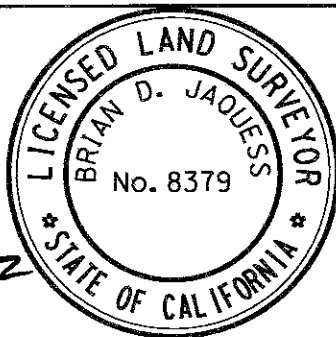
THE FOLLOWING EASEMENT(S) HAVE NO SPECIFIC LOCATION SET FORTH AND CANNOT BE PLOTTED:  
 SAN DIEGO GAS & ELECTRIC EASEMENTS REC. 12/28/1982 AS FILE 82-395807, 1/30/1985 AS FILE 85-31535, REC. 4/08/1986 AS FILE 86-135136, REC. 11/04/1999 AS DOC. 1999-0737542, REC. 7/21/2000 AS DOC. 2000-0385757, REC. 3/07/2002 AS DOC. 2002-0194509, REC. 2/02/2021 AS DOC. 2021-78788 AND THE PACIFIC BELL ESMT. REC. 4/23/1986 AS FILE 86-157257, ALL OF O.R.



5620 FRIARS ROAD  
SAN DIEGO, CA 92110  
619-291-0707  
(FAX) 619-291-4165

J. 19045

*Brian D. Jaquess* 2/22/22  
BRIAN D. JAQUESS, LS 8379 DATE



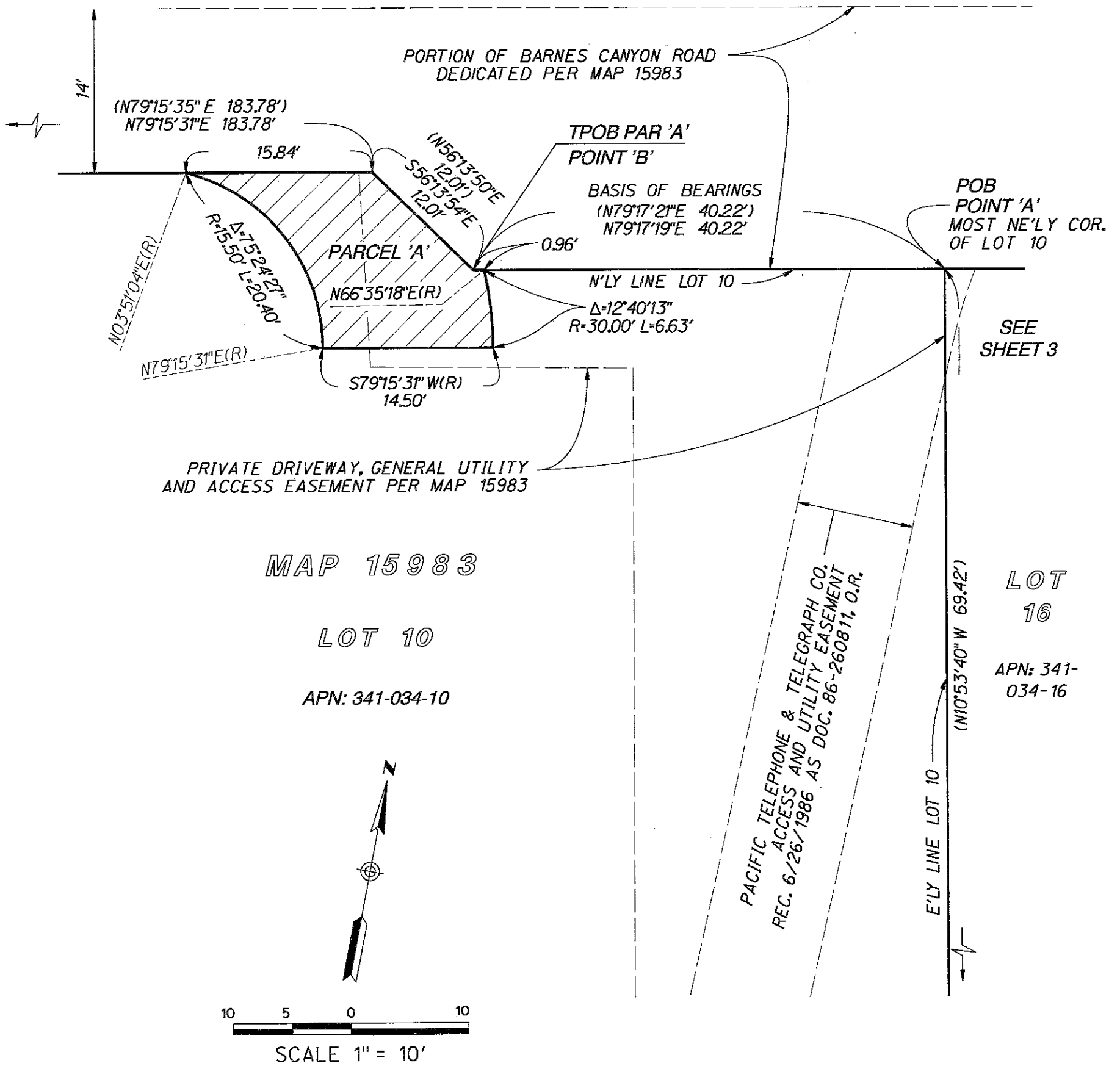
DOCUMENT No. 2022-0155413  
RECORDED APRIL 8, 2022

## PEDESTRIAN ACCESS EASEMENT PORTIONS OF LOTS 10 & 16 OF MAP 15983

DESCRIPTION	BY	APPROVED	DATE	FILMED	CITY OF SAN DIEGO, CALIFORNIA	PTS
ORIGINAL	REC				SHEET 1 OF 3 SHEET	694060
					<i>Brian D. Jaquess</i> FOR CITY ENGINEER	1906 - 6268
					DATE	CCS 83 COORDINATES
						266 - 1707
						NAD 27 COORDINATES
				STATUS		<b>42493-1-B</b>

# EXHIBIT "B"

## BARNES CANYON RD (DEDICATED PER MAP 10361)



5620 FRIARS ROAD  
SAN DIEGO, CA 92110  
619-291-0707  
(FAX) 619-291-4165

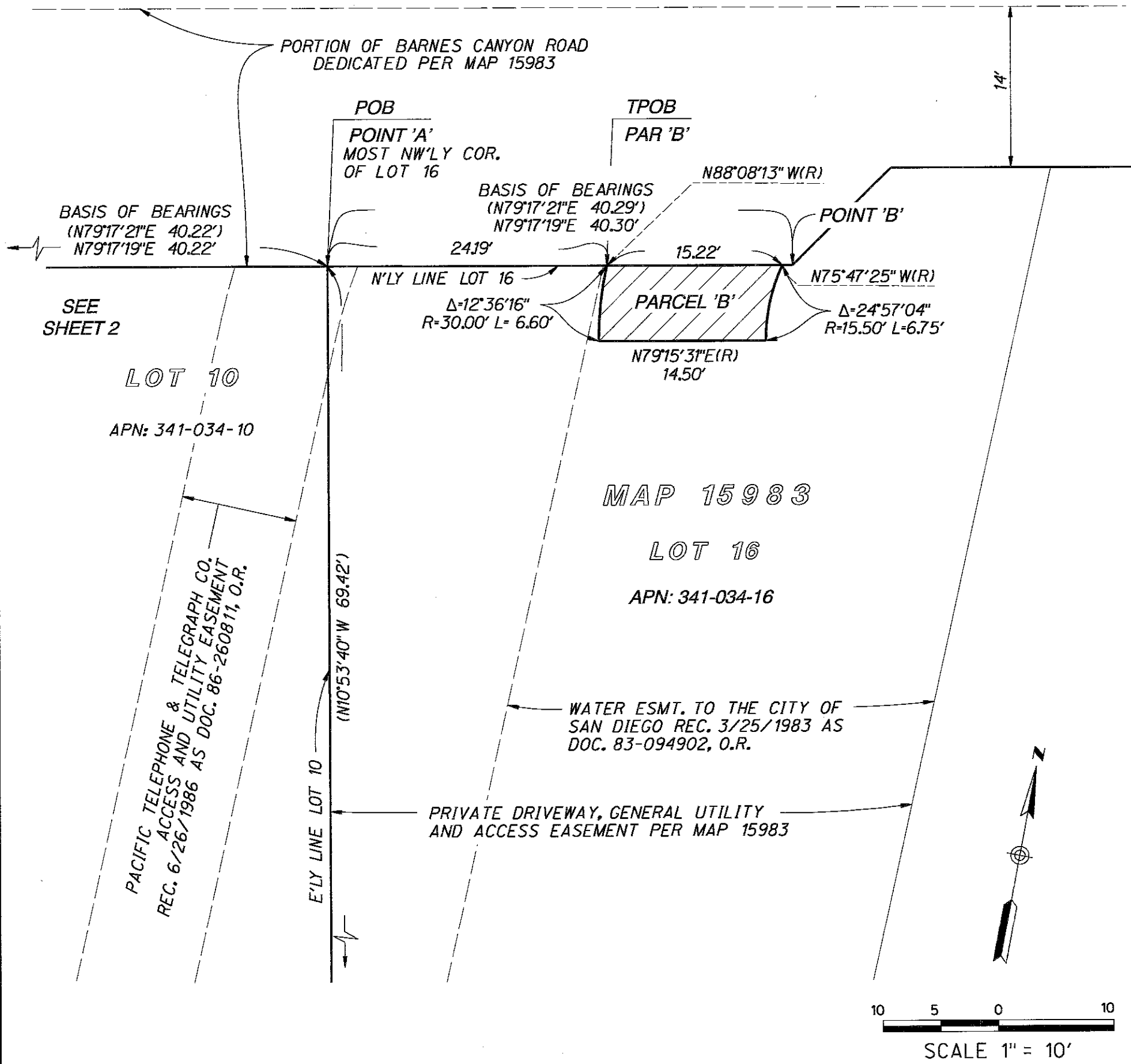
J. 19045

### PEDESTRIAN ACCESS EASEMENT PORTIONS OF LOTS 10 & 16 OF MAP 15983

DESCRIPTION	BY	APPROVED	DATE	FILMED	CITY OF SAN DIEGO, CALIFORNIA	PTS 694060
ORIGINAL	REC				SHEET 2 OF 3 SHEET	
					<i>Frank R. Kelly</i> FOR CITY ENGINEER	1906 - 6268 CCS 83 COORDINATES
					9/6/2022 DATE	266 - 1707 NAD 27 COORDINATES
						42493- 2 - B
STATUS						

# EXHIBIT "B"

## BARNES CANYON RD (DEDICATED PER MAP 10361)



5620 FRIARS ROAD  
SAN DIEGO, CA 92110  
619-291-0707  
(FAX) 619-291-4165

J. 19045

### PEDESTRIAN ACCESS EASEMENT PORTIONS OF LOTS 10 & 16 OF MAP 15983

DESCRIPTION	BY	APPROVED	DATE	FILMED	CITY OF SAN DIEGO, CALIFORNIA		PTS
ORIGINAL	REC				SHEET 3 OF 3 SHEET		694060
					<i>Frank R. King</i>	<i>4/6/2022</i>	1906 - 6268
					FOR CITY ENGINEER	DATE	CCS 83 COORDINATES
							266 - 1707
							NAD 27 COORDINATES
							<b>42493-3-B</b>
STATUS							